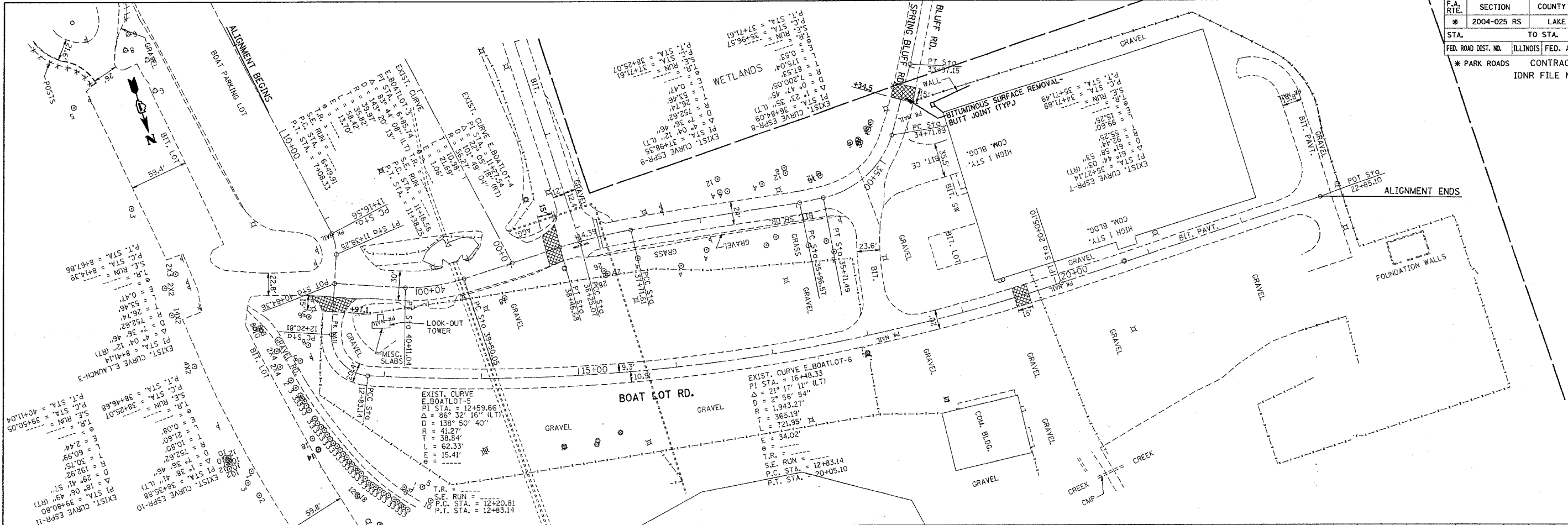


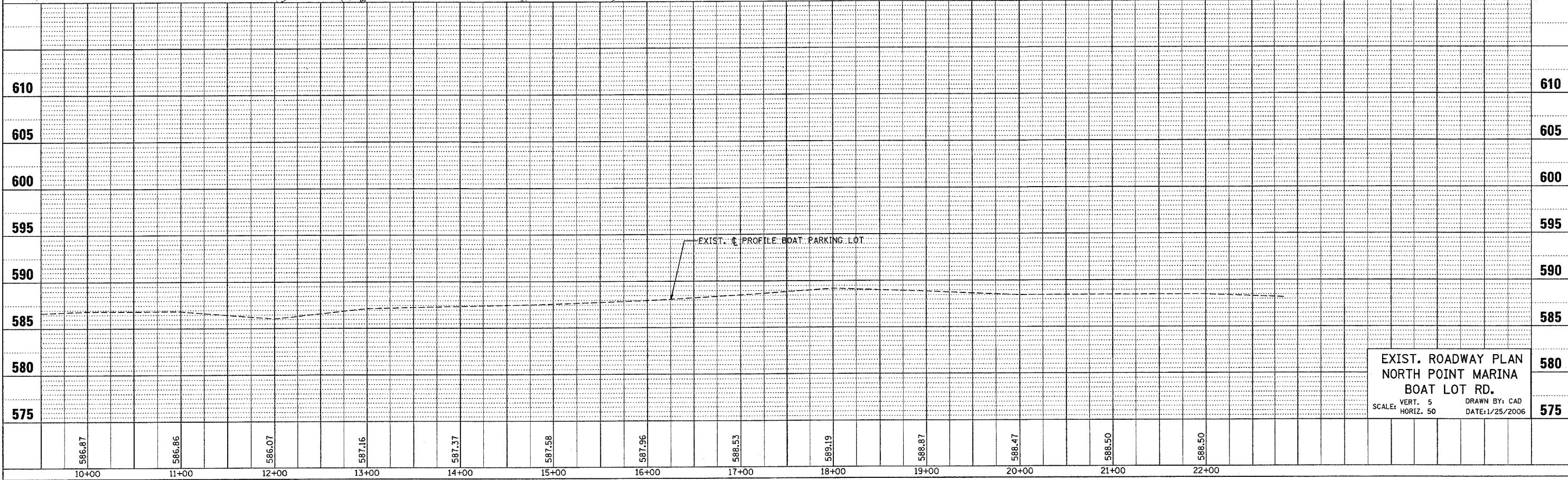
*REF-topblot
*REF-pfblot

| F.A. RTE. | SECTION | COUNTY | TOTAL SHEETS | SHEET NO. |
|---------------------|-------------|-------------------------|--------------|-----------|
| * | 2004-025 RS | LAKE | 116 | 33 |
| STA. TO STA. | | FED. AID PROJECT | | |
| FED. ROAD DIST. NO. | | ILLINOIS | | |
| * PARK ROADS | | CONTRACT NO. 62745 | | |
| | | IDNR FILE NO. 2-03-025A | | |

| PLAN | DATE | BY |
|---------------|------|----|
| SURVEYED | | |
| DESIGNED | | |
| CHECKED | | |
| IN CHARGE | | |
| NOTE BOOK NO. | | |
| FILE NAME | | |



| PROFILE | DATE | BY |
|---------------|------|----|
| SURVEYED | | |
| DESIGNED | | |
| CHECKED | | |
| IN CHARGE | | |
| NOTE BOOK NO. | | |
| FILE NAME | | |



EXIST. ROADWAY PLAN
NORTH POINT MARINA
BOAT LOT RD.
SCALE: VERT. 5
HORIZ. 50
DRAWN BY: CAD
DATE: 1/25/2006