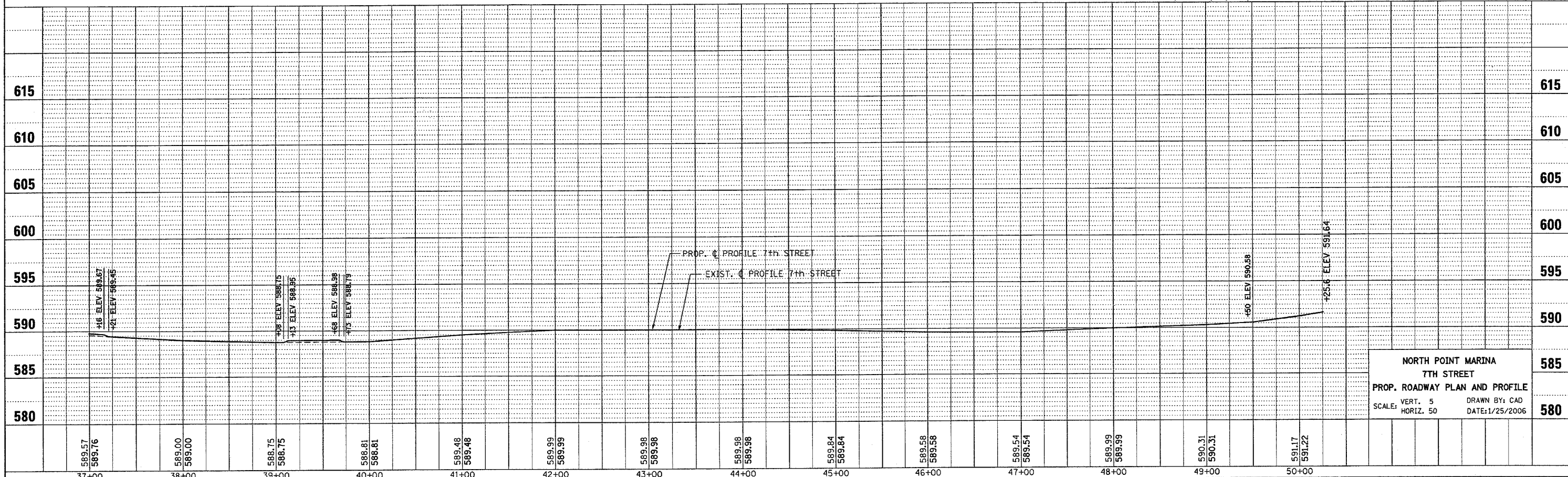
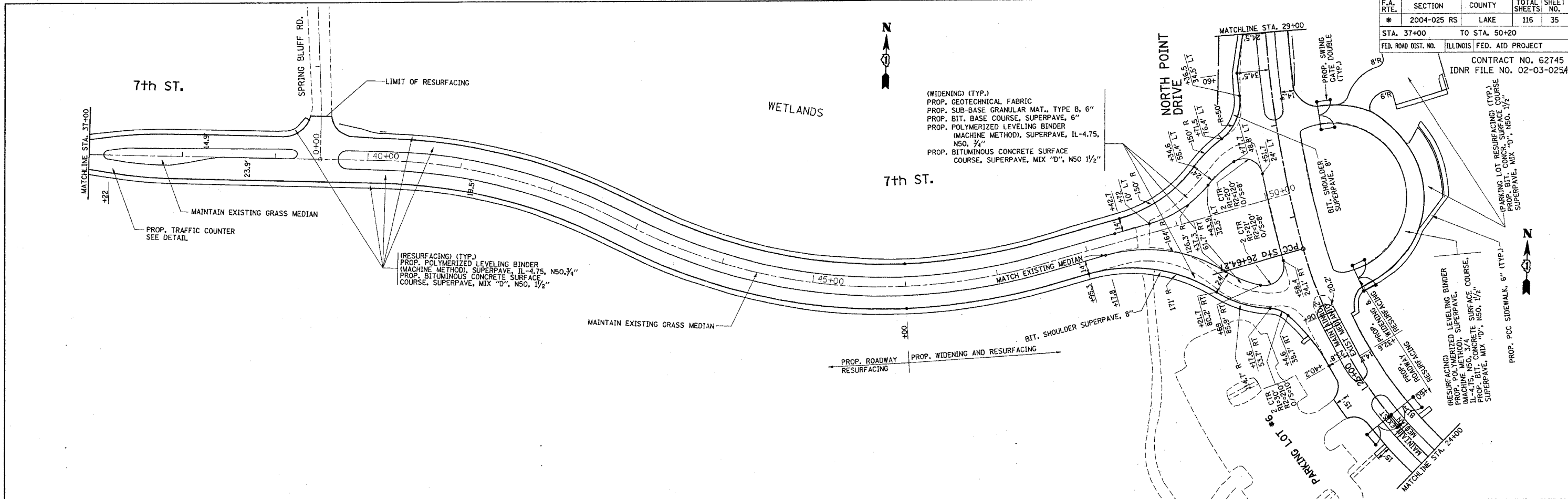


\*REF-top71h2  
\*REF-p71h2

F.A. RTE.	SECTION	COUNTY	TOTAL SHEETS	SHEET NO.
* 2004-025 RS	LAKE	ILLINOIS	116	35
STA. 37+00 TO STA. 50+20		FED. ROAD DIST. NO. ILLINOIS FED. AID PROJECT		
		CONTRACT NO. 62745 IDNR FILE NO. 02-03-0254		



**NORTH POINT MARINA  
7TH STREET  
PROP. ROADWAY PLAN AND PROFILE**  
SCALE: VERT. 5      DRAWN BY: CAD  
          HORIZ. 50      DATE: 1/25/2006