

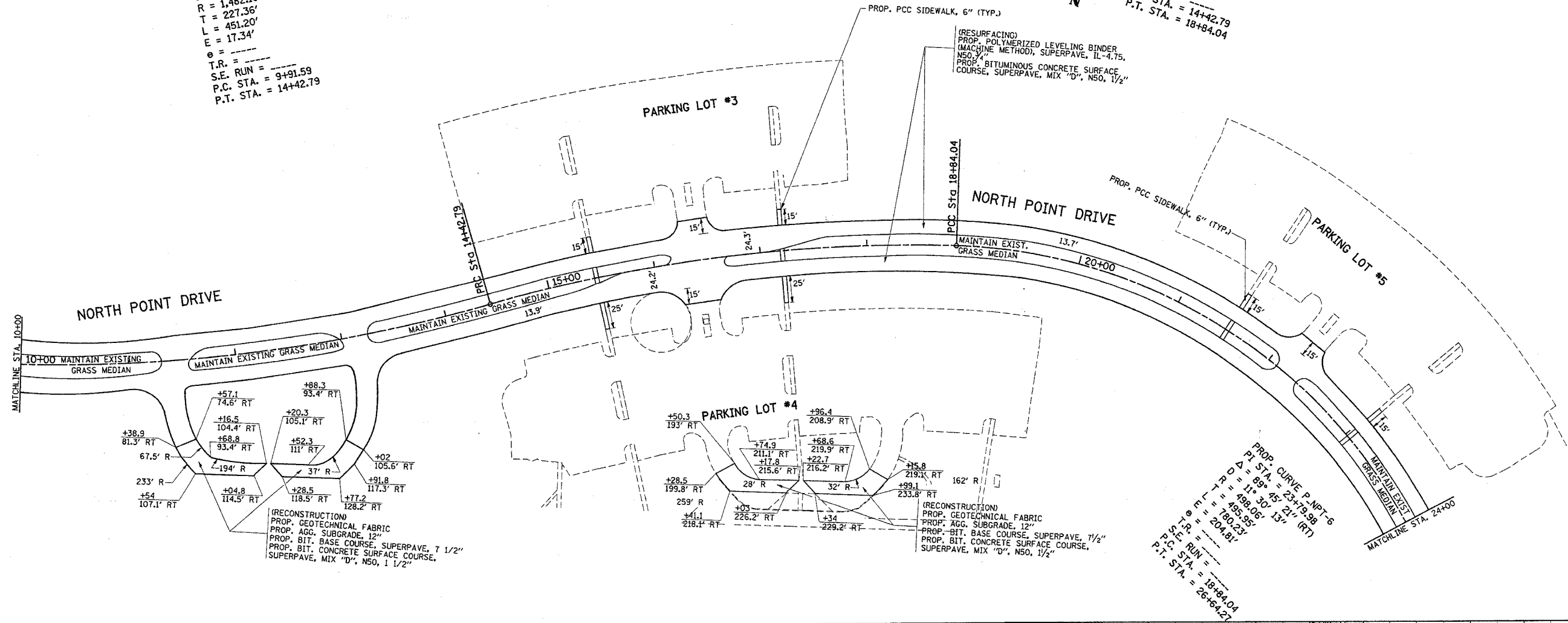
\*REF-topnpt2  
\*REF-prnpt2

F.A. RTE.	SECTION	COUNTY	TOTAL SHEETS	SHEET NO.
*	2004-025 RS	LAKE	116	37
STA. 9+00		TO STA. 24+00		
FED. ROAD DIST. NO.		ILLINOIS FED. AID PROJECT		
* PARK ROADS		CONTRACT NO. 62745		
		IDNR FILE NO. 02-03-025A		

PROP. CURVE P-NPT-4  
PI STA. = 12+18.95  
 $\Delta = 17^\circ 26' 34''$  (LT)  
D =  $3^\circ 51' 57''$   
R = 1,482.10'  
T = 227.36'  
L = 451.20'  
E = 17.34'  
 $\theta =$  ---  
T.R. = ---  
S.E. RUN = ---  
P.C. STA. = 9+91.59  
P.T. STA. = 14+42.79

PROP. CURVE P-NPT-5  
PI STA. = 16+65.23  
 $\Delta = 17^\circ 54' 59''$  (RT)  
D =  $4^\circ 03' 37''$   
R = 1,411.09'  
T = 222.44'  
L = 441.25'  
E = 17.42'  
 $\theta =$  ---  
T.R. = ---  
S.E. RUN = ---  
P.C. STA. = 14+42.79  
P.T. STA. = 18+84.04

PROP. CURVE P-NPT-6  
PI STA. = 23+75.98  
 $\Delta = 89^\circ 45' 21''$  (RT)  
D =  $11^\circ 30' 13''$   
R = 485.85'  
T = 80.23'  
L = 204.81'  
 $\theta =$  ---  
T.R. = ---  
S.E. RUN = ---  
P.C. STA. = 18+84.04  
P.T. STA. = 26+64.27



Station	Elevation	Station	Elevation	Station	Elevation	Station	Elevation	Station	Elevation	Station	Elevation	Station	Elevation	Station	Elevation	Station	Elevation	Station	Elevation	Station	Elevation								
10+00	593.81	11+00	592.83	12+00	592.03	13+00	591.12	14+00	589.88	15+00	591.09	16+00	591.13	17+00	591.44	18+00	592.17	19+00	592.84	20+00	592.59	21+00	591.87	22+00	591.52	23+00	591.63	24+00	592.08

NORTH POINT MARINA  
NORTH POINT DR.  
PROP. ROADWAY PLAN AND PROFILE  
SCALE: VERT. 5  
HORIZ. 50  
DRAWN BY: CAD  
DATE: 1/25/2006