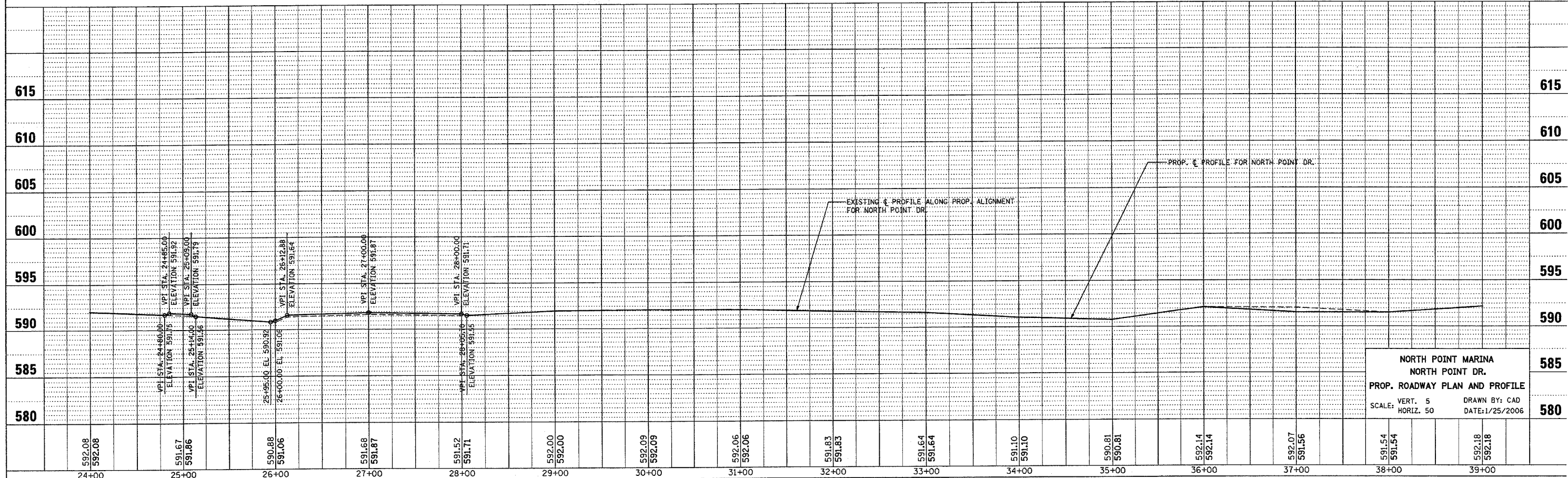
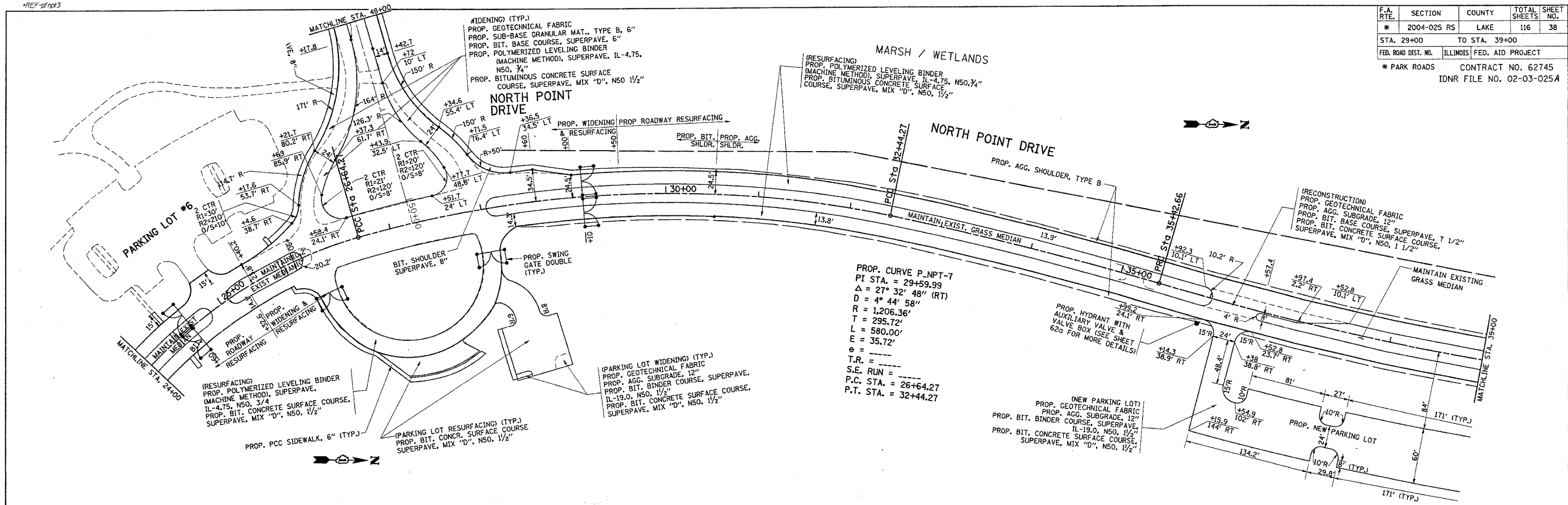


\*REF-topnpt3  
\*REF-plnpt3

F.A. RTE.	SECTION	COUNTY	TOTAL SHEETS	SHEET NO.
*	2004-025 RS	LAKE	116	38
STA. 29+00		TO STA. 39+00		
FED. ROAD DIST. NO.		ILLINOIS FED. AID PROJECT		
* PARK ROADS		CONTRACT NO. 62745		
		IDNR FILE NO. 02-03-025A		



**NORTH POINT MARINA  
NORTH POINT DR.  
PROP. ROADWAY PLAN AND PROFILE**

SCALE: VERT. 5  
HORIZ. 50

DRAWN BY: CAD  
DATE: 1/25/2006