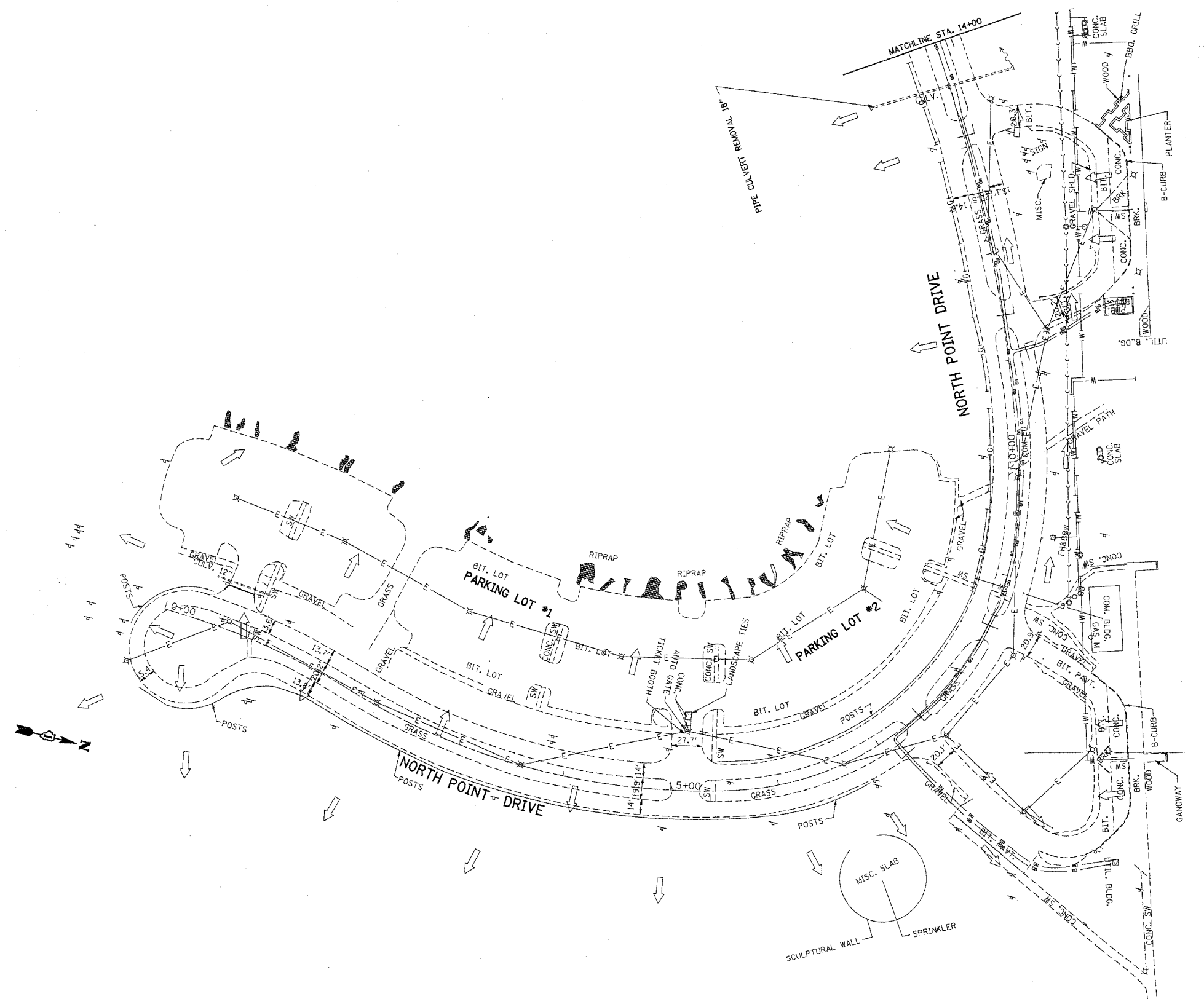


F.A. RTE.	SECTION	COUNTY	TOTAL SHEETS	SHEET NO.
*	2004-025-RS	LAKE	116	51
STA.		TO STA.		
FED. ROAD DIST. NO.		ILLINOIS FED. AID PROJECT		
* PARK ROADS		CONTRACT NO. 62745		
		IDNR FILE NO. 2-03-025A		



T = TELEPHONE
W = WATER
E = PRIVATE PARK ELECTRICAL
UG = COMMONWEALTH EDISON
G = GAS

REVISIONS	
NAME	DATE

ILLINOIS DEPARTMENT OF TRANSPORTATION

**NORTH POINT MARINA
NORTH POINT DRIVE
EXISTING UTILITY & DRAINAGE PLAN**

SCALE: VERT. 1"=50'
HORIZ. 1"=50'
DATE: 3/6/2006

DRAWN BY
CHECKED BY

PLOT DATE = 3/6/2006
PLOT SCALE = 1/8"=1'-0"
USER NAME = utrc01hd

BRIDGE TO FISHING PIER