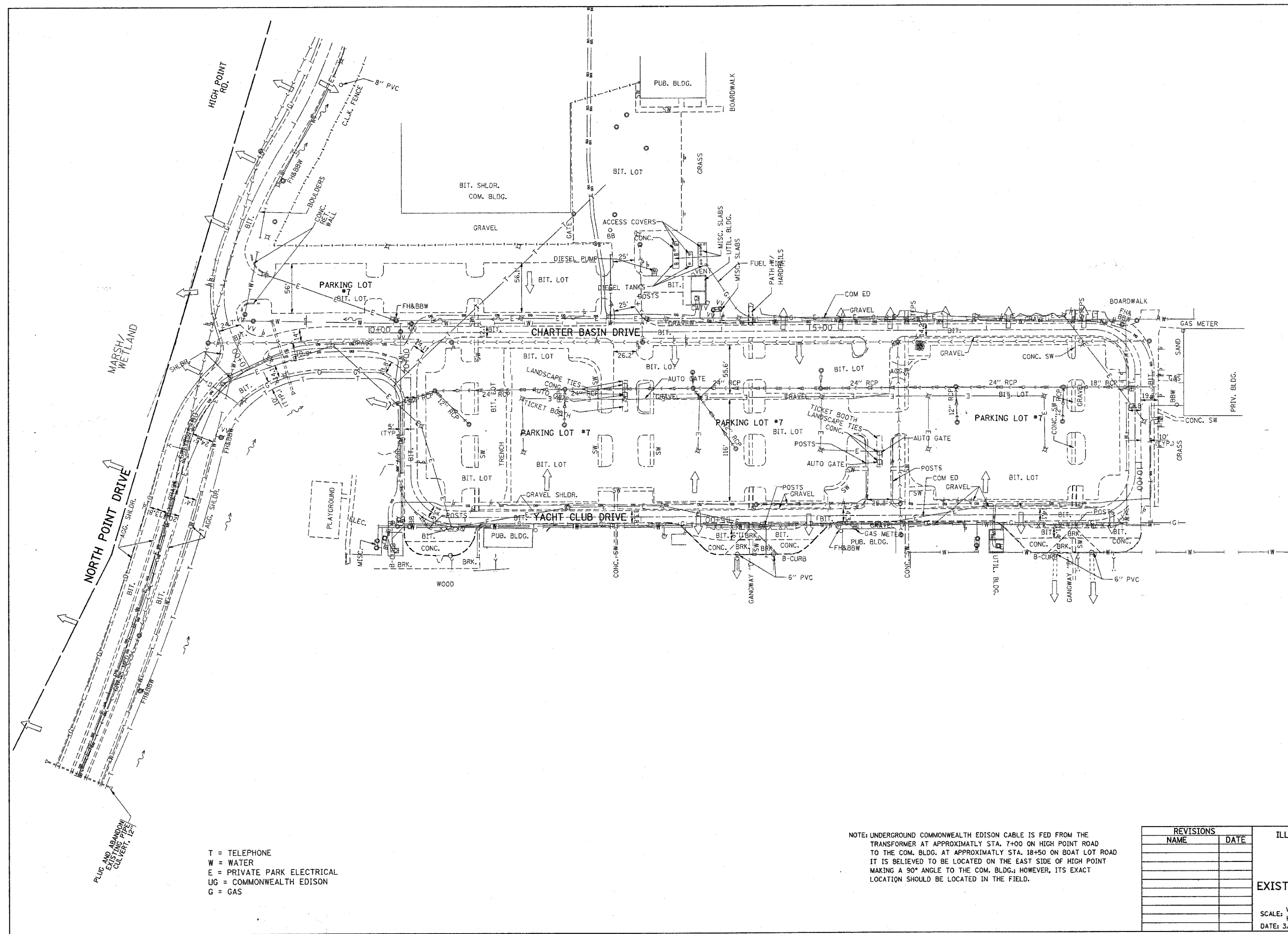


F.A. RTE.	SECTION	COUNTY	TOTAL SHEETS	SHEET NO.
*	2004-025-R5	LAKE	116	54
STA.		TO STA.		
FED. ROAD DIST. NO.	ILLINOIS	FED. AID PROJECT		
* PARK ROADS		CONTRACT NO. 62745		
IDNR FILE NO. 2-03-025A				



T = TELEPHONE
W = WATER
E = PRIVATE PARK ELECTRICAL
UG = COMMONWEALTH EDISON
G = GAS

NOTE: UNDERGROUND COMMONWEALTH EDISON CABLE IS FED FROM THE TRANSFORMER AT APPROXIMATELY STA. 7+00 ON HIGH POINT ROAD TO THE COM. BLDG. AT APPROXIMATELY STA. 18+50 ON BOAT LOT ROAD IT IS BELIEVED TO BE LOCATED ON THE EAST SIDE OF HIGH POINT MAKING A 90° ANGLE TO THE COM. BLDG.; HOWEVER, ITS EXACT LOCATION SHOULD BE LOCATED IN THE FIELD.

REVISIONS	
NAME	DATE

ILLINOIS DEPARTMENT OF TRANSPORTATION

**NORTH POINT MARINA
YACHT CLUB DRIVE
EXISTING UTILITY & DRAINAGE PLAN**

SCALE: VERT. 1"=50'
HORIZ. 1"=50'
DATE: 3/6/2006

DRAWN BY
CHECKED BY

PLOT DATE = 3/6/2006
FILE NAME = c:\p\proj\025\034\025\ah.drain.dgn
PLOT SCALE = 5/8"=1'-0"
USER NAME = jlr-ghk