

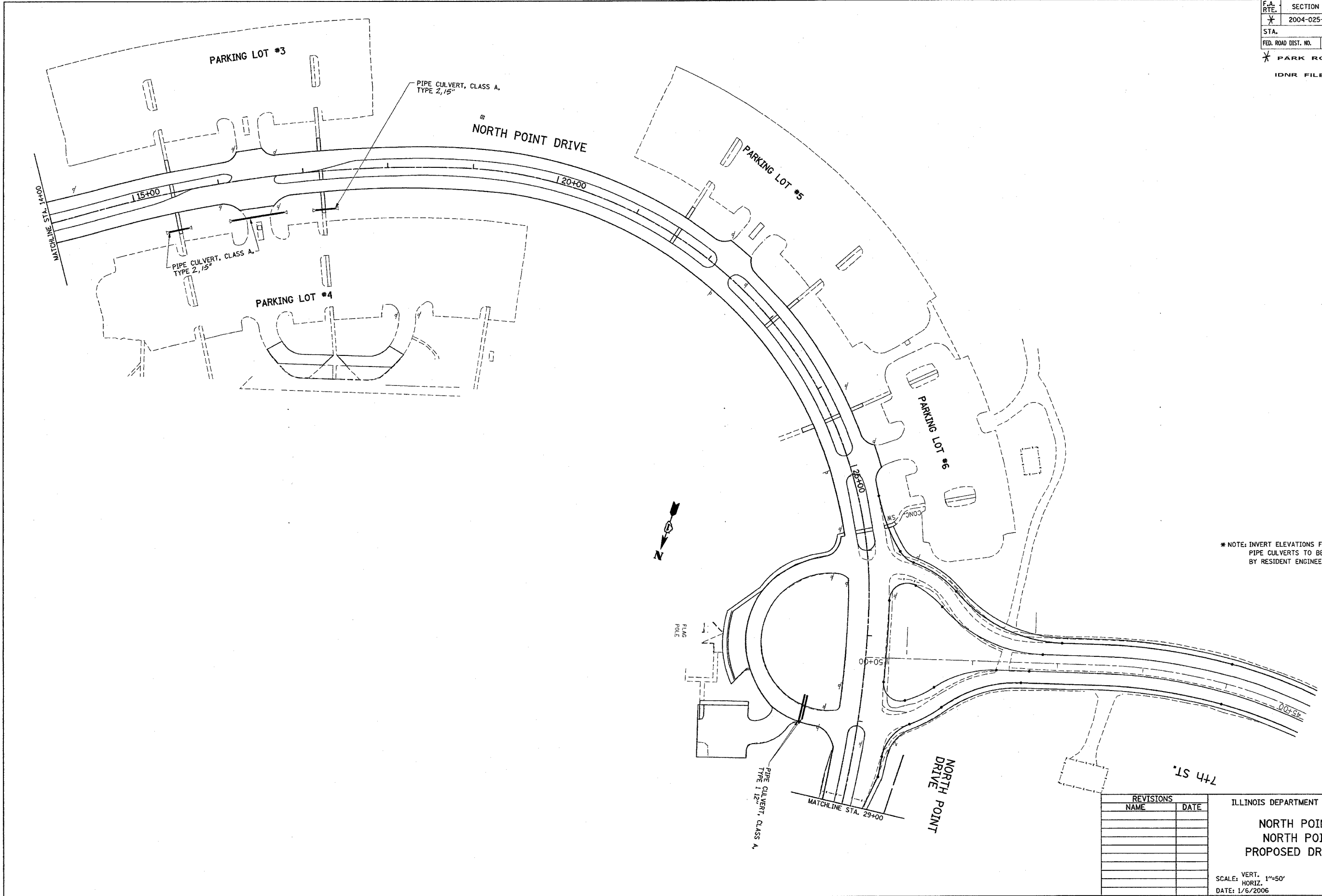
F.A. RTE.	SECTION	COUNTY	TOTAL SHEETS	SHEET NO.
*	2004-025-RS	LAKE	116	58

STA.	TO STA.

FED. ROAD DIST. NO. ILLINOIS FED. AID PROJECT

* PARK ROADS

IDNR FILE NO. 2-03-025A



* NOTE: INVERT ELEVATIONS FOR PROPOSED PIPE CULVERTS TO BE DETERMINED BY RESIDENT ENGINEER.

PLOT DATE = 1/6/2006
 PLOT SCALE = 1/8\"/>

REVISIONS	
NAME	DATE

ILLINOIS DEPARTMENT OF TRANSPORTATION

**NORTH POINT MARINA
NORTH POINT DRIVE
PROPOSED DRAINAGE PLAN**

SCALE: VERT. 1"=50'
 HORIZ. 1"=50'
 DATE: 1/6/2006

DRAWN BY
 CHECKED BY