

*REF-TOPOOI
*REF-PPOI

CONTRACT NO. 62883

F.A.P. RITE	SECTION	COUNTY	TOTAL SHEETS	SHEET NO.
342	(G & 12) 1-N-1	LAKE	10	11
STA. 88+00		TO STA. 103+00		
FED. ROAD DIST. NO. ILLINOIS FED. AID PROJECT				
PIN # 07-33-100-001 STATE OF ILLINOIS DEPARTMENT OF TRANSPORTATION				

EXIST. CURVE E-IL120-1
PI STA. = 89+27.49
 $\Delta = 4^\circ 13' 05''$ (LT)
 $D = 0^\circ 59' 28''$
 $R = 5,781.16'$
 $T = 217.95'$
 $L = 435.69'$
 $E = 4.11'$
 $\theta = \dots$
 $T.R. = \dots$
S.E. RUN = \dots
P.C. STA. = 87+09.54
P.T. STA. = 91+45.23

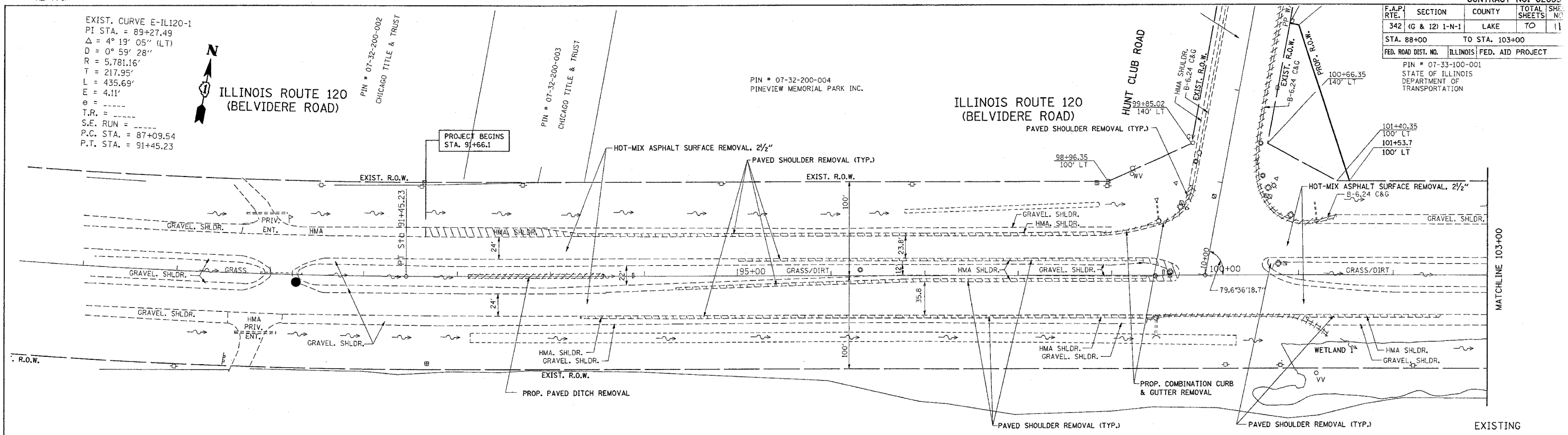


ILLINOIS ROUTE 120
(BELVIDERE ROAD)

PIN # 07-32-200-002
CHICAGO TITLE & TRUST

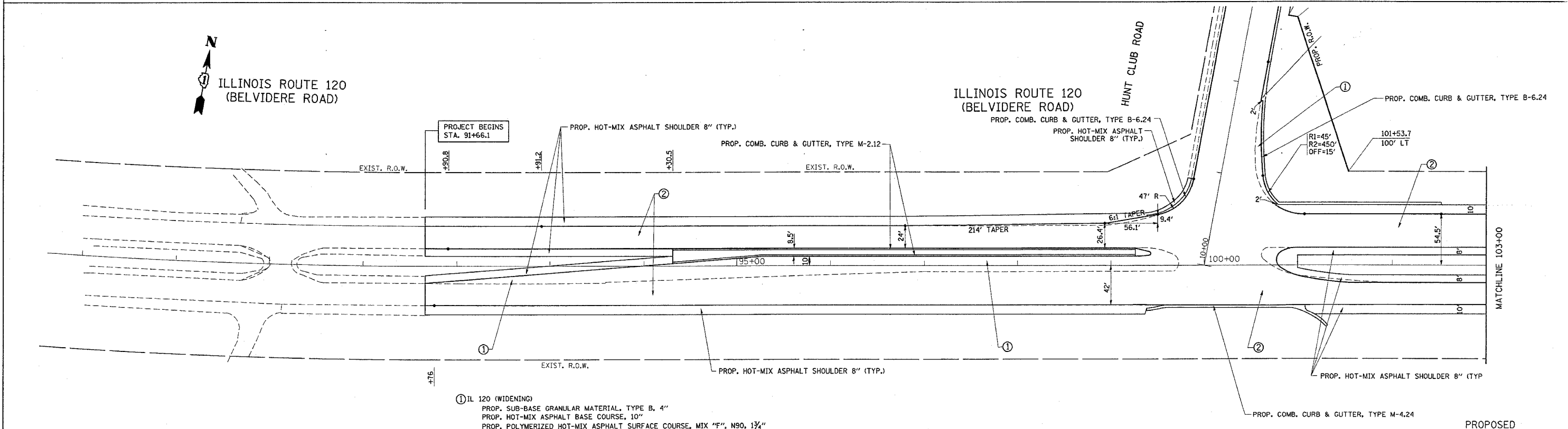
PIN # 07-32-200-003
CHICAGO TITLE & TRUST

PIN # 07-32-200-004
PINEVIEW MEMORIAL PARK INC.



ILLINOIS ROUTE 120
(BELVIDERE ROAD)

PROJECT BEGINS
STA. 91+66.1



- ① IL 120 (WIDENING)
PROP. SUB-BASE GRANULAR MATERIAL, TYPE B, 4"
PROP. HOT-MIX ASPHALT BASE COURSE, 10"
PROP. POLYMERIZED HOT-MIX ASPHALT SURFACE COURSE, MIX "F", N90, 1 3/4"
PROP. POLYMERIZED LEVELING BINDER (MACHINE METHOD), SUPERPAVE, IL-4.75, N50, 3/4"
- ② RESURFACING FOR EXISTING PAVEMENT
PROP. POLYMERIZED HOT-MIX ASPHALT SURFACE COURSE, SUPERPAVE, MIX "F", N90, 1 3/4"
PROP. POLYMERIZED LEVELING BINDER (MACHINE METHOD) SUPERPAVE, IL-4.75, N50, 3/4"

REVISIONS	
NAME	DATE

ILLINOIS DEPARTMENT OF TRANSPORTATION
ROADWAY PLAN
IL. RTE. 120 AT HUNT CLUB RD.
SCALE: VERT. 1"=50'
HORIZ. 1"=50'
DATE 10/16/2006
DRAWN BY
CHECKED BY

PLOT DATE = 10/16/2006
FILE NAME = c:\proj\p06\p06a\01010883\sh_rdw.dgn
PLOT SCALE = 1/8"=1'-0" / IN.
USER NAME = bward