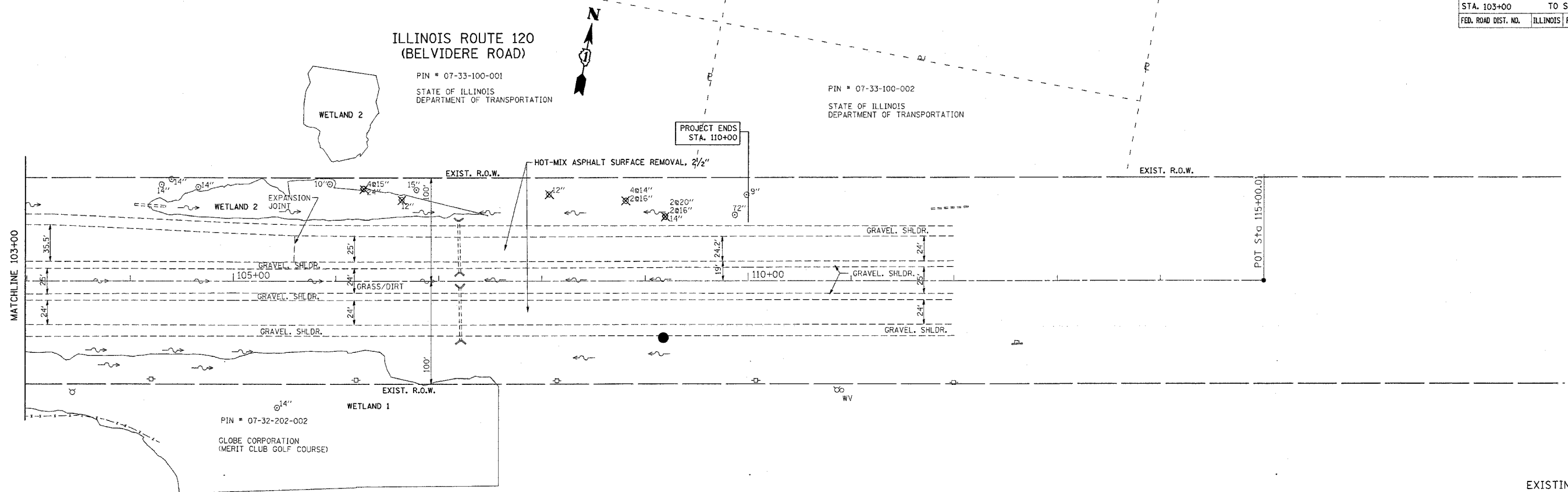


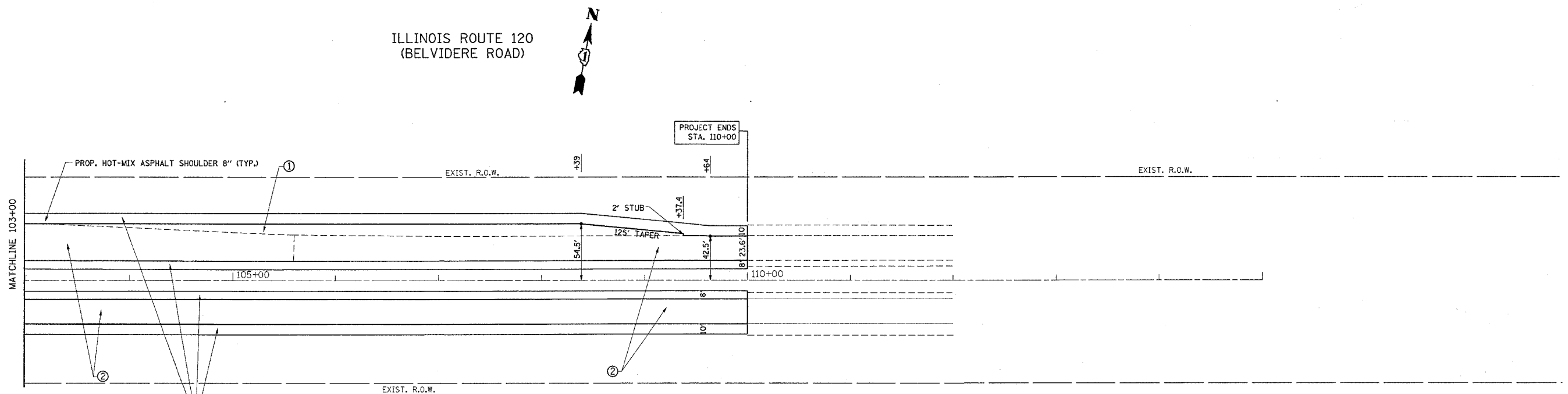
*REF-TP002
*REF-PP02

CONTRACT NO. 6286

| F.A.P. RTE. | SECTION | COUNTY | TOTAL SHEETS | SHEET NO. |
|---------------------|----------------|---------------------------|--------------|-----------|
| 342 | (G & 12) 1-N-1 | LAKE | 70 | 12 |
| STA. 103+00 | | TO STA. 112+00 | | |
| FED. ROAD DIST. NO. | | ILLINOIS FED. AID PROJECT | | |



EXISTING



PROPOSED

- ① IL 120 (WIDENING)
 - PROP. SUB-BASE GRANULAR MATERIAL, TYPE B, 4"
 - PROP. HOT-MIX ASPHALT BASE COURSE, 10"
 - PROP. POLYMERIZED HOT-MIX ASPHALT SURFACE COURSE, MIX "F", N90, 1 1/4"
 - PROP. POLYMERIZED LEVELING BINDER (MACHINE METHOD), SUPERPAVE, IL-4.75, N50, 3/4"
- ② RESURFACING FOR EXISTING PAVEMENT
 - PROP. POLYMERIZED HOT-MIX ASPHALT SURFACE COURSE, SUPERPAVE, MIX "F", N90, 1 1/4"
 - PROP. POLYMERIZED LEVELING BINDER (MACHINE METHOD) SUPERPAVE, IL-4.75, N50, 3/4"

| REVISIONS | |
|-----------|------|
| NAME | DATE |
| | |
| | |
| | |
| | |
| | |
| | |
| | |
| | |
| | |
| | |

ILLINOIS DEPARTMENT OF TRANSPORTATION
ROADWAY PLAN
IL. RTE. 120 AT HUNT CLUB RD.
SCALE: VERT. 1"=50'
DATE 10/16/2005
DRAWN BY
CHECKED BY

PLOT DATE = 10/16/2005
 FILE NAME = I:\103000\103000.dgn
 PLOT SCALE = 1/8" = 100'
 USER NAME = bauer-dl