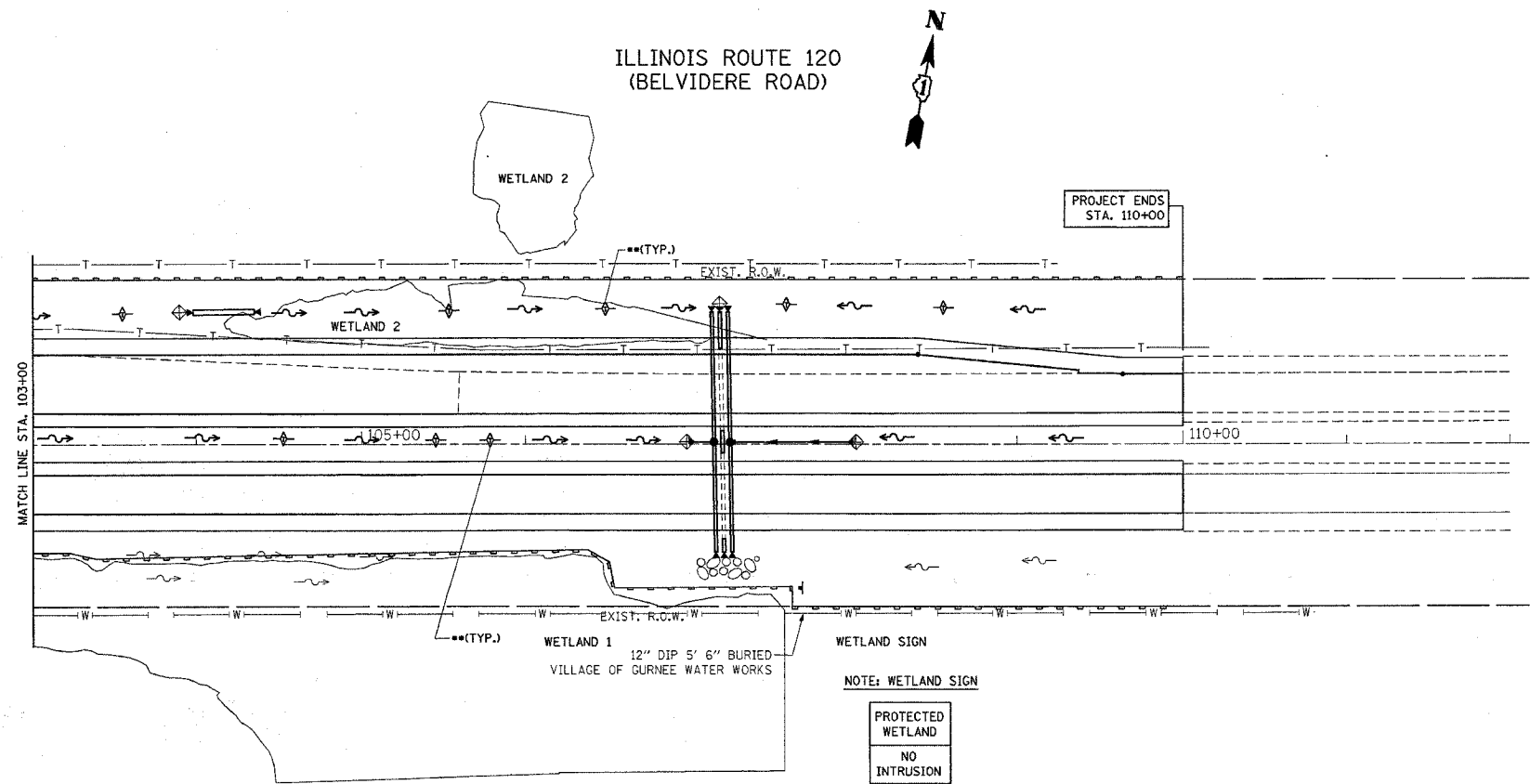
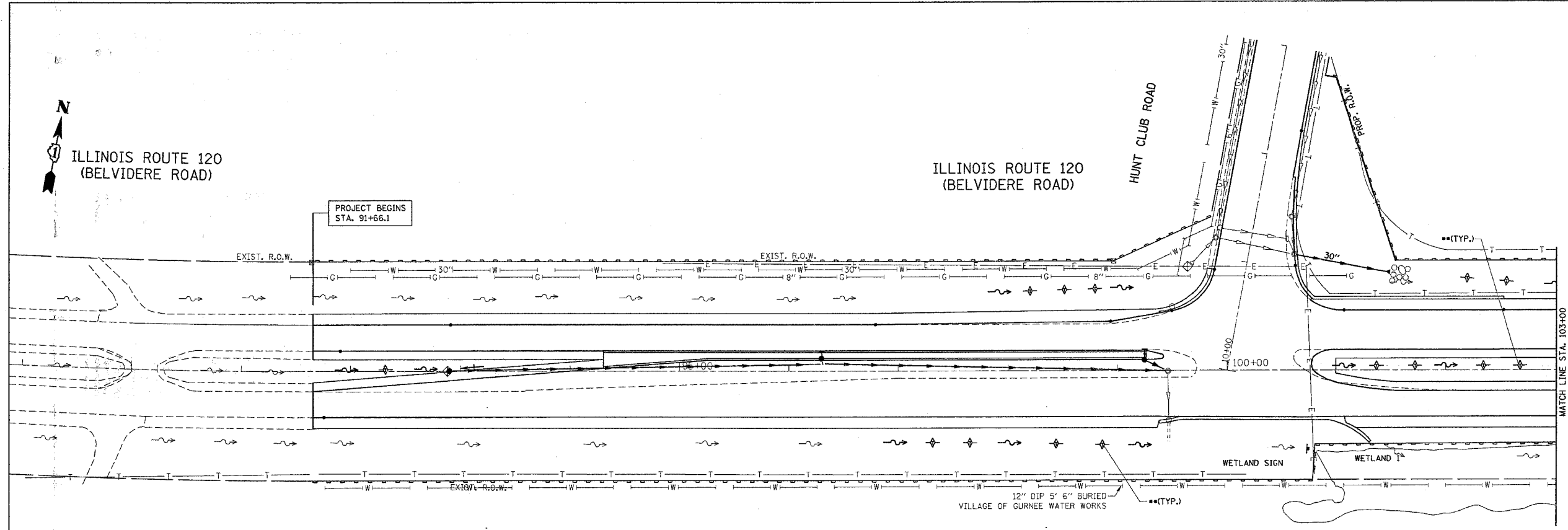


*REF=er001
*REF=er002

CONTRACT NO. 62883

F.A.P. RTE.	SECTION	COUNTY	TOTAL SHEETS	SHEET NO.
342		LAKE	70	20
STA.		TO STA.		
FED. ROAD DIST. NO.		ILLINOIS FED. AID PROJECT		



LEGEND FOR EROSION CONTROL NOTES

- PERIMETER EROSION BARRIER
- ** — DITCH CHECK @ EVERY 1' DROP IN DITCH ELEVATION
- SWALE
- DITCH
- ⊕ INLET PROTECTION

NOTE:

1. TEMPORARY EROSION CONTROL SEEDING TO BE PROVIDED AT ALL ERODIBLE BARE EARTH AREAS, REFER TO SPECIAL PROVISION.
2. NPDES PERMIT IS REQUIRED FOR THE PROJECT.
3. THE CONTRACTORS SHALL PROVIDE & MAINTAIN INLET PROTECTION AT ALL PROPOSED DRAINAGE STRUCTURES AND AT OTHER LOCATIONS DIRECTED BY THE ENGINEER AND/OR SHOWN ON THE PLANS. INLET PROTECTION SHALL BE PLACED IMMEDIATELY AFTER THE AREA INVOLVED HAS BEEN DISTURBED.
4. ALL EROSION CONTROL MEASURES SHALL BE IN ACCORDANCE WITH THE REQUIREMENTS OF THE STANDARD SPECIFICATION AND THE APPLICABLE STATE STANDARDS SPECIFICATION AND OF THE APPLICABLE STATE STANDARDS FOR THE ENTIRE DURATION OF THE CONTRACT OR UNTIL SUCH A TIME AS DIRECTED BY THE ENGINEER.
5. AT ANY AREA WHERE THERE IS NO PROPOSED GRADING, THE EXISTING GROUND COVER SHALL REMAIN.
6. "WETLANDS" SIGN SHALL BE ATTACHED TO THE PERIMETER EROSION BARRIER POST AT EACH WETLAND. SIGNS ARE AVAILABLE FROM THE ROADSIDE DEVELOPMENT UNIT.

NOTE: WETLAND SIGN



REVISIONS	
NAME	DATE

ILLINOIS DEPARTMENT OF TRANSPORTATION
IL. RTE. 120 AT HUNT CLUB RD.
EROSION CONTROL PLAN

SCALE: VERT. 1"=50'
HORIZ. DATE 10/6/2006
DRAWN BY
CHECKED BY

PLOT DATE = 10/6/2006
FILE NAME = c:\p\proj\er001\er001.dgn
PLOT SCALE = 1/8"=1'-0"
USER NAME = gsgstamoc