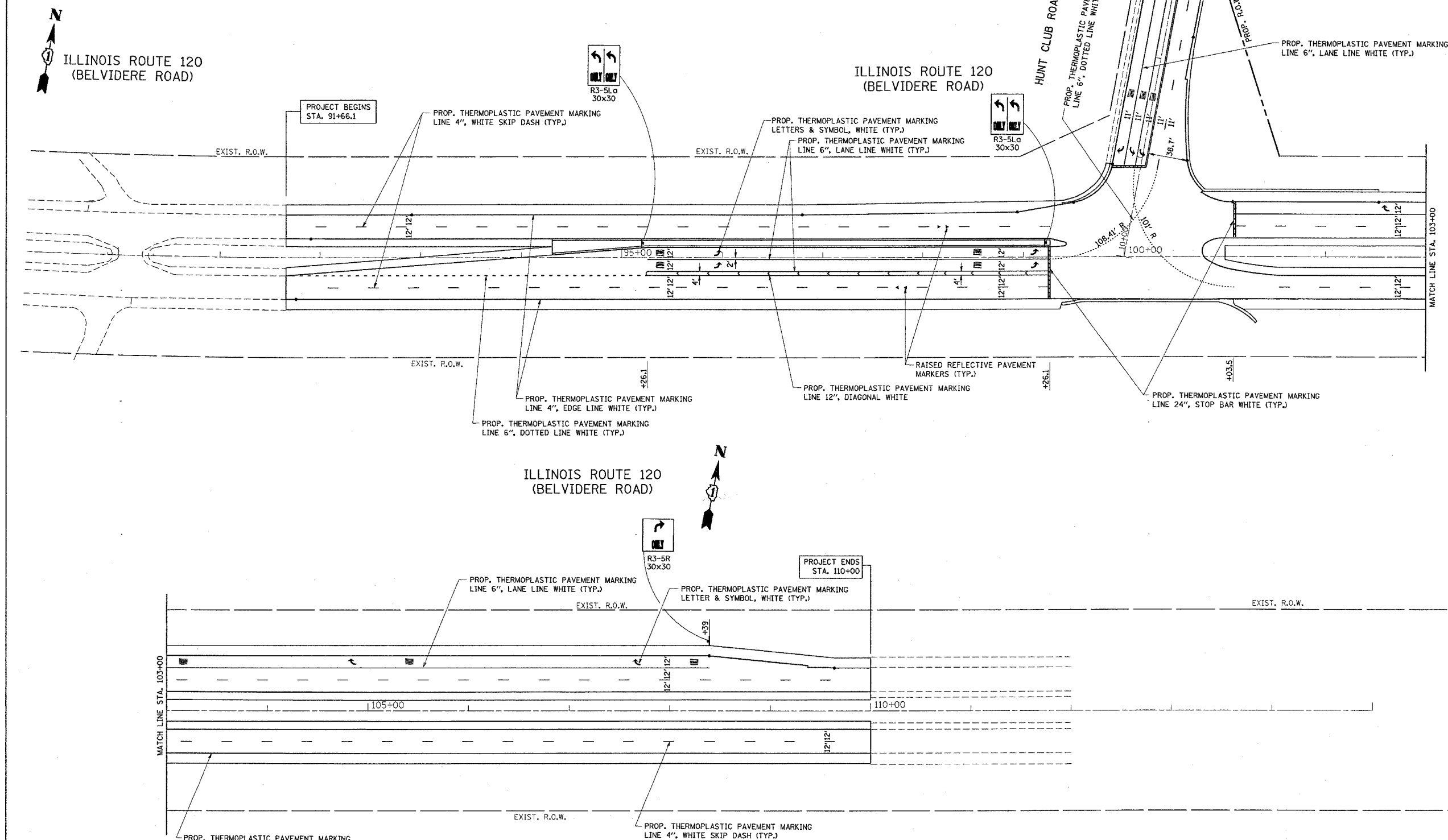


F.A.P. RTE.	SECTION	COUNTY	TOTAL SHEETS	SHEET NO.
342		LAKE	70	31
STA. 90+00		TO STA. 112+00		
FED. ROAD DIST. NO.		ILLINOIS FED. AID PROJECT		



ILLINOIS ROUTE 120
(BELVIDERE ROAD)

ILLINOIS ROUTE 120
(BELVIDERE ROAD)

HUNT CLUB ROAD

ILLINOIS ROUTE 120
(BELVIDERE ROAD)

PLOT DATE = 10/6/2006
 FILE NAME = s:\projects\p01803\plan\pkm.dgn
 USER NAME = sp01803

NOTE:
 RAISED REFLECTIVE PAVEMENT MARKERS ARE TO BE PLACED THROUGHOUT THE IMPROVEMENT LIMITS. DOUBLE LANE LINE MARKERS SHALL BE PLACED. SEE DISTRICT DETAIL TC-11.

REVISIONS	
NAME	DATE

ILLINOIS DEPARTMENT OF TRANSPORTATION
 IL. RTE. 120 AT HUNT CLUB RD.
 PAVEMENT MARKING PLAN

SCALE: VERT. 1"=50'
 HORIZ. 1"=50'
 DATE 10/6/2006

DRAWN BY
 CHECKED BY