

TEMPORARY TRAFFIC SIGNAL AND REMOVAL LEGEND

	PROPOSED	EXISTING		PROPOSED	EXISTING
TEMPORARY CONTROLLER CABINET			G.S. CONDUIT IN TRENCH OR PUSHED		
TEMPORARY SERVICE INSTALLATION, (P) POLE OR (G) GROUND MOUNT			TEMPORARY SPAN WIRE, TETHER WIRE, AND CABLE		
TEMPORARY TRAFFIC SIGNAL HEAD			COMMON TRENCH		
SPAN WIRE MOUNTED ORIGINAL LOCATION			UNIT DUCT		
TEMPORARY TRAFFIC SIGNAL HEAD SPAN WIRE MOUNTED SECONDARY LOCATION			PERFORMED DETECTOR LOOP		
TEMPORARY PEDESTRIAN SIGNAL HEAD, BRACKET MOUNTED			MICROWAVE VEHICLE SENSOR		
TEMPORARY WOOD POLE (CLASS 5 OR BETTER) 45 FOOT (13.7m) MINIMUM			VIDEO DETECTOR		
EXISTING SIGNAL POST AND FOUNDATION TO BE REMOVED			CLOSED CIRCUIT TV		
STEEL MAST ARM ASSEMBLY AND POLE			EMERGENCY VEHICLE SYSTEM DETECTOR		
ALUMINUM MAST ARM ASSEMBLY AND POLE			CONFIRMATION BEACON		
COMBINATION MAST ARM ASSEMBLY AND POLE, STEEL WITH LUMINAIRE			TEMPORARY PEDESTRIAN PUSHBUTTON DETECTOR		
EXISTING STREET LIGHT, FOUNDATION AND LUMINAIRE TO REMAIN			DETECTOR LOOP, TYPE I		
HANDHOLE			DETECTION ZONE		
HEAVY-DUTY HANDHOLE					

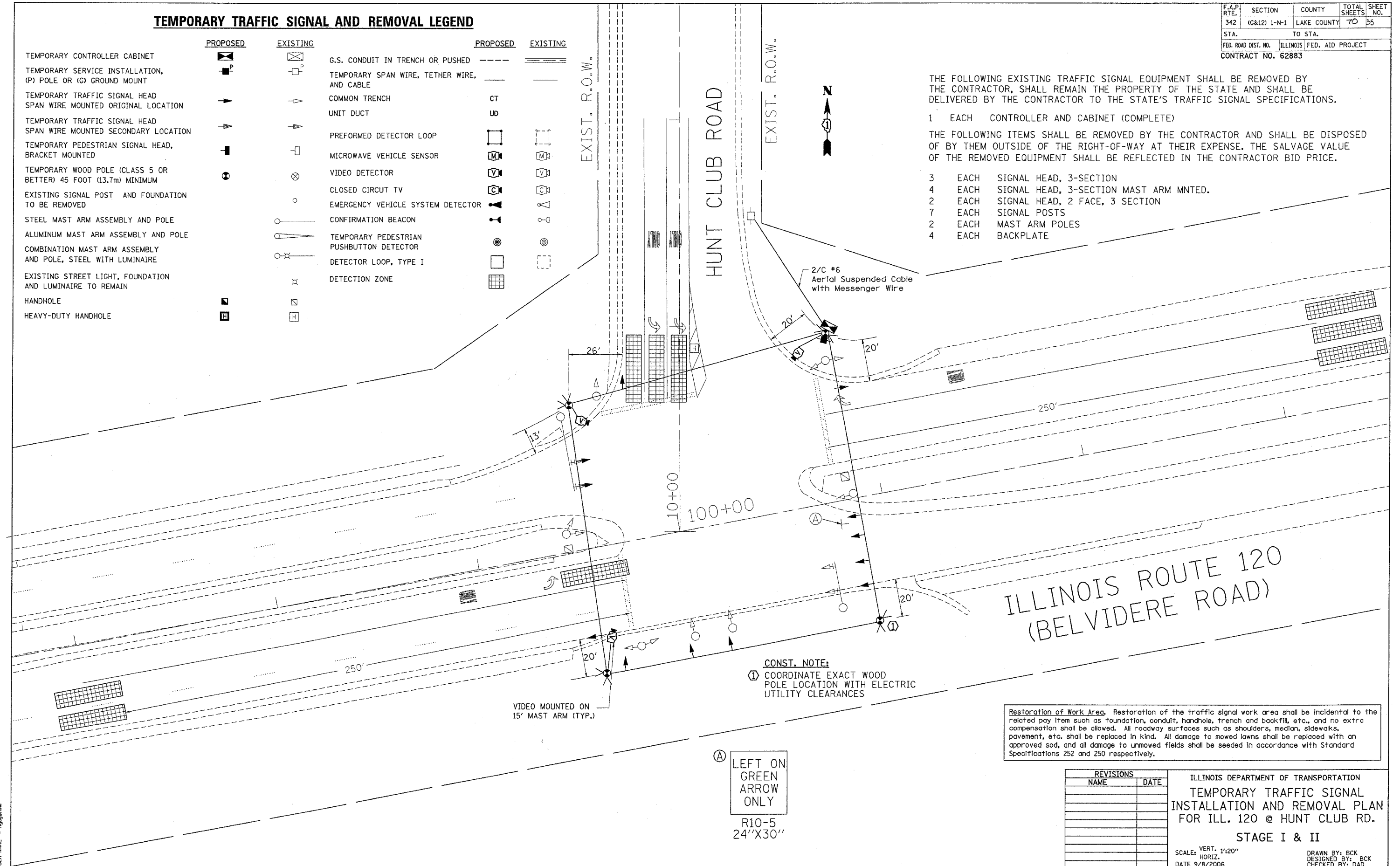
F.A.P. RTE. 1	SECTION	COUNTY	TOTAL SHEETS	SHEET NO.
342	(G&I2) 1-N-1	LAKE COUNTY	70	35
STA.	TO STA.			
FED. ROAD DIST. NO.	ILLINOIS FED. AID PROJECT			
CONTRACT NO. 62883				

THE FOLLOWING EXISTING TRAFFIC SIGNAL EQUIPMENT SHALL BE REMOVED BY THE CONTRACTOR, SHALL REMAIN THE PROPERTY OF THE STATE AND SHALL BE DELIVERED BY THE CONTRACTOR TO THE STATE'S TRAFFIC SIGNAL SPECIFICATIONS.

- 1 EACH CONTROLLER AND CABINET (COMPLETE)

THE FOLLOWING ITEMS SHALL BE REMOVED BY THE CONTRACTOR AND SHALL BE DISPOSED OF BY THEM OUTSIDE OF THE RIGHT-OF-WAY AT THEIR EXPENSE. THE SALVAGE VALUE OF THE REMOVED EQUIPMENT SHALL BE REFLECTED IN THE CONTRACTOR BID PRICE.

- 3 EACH SIGNAL HEAD, 3-SECTION
- 4 EACH SIGNAL HEAD, 3-SECTION MAST ARM MNTD.
- 2 EACH SIGNAL HEAD, 2 FACE, 3 SECTION
- 7 EACH SIGNAL POSTS
- 2 EACH MAST ARM POLES
- 4 EACH BACKPLATE



ILLINOIS ROUTE 120
(BELVIDERE ROAD)

Restoration of Work Area. Restoration of the traffic signal work area shall be incidental to the related pay item such as foundation, conduit, handhole, trench and backfill, etc., and no extra compensation shall be allowed. All roadway surfaces such as shoulders, median, sidewalks, pavement, etc. shall be replaced in kind. All damage to mowed lawns shall be replaced with an approved sod, and all damage to unmowed fields shall be seeded in accordance with Standard Specifications 252 and 250 respectively.

REVISIONS	
NAME	DATE

ILLINOIS DEPARTMENT OF TRANSPORTATION
**TEMPORARY TRAFFIC SIGNAL
 INSTALLATION AND REMOVAL PLAN
 FOR ILL. 120 @ HUNT CLUB RD.**
STAGE I & II
 SCALE: VERT. 1"=20"
 HORIZ. DATE 9/8/2006
 DRAWN BY: BCK
 DESIGNED BY: BCK
 CHECKED BY: DAD

PLOT DATE = 9/29/2006
 PLOT SCALE = 20,000/1 IN.
 USER NAME = nguyennam