

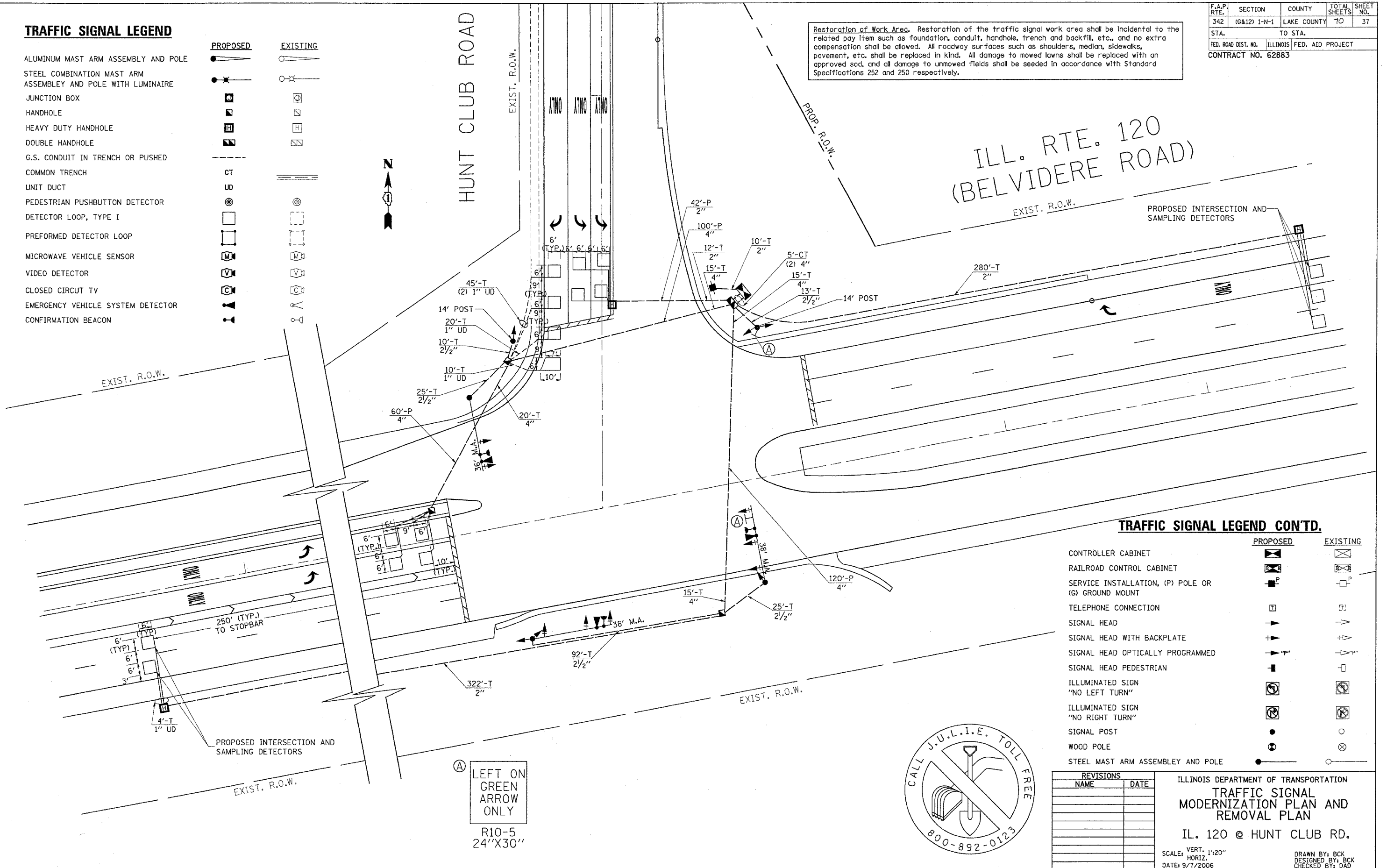
F.A.P. RTE.	SECTION	COUNTY	TOTAL SHEETS	SHEET NO.
342	(G&I) 1-N-1	LAKE COUNTY	70	37
STA.		TO STA.		
FED. ROAD DIST. NO.		ILLINOIS FED. AID PROJECT		
CONTRACT NO. 62883				

TRAFFIC SIGNAL LEGEND

	PROPOSED	EXISTING
ALUMINUM MAST ARM ASSEMBLY AND POLE		
STEEL COMBINATION MAST ARM ASSEMBLY AND POLE WITH LUMINAIRE		
JUNCTION BOX		
HANDHOLE		
HEAVY DUTY HANDHOLE		
DOUBLE HANDHOLE		
G.S. CONDUIT IN TRENCH OR PUSHED		
COMMON TRENCH		
UNIT DUCT		
PEDESTRIAN PUSHBUTTON DETECTOR		
DETECTOR LOOP, TYPE I		
PREFORMED DETECTOR LOOP		
MICROWAVE VEHICLE SENSOR		
VIDEO DETECTOR		
CLOSED CIRCUIT TV		
EMERGENCY VEHICLE SYSTEM DETECTOR		
CONFIRMATION BEACON		

Restoration of Work Area. Restoration of the traffic signal work area shall be incidental to the related pay item such as foundation, conduit, handhole, trench and backfill, etc., and no extra compensation shall be allowed. All roadway surfaces such as shoulders, median, sidewalks, pavement, etc. shall be replaced in kind. All damage to mowed lawns shall be replaced with an approved sod, and all damage to unmowed fields shall be seeded in accordance with Standard Specifications 252 and 250 respectively.

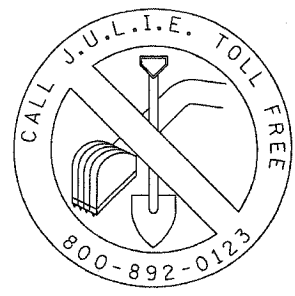
ILL. RTE. 120
(BELVIDERE ROAD)



TRAFFIC SIGNAL LEGEND CONT'D.

	PROPOSED	EXISTING
CONTROLLER CABINET		
RAILROAD CONTROL CABINET		
SERVICE INSTALLATION, (P) POLE OR (G) GROUND MOUNT		
TELEPHONE CONNECTION		
SIGNAL HEAD		
SIGNAL HEAD WITH BACKPLATE		
SIGNAL HEAD OPTICALLY PROGRAMMED		
SIGNAL HEAD PEDESTRIAN		
ILLUMINATED SIGN "NO LEFT TURN"		
ILLUMINATED SIGN "NO RIGHT TURN"		
SIGNAL POST		
WOOD POLE		
STEEL MAST ARM ASSEMBLY AND POLE		

Ⓐ LEFT ON GREEN ARROW ONLY
R10-5
24"X30"



REVISIONS	
NAME	DATE

ILLINOIS DEPARTMENT OF TRANSPORTATION
TRAFFIC SIGNAL MODERNIZATION PLAN AND REMOVAL PLAN
IL. 120 @ HUNT CLUB RD.
SCALE: VERT. 1"=20"
HORIZ. 1"=40"
DATE: 9/7/2006
DRAWN BY: BCK
DESIGNED BY: BCK
CHECKED BY: DAD

PLOT DATE = 9/7/2006
PLOT SCALE = 24"X30" / 1"=40"
USER NAME = nguyen