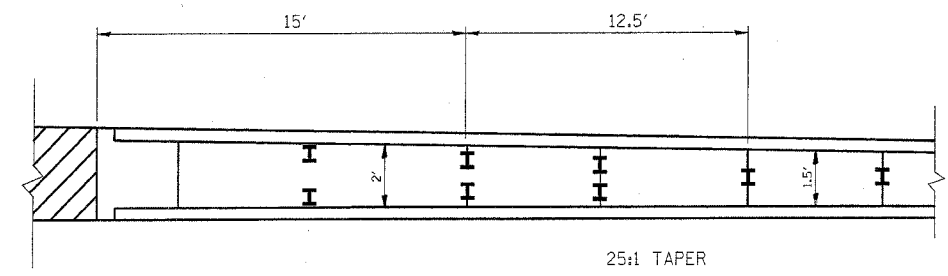
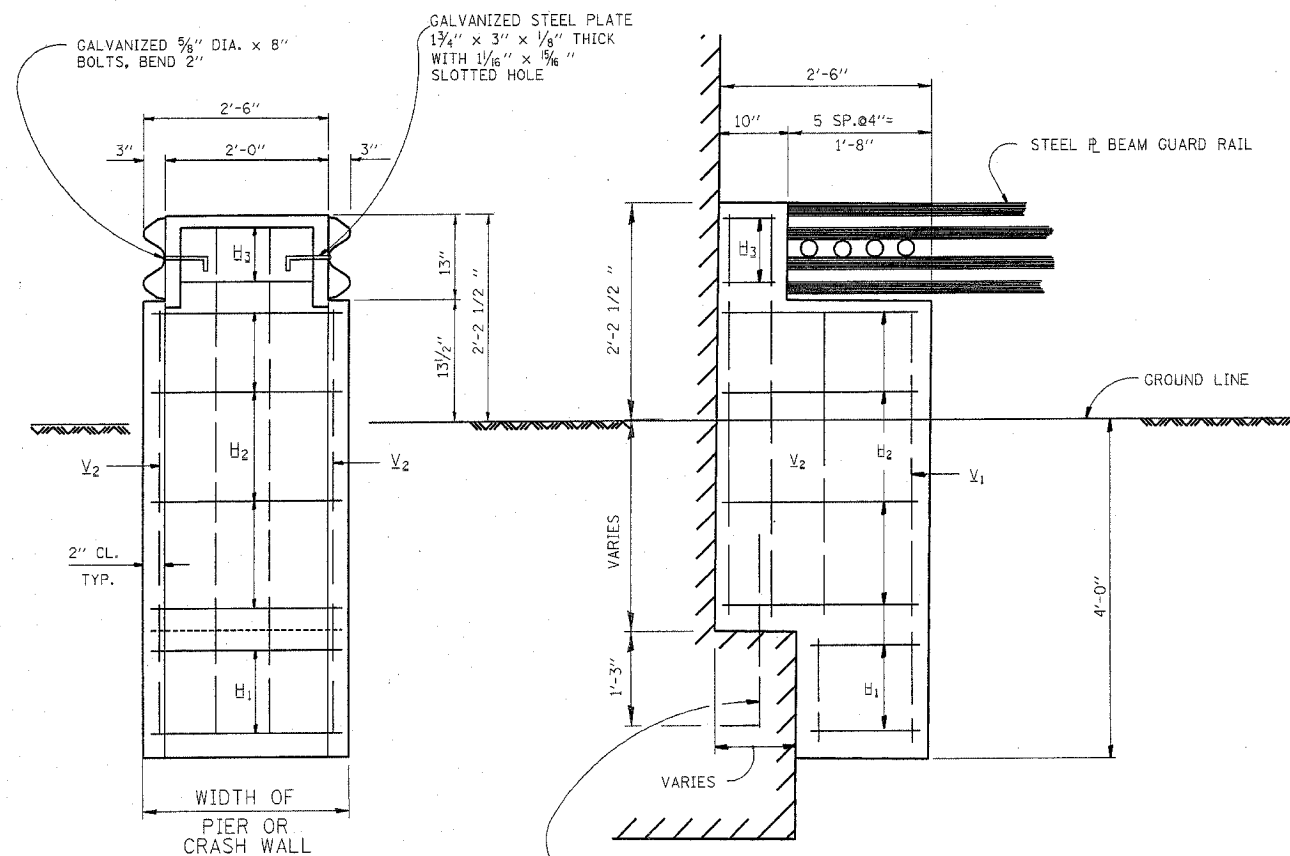


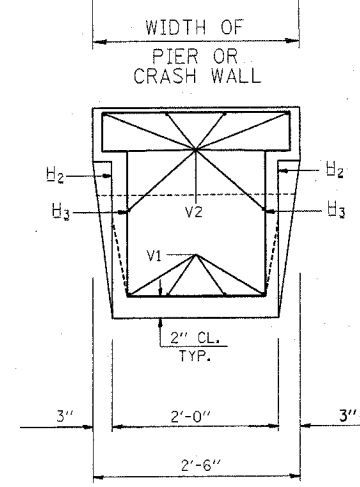
P.A. DIST.	SECTION	COUNTY	TOTAL SHEETS	SHEET NO.
VAR. 2005-027 GRR	*		19	9
STA.	TO STA.			
FED. ROAD DIST. NO.	SUBNO.	FED. AID PROJECT		

* McHENRY, LAKE, KANE, COOK AND DUPAGE
CONTRACT 62961

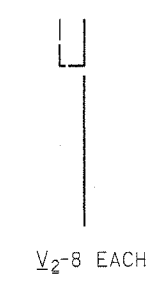
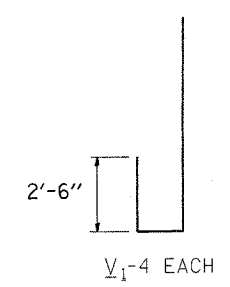
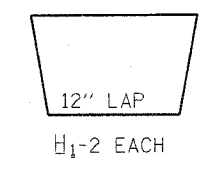
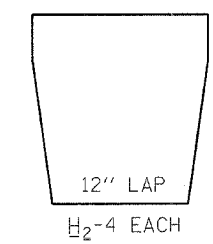
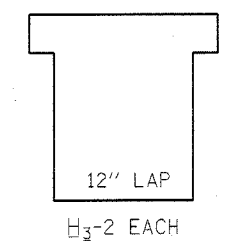


GUARD RAIL TRANSITIONS

NOTES: CLASS SI CONCRETE SHALL BE USED THROUGHOUT REINFORCEMENT TO BE SIZE #4 UNLESS OTHERWISE NOTED



#6 DOWEL BARS
DRILL AND GROUT ON ROW OF THREE BARS



ILLINOIS DEPARTMENT OF TRANSPORTATION

**TYPICAL DETAILS FOR
STEEL PLATE BEAM GUARDRAIL
ANCHORAGE REPAIR**

SCALE: NONE
DATE: 10/2/2006

DRAWN BY: R.F.L.
CHECKED BY:

REVISIONS	
NAME	DATE
CREATED	10-31-88