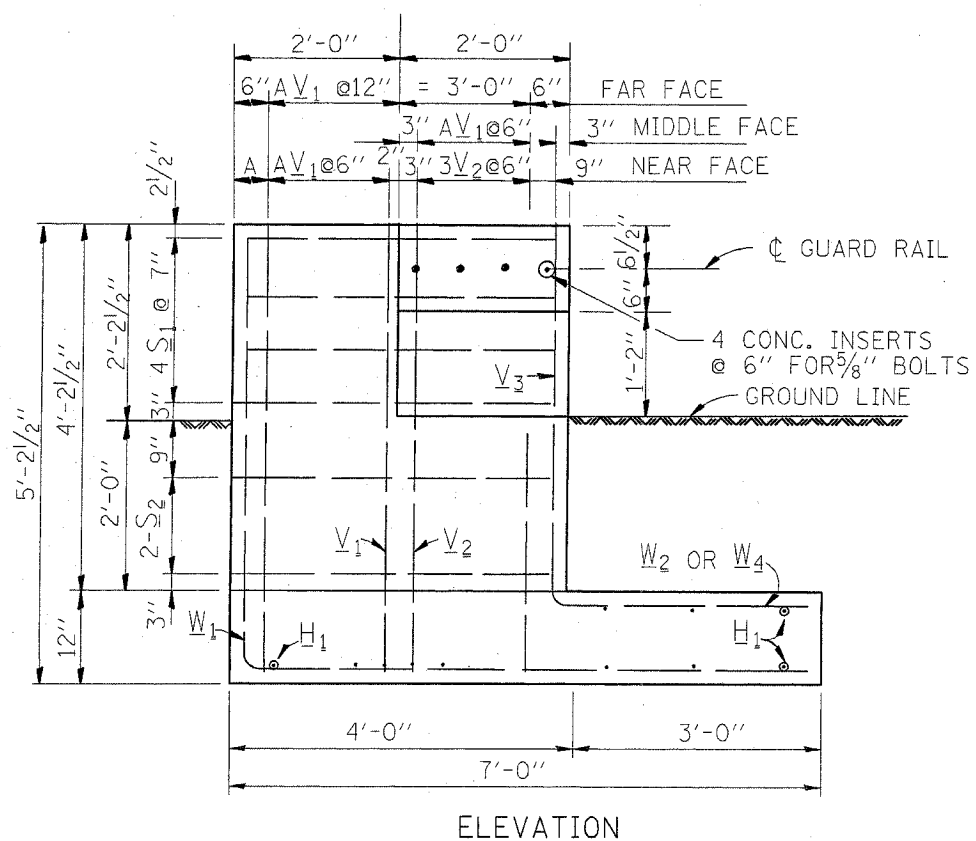
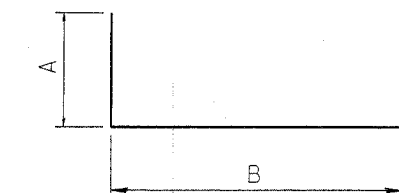


F.L. NO.	SECTION	COUNTY	TOTAL SHEETS	SHEET NO.
VAR. 2005-027 GRR	*	19	10	
STA.	TO STA.			
FED. ROAD DIST. NO.	ILLINOIS	FED. AID PROJECT		

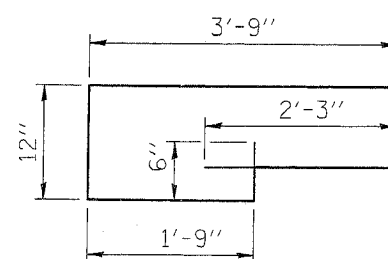
\* MCHENRY, LAKE, KANE, COOK AND DUPAGE  
CONTRACT 62961



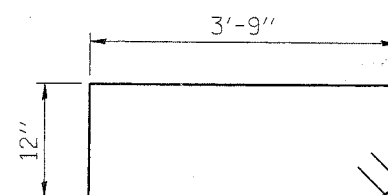
ELEVATION



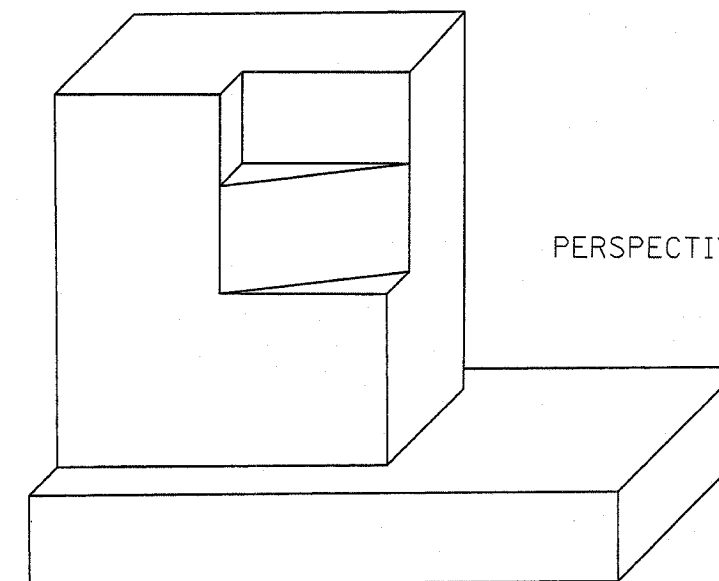
BAR	A	B	A+B
V <sub>1</sub>	4'-8"	6"	5'-2"
V <sub>2</sub>	2'-6"	6"	3'-0"
W <sub>1</sub>	4'-8"	6'-6"	11'-2"
W <sub>2</sub>	2'-0"	3'-0"	5'-0"
W <sub>4</sub>	4'-2"	3'-0"	7'-2"



S<sub>1</sub> BAR



S<sub>2</sub> BAR

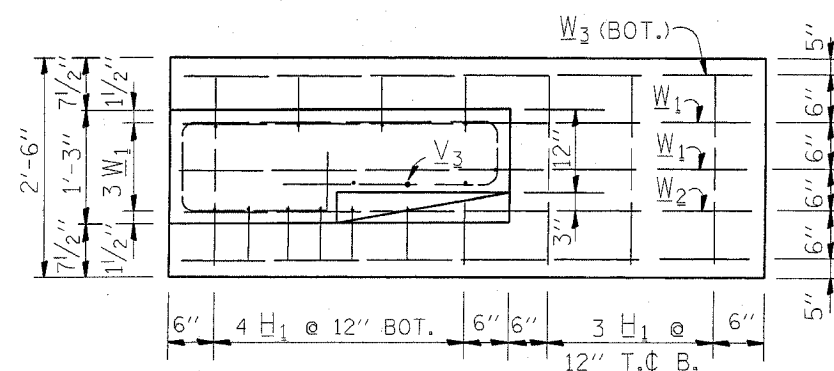


PERSPECTIVE VIEW

NOTES: CLASS SI CONCRETE SHALL BE USED THROUGHOUT  
REINFORCEMENT TO BE SIZE #4 UNLESS OTHERWISE NOTED

BAR SCHEDULE

BAR	NO.	LENGTH
V <sub>1</sub>	8	5'-2"
V <sub>2</sub>	3	3'-0"
V <sub>3</sub>	4	3'-0"
W <sub>1</sub>	3	11'-2"
W <sub>2</sub>	1	5'-0"
W <sub>3</sub>	2	6'-6"
W <sub>4</sub>	2	7'-2"
S <sub>1</sub>	4	10'-0"
S <sub>2</sub>	2	10'-0"
H <sub>1</sub>	1	2'-3"



FOOTING PLAN

THIS SHEET IS FOR INFORMATION ONLY

REVISIONS	
NAME	DATE
CREATED	10-31-88

ILLINOIS DEPARTMENT OF TRANSPORTATION

TYPICAL DETAIL FOR  
GUARDRAIL ANCHOR BLOCK  
REPAIR

SCALE: NONE  
DATE: 10/2/2006

DRAWN BY R.F.L.  
CHECKED BY