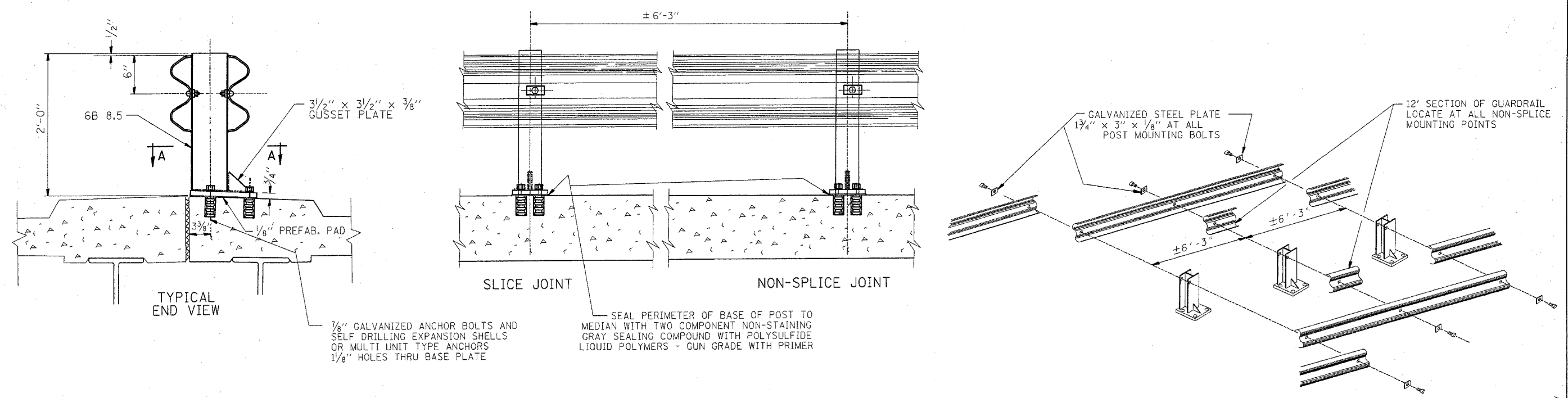


F. A. REV.	SECTION	COUNTY	TOTAL SHEETS	SHEET NO.
	VAR. 2005-027 GRR	* 19	12	
STA.	TO STA.			
FED. ROAD DIST. NO.	ILLINOIS	FED. AID PROJECT		

* McHENRY, LAKE, KANE, COOK AND DUPAGE
CONTRACT 62961

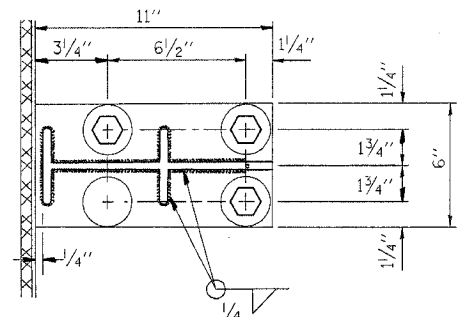


7/8" GALVANIZED ANCHOR BOLTS AND SELF DRILLING EXPANSION SHELLS OR MULTI UNIT TYPE ANCHORS 1/8" HOLES THRU BASE PLATE

SEAL PERIMETER OF BASE OF POST TO MEDIAN WITH TWO COMPONENT NON-STAINING GRAY SEALING COMPOUND WITH POLYSULFIDE LIQUID POLYMERS - GUN GRADE WITH PRIMER

NOTE:
 DIAMOND TIPPED DRILL SHALL BE USED TO DRILL THRU REINFORCEMENT BARS

NOTE:
 POSTS SHALL BE HOT DIPPED GALVANIZED AFTER FABRICATION IN ACCORDANCE WITH ASTM DESIGNATIONS A-123 AND A-385.
 TWO PERCENT (2%) OF ALL ANCHOR BOLTS SHALL BE TEST LOADED IN PLACE. MIN. TEST LOAD = 8 KIPS.
 ALL BOLTS, NUTS AND WASHERS SHALL BE GALVANIZED IN ACCORDANCE WITH ASTM DESIGNATION A-153.
 FOR MATERIAL COMPOSITION OF PREFABRICATED PAD, SEE ARTICLE 54.9(F), (BEARING AND ANCHORAGE), OF THE STANDARD SPECIFICATIONS.
 PROVIDE 1-1/8" AND 2-1/16" GALVANIZED STEEL SHIMS FOR 25% OF THE POSTS.
 IF ONE ANCHOR BOLT FAILS DURING TEST, TWO OTHER ANCHOR BOLTS SHALL BE TESTED. TESTING EQUIPMENT CAN BE OBTAINED FROM BOLT COMPANIES.



SEC. A-A

THIS SHEET IS FOR INFORMATION ONLY

REVISIONS	
NAME	DATE
CREATED	10-31-88

ILLINOIS DEPARTMENT OF TRANSPORTATION

TYPICAL DETAIL FOR CENTER LONGITUDINAL JOINT GUARDRAIL JOINT

SCALE: NONE
 DATE: 10/2/2006

DRAWN BY R.F.L.
 CHECKED BY