

5				
ROUTE	SECTION	COUNTY	TOTAL SHEETS	SHEET NUMBER
FAP 342	530CRC-PP	COOK	15	4

CONTRACT 62962

**SUMMARY OF QUANTITIES**

URBAN  
100% STATE

CODE NUMBER	DESCRIPTION	UNIT	CONSTRUCTION TYPE CODE 1000 TOTAL QUANTITY
X4420092	CLASS D PATCHES, TYPE II, 9 1/2"	SQ YD	265
X4420093	CLASS D PATCHES, TYPE III, 9 1/2"	SQ YD	300
X4420099	CLASS D PATCHES, TYPE IV, 9 1/2"	SQ YD	1860
67000400	ENGINEER'S FIELD OFFICE, TYPE A	CAL MO	3
67100100	MOBILIZATION	L SUM	1
<del>70106800</del>	<del>CHANGEABLE MESSAGE SIGN</del>	<del>CAL MO</del>	<del>3</del>
X7011015	TRAFFIC CONTROL AND PROTECTION (EXPRESSWAYS)	L SUM	1
*78008210	POLYUREA PAVEMENT MARKING TYPE I - LINE 4"	FOOT	1200
*78008220	POLYUREA PAVEMENT MARKING TYPE I - LINE 5"	FOOT	1040
*78008240	POLYUREA PAVEMENT MARKING TYPE I - LINE 8"	FOOT	420
*78100100	RAISED REFLECTIVE PAVEMENT MARKER	EACH	120

\* SPECIALTY ITEMS

ILLINOIS DEPARTMENT OF TRANSPORTATION

IL RTE. 53 EXTENSION  
SUMMARY OF QUANTITIES

△ Rev. 1-5-07

Rev.

<b>ROUTE</b>	<b>SECTION</b>	<b>COUNTY</b>	<b>TOTAL SHEETS</b>	<b>SHEET NUMBER</b>
FAP 342	530CRC-PP	COOK	15	6

CONTRACT 62962

**NORTHBOUND IL RTE. 53 EXTENSION**

PATCH LOCATION NUMBER	STATION	LANE	Northbound			TYPE
			SIZE (L X W)	AREA (SQ. YD.)		
1	445+17					
2	444+50	1	100 x 12	133.3		IV
3	444+50	2	100 x 12	133.3		IV
5	447+67	1	50 x 12	66.6		IV
6	448+50	1	40 x 12	53.3		IV
8	453+40	2	40 x 12	53.3		IV
12	462+79	1 & 2	8 x 12	10.7 x 2		II
13	463+50	1 & 2	20 x 12	26.7 x 2		IV
14	466+61	1	12 x 12	16.0		III
15	466+67	2	42 x 12	56.0		IV
15A	468+00	2	8 x 12	10.7		II
16	469+95	1	20 x 12	26.7		IV
17	469+95	2	20 x 12	26.7		IV
18	471+55	2	20 x 12	26.7		IV
19	471+53	1	6 x 12	8.0		II
20	471+78	1 & 2	6 x 12	8.0 x 2		II
20A	472+00	2	8 x 12	10.7		II
20B	474+00	1	8 x 12	10.7		II
21	474+77	2	45 x 12	60.0		IV
21A	474+95	1	20 x 12	26.6		IV
22	475+54	1 & 2	12 x 12	16.0 x 2		III
23	475+96	1 & 2	12 x 12	16.0 x 2		III
24	476+47	2	25 x 12	33.3		IV
24A	476+75	2	8 x 12	10.7		II
25	477+17	2	24 x 12	32.0		IV
25	477+17	2	15 x 6	10.0		II

PATCH LOCATION NUMBER	STATION	LANE	Northbound			TYPE
			SIZE (L X W)	AREA (SQ. YD.)		
26	478+00	2	30 x 12	40.0		IV
27	479+25	2	40 x 12	53.3		IV
28	479+37	1	15 x 12	20.0		III
29	479+79	2	8 x 12	10.7		II
30	480+97	1 & 2	6 x 12	8.0 x 2		II
31	481+52	2	15 x 12	20.0		III
32	482+02	1 & 2	8 x 12	10.7 x 2		II
33	482+62	1	35 x 12	46.7		IV
34	482+62	2	35 x 12	46.7		IV
35	483+74	1	8 x 12	10.7		II
36						
37	486+09	2	8 x 12	10.7		II
38	486+58	1	20 x 12	26.7		IV
39	486+58	2	20 x 12	26.7		IV
40	486+85	1	10 x 12	13.3		II
41	487+60	1	30 x 12	40.0		IV
42	489+45	1	10 x 12	13.3		II
43	489+45	2	10 x 12	13.3		II
44	489+76	1	12 x 12	16.0		III
45	489+76	2	12 x 12	16.0		III
46	491+59	1/Ramp*	12 x 12	16.0		III
47	491+60	2/Ramp*	12 x 12	16.0		III

\* NB IL 53 EXT TO WB LAKE-COOK RD RAMP

- CENTER LINE OF IL RTE. 68 (DUNDEE) : STA. 435+44
- ALL STATIONINGS ARE CENTER OF EACH PATCHING LOCATIONS.
- x 2 INDICATES TWO PATCHES AT THE SAME STATION

ILLINOIS DEPARTMENT OF TRANSPORTATION  
**IL ROUTE 53 EXTENSION  
PAVEMENT PATCHING SCHEDULE  
1 OF 2**

ROUTE	SECTION	COUNTY	TOTAL SHEETS	SHEET NUMBER
FAP 342	530CRC-PP	COOK	15	7

CONTRACT 62962

**SOUTHBOUND IL RTE. 53 EXTENSION**

PATCH LOCATION NUMBER	LANE	STATION	Southbound			TYPE
			SIZE (L X W)	AREA (SQ. YD.)		
1	2	489+25	15 x 12	20.0	III	
2	2	487+30	6 x 12	8.0	II	
3	2	484+96	20 x 12	26.67	III	
3A	2	483+25	8 x 12	10.67	II	
4	2	482+53	45 x 12	60.0	IV	
5	2	481+62	40 x 12	53.3	IV	
5A	1	481+40	30 x 12	40.0	IV	
6	2	480+98	12 x 12	16.0	III	
7	2	480+31	62 x 12	82.7	IV	
8	2	479+64	33 x 12	44.0	IV	
10	2	478+40	104 x 12	138.67	IV	
12	2	475+95	32 x 12	42.7	IV	
13	2	474+95	10 x 12	13.3	II	
14	2	473+67	120 x 12	160.0	IV	
14A	1	472+00	12 x 12	16.0	III	
14B	1	473+67	14 x 12	18.7	III	
17	2	471+31	14 x 12	18.7	III	
18	2	469+80	10 x 12	13.3	II	
19	2	468+53	110 x 12	146.67	IV	
22	2	464+79	9 x 12	12.0	II	
23	2	462+93	12 x 12	16.0	III	

**SCHEDULE TOTALS**

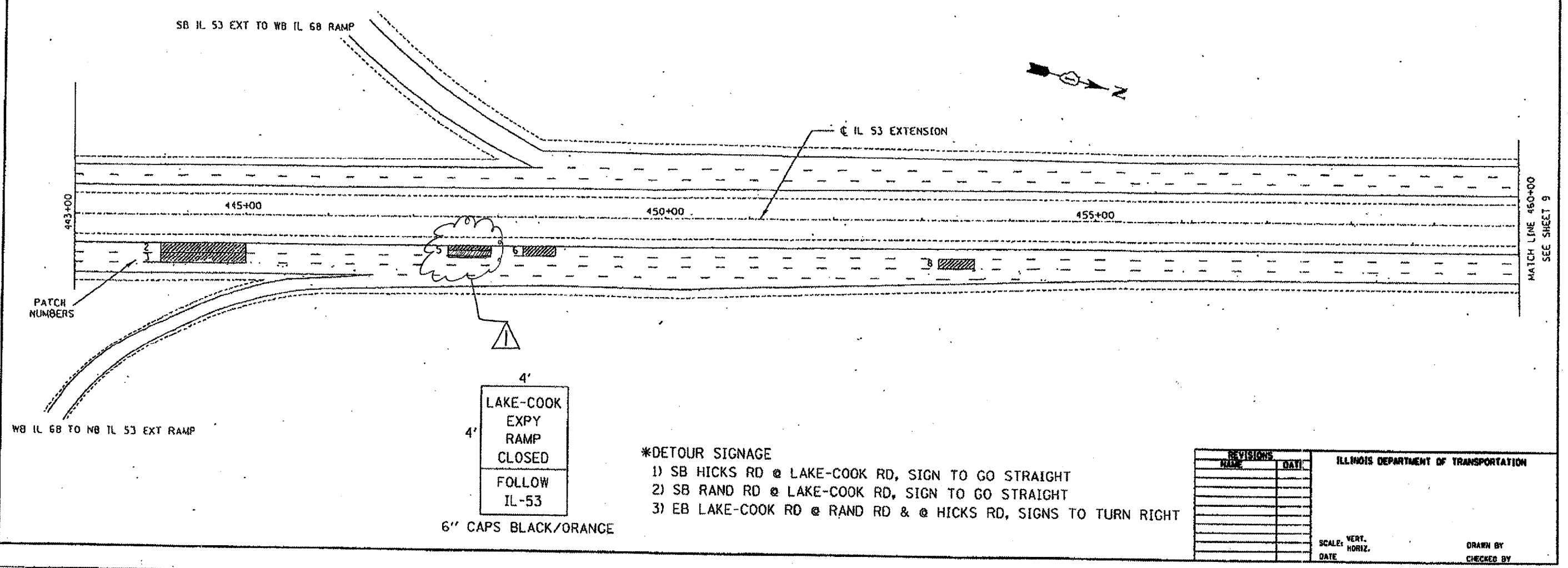
CLASS D PATCHES, TYPE II	265 SQ YD
CLASS D PATCHES, TYPE III	300 SQ YD
CLASS D PATCHES, TYPE IV	1860 SQ YD
SAW CUTS	2270 FT

ILLINOIS DEPARTMENT OF TRANSPORTATION  
  
**IL ROUTE 53 EXTENSION  
PAVEMENT PATCHING SCHEDULE  
2 OF 2**

CONTRACT NO. 62962			
F.A.P. RITE	SECTION	COUNTY	TOTAL SHEETS
542	530 CRC-PP	COOK	15
STA.	TO STA.		SHEET NO.
FED. ROAD DIST. NO.	ILLINOIS	FED. AID PROJECT	8

## STAGING NOTES

- SB STAGE I    CLOSE EB LAKE-COOK RD TO SB IL 53 EXT ENTRANCE RAMP & CLOSE RIGHT LANE OF WB LAKE-COOK RD TO SB IL 53 EXT RAMP (SEE NOTE 1 ON SHEET 10) BEFORE SB PATCH #1 IN ORDER TO PERFORM SB PATCHES (#1 THRU #9). DETOUR SIGNS \* SHALL BE SET UP AHEAD OF HICKS ROAD & RAND RD TO FOLLOW IL 53. (5 CALENDAR DAYS MAX., SIGNS SHALL BE APPROVED BY THE ENGINEER). THE COST OF TEMP DETOUR SIGNAGE (12 SIGNS) IS INCLUDED IN THE COST OF "TRAFFIC CONTROL & PROTECTION (EXPRESSWAY)."
- SB STAGE II    CLOSE SB IL 53 EXT LANES #2 & #3 AS SHOWN ON THE STAGING PLAN & PERFORM SB PATCHES (#10 THRU #23) (SEE DETAILS SHEET 10)
- NB STAGE I    CLOSE NB IL 53 EXT LANES #1 & #2 PER STATE STANDARDS 701400 & 701446 IN ORDER TO PATCH NB LANES (2, 3, 4, 5, 6, 8 & 12 THRU 34) AND CLOSE LANE 1 PER STANDARDS 701400 & 701401 TO PERFORM NB PATCHES (35, 38, 40, 41, 42, 44, 46).
- NB STAGE II    CLOSE LANE 1 PER STANDARDS 701400 & 401401 WITH CENTER LANE CLOSURE DETAIL (TC 25) TO PERFORM NB PATCHES (37, 39, 43, 45, 47). SEE DETAILS SHEET 9 & 10. KEEP IL 53 EXTENSION NB TO LAKE-COOK ROAD EB RAMP OPEN.



- \*DETOUR SIGNAGE**
- 1) SB HICKS RD @ LAKE-COOK RD, SIGN TO GO STRAIGHT
  - 2) SB RAND RD @ LAKE-COOK RD, SIGN TO GO STRAIGHT
  - 3) EB LAKE-COOK RD @ RAND RD & @ HICKS RD, SIGNS TO TURN RIGHT

REVISIONS	
NO.	DATE

ILLINOIS DEPARTMENT OF TRANSPORTATION

SCALE: VERT. \_\_\_\_\_ HORIZ. \_\_\_\_\_ DATE \_\_\_\_\_

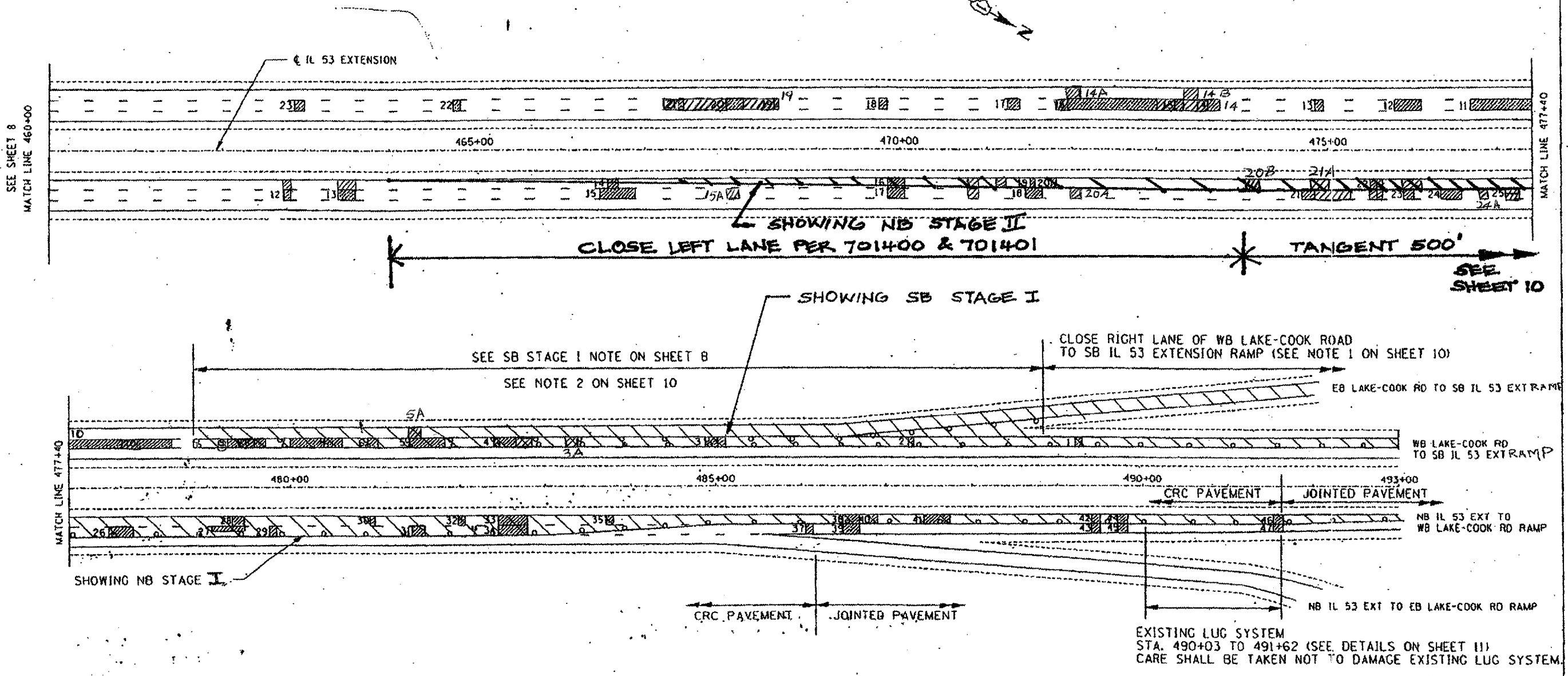
DRAWN BY \_\_\_\_\_ CHECKED BY \_\_\_\_\_

PLOT DATE: 12/12/06  
 FILE NAME: ...  
 PLOT SCALE: ...  
 PLOT SIZE: ...  
 PLOT ORIGIN: ...

AS Revised 12/26/06 FG

ROUTE	SECTION	COUNTY	TOTAL SHEETS	SHEET NUMBER
FAP 342	530 CRC-PP	COOK	15	9

CONTRACT 62962



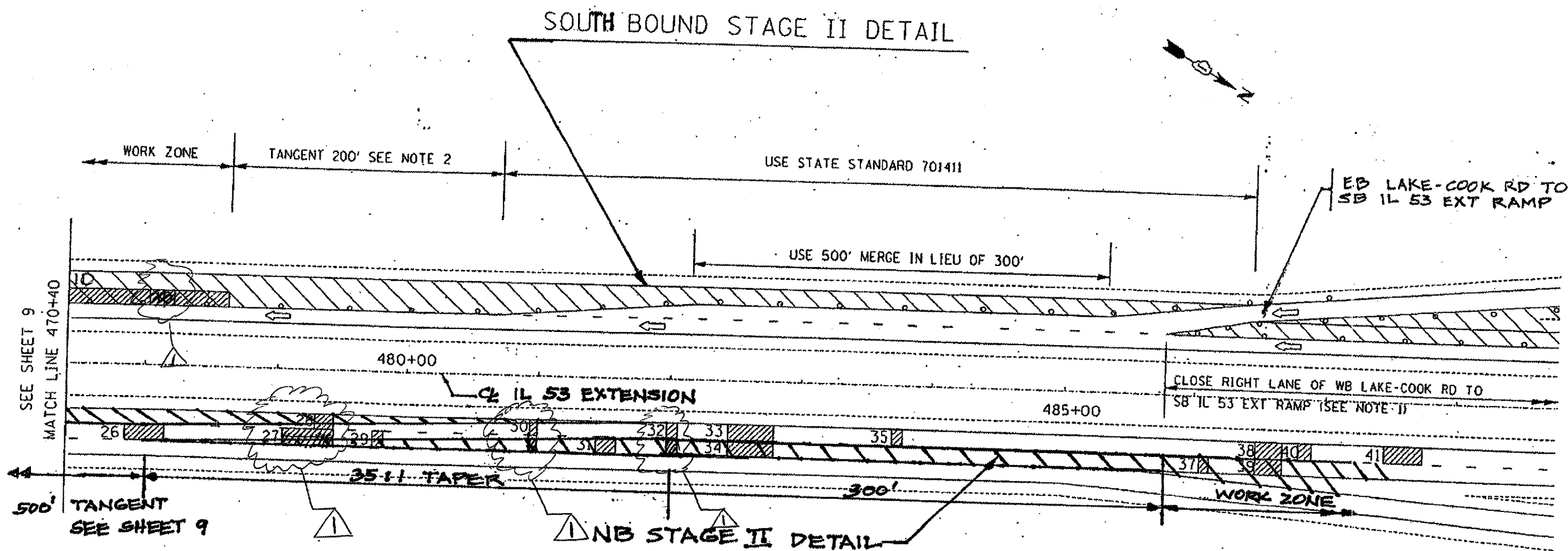
ILLINOIS DEPARTMENT OF  
TRANSPORTATION

TRAFFIC CONTROL DETAILS  
IL ROUTE 53 EXTENSION  
2 OF 3

REVISOR sheet 12/26/06 FB

ROUTE	SECTION	COUNTY	TOTAL SHEETS	SHEET NUMBER
FAP 342	530 CRC-PP	COOK	15	10

CONTRACT 62962



NOTE 1: USE TYPE II BARRICADES OR DRUMS WITH STEADY BURNING MONODIRECTIONAL LIGHTS @ 50' CTS TO PREVENT RIGHT LANE FROM DEVELOPING

NOTE 2: USE TYPE II BARRICADES, DRUMS OR VERTICAL BARRICADES WITH STEADY BURNING MONODIRECTIONAL LIGHTS @ 50' CTS

ILLINOIS DEPARTMENT OF TRANSPORTATION  
**STAGE II**  
 TRAFFIC CONTROL DETAILS  
 IL ROUTE 53 EXTENSION  
 3 OF 3

▲ NO DEVICES - 11-1-11