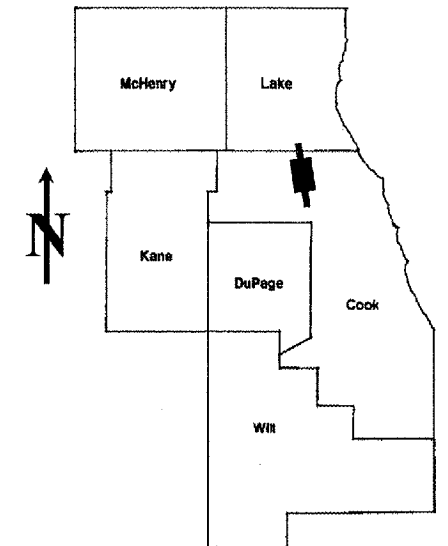


ROUTE	SECTION	COUNTY	TOTAL SHEETS	SHEET NUMBER
FAP 342	530CRC-PP	COOK	15	1

STATE OF ILLINOIS
DEPARTMENT OF TRANSPORTATION
DIVISION OF HIGHWAYS
DISTRICT ONE
PROPOSED HIGHWAY PLANS

CONTRACT NO. 62962

D-91-215-05



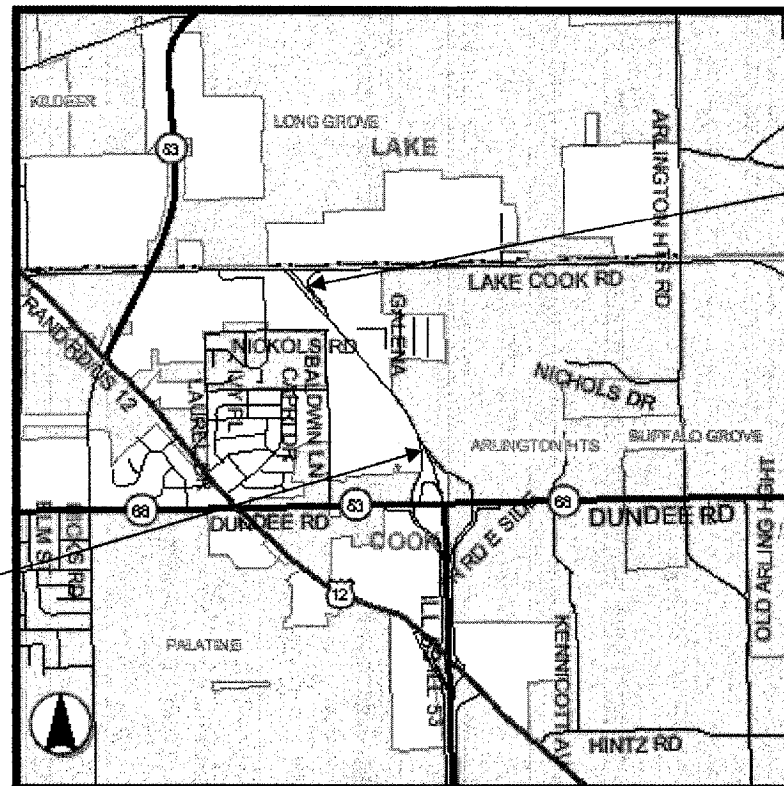
LOCATION OF IMPROVEMENT INDICATED THUS:

FOR INDEX OF SHEETS SEE SHEET 2

IMPROVEMENT LOCATED IN THE VILLAGE OF ARLINGTON HEIGHTS

FAP 342: IL 53 EXTENSION
 IL RTE. 68(DUNDEE RD.) TO LAKE-COOK RD
 SECTION: 530CRC-PP
 HMA CLASS D PATCHING OF CRC PAVEMENT
 COOK COUNTY
 C-91-215-05

R10E



**IMPROVEMENT ENDS:
STA. 492+00**

**IMPROVEMENT BEGINS:
STA. 443+00**

TRAFFIC DATA

SPEED LIMIT = 55 MPH
2003 ADT = 71,300

CONTRACT NO. 62962

GROSS LENGTH OF IMPROVEMENT = 4,900 FT = 0.93 MILES
 NET LENGTH OF IMPROVEMENT = 4,900 FT = 0.93 MILES

STATE OF ILLINOIS
DEPARTMENT OF TRANSPORTATION
DIVISION OF HIGHWAYS
 SUBMITTED: Nov. 1 2006
Diane O'Keefe
 DEPUTY DIRECTOR OF HIGHWAYS, REGION ENGINEER
December 8 2006
Eric E. Hamm
 INTERIM ENGINEER OF DESIGN AND ENVIRONMENT
December 8, 2006
Milton R. Sees
 DIRECTOR, DIVISION OF HIGHWAYS

PRINTED BY THE AUTHORITY OF THE STATE OF ILLINOIS

J.U.L.I.E.: JOINT UTILITY LOCATION INFORMATION FOR EXCAVATION
(800)892-0123

DISTRICT ONE - DESIGN - PLAN PREPARATION ENGINEER:
KEN ENG / ROBERT BORO (847) 705-4178

ROUTE	SECTION	COUNTY	TOTAL SHEETS	SHEET NUMBER
FAP 342	530CRC-PP	COOK	15	2

CONTRACT 62962

INDEX OF SHEETS

STATE STANDARDS

<u>SHEET NO.</u>	<u>DESCRIPTION</u>		
1	TITLE SHEET	442201-02	CLASS D PATCHES
2	INDEX OF SHEETS, STATE STANDARDS	701400-02	APPROACH TO LANE CLOSURE, FREEWAY / EXPRESSWAY
3	GENERAL NOTES	701401-03	LANE CLOSURE, FREEWAY / EXPRESSWAY
4	SUMMARY OF QUANTITIES	701411-03	LANE CLOSURE, MULTILANE, AT ENTRANCE OR EXIT RAMP, FOR SPEEDS \geq 45 MPH
5	TYPICAL SECTION	701446	TWO LANE CLOSURE, FREEWAY / EXPRESSWAY
6 - 7	PAVEMENT PATCHING SCHEDULE	702001-06	TRAFFIC CONTROL DEVICES
8 - 10	TRAFFIC CONTROL PLAN		
11	FREEWAY ENTRANCE AND EXIT RAMP CLOSURE DETAILS		
12	TRAFFIC CONTROL DETAILS FOR FREEWAY <i>CENTER LANE CLOSURE</i> <i>& SHOULDER LANE</i>		
13 - 14	MULTI-LANE FREEWAY PAVEMENT MARKING DETAILS		
15	TRAFFIC CONTROL DETAILS FOR FREEWAY SHOULDER CLOSURES & PARTIAL RAMP CLOSURES		

ILLINOIS DEPARTMENT OF TRANSPORTATION

**INDEX OF SHEETS
STATE STANDARDS**

Rev.

ROUTE	SECTION	COUNTY	TOTAL SHEETS	SHEET NUMBER
FAP 342	530CRC-PP	COOK	15	3

CONTRACT 62962

GENERAL NOTES

BEFORE STARTING ANY EXCAVATION, THE CONTRACTOR SHALL CALL "J.U.L.I.E." AT (800) 892-0123 FOR FIELD LOCATIONS OF BURIED ELECTRIC, TELEPHONE AND GAS UTILITIES. (48 HOUR NOTIFICATION IS REQUIRED).

THE CONTRACTOR SHALL COORDINATE CONSTRUCTION ACTIVITIES WITH UTILITY COMPANIES.

THE CONTRACTOR WILL NOT BE ALLOWED TO SET UP A YARD OR FIELD OFFICE ON STATE PROPERTY WITHOUT WRITTEN PERMISSION FROM THE DEPARTMENT.

WHEN ARTIFICIAL LIGHTING IS UTILIZED IN NIGHT OPERATIONS, THE CONTRACTOR SHALL EXERCISE THE UTMOST PRECAUTIONS IN PREVENTING ADVERSE VISIBILITY TO THE MOTORING PUBLIC AND ADJOINING RESIDENTIAL AREAS.

BEFORE BEGINNING ANY WORK, THE CONTRACTOR SHALL RETAIN AND RECORD FOR FUTURE REFERENCES ALL EXISTING PAVEMENT MARKING LINES AND RAISED REFLECTIVE PAVEMENT MARKERS IN ORDER THAT THESE LOCATIONS CAN BE RE-ESTABLISHED FOR STRIPING. EXACT LOCATION OF ALL PAVEMENT MARKINGS SHALL BE AS DIRECTED BY THE ENGINEER.

IT SHALL BE THE CONTRACTOR'S RESPONSIBILITY TO VERIFY ALL DIMENSIONS AND CONDITIONS EXISTING IN THE FIELD PRIOR TO CONSTRUCTION AND ORDERING OF MATERIALS.

THE CONTRACTOR SHALL CONTACT THE DISTRICT ONE TRAFFIC CONTROL SUPERVISOR AT (847) 705-4151 A MINIMUM OF 72 HOURS IN ADVANCE OF BEGINNING WORK.

THE ENGINEER SHALL CONTACT *DEBBIE HANLON* AREA TRAFFIC FIELD *TECHNICIAN* AT *(847) 438-2300* TWO (2) WEEKS PRIOR TO THE PLACEMENT OF PERMANENT PAVEMENT MARKING.

ALL DAMAGE TO EXISTING PAVEMENT MARKINGS OR RAISED REFLECTIVE PAVEMENT MARKERS OUTSIDE THE REMOVAL LINE SHOWN ON THE PLANS SHALL BE REPLACED AT THE CONTRACTOR'S EXPENSE.

THESE PLANS HAVE BEEN PREPARED FROM NOTES RECEIVED FROM THE BUREAU OF MAINTENANCE.

THE ENGINEER SHALL OBTAIN APPROVAL FROM THE DISTRICT ONE BUREAU CHIEF OF MAINTENANCE FOR ANY PROPOSED REVISIONS IN THE SCHEDULED PAVEMENT PATCHING LOCATIONS.

DO NOT SCALE PLANS FOR CONSTRUCTION DIMENSIONS.

NO PATCHING WORKS SHALL BE DONE AT LOCATIONS WHERE INDUCTIVE LOOP DETECTORS ARE LOCATED. ALL DAMAGE TO EXISTING LOOPS OR LUG SYSTEM SHOWN ON SHEET 9 SHALL BE REPLACED AT THE CONTRACTOR'S EXPENSE.

ALL EXISTING LANE LINE PAVEMENT MARKINGS REMOVED BY PATCHING OPERATIONS SHALL BE REPLACED IN WHOLE EVEN IF OPERATION REMOVES ONLY PART OF THE LANE LINE PAVEMENT MARKING.

THE CONTRACTOR SHALL BE RESPONSIBLE FOR THE NOTIFICATION OF ALL EMERGENCY SERVICES, SCHOOL DISTRICTS, I.D.O.T.'S COMMUNICATIONS CENTER, SPRINGFIELD TRUCK PERMIT SECTION AND OTHER AGENCIES AFFECTED BY THE CLOSURE. THE CONTRACTOR SHALL ALSO BE RESPONSIBLE FOR POSTING SIGNS THAT WILL INDICATE THE DATES THE CLOSURE WILL BE IN PLACE.

THE CONTRACTOR SHALL TAKE PRECAUTIONS NOT TO DAMAGE THE UNDERLYING OPEN GRADED LAYER. BEFORE PATCHING AN AREA, THE CONTRACTOR SHALL PLACE "GEOTECHNICAL FABRIC FOR GROUND STABILIZATION", OF THE SAME DIMENSIONS AS THE PATCH, BETWEEN THE PATCH AND THE OPEN GRADED LAYER ACCORDING TO SECTION 210 OF THE STANDARD SPECIFICATIONS. THE COST OF THIS FABRIC AND ITS PLACEMENT IS INCLUDED IN THE COST OF THE PATCH.

MIXTURE REQUIREMENTS

CLASS D PATCH ALL TYPES	MIXTURE TYPE	AC/PG TYPE	AIR VOIDS (%)
TOP 2"	POLYMERIZED HMA SURFACE COURSE, IL-9.5mm, N90, MIX F, 2"	SBS/SBR PG 70-22	4% @ 90 GYR
BOTTOM 7-1/2"	POLYMERIZED HMA BINDER COURSE, IL-19, N90, 7-1/2"	SBS/SBR PG 70-22	4% @ 90 GYR

ILLINOIS DEPARTMENT OF TRANSPORTATION

GENERAL NOTES

Rev.

5	ROUTE	SECTION	COUNTY	TOTAL SHEETS	SHEET NUMBER
	FAP 342	530CRC-PP	COOK	15	4

CONTRACT 62962

SUMMARY OF QUANTITIES

*URBAN
100% STATE*

CODE NUMBER	DESCRIPTION	UNIT	CONSTRUCTION TYPE CODE 1000 TOTAL QUANTITY
X4420092	CLASS D PATCHES, TYPE II, 9 1/2"	SQ YD	225
X4420093	CLASS D PATCHES, TYPE III, 9 1/2"	SQ YD	285
X4420099	CLASS D PATCHES, TYPE IV, 9 1/2"	SQ YD	1470
67000400	ENGINEER'S FIELD OFFICE, TYPE A	CAL MO	3
67100100	MOBILIZATION	L SUM	1
70106800	CHANGEABLE MESSAGE SIGN	CAL MO	3
X7011015	TRAFFIC CONTROL AND PROTECTION (EXPRESSWAYS)	L SUM	1
*78008210	POLYUREA PAVEMENT MARKING TYPE I - LINE 4"	FOOT	1200
*78008220	POLYUREA PAVEMENT MARKING TYPE I - LINE 5"	FOOT	1040
*78008240	POLYUREA PAVEMENT MARKING TYPE I - LINE 8"	FOOT	420
*78100100	RAISED REFLECTIVE PAVEMENT MARKER	EACH	120

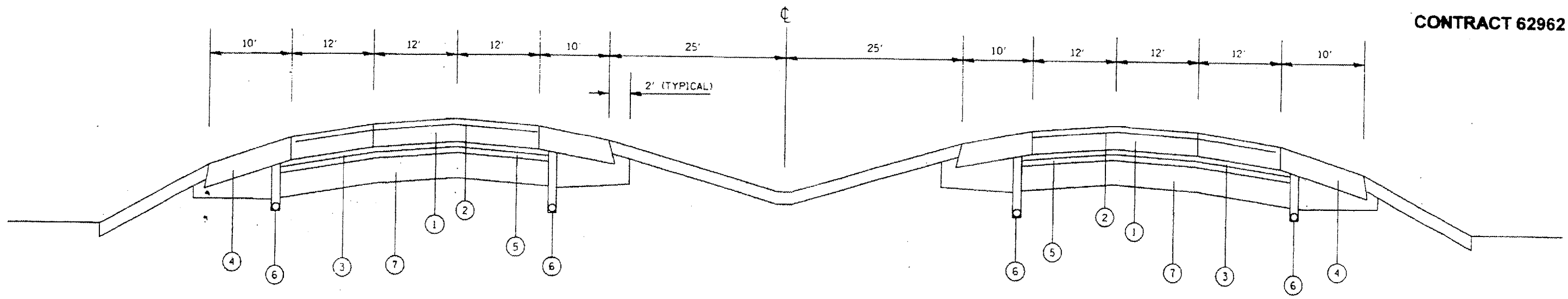
* SPECIALTY ITEMS

ILLINOIS DEPARTMENT OF TRANSPORTATION
IL RTE. 53 EXTENSION
SUMMARY OF QUANTITIES

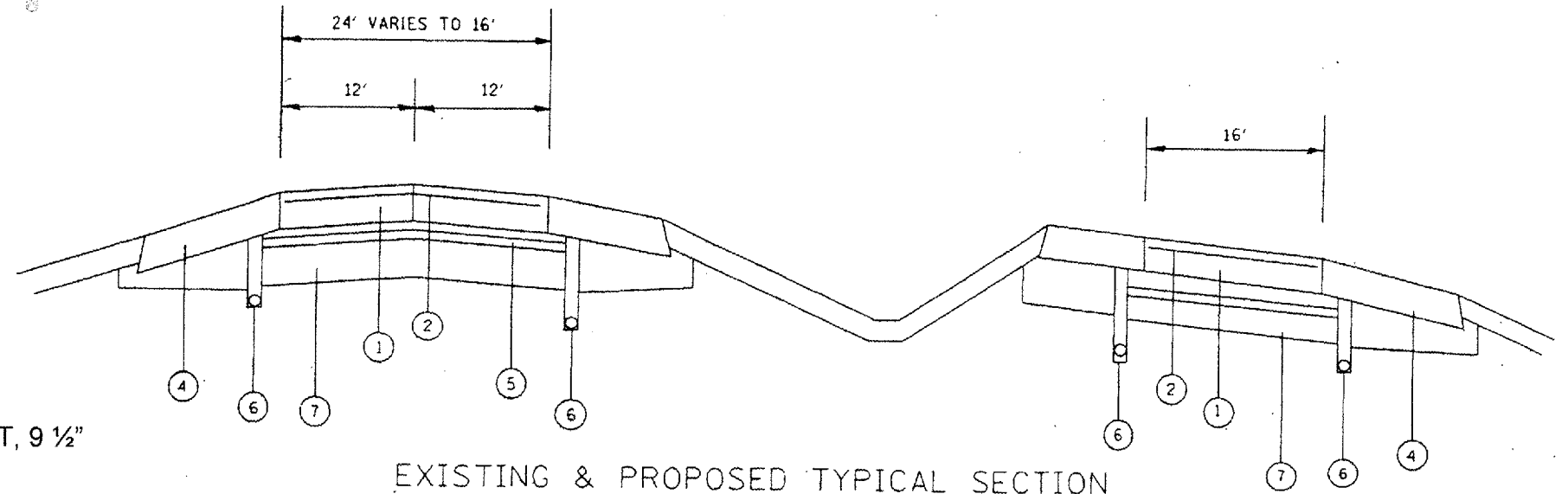
Rev.

ROUTE FAP 342	SECTION 530CRC-PP	COUNTY COOK	TOTAL SHEETS 15	SHEET NUMBER 5
------------------	----------------------	----------------	--------------------	-------------------

CONTRACT 62962



EXISTING & PROPOSED TYPICAL SECTION
IL RTE 53 EXTENSION



EXISTING & PROPOSED TYPICAL SECTION
IL RTE 53 EXTENSION
@ LAKE-COOK ROAD EXIT

LEGEND

1. CONTINUOUSLY REINFORCED P.C. CONCRETE PAVEMENT, 9 1/2" ON GEOTECHNICAL FABRIC
2. PAVEMENT REINFORCEMENT (EXIST.)
3. OPEN GRADED BITUMINOUS AGGREGATE MIXTURE
4. HMA SHOULDER
5. SUB-BASE GRANULAR MATERIAL
6. PIPE UNDERDRAIN
7. POROUS GRANULAR EMBANKMENT

ILLINOIS DEPARTMENT OF
TRANSPORTATION

IL RTE 53 EXTENSION
TYPICAL SECTION

Rev.

ROUTE	SECTION	COUNTY	TOTAL SHEETS	SHEET NUMBER
FAP 342	530CRC-PP	COOK	15	6

CONTRACT 62962

NORTHBOUND IL RTE. 53 EXTENSION

PATCH LOCATION NUMBER	STATION	LANE	Northbound		
			SIZE (L X W)	AREA (SQ. YD.)	TYPE
1	445+17				
2	444+50	1	100 x 12	133.3	IV
3	444+50	2	100 x 12	133.3	IV
4					
5	447+67	1	50 x 6	33.3	IV
6	448+50	1	40 x 12	53.3	IV
7					
8	453+40	2	40 x 12	53.3	IV
9					
10					
11					
12	462+79	2	8 x 12	10.7	II
12A					
13	463+50	2	20 x 12	26.7	IV
14	466+61	1	12 x 12	16.0	III
15	466+67	2	42 x 12	56.0	IV
16	469+95	1	20 x 12	26.7	IV
17	469+95	2	20 x 12	26.7	IV
18	471+55	2	20 x 12	26.7	IV
19	471+53	1	6 x 12	8.0	II
20	471+78	1	6 x 12	8.0	II
21	474+77	2	15 x 12	20.0	III
22	475+54	1	8 x 12	10.7	II
23	475+96	2	12 x 12	16.0	III
24	476+47	2	25 x 12	33.3	IV
25	477+17	2	15 x 6	10.0	II

PATCH LOCATION NUMBER	STATION	LANE	Northbound		
			SIZE (L X W)	AREA (SQ. YD.)	TYPE
26	478+00	2	30 x 12	40.0	IV
27	479+25	2	40 x 6	26.7	IV
28	479+37	1	15 x 12	20.0	III
29	479+79	2	8 x 12	10.7	II
30	480+97	1	6 x 12	8.0	II
31	481+52	2	15 x 12	20.0	III
32	482+02	1	8 x 12	10.7	II
33	482+62	1	35 x 12	46.7	IV
34	482+62	2	35 x 12	46.7	IV
35	483+74	1	8 x 12	10.7	II
36					
37	486+09	2	8 x 12	10.7	II
38	486+58	1	20 x 12	26.7	IV
39	486+58	2	20 x 12	26.7	IV
40	486+85	1	10 x 12	13.3	II
41	487+60	1	30 x 12	40.0	IV
42	489+45	1	10 x 12	13.3	II
43	489+45	2	10 x 12	13.3	II
44	489+76	1	12 x 12	16.0	III
45	489+76	2	12 x 12	16.0	III
46	491+59	1/Ramp*	12 x 12	16.0	II
47	491+60	2/Ramp*	12 x 12	16.0	II

- CENTER LINE OF IL RTE. 68 (DUNDEE) : STA. 435+44
- ALL STATIONINGS ARE CENTER OF EACH PATCHING LOCATIONS.

ILLINOIS DEPARTMENT OF TRANSPORTATION

**IL ROUTE 53 EXTENSION
PAVEMENT PATCHING SCHEDULE
1 OF 2**

ROUTE	SECTION	COUNTY	TOTAL SHEETS	SHEET NUMBER
FAP 342	530CRC-PP	COOK	15	7

CONTRACT 62962

SOUTHBOUND IL RTE. 53 EXTENSION

PATCH LOCATION NUMBER	LANE	STATION	Southbound			TYPE	
			SIZE (L X W)		AREA (SQ. YD.)		
1	2	489+25	8	x	12	10.7	II
2	2	487+30	6	x	12	8.0	II
3	2	484+96	14	x	12	18.7	III
4	2	482+53	26	x	12	34.7	IV
5	2	481+62	40	x	12	53.3	IV
6	2	480+98	12	x	12	16.0	III
7	2	480+31	62	x	12	82.7	IV
8	2	479+64	14	x	12	18.7	III
9	2	479+31	14	x	12	18.7	III
10	2	478+40	40	x	12	53.3	IV
11	2	477+36	132	x	12	176.0	IV
12	2	475+95	32	x	12	42.7	IV
13	2	474+95	10	x	12	13.3	II
14	2	473+67	14	x	12	18.7	III
15	2	473+26	10	x	12	13.3	II
16	2	472+48	106	x	12	141.3	IV
17	2	471+31	14	x	12	18.7	III
18	2	469+80	10	x	12	13.3	II
19	2	468+53	6	x	12	8.0	II
20	2	468+04	20	x	12	26.7	IV
21	2	467+43	6	x	12	8.0	II
22	2	464+79	9	x	12	12.0	II
23	2	462+93	12	x	12	16.0	III

SCHEDULE TOTALS

CLASS D PATCHES, TYPE II	225 SQ YD
CLASS D PATCHES, TYPE III	285 SQ YD
CLASS D PATCHES, TYPE IV	1470 SQ YD
SAW CUTS	2270 FT

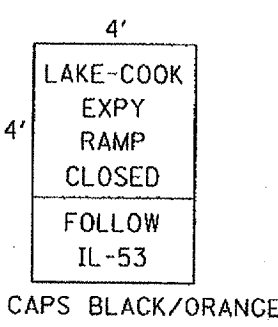
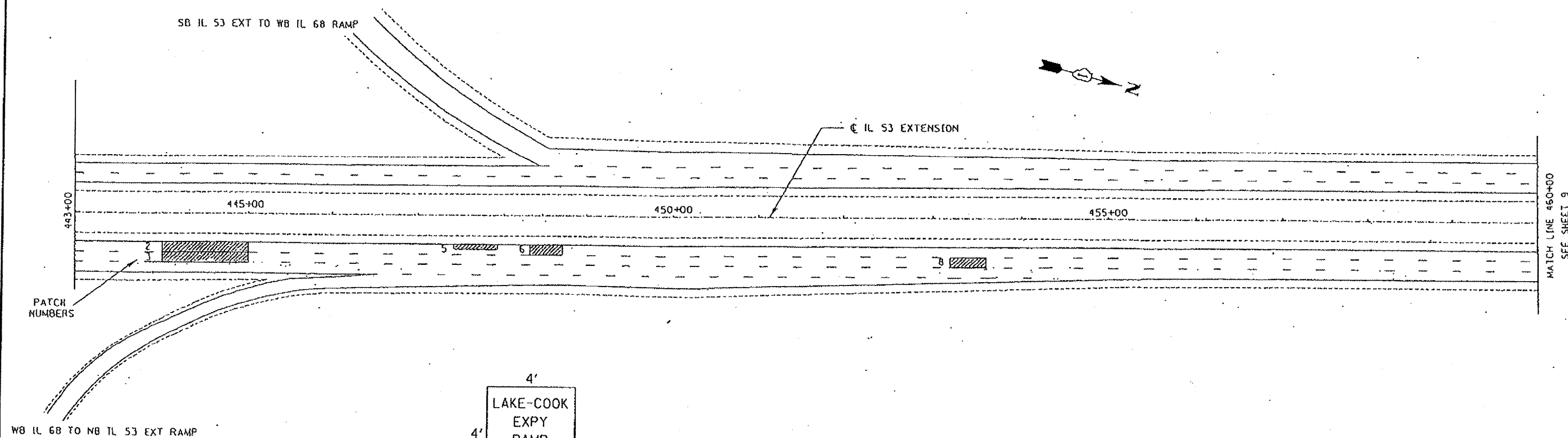
ILLINOIS DEPARTMENT OF TRANSPORTATION

**IL ROUTE 53 EXTENSION
PAVEMENT PATCHING SCHEDULE
2 OF 2**

F.A.P. RTE.	SECTION	COUNTY	TOTAL SHEETS	SHEET NO.
342	530 CRC-PP	COOK	15	8
STA.		TO STA.		
FED. ROAD DIST. NO.		ILLINOIS FED. AID PROJECT		

STAGING NOTES

- SB STAGE I CLOSE EB LAKE-COOK RD TO SB IL 53 EXT ENTRANCE RAMP & CLOSE RIGHT LANE OF WB LAKE-COOK RD TO SB IL 53 EXT RAMP (SEE NOTE 1 ON SHEET 10) BEFORE SB PATCH #1 IN ORDER TO PERFORM SB PATCHES (#1 THRU #9). DETOUR SIGNS * SHALL BE SET UP AHEAD OF HICKS ROAD & RAND RD TO FOLLOW IL 53. (5 CALENDAR DAYS MAX., SIGNS SHALL BE APPROVED BY THE ENGINEER). THE COST OF TEMP DETOUR SIGNAGE (12 SIGNS) IS INCLUDED IN THE COST OF "TRAFFIC CONTROL & PROTECTION (EXPRESSWAY)."
- SB STAGE II CLOSE SB IL 53 EXT LANES #2 & #3 AS SHOWN ON THE STAGING PLAN & PERFORM SB PATCHES (#10 THRU #23) (SEE DETAILS SHEET 10)
- NB STAGE I CLOSE NB IL 53 EXT LANES #1 & #2 PER STATE STANDARDS 701400 & 701446 IN ORDER TO PATCH NB LANES (2, 3, 4, 5, 6, 8 & 12 THRU 34) AND CLOSE LANE 1 PER STANDARDS 701400 & 701401 TO PERFORM NB PATCHES (35, 38, 40, 41, 42, 44, 46).
- NB STAGE II CLOSE LANE 1 PER STANDARDS 701400 & 401401 WITH CENTER LANE CLOSURE DETAIL (TC 25) TO PERFORM NB PATCHES (37, 39, 43, 45, 47). SEE DETAILS SHEET 9 & 10. KEEP IL 53 EXTENSION NB TO LAKE-COOK ROAD EB RAMP OPEN.



- *DETOUR SIGNAGE
- 1) SB HICKS RD @ LAKE-COOK RD, SIGN TO GO STRAIGHT
 - 2) SB RAND RD @ LAKE-COOK RD, SIGN TO GO STRAIGHT
 - 3) EB LAKE-COOK RD @ RAND RD & @ HICKS RD, SIGNS TO TURN RIGHT

REVISIONS	
NAME	DATE

ILLINOIS DEPARTMENT OF TRANSPORTATION

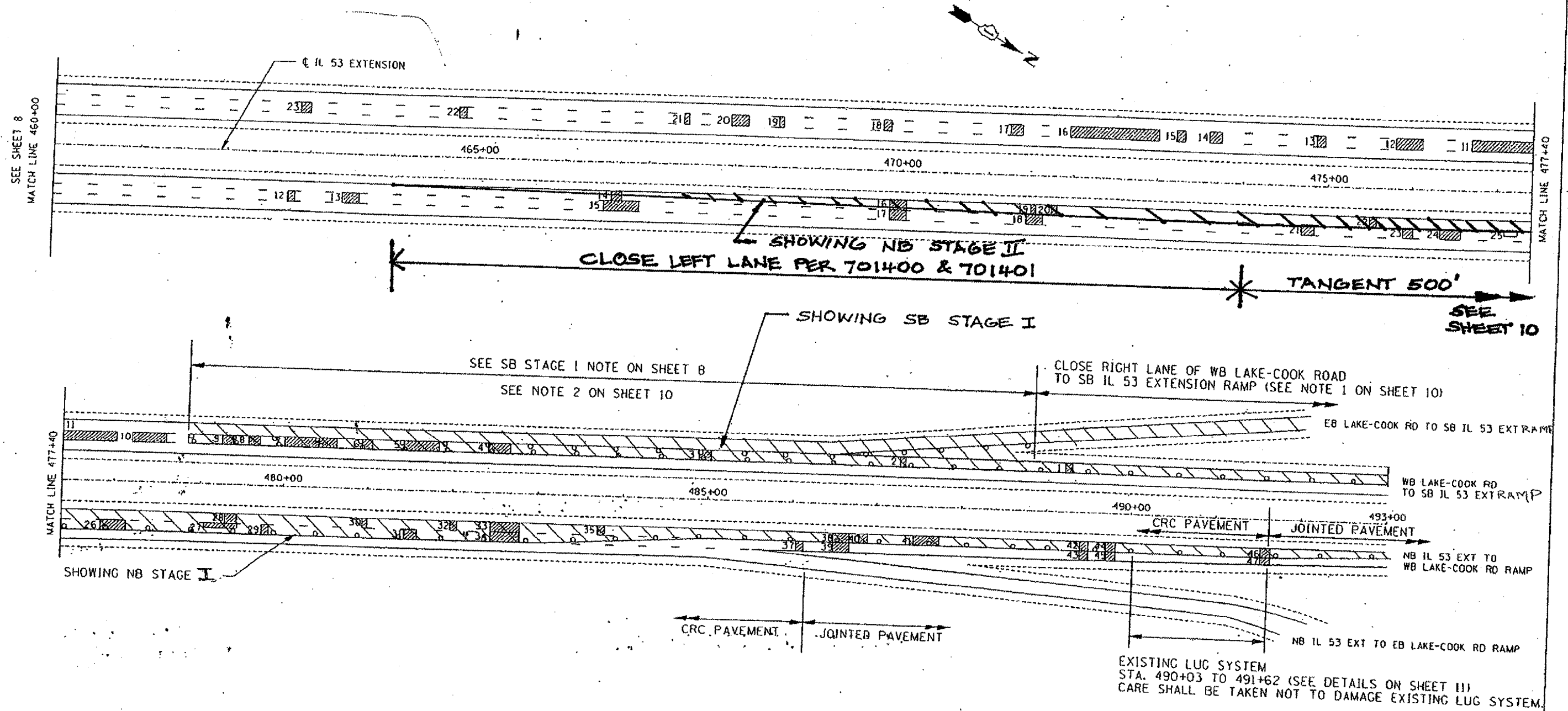
SCALE: VERT. _____ HORIZ. _____ DATE _____

DRAWN BY _____ CHECKED BY _____

PLOT DATE: 12/12/2006
 FILE NAME: I:\Projects\62962\Drawings\62962-PP-08.dwg
 PLOT SCALE: 1/8" = 1'-0"
 PLOT NAME: 62962-PP-08.dwg

ROUTE FAP 342	SECTION 530 CRC-PP	COUNTY COOK	TOTAL SHEETS 15	SHEET NUMBER 9
------------------	-----------------------	----------------	--------------------	-------------------

CONTRACT 62962

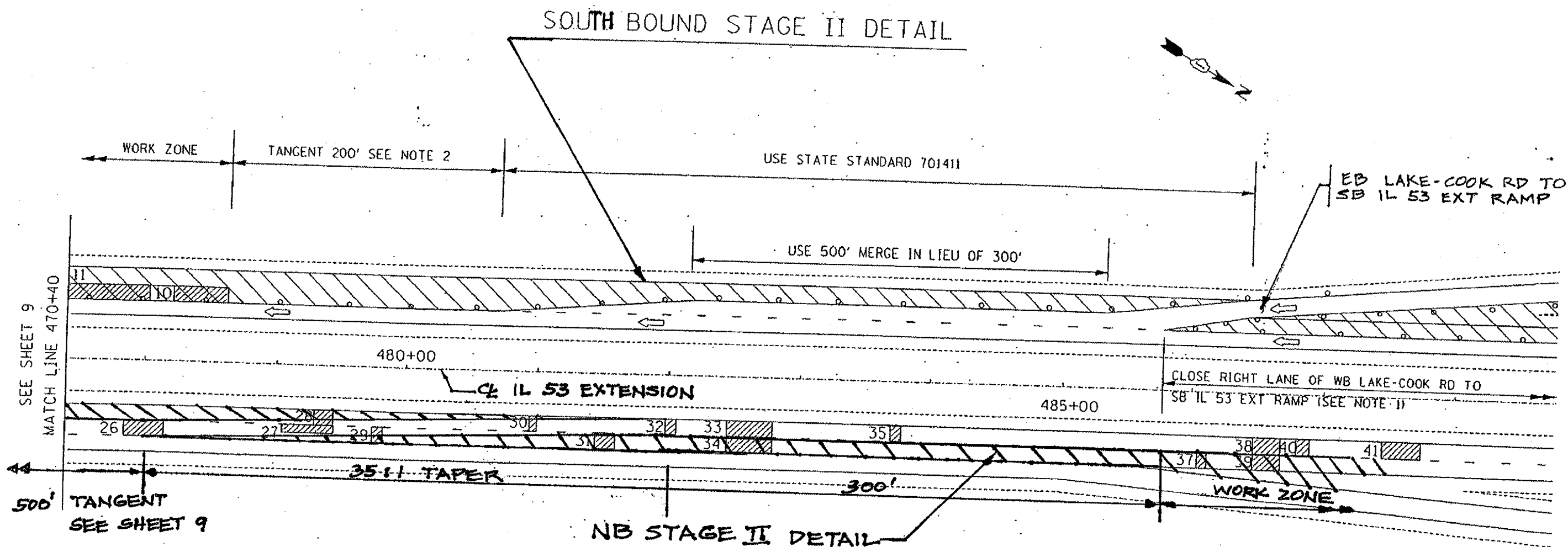


ILLINOIS DEPARTMENT OF
TRANSPORTATION

TRAFFIC CONTROL DETAILS
IL ROUTE 53 EXTENSION
2 OF 3

ROUTE	SECTION	COUNTY	TOTAL SHEETS	SHEET NUMBER
FAP 342	530 CRC-PP	COOK	15	10

CONTRACT 62962

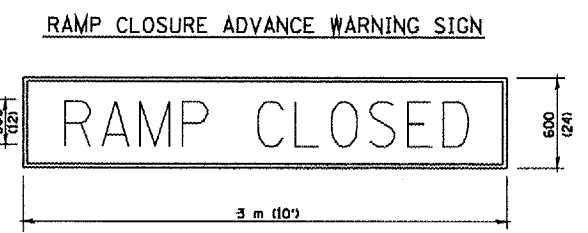
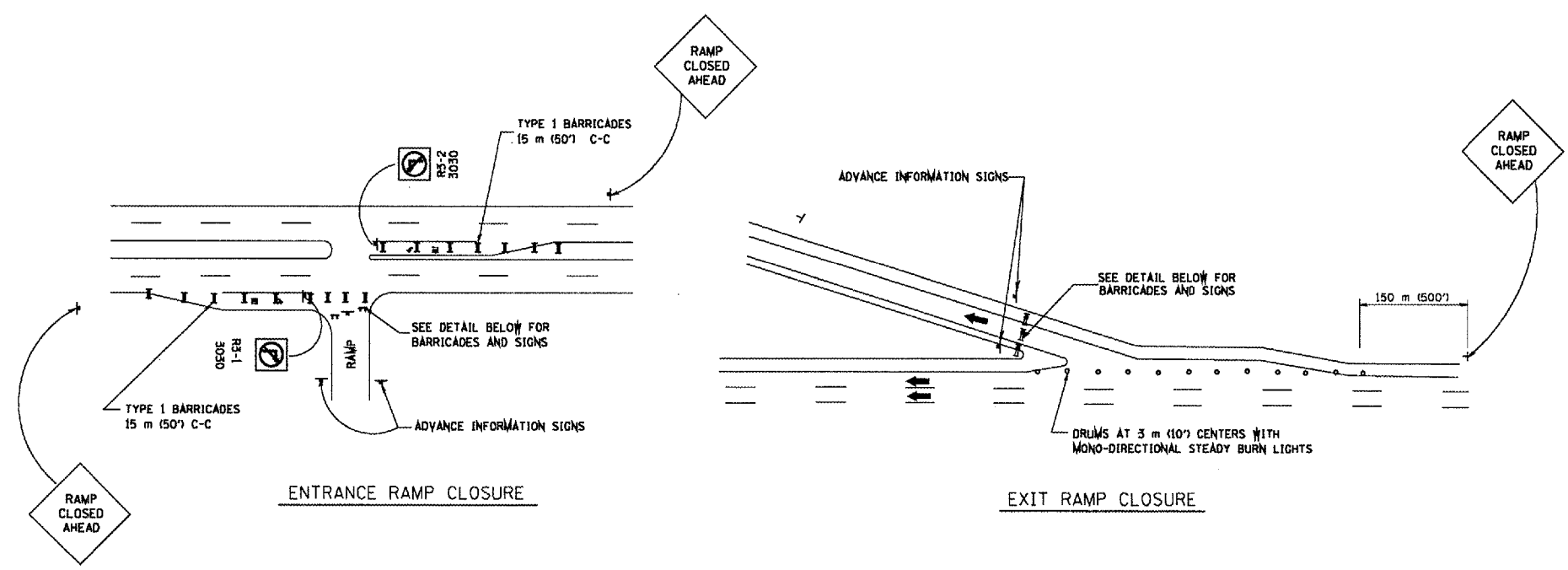


NOTE 1: USE TYPE II BARRICADES OR DRUMS WITH STEADY BURNING MONODIRECTIONAL LIGHTS @ 50' CTS - TO PREVENT RIGHT LANE FROM DEVELOPING

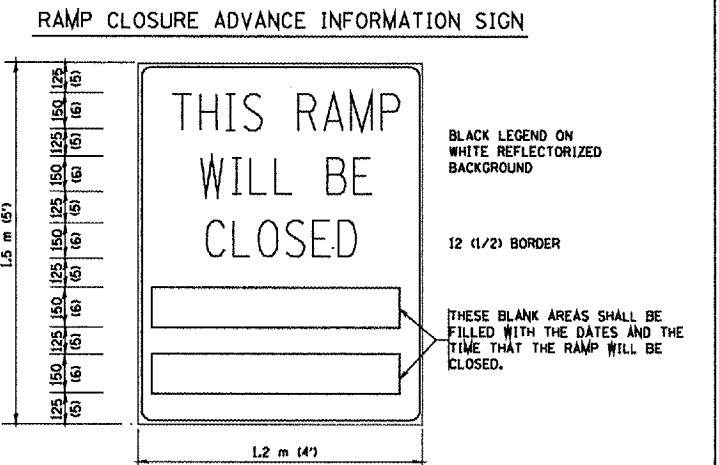
NOTE 2: USE TYPE II BARRICADES, DRUMS OR VERTICAL BARRICADES WITH STEADY BURNING MONODIRECTIONAL LIGHTS @ 50' CTS

ILLINOIS DEPARTMENT OF TRANSPORTATION
STAGE II
 TRAFFIC CONTROL DETAILS
 IL ROUTE 53 EXTENSION
 3 OF 3

F.A.P. RTE.	SECTION	COUNTY	TOTAL SHEETS	SHEET NO.
342	5302R-PP	COOK	15	11
STA.		TO STA.		
FED. ROAD DIST. NO.	ILLINOIS	FED. AID PROJECT		

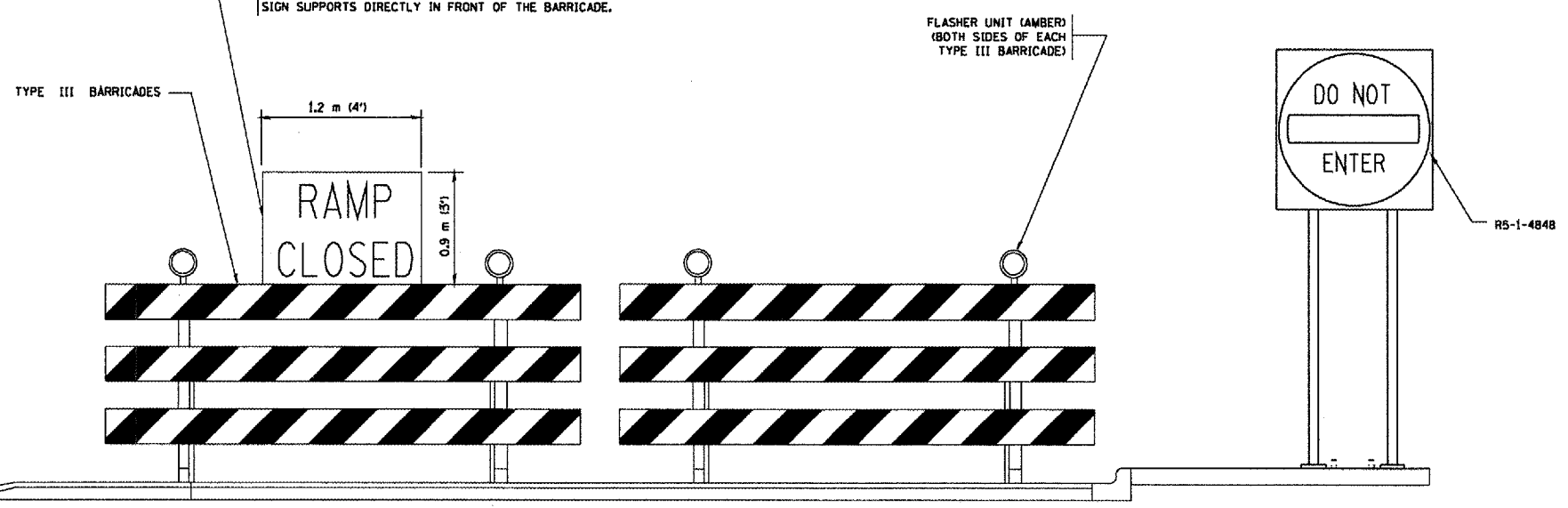


BLACK LEGEND ON ORANGE REFLECTORIZED BACKGROUND
25 (1) BORDER
THESE SIGNS ARE REQUIRED ON ALL THE EXIT GUIDE SIGNS FOR THE CLOSED EXIT RAMPS.



BLACK LEGEND ON WHITE REFLECTORIZED BACKGROUND
12 (1/2) BORDER
THESE BLANK AREAS SHALL BE FILLED WITH THE DATES AND THE TIME THAT THE RAMP WILL BE CLOSED.
THESE SIGNS ARE REQUIRED ON BOTH SIDES OF THE RAMP, MINIMUM OF 1 WEEK IN ADVANCE OF THE CLOSURE.

THE "RAMP CLOSED" SIGN SHALL BE B/W WITH 200 (8) CAPS. IF A TYPE III BARRICADE WITH AN ATTACHED SIGN PANEL WHICH MEETS NCHRP 350 IS NOT AVAILABLE, THE SIGNS MAY BE MOUNTED ON NCHRP 350 TEMPORARY SIGN SUPPORTS DIRECTLY IN FRONT OF THE BARRICADE.



DETAIL FOR REQUIRED BARRICADES & SIGNS

- GENERAL NOTES:
- CONES MAY BE SUBSTITUTED FOR DRUMS OR TYPE II BARRICADES DURING DAY OPERATIONS. CONES SHALL BE A MINIMUM OF TOO (28) HIGH.
 - STEADY BURN LIGHTS WILL NOT BE REQUIRED FOR DAY OPERATIONS.
 - A FLAGGER SHALL BE POSITIONED AT EACH CLOSED RAMP THAT IS OPEN TO CONSTRUCTION VEHICLES.
 - FOR DAYTIME RAMP CLOSURES, LASTING 6 HOURS OR LESS, THE CONTRACTOR MAY ELIMINATE THE ADVANCE WARNING SIGNS ON THE EXIT GUIDE SIGNS.
 - ALL ROUTE MARKERS AND TRAILBLAZER ASSEMBLIES WHICH DIRECT MOTORISTS TO A CLOSED ENTRANCE RAMP SHALL BE COVERED.
 - THE SIGNING AND BARRICADING WHICH IS REQUIRED BY THIS DETAIL SHALL BE CONSIDERED INCIDENTAL TO TRAFFIC CONTROL AND PROTECTION.
 - AUTHORIZATION FROM THE DISTRICT'S BUREAU OF TRAFFIC IS REQUIRED FOR ALL RAMP CLOSURES.
 - THE RAMP CLOSURE ADVANCE INFORMATION SIGNS SHALL BE ERECTED IF THE CLOSURE TIME EXCEEDS TWENTY-FOUR (24) HOURS. ADDITIONAL ADVANCE WARNING SIGNS ON EXIT GUIDE SIGNING WILL BE REQUIRED FOR EXIT RAMP CLOSURES THAT EXCEED TWENTY FOUR (24) HOURS IN LENGTH.

ALL DIMENSIONS ARE IN MILLIMETERS (INCHES) UNLESS OTHERWISE SHOWN.

REVISIONS	
NAME	DATE
DWS	2-83
DWS	1/90
DWS	9/94
DWS	12/94
DWS/JAF	12/02
JAF	2/06
Revise devices to meet NCHRP 350	4/03

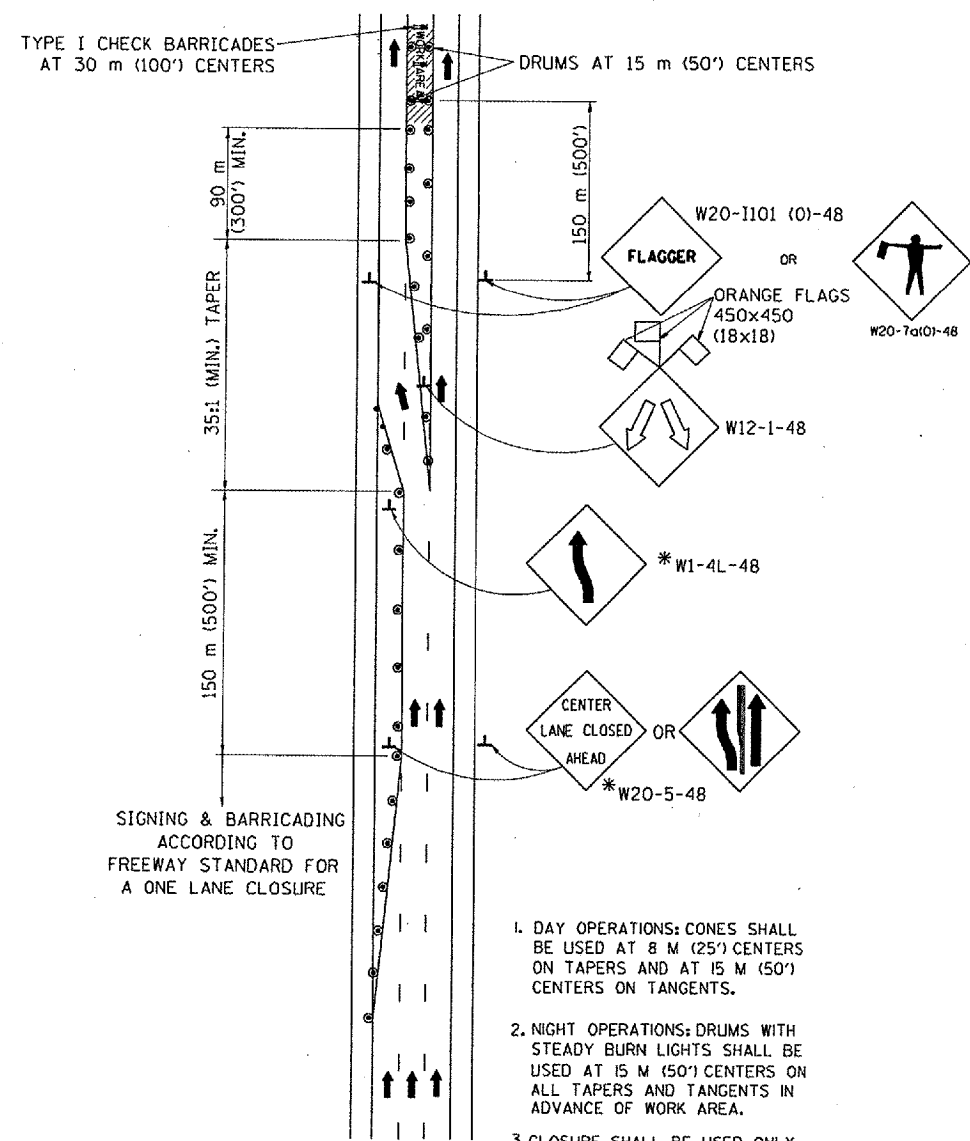
ILLINOIS DEPARTMENT OF TRANSPORTATION
FREWAY
ENTRANCE AND EXIT RAMP
CLOSURE DETAILS

SCALE: DATE: 3/1/2006
DRAWN BY: CHECKED BY: TC-8

PLOT DATE: 3/1/2006
FILE NAME: K:\Vistas\110806.dgn
PLOT SCALE: 50.0000 / IN.
USER NAME: legoo

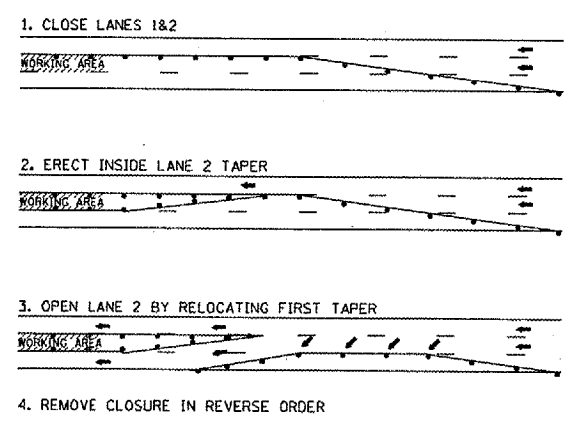
PLAN NO.	SECTION	COUNTY	DIST. DIST.	SHEET NO.
				15 12
STA.	TO STA.			
FED. ROAD DIST. NO. 1	ROAD NAME	FED. AID PROJECT		

CENTER LANE CLOSURE



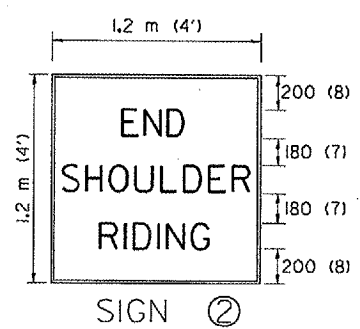
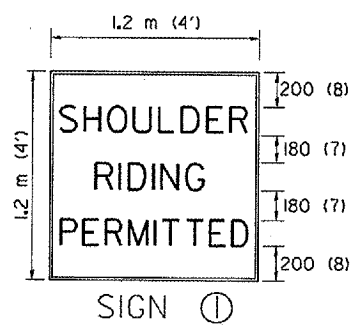
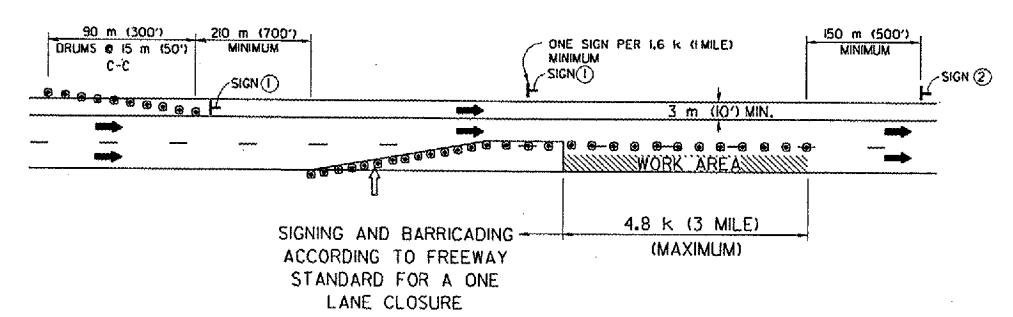
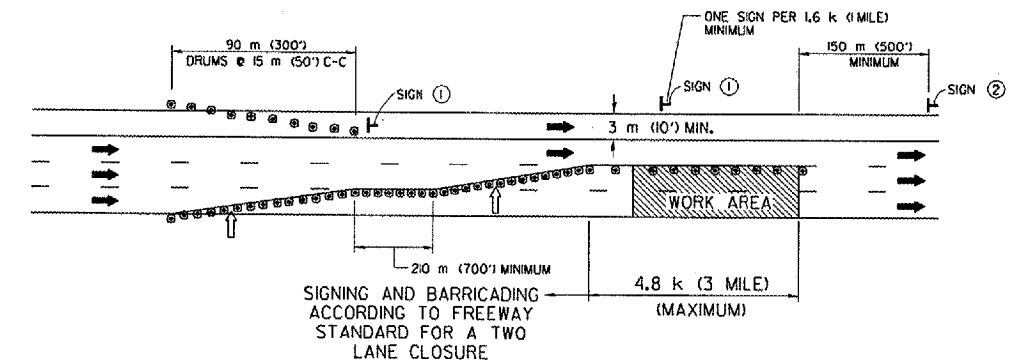
1. DAY OPERATIONS: CONES SHALL BE USED AT 8 M (25') CENTERS ON TAPERS AND AT 15 M (50') CENTERS ON TANGENTS.
2. NIGHT OPERATIONS: DRUMS WITH STEADY BURN LIGHTS SHALL BE USED AT 15 M (50') CENTERS ON ALL TAPERS AND TANGENTS IN ADVANCE OF WORK AREA.
3. CLOSURE SHALL BE USED ONLY FOR OPERATIONS LASTING 72 HOURS OR LESS.

INSTALLATION SEQUENCE



SHOULDER LANE

NOTE: CLOSURE SHALL BE USED ONLY FOR OPERATIONS LASTING 72 HOURS OR LESS.



150 (6) SERIES "C" LEGEND
BLACK LEGEND
WHITE REFLECT. BACKGROUND
25 (1) BORDER

SYMBOLS

- ↑ ARROWBOARD
 - ▨ WORK AREA
 - ◇ SIGN WITH 450x450 (18x18) ORANGE FLAGS ATTACHED *
 - ▬ SIGN ON PORTABLE OR PERMANENT SUPPORT *
 - CONES
 - DRUM WITH MONO-DIRECTIONAL STEADY BURNING LIGHT
- * ALL SIGNS SHALL BE MOUNTED AT A MINIMUM HEIGHT OF 1.5 m (5').

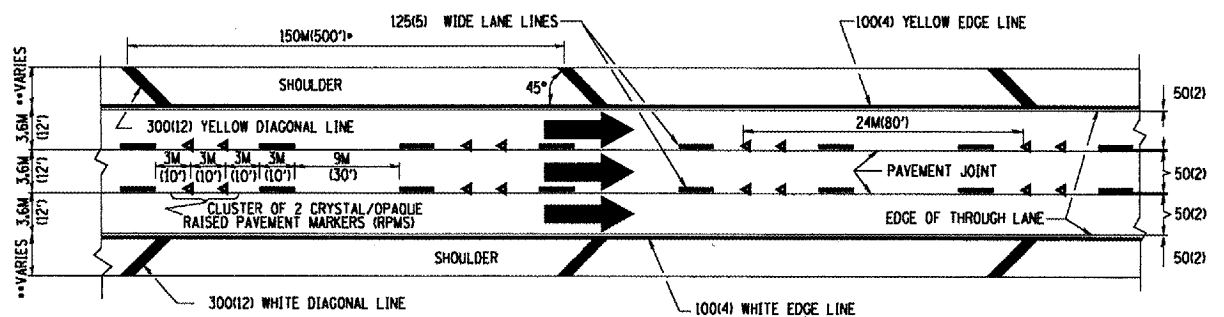
ALL DIMENSIONS ARE IN MILLIMETERS (INCHES) UNLESS OTHERWISE SHOWN

ILLINOIS DEPARTMENT OF TRANSPORTATION
TRAFFIC CONTROL DETAILS
FOR FREEWAY
CENTER LANE CLOSURE
SHOULDER LANE

REVISIONS	
NAME	DATE
PRIOR DETAILS ON TC-9 - JAF	4/03

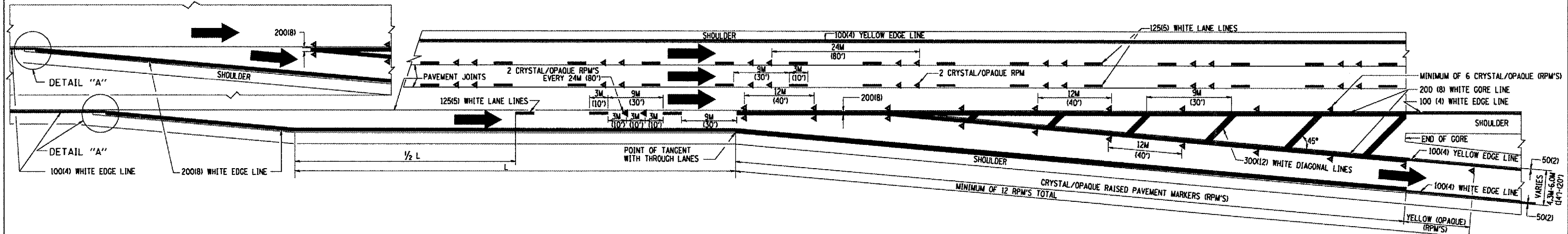
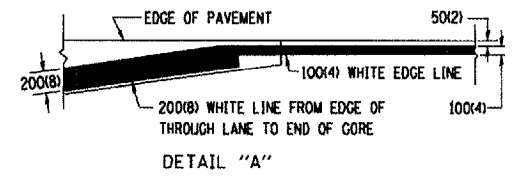
SCALE: NONE
DATE: 05/06/2003
DRAWN BY R.H.
CHECKED BY
TC-25

- THE DIAGONAL LINES SHALL BE SPACED AT 12M (40') C-C ACROSS ALL STRUCTURES WHICH ARE 150M (500') OR LESS IN LENGTH
- THE DIAGONAL LINES ARE NOT REQUIRED ON SHOULDERS WHICH ARE 1.8M (6') OR LESS IN WIDTH

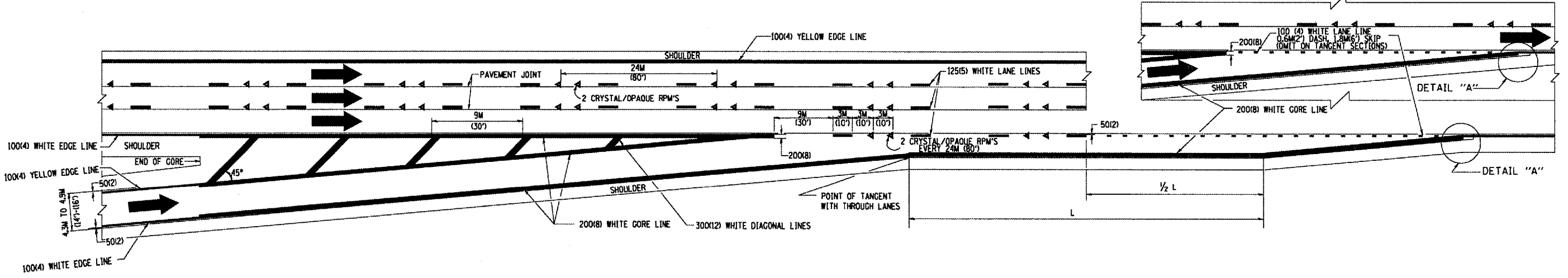


TYPICAL EDGE LINES & LANE LINES

- NOTES:
1. THERMO PLASTIC PAVEMENT MARKING LINE SHALL BE USED FOR THE EDGE LINES, GORE LINES, AND DIAGONAL LINES ON BITUMINOUS PAVEMENT ONLY.
 2. PREFORMED PLASTIC OR POLYUREA PAVEMENT MARKING LINE SHALL BE USED FOR ALL LANE LINES



TYPICAL EXIT RAMP PAVEMENT MARKINGS



TYPICAL ENTRANCE RAMP PAVEMENT MARKINGS

REVISIONS	
NAME	DATE
DWS	1/90
DWS	5/91
AH	3/96
DWS	7/96
JAF	2/06

ILLINOIS DEPARTMENT OF TRANSPORTATION

MULTI-LANE FREEWAY PAVEMENT MARKING DETAILS

SCALE: NONE

DATE: 3/1/2006

DRAWN BY C.A.D.O.

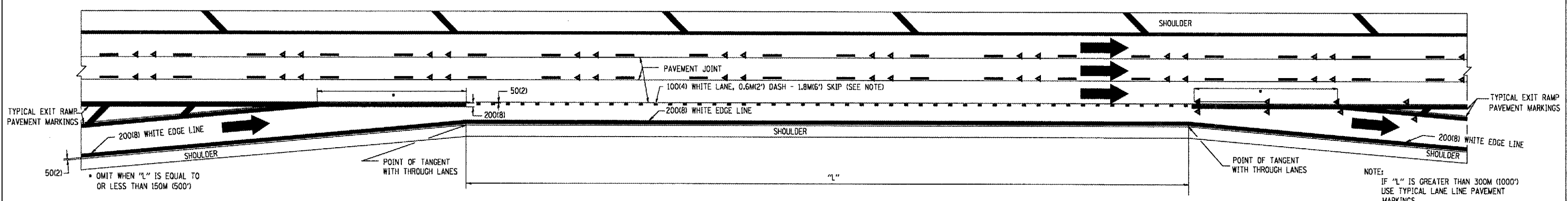
CHECKED BY

TC12 SHEET 1 OF 2

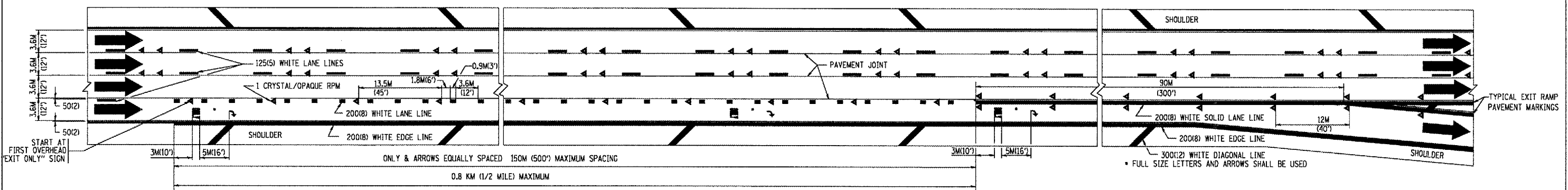
REVISION DATE: 02/28/06

PLOT DATE: 3/1/2006
 PLOT SCALE: 1/8"=1'-0"
 USER NAME: jaf

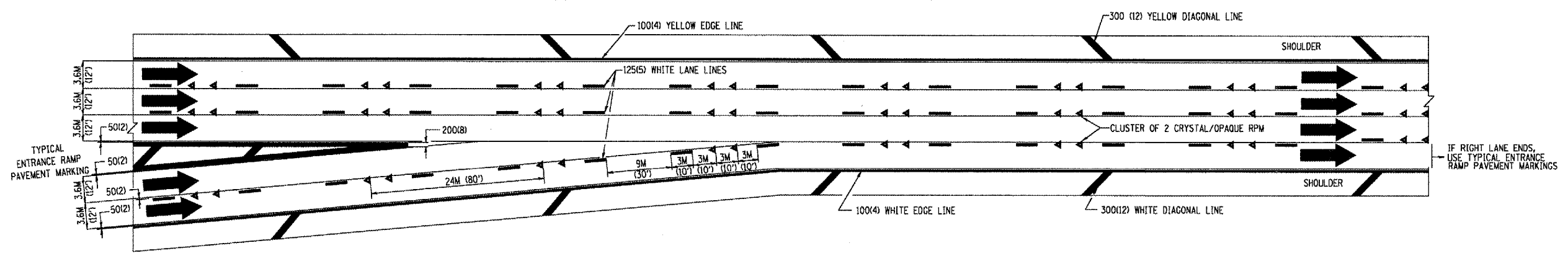
F.A.P. RTE.	SECTION	COUNTY	TOTAL SHEETS	SHEET NO.
342	530CR-PA COOK	15	14	
STA.		TO STA.		
FED. ROAD DIST. NO.	ILLINOIS FED. AID PROJECT			



TYPICAL ENTRANCE/EXIT RAMP COMBINATION PAVEMENT MARKINGS



TYPICAL EXIT ONLY LANE PAVEMENT MARKINGS



TYPICAL TWO LANE ENTRANCE RAMP PAVEMENT MARKINGS

PLOT DATE: 3/1/2006
 FILE NAME: K:\projects\022806\p12.dwg
 PLOT SCALE: 1/8" = 1'-0"
 USER NAME: jaygo

REVISIONS	
NAME	DATE
DWS	1/90
DWS	5/91

ILLINOIS DEPARTMENT OF TRANSPORTATION

MULTI-LANE FREEWAY PAVEMENT MARKING DETAILS

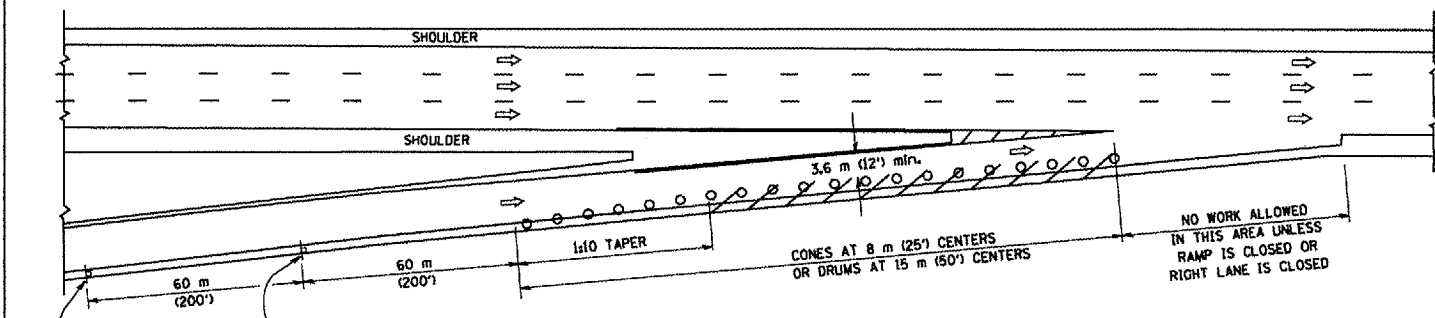
SCALE: NONE
DATE: 3/1/2006

DRAWN BY C.A.D.D.
CHECKED BY
TC12 SHEET 2 OF 2
REVISION DATE: 02/28/06

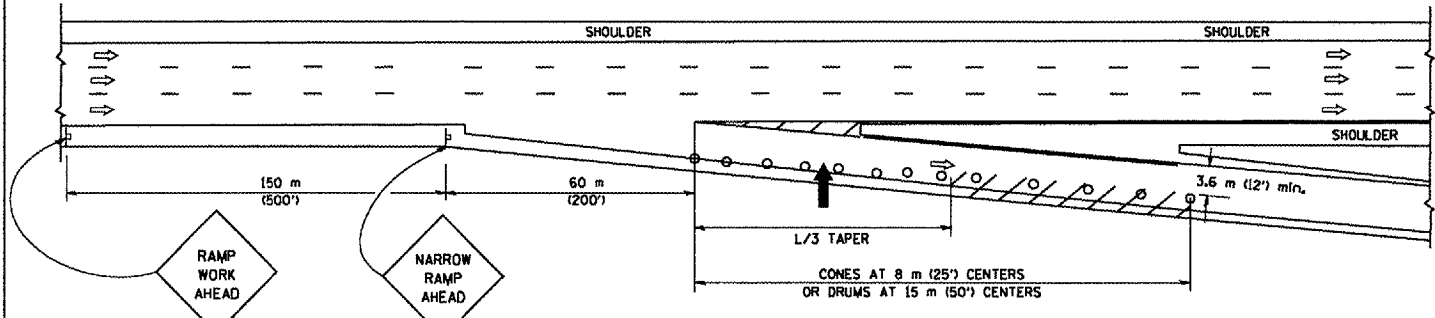
PARTIAL RAMP CLOSURE DETAILS

SHOULDER CLOSURE DETAILS

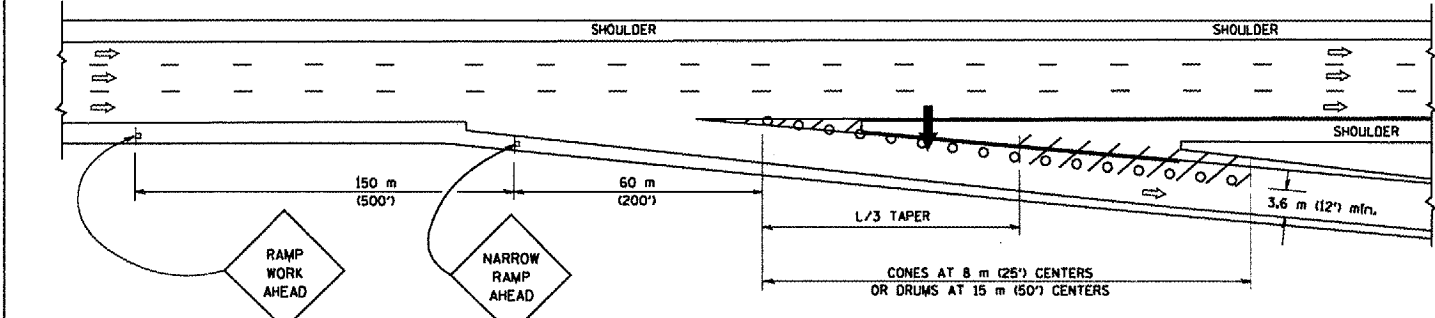
F.A. RTE.	SECTION	COUNTY	TOTAL SHEETS	SHEET NO.
342	530RL-PP	Cook	15	15
STA.	TO STA.			
FED. ROAD DIST. NO.	ILLINOIS	FED. AID PROJECT		



TYPICAL ENTRANCE RAMP



TYPICAL EXIT RAMP



TYPICAL EXIT RAMP

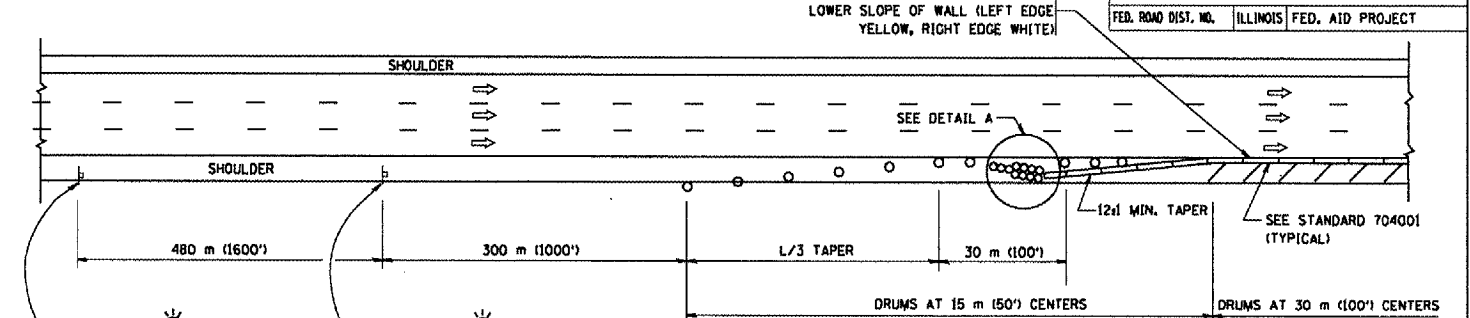
SYMBOLS

- ARROWBOARD
- WORK AREA
- SIGN ON PORTABLE OR PERMANENT SUPPORT
- FLAGGER WITH CONTROL SIGN
- DRUM WITH MONO-DIRECTIONAL STEADY BURNING LIGHT
- CONES - 700 (28) IN HEIGHT

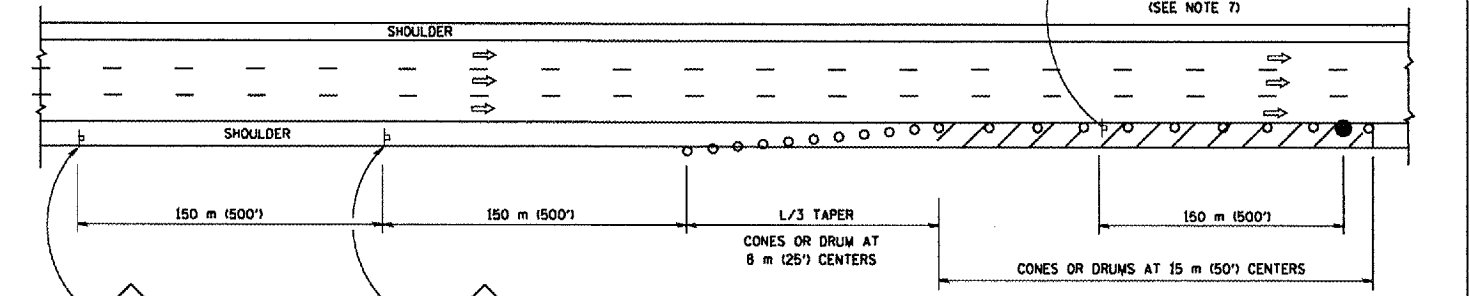
GENERAL NOTES

1. THE "L" DISTANCE EQUALS:

SPEED LIMIT	FORMULAS
80 km/h (45 mph) OR GREATER	METRIC ENGLISH $L = 0.65(W)(S)$ $L = (W)(S)$
W = WIDTH OF OFFSET IN METERS (FEET)	
S = NORMAL POSTED SPEED KM/H (MPH)	
2. PLASTIC DRUMS WITH HIGH PERFORMANCE REFLECTIVE SHEETING AND STEADY BURNING LIGHTS ARE REQUIRED FOR ALL NIGHTTIME CLOSURES.
3. ALL SIGNS SHALL BE POST MOUNTED IF THE CLOSURE TIME EXCEEDS FOUR DAYS.
4. FLASHING LIGHTS SHALL BE USED DURING THE HOURS OF DARKNESS AND SHALL BE INSTALLED ABOVE THE FIRST TWO SETS OF SIGNS.

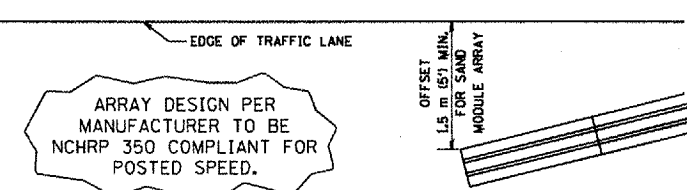


PERMANENT SHOULDER CLOSURE



DAYTIME SHOULDER CLOSURE

THIS DETAIL IS USED WHERE:
 1. VEHICLES, EQUIPMENT, WORKERS OR THEIR ACTIVITIES ENCR OACH IN AN AREA CLOSER THAN 4.5 m (15') TO THE EDGE OF PAVEMENT FOR A PERIOD IN EXCESS OF 15 MINUTES.



DETAIL "A"
 IMPACT ATTENUATOR, TEMPORARY
 (SEE NOTE 5)

5. THE IMPACT ATTENUATOR, TEMPORARY IS NOT REQUIRED WHEN THE TEMPORARY CONCRETE BARRIER WALL IS PROTECTED BY OR IS TIED INTO THE EXISTING GUARDRAIL. IF OFFSET IS LESS THAN 5 FEET USE "TRAFFIC BARRIER TERMINAL, TYPE III, TEMPORARY" DEVICE TO MEET NCHRP 350 FOR POSTED SPEED.
6. AUTHORIZATION FROM THE DISTRICT'S BUREAU OF TRAFFIC IS REQUIRED FOR ALL FREEWAY CLOSURES.
7. THE FLAGGER AND FLAGGER SIGN ARE REQUIRED AT THE ABOVE WORK SITES WHEN:
 - a. FOUR OR MORE WORK VEHICLES ENTER THE TRAFFIC LANES IN A ONE HOUR PERIOD.
 - b. THE WORK ACTIVITY REQUIRES FREQUENT ENCROACHMENT INTO THE LANE OPEN TO TRAFFIC.
 THE FLAGGER SHALL BE STATIONED APPROXIMATELY 30 m (100') TO 60 m (200') IN ADVANCE OF THE WORKERS.

ALL DIMENSIONS ARE IN MILLIMETERS (INCHES) UNLESS OTHERWISE SHOWN.

REVISIONS	
NAME	DATE
DWS	11/96
JAF	12/02
NCHRP 350	04/03
JAF	2/06

ILLINOIS DEPARTMENT OF TRANSPORTATION
 TRAFFIC CONTROL DETAILS
 FOR FREEWAY
 SHOULDER CLOSURES
 PARTIAL RAMP CLOSURES

SCALE: NONE
 DATE: 3/1/2006
 DRAWN BY: DWS
 CHECKED BY: TC-17

PLOT DATE: 3/1/2006
 FILE NAME: C:\Users\dws\My Documents\749p
 PLOT SCALE: 0.800000 / 1.000000
 USER NAME: dws