

R.O.W, EASEMENT AND EROSION CONTROL

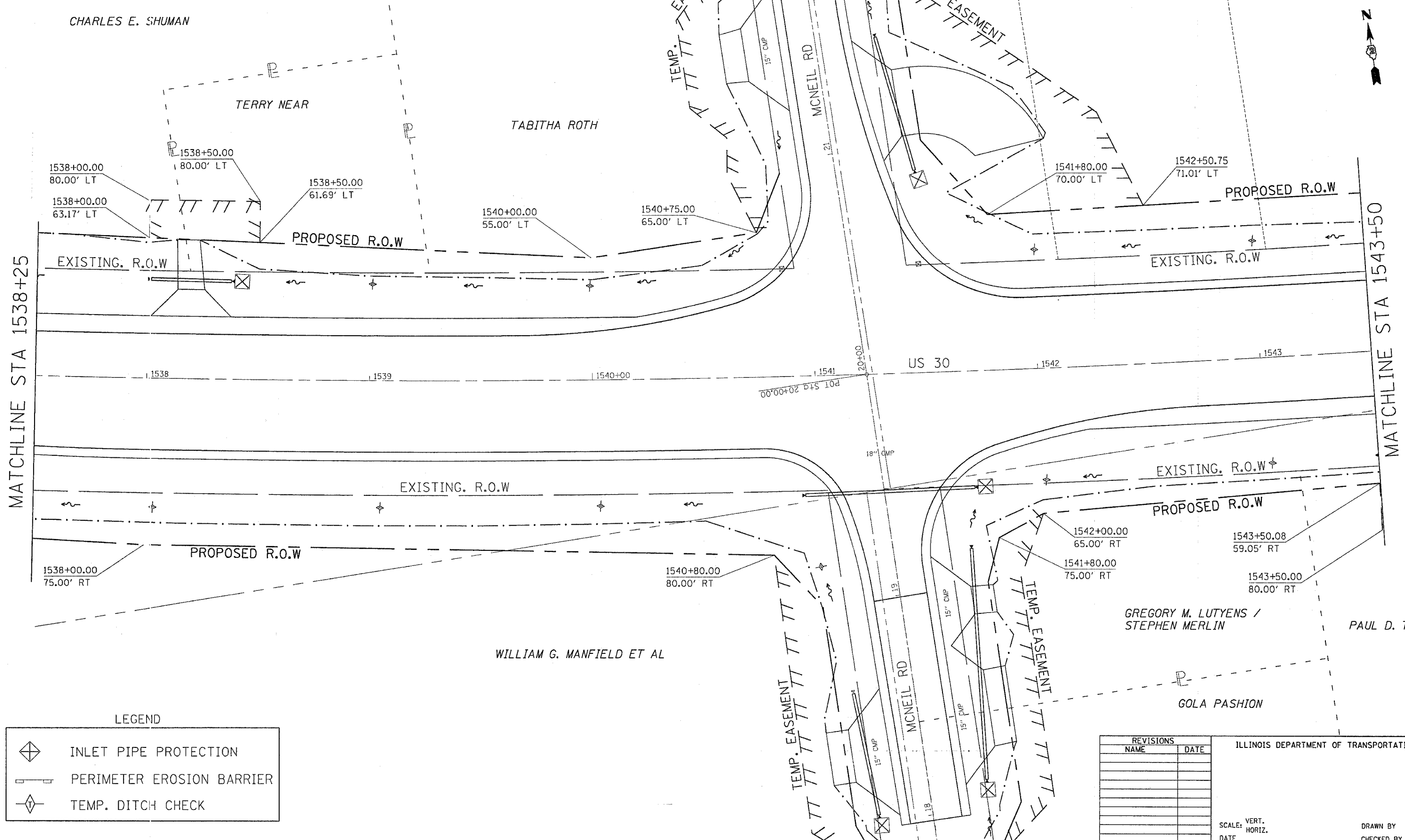
CONTRACT NO. 64563

F.A.U. RTE.	SECTION	COUNTY	TOTAL SHEETS	SHEET NO.
5564	111-M-1	WHITESIDE	78	27
STA.		TO STA.		
FED. ROAD DIST. NO.		ILLINOIS FED. AID PROJECT		

CHARLES E. SHUMAN

KATHERINE C. VASQUEZ

KATHERINE C. VASQUEZ



MATCHLINE STA 1538+25

MATCHLINE STA 1543+50

LEGEND

	INLET PIPE PROTECTION
	PERIMETER EROSION BARRIER
	TEMP. DITCH CHECK

REVISIONS	
NAME	DATE

ILLINOIS DEPARTMENT OF TRANSPORTATION

SCALE: VERT.
HORIZ.
DATE

DRAWN BY
CHECKED BY

PLOT DATE = Tue Aug 08 11:55:21 2006
 FILE NAME = I:\2007\6077867\6077867.dgn
 PLOT SCALE = 28.0000 / 1" = 100'
 USER NAME = duncant

R.O.W. EASEMENT AND EROSION CONTROL