

| F.A.I. RTE. | SECTION | COUNTY | TOTAL SHEETS | SHEET NO. |
|-------------|-----------|--------|--------------|-----------|
| 80 | 37-1HBR-1 | HENRY | 133 | 1 |

STATE OF ILLINOIS
DEPARTMENT OF TRANSPORTATION
DIVISION OF HIGHWAYS

**PROPOSED
HIGHWAY PLANS**

FAI ROUTE 80 (I-80)
SECTION 37-1HBR-1
PROJECT NHI BRI-080-1(139)008
HENRY COUNTY
BRIDGE REPLACEMENT

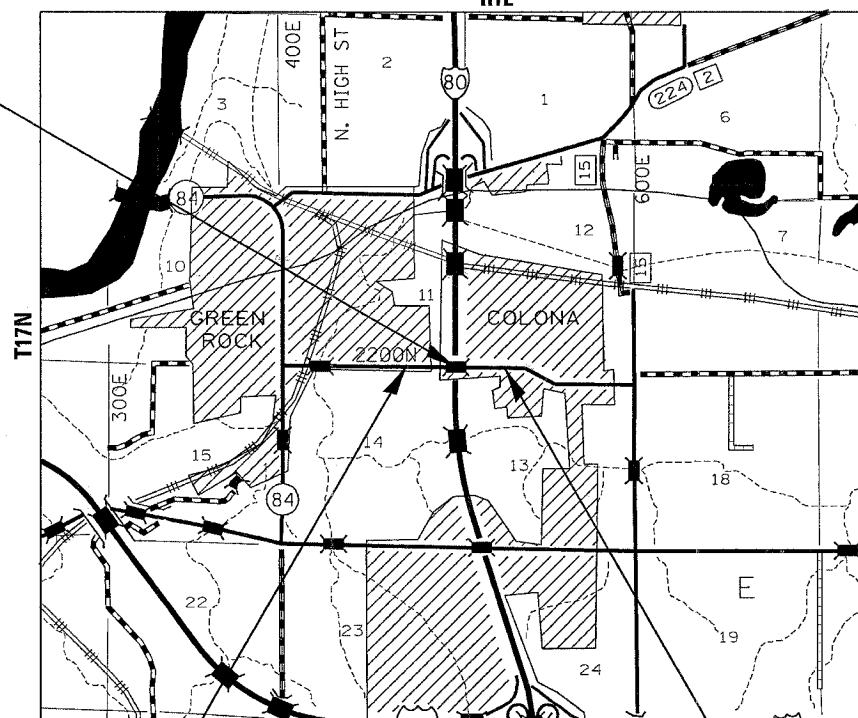
C-92-002-07
R1E

SQUAD LEADER: PAUL DREZEN (815)284-5519

FOR INDEX OF SHEETS, SEE SHEET NO. 2
FOR STATE STANDARDS, SEE SHEET NO. 2



POPPYGARDEN ROAD BRIDGE OVER I-80
EXISTING SN-037-0093
PROPOSED SN-037-0171
STA 50+70.90 - STA 52+76.90



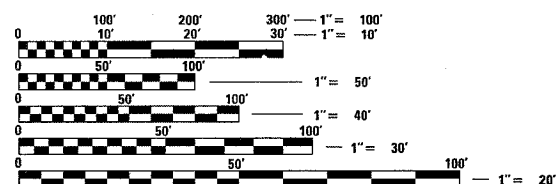
LOCATION PLAN
SCALE - NA

POPPY GARDEN ROAD
IMPROVEMENT BEGINS STA 35+50
SECTION BEGINS STA 35+90

POPPY GARDEN ROAD
IMPROVEMENT & SECTION ENDS
STA 63+70

GROSS LENGTH OF PROJECT = 2780 LIN. FT = .53 MI.
NET LENGTH = 2780 LIN. FT. = .53 MI.

SCALES



FULL SIZE PLANS HAVE BEEN PREPARED USING STANDARD
ENGINEERING SCALES. REDUCED SIZED PLANS WILL NOT
CONFORM TO STANDARD SCALES. IN MAKING MEASUREMENTS
ON REDUCED PLANS, THE ABOVE SCALES MAY BE USED.

J.U.L.I.E.
JOINT UTILITY LOCATION INFORMATION FOR EXCAVATION
1-800-892-0123

COLONA TOWNSHIP 11,12,13,14
CONTRACT NO. 64602

STATE OF ILLINOIS
DEPARTMENT OF TRANSPORTATION
DIVISION OF HIGHWAYS

SUBMITTED Aug 30 20 06
Gregory Mount
DEPUTY DIRECTOR OF HIGHWAYS, REGION ENGINEER

October 13, 20 06
Mike Nunez
ENGINEER OF DESIGN AND ENVIRONMENT

October 13, 20 06
Milton R. Seeger, P.E.
DIRECTOR OF HIGHWAYS, CHIEF ENGINEER

PRINTED BY THE AUTHORITY
OF THE STATE OF ILLINOIS

REGION 2, DISTRICT 2
DIXON

PROJECT ENGINEER: MASOOD AHMAD