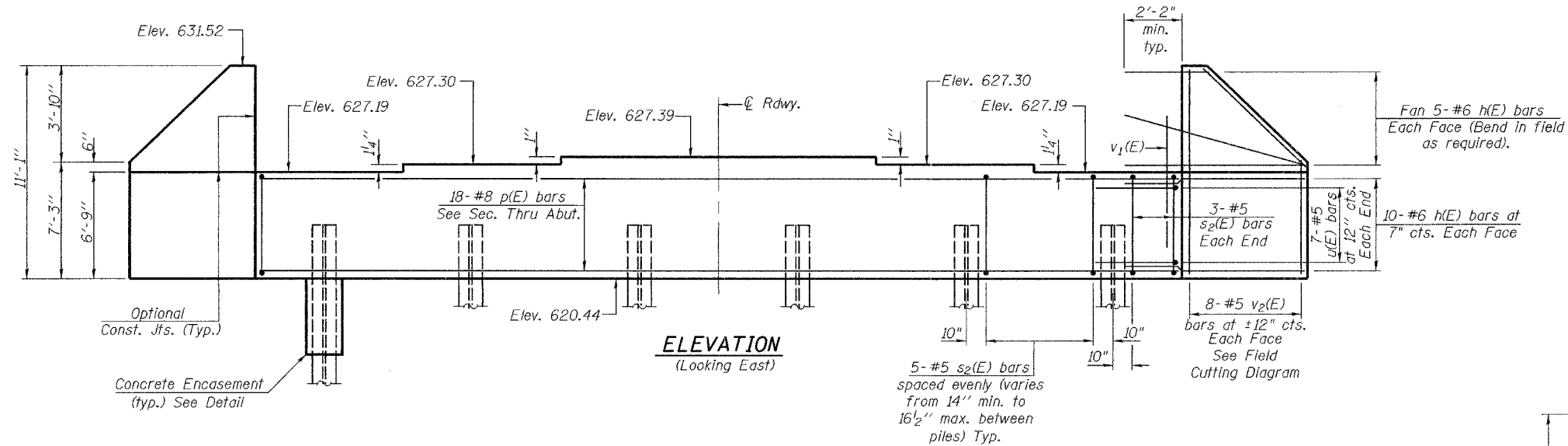


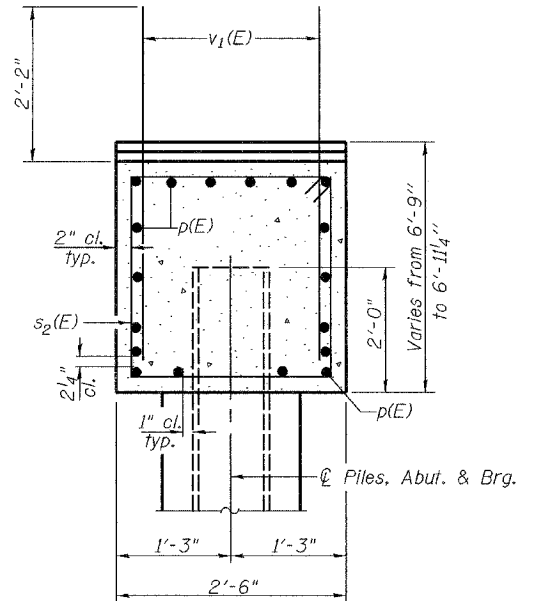
STATE OF ILLINOIS  
DEPARTMENT OF TRANSPORTATION

ROUTE NO.	SECTION	COUNTY	TOTAL SHEETS	SHEET NO.	SHEET NO. 13 18 SHEETS
F.A.I. 80	37-1HBR-1	HENRY	133	76	
FED. ROAD DIST. NO. 7	ILLINOIS	FED. AID PROJECT	Contract #64602		

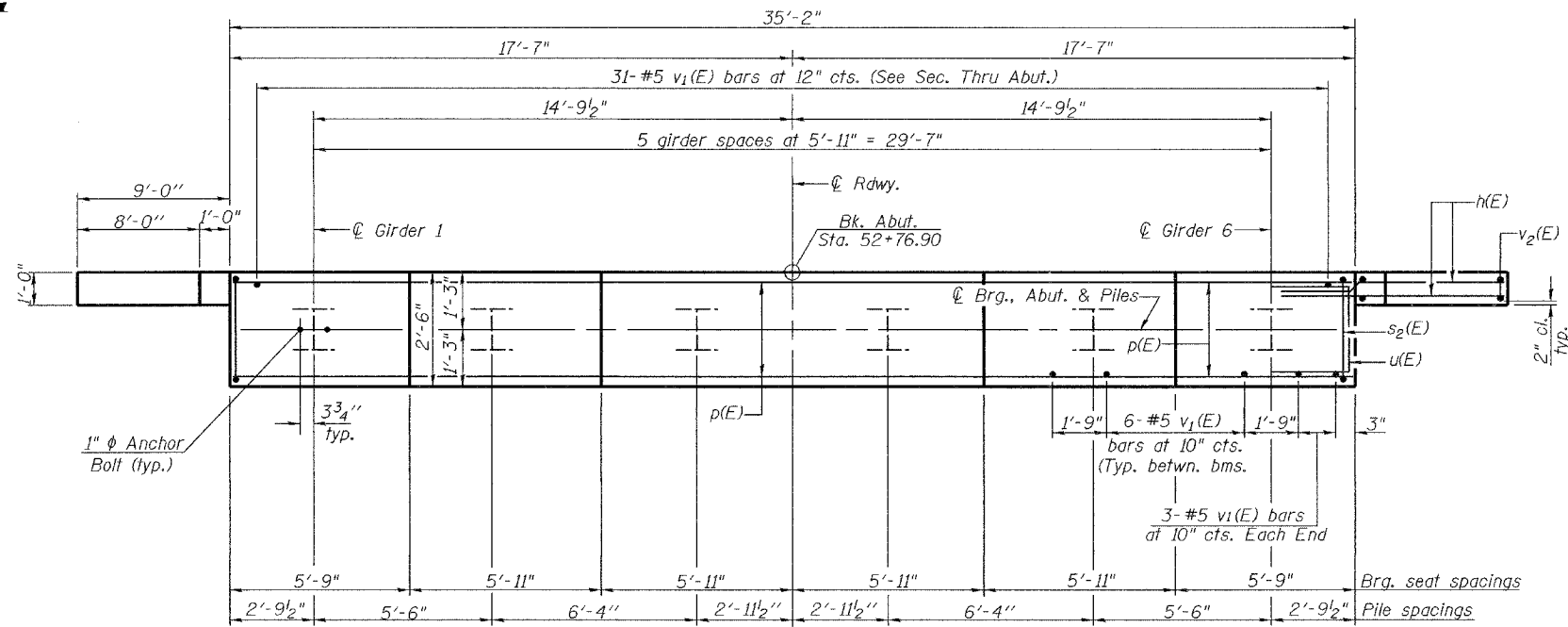
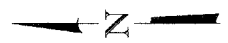
Notes:  
Pour steps monolithically with cap.  
Reinforcement bars designated (E) shall be epoxy coated.  
Space reinforcement in cap to miss anchor bolts.  
For anchor bolt installation details see sheet 11 of 18.



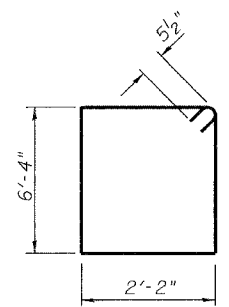
**ELEVATION**  
(Looking East)



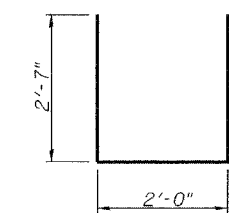
**SEC. THRU ABUT.**



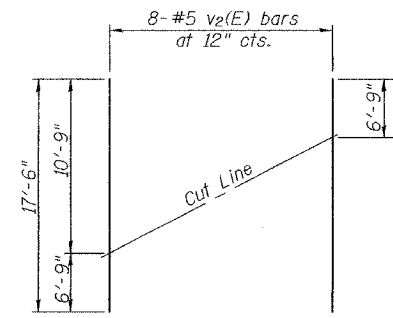
**PLAN**



**BAR s2(E)**



**BAR u(E)**



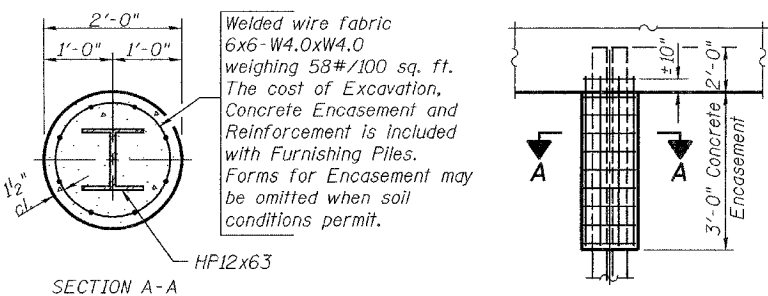
**FIELD CUTTING DIAGRAM**

**BILL OF MATERIAL**

Bar No.	Size	Length	Shape
h(E)	60 #6	11'-10"	—
p(E)	18 #8	34'-10"	—
s2(E)	31 #5	17'-11"	□
u(E)	14 #5	7'-2"	□
v1(E)	67 #5	4'-4"	—
v2(E)	16 #5	17'-6"	—
Concrete Structures	Cu. Yd.	28.4	
Reinforcement Bars, Epoxy Coated	Pound	4020	
Furnishing Steel Piles HP12x63	Foot	370	
Driving Piles	Foot	370	
Structure Excavation	Cu. Yd.	87.5	
Test Pile Steel HP 12x63	Each	1	

**PILE DATA**

Type: Steel HP12x63  
Nominal Required Bearing: 450 kips  
Factored Resistance Available: 225 kips  
Est. Length: 74'  
No. of Production Piles: 5  
No. of Test Piles: 1



**PILE ENCASEMENT DETAIL**

DESIGNED	Michael D. Cima
CHECKED	Phillip R. Litchfield
DRAWN	R. Sommer
CHECKED	MDC/PRL

September 25, 2006  
EXAMINED *Thomas J. Donagale*  
PASSED *Ralph E. Anderson*  
ENGINEER OF BRIDGES AND STRUCTURES

**EAST ABUTMENT**  
F.A.I. RT. 80 SEC. 37-1HBR-1  
HENRY COUNTY  
STATION 461+73.82  
STRUCTURE NO. 037-0171