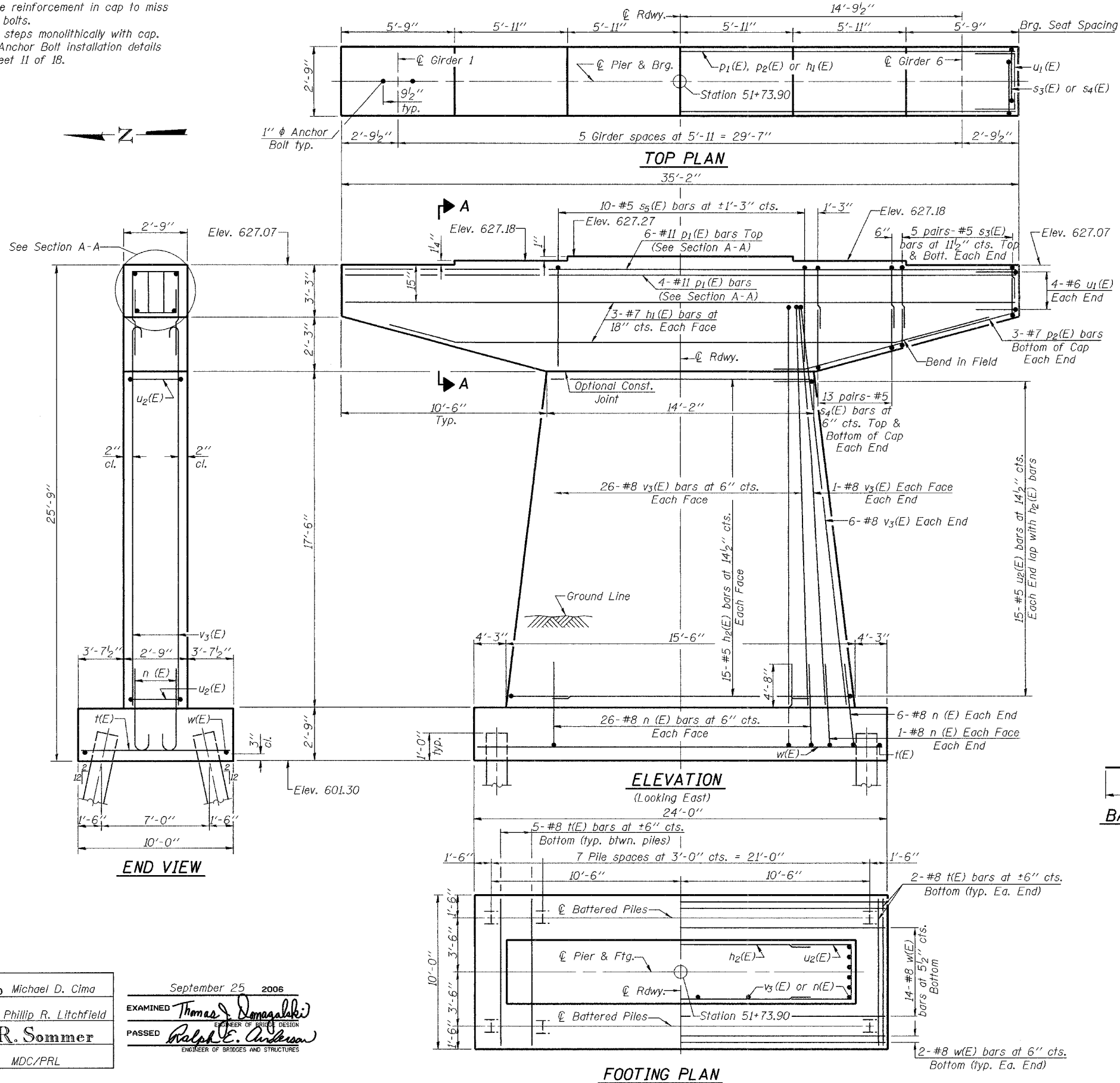


STATE OF ILLINOIS
DEPARTMENT OF TRANSPORTATION

ROUTE NO.	SECTION	COUNTY	STATION	SHEET NO.	SHEET NO. 14 18 SHEETS
F.A.I. 80	37-IHBR-1	HENRY	133	77	
FED. ROAD DIST. NO. 7	ILLINOIS	FED. AID PROJECT			

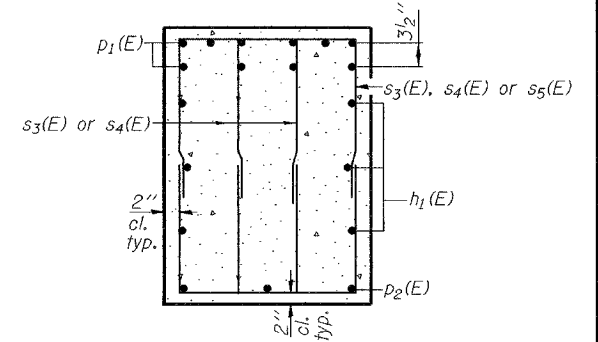
Contract #64602

Notes:
Space reinforcement in cap to miss anchor bolts.
Pour steps monolithically with cap.
For Anchor Bolt installation details See sheet 11 of 18.



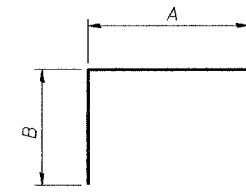
PILE DATA

Type: Steel HP12x63
Nominal Required Bearing: 442.8 kips
Factored Resistance Available: 221.4 kips
Est. Length: 55'
No. of Production Piles: 15
No. of Test Piles: 1



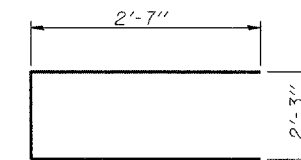
SECTION A-A

BARS s3(E), s4(E) & s5(E)

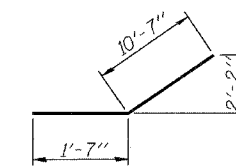


A & B DIMENSIONS

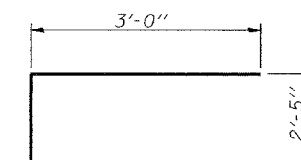
Bar	A	B
s3(E)	1'-5"	3'-0"
s4(E)	1'-5"	3'-8"
s5(E)	2'-4"	5'-2"



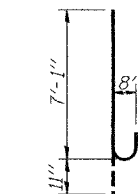
BAR u1(E)



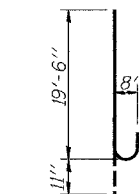
BAR p2(E)



BAR u2(E)



BAR n(E)



BAR v3(E)

BILL OF MATERIAL

Bar	No.	Size	Length	Shape
h1(E)	6	#7	34'-10"	—
h2(E)	30	#5	13'-10"	—
n(E)	68	#8	8'-0"	—
p1(E)	10	#11	34'-10"	—
p2(E)	6	#7	12'-2"	—
s3(E)	40	#5	7'-5"	□
s4(E)	104	#5	8'-9"	□
s5(E)	10	#5	12'-8"	□
t(E)	39	#8	9'-8"	—
u1(E)	8	#6	7'-5"	—
u2(E)	30	#5	8'-5"	—
v3(E)	68	#8	20'-5"	—
w(E)	18	#8	23'-8"	—
Structure Excavation		Cu. Yd.	87.0	
Concrete Structures		Cu. Yd.	68.4	
Reinforcement Bars, Epoxy Coated		Pound	11910	
Furnishing Steel Piles HP12x63		Foot	825	
Driving Piles		Foot	825	
Test Pile Steel HP12x63		Each	1	

Reinforcement Bars designated (E) shall be epoxy coated.

PIER
F.A.I. RT. 80 SEC. 37-IHBR-1
HENRY COUNTY
STATION 461+73.82
STRUCTURE NO. 037-0171

DESIGNED	Michael D. Cima
CHECKED	Phillip R. Litchfield
DRAWN	R. Sommer
CHECKED	MDC/PRL

September 25 2006
EXAMINED *Thomas J. Donagale*
PASSED *Ralph E. Anderson*
ENGINEER OF BRIDGE DESIGN
ENGINEER OF BRIDGES AND STRUCTURES

FOOTING PLAN