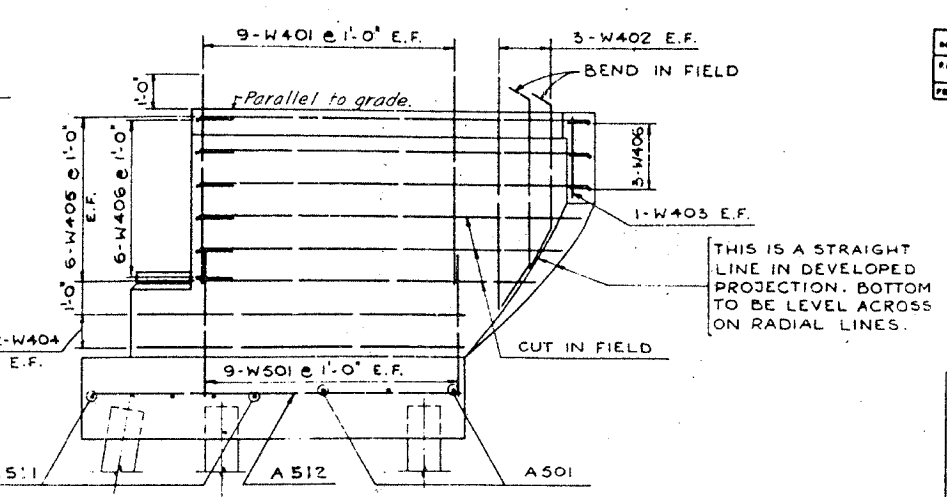
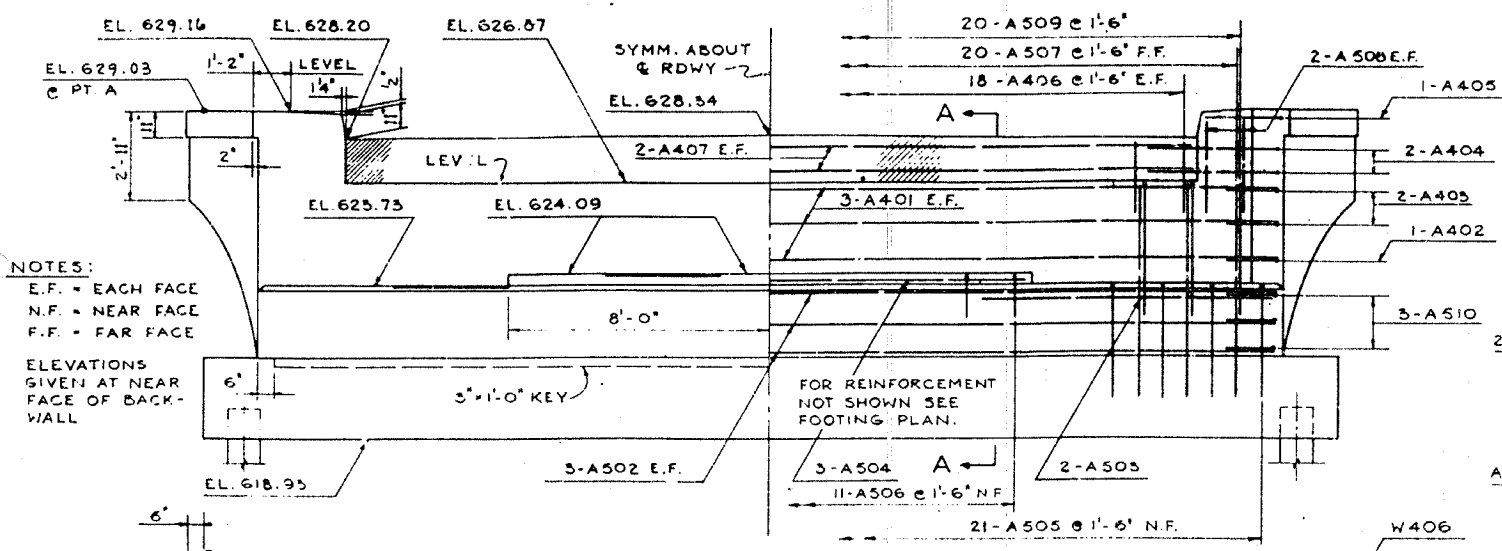
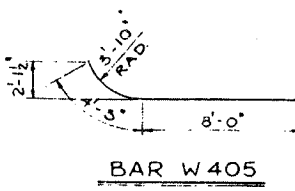


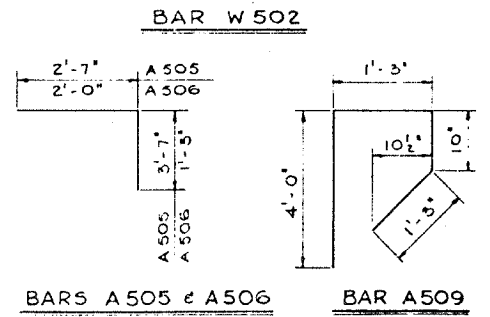
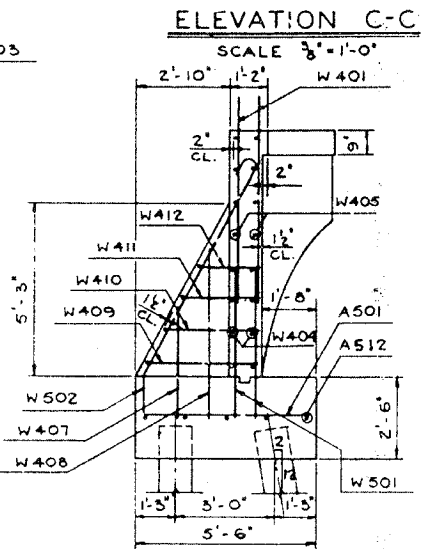
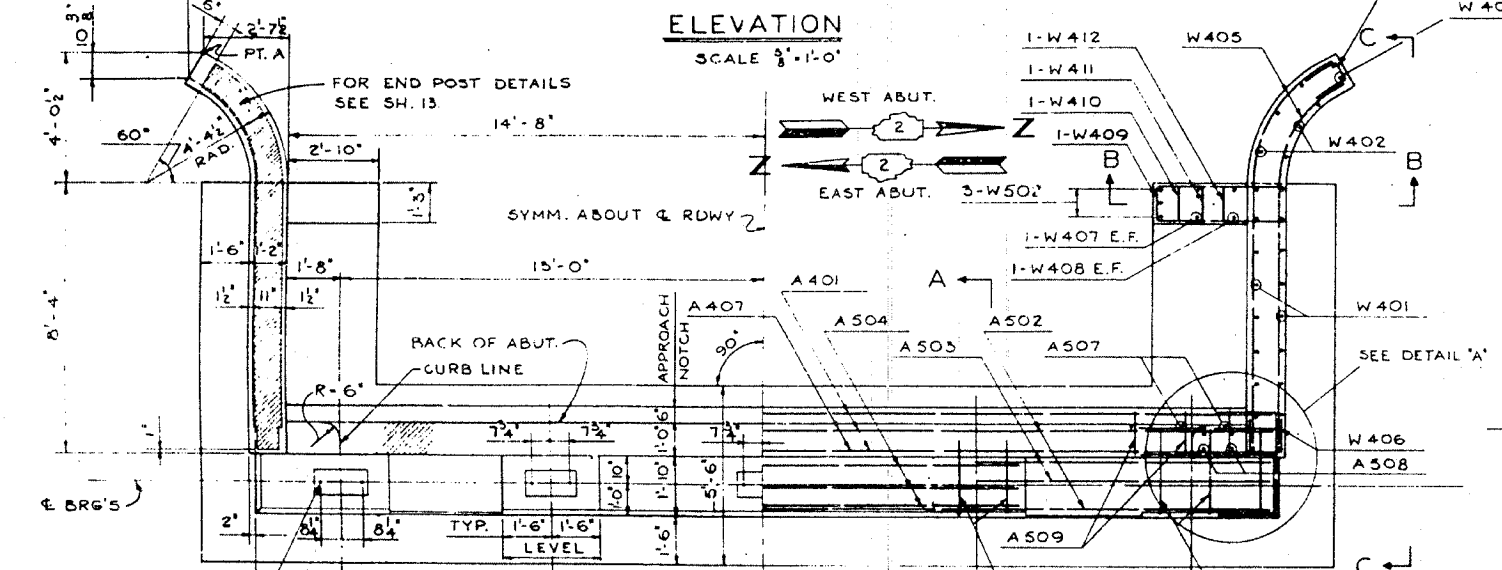
DATE	BY	QUANTITY	TOTAL	SHEET
F.A.I. 80	37-100-1	REBAR	133	84
REV. NO.	REV. BY	ILLUM.	FOR 20 00	



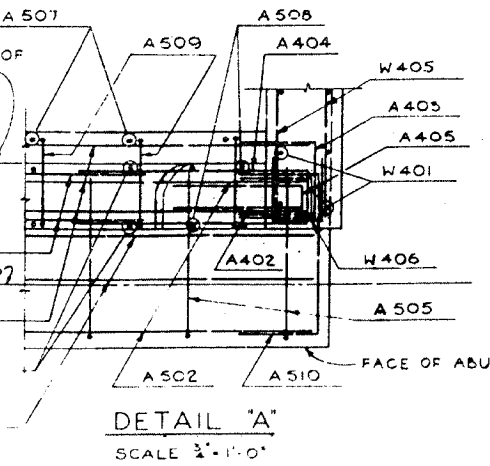
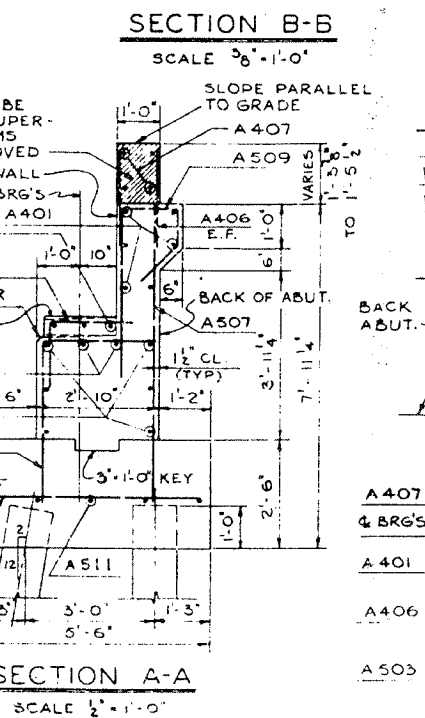
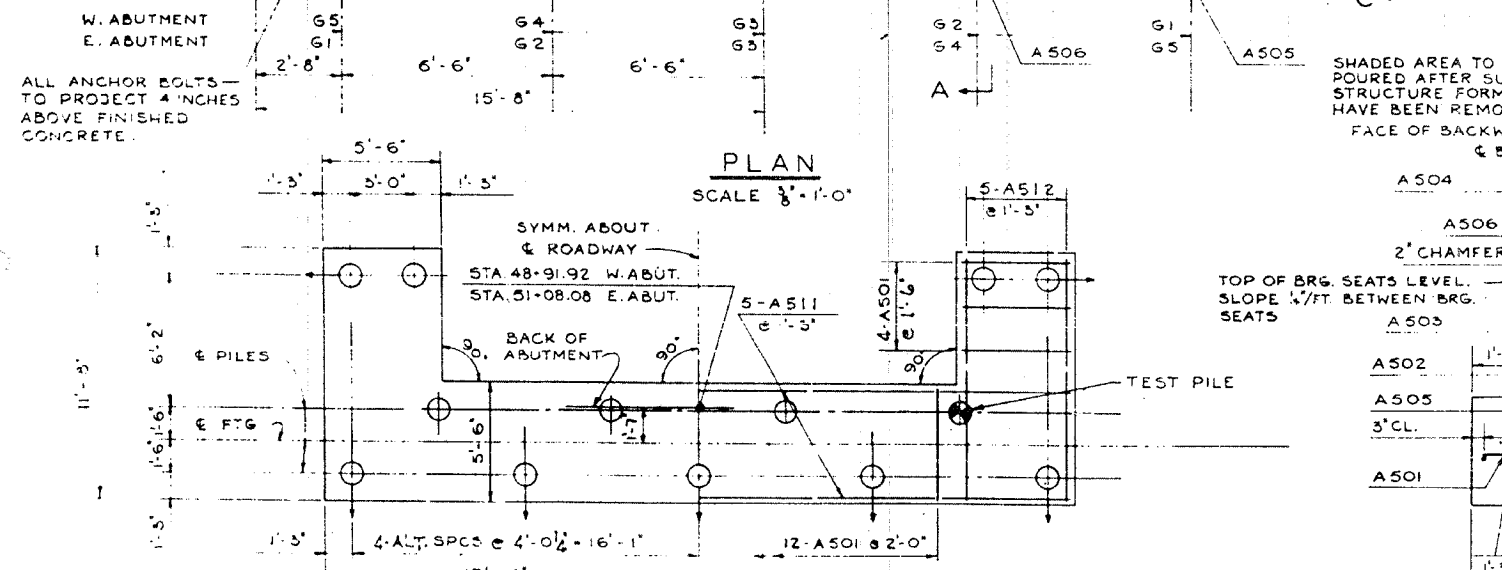
NOTES:  
E.F. = EACH FACE  
N.F. = NEAR FACE  
F.F. = FAR FACE  
ELEVATIONS GIVEN AT NEAR FACE OF BACK-WALL



BAR LIST - 2 ABUTMENTS					
BAR	NUMBER	SIZE	LENGTH	SHAPE	WEIGHT
A401	12	4	31'-0"		248
A402	4	4	2'-8"		7
A403	8	4	3'-2"		17
A404	8	4	8'-0"		43
A405	4	4	5'-2"		14
A406	72	4	2'-6"		120
A407	8	4	25'-9"		138
A501	40	5	5'-0"		209
A502	12	5	31'-0"		388
A503	8	5	9'-0"		75
A504	6	5	15'-6"		97
A505	42	5	6'-2"		270
A506	22	5	3'-3"		75
A507	40	5	6'-9"		282
A508	16	5	5'-5"		57
A509	40	5	7'-4"		306
A510	12	5	5'-0"		63
A511	10	5	34'-2"		356
A512	20	5	11'-2"		233
W401	72	4	6'-5"		309
W402	24	4	7'-2"		115
W403	8	4	2'-6"		13
W404	16	4	10'-0"		107
W405	48	4	12'-3"		393
W406	36	4	2'-8"		64
W407	8	4	3'-3"		17
W408	8	4	5'-3"		28
W409	4	4	7'-6"		20
W410	4	4	6'-6"		17
W411	4	4	5'-6"		15
W412	4	4	4'-6"		12
W501	72	5	4'-9"		357
W502	12	5	9'-7"		120
TOTAL					4 585



BAR	A	B
A402	1'-0"	8'
A403	1'-0"	1'-2"
A404	5'-8"	8'
A405	2'-5"	8'
A510	1'-5"	2'-6"
W406	1'-0"	8'
W409	3'-3"	1'-0"
W410	2'-9"	1'-0"
W411	2'-3"	1'-0"
W412	1'-9"	1'-0"



NOTES: ALL BAR DIMENSIONS ARE OUT TO OUT. ALL BAR MARKS ARE TO BE PREFIXED FOR SHIPMENT WITH LETTER 'W' FOR WEST ABUTMENT AND LETTER 'E' FOR EAST ABUTMENT. FOR EXAMPLE: WA401, EW406. USE HALF OF THE NUMBER GIVEN IN BAR LIST FOR EACH ABUTMENT.

BILL OF MATERIAL - 2 ABUT'S		
ITEM	UNIT	QUANTITY
CLASS X CONCRETE	CU YD	90.8
REINFORCEMENT BARS	POUND	4,585
DRIVING CONCRETE PILES	LIN FT	1,200
FURNISHING CONCRETE PILES	LIN FT	1,200
TEST PILE CONCRETE	EACH	2

DE LELW, CATHER & CO. ENGINEERS  
DESIGNED BY V.K. BURKEVICS  
DRAWN BY V.K. BURKEVICS  
CHECKED E.S. MARTINS  
IN CHARGE E.S. MARTINS  
APPROVED L.H. RIAN

FOOTING PLAN  
SCALE 1/4" = 1'-0"

NOTES:  
ALL PILES ARE CONCRETE PILES, 25 TON CAPACITY, FOR LENGTHS SEE SH. 7  
⊙ DENOTES BATTER PILES.

ABUTMENT DETAILS  
F.A.I. 80 SECTION 37-100-1  
F.A.I. 80 UNDER S.B.L.-7 (ALT.)  
HENRY COUNTY  
STATION 461+72.02  
SCALE: AS NOTED DATE: