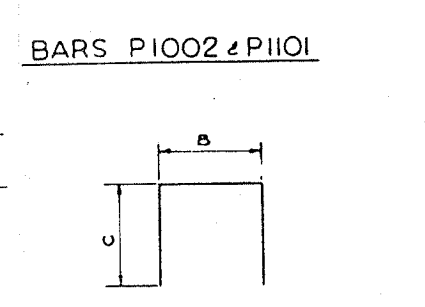
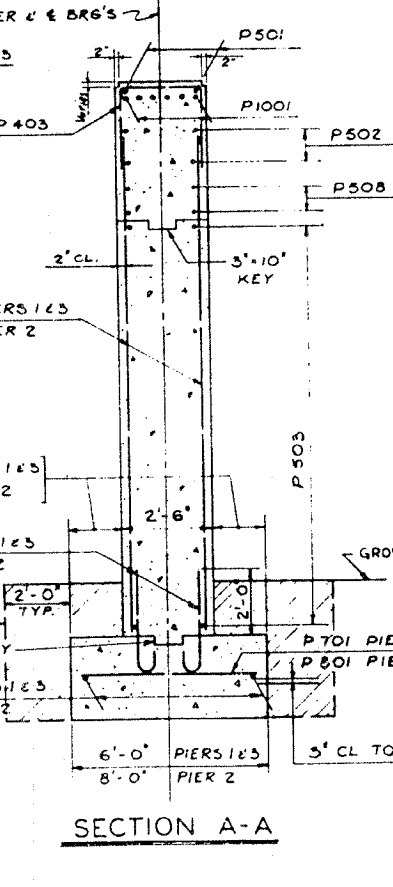
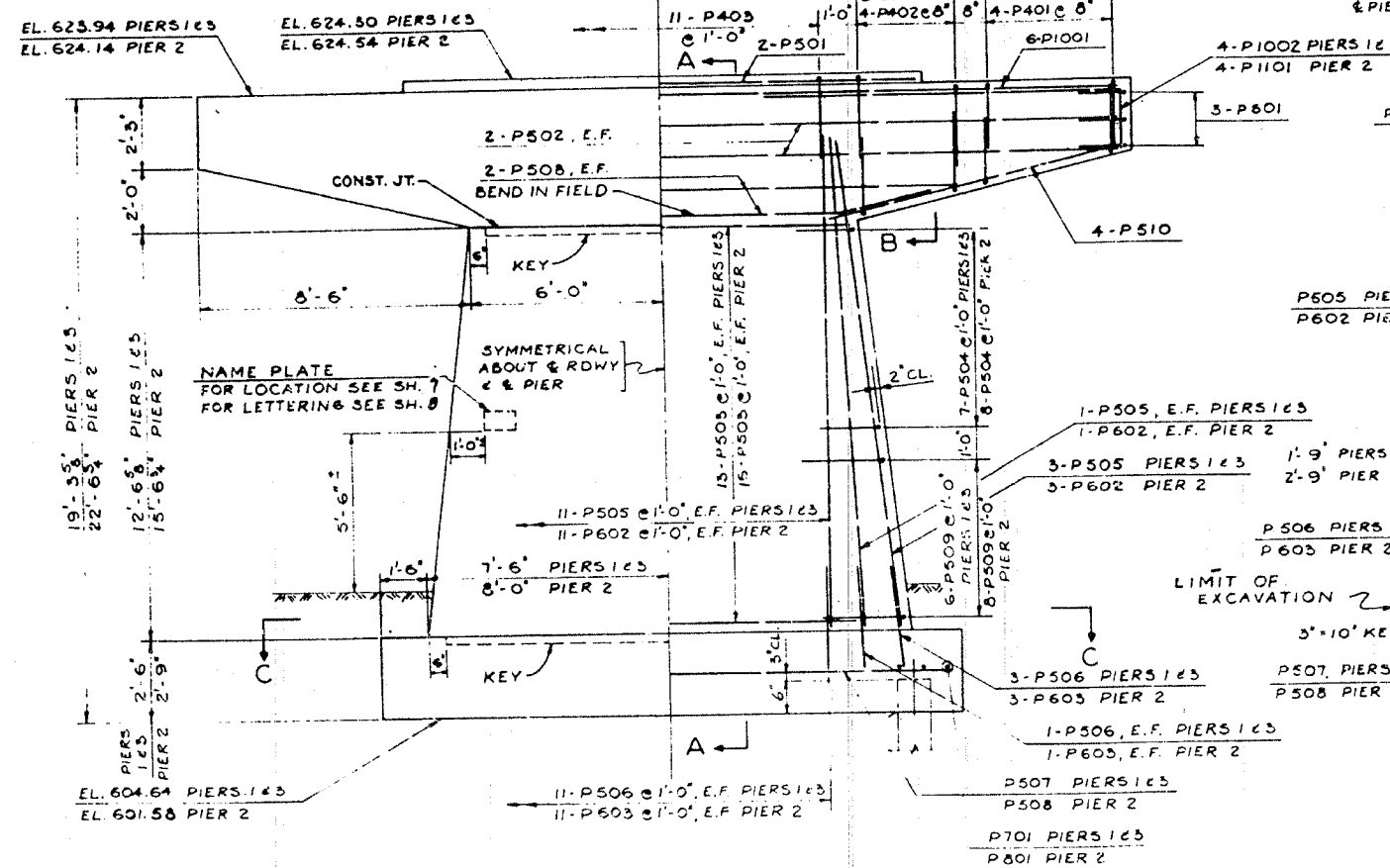
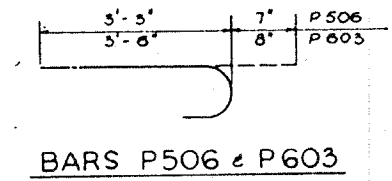
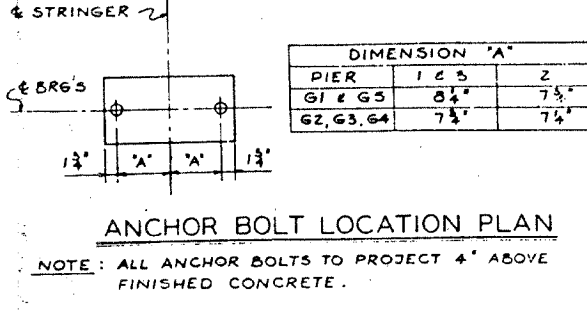
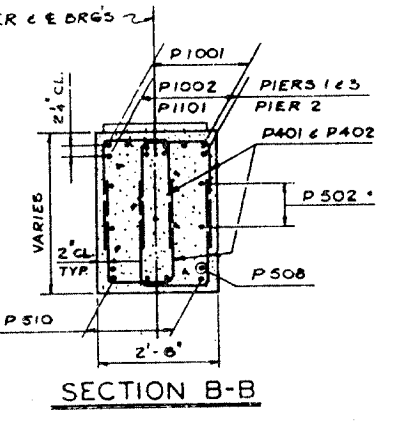
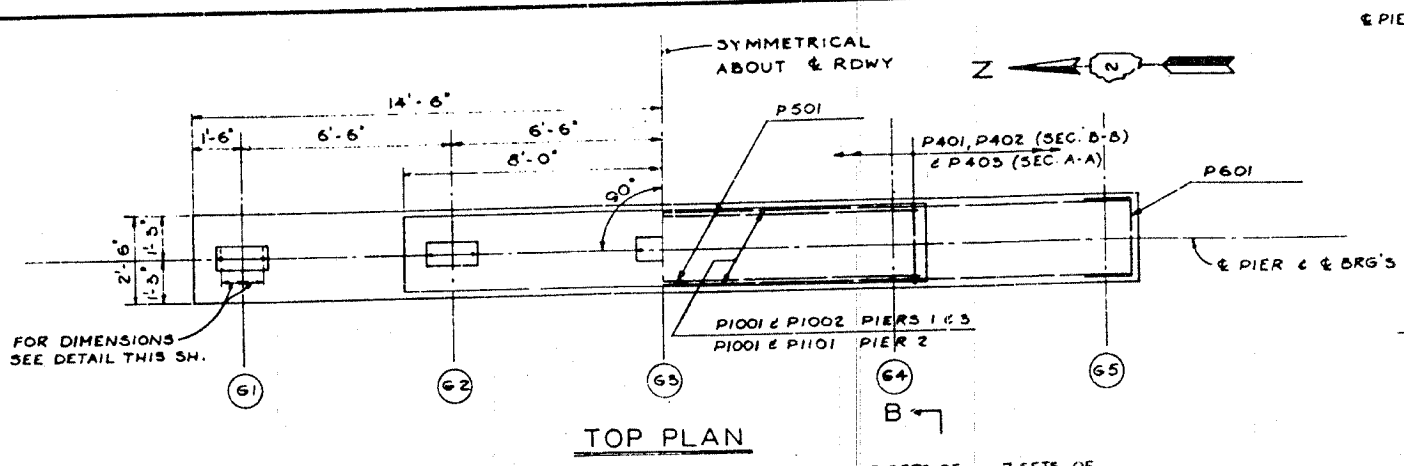


ROUTE NO.	SECTION	COUNTY	TOTAL SHEETS	SHEET NO.
F.A.I. 80	37-118-1	HENRY	153	85
FED. ROAD DIST. NO.	ILLINOIS	FEB. 28 '34		

DIMENSION 'A'			
PIER	1 & 3	2	
G1 & G3	8' 4"	7' 5"	
G2, G3, G4	7' 3"	7' 4"	



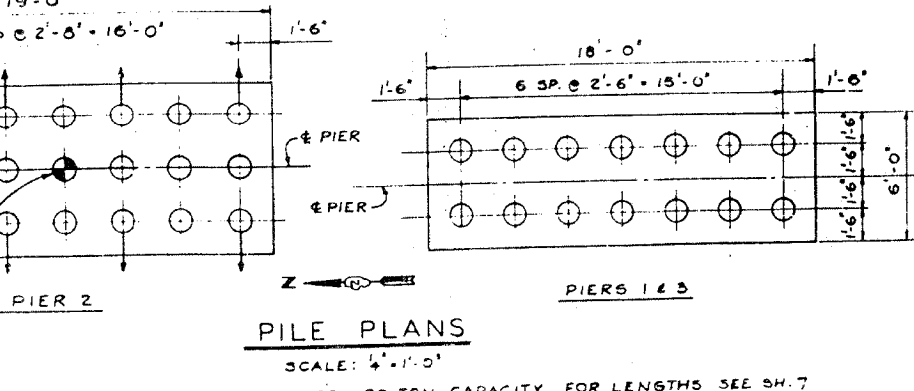
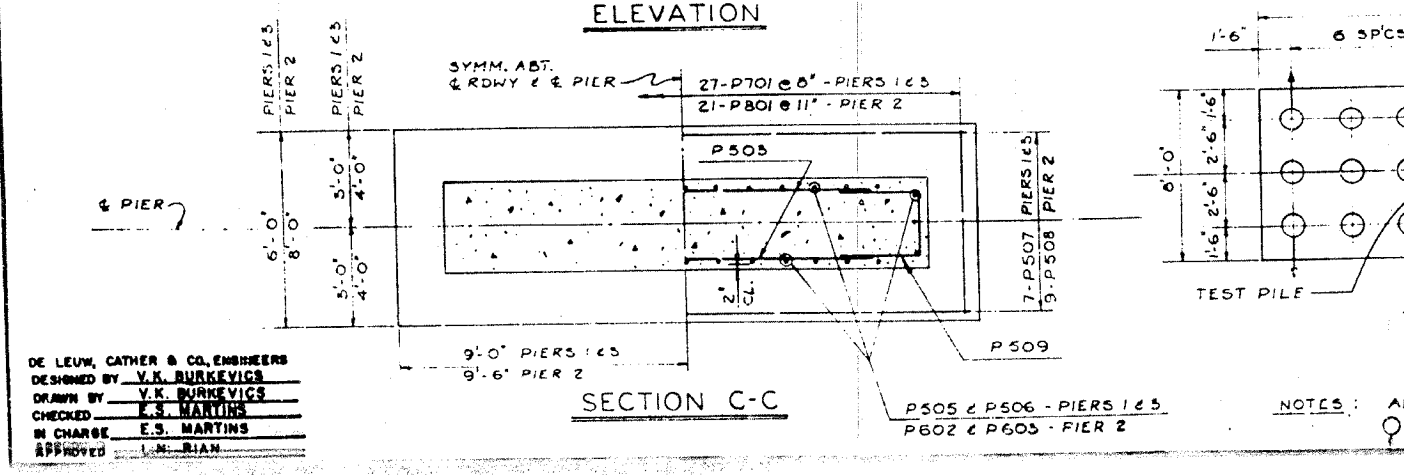
BAR	DIM. B	DIM. C
P401	1'-5"	2'-0"
P402	1'-5"	2'-8"
P403	2'-2"	2'-8"
P504	2'-0"	2'-3 1/4"
P509	2'-0"	3'-3 1/4"
P601	2'-2"	1'-6"

BARS P401, P402, P403, P504, P509 & P601

BAR LIST - 3 PIERS							
BAR	# PIERS 1 & 3	# PIER 2	TOTAL	SIZE	LENGTH	SHAPE	WEIGHT
P401	112	56	168	4	5'-5"	□	608
P402	96	48	144	4	6'-9"	□	649
P403	22	11	33	4	7'-8"	□	163
P501	4	2	6	5	15'-9"	—	99
P502	8	4	12	1	28'-6"	—	357
P503	52	32	84	—	11'-6"	—	1,008
P504	28	16	44	—	6'-7"	□	302
P505	64	—	64	—	15'-6"	—	1,035
P506	64	—	64	—	3'-10"	□	236
P507	14	—	14	—	17'-6"	—	256
P508	8	15	23	—	18'-6"	—	405
P509	24	16	40	1	8'-7"	□	358
P510	15	8	23	5	9'-0"	—	225
P601	12	6	18	6	5'-2"	□	140
P602	—	52	52	6	18'-6"	—	889
P603	—	32	32	6	4'-2"	□	200
P701	34	—	34	7	5'-6"	—	607
P801	—	21	21	8	7'-6"	—	421
P1001	12	6	18	10	28'-6"	—	2,207
P1002	16	—	16	10	15'-5"	□	912
P1101	—	8	8	11	15'-6"	□	574
							TOTAL: 11,673

NOTE: ALL BAR MARKS ARE TO BE PREFIXED FOR SHIPMENT WITH THE NUMBER OF THE PIER WHERE THE BARS WILL BE USED. FOR EXAMPLE: 3P401 MEANS BARS P401 FOR PIER 3. \* USE HALF OF THE NUMBER OF BARS FOR PIERS 1 & 3 IN EACH PIER.

BILL OF MATERIAL - 3 PIERS		
ITEM	UNIT	QUANTITY
CLASS A EXCAVATION FOR STRUCTURES	CU YD	106
CLASS A CONCRETE	CU YD	116.8
REINFORCEMENT BARS	POUND	11,673
FURNISHING CREOSOTED PILES 2010S&FEET	LIN FT	1,468
TEST PILE TIMBER	EACH	1
DRIVING TIMBER PILES	LIN FT	1,468
NAME PLATES	EACH	2



NOTES: ALL PILES ARE CREOSOTED PILES, 20 TON CAPACITY. FOR LENGTHS SEE SH. 7. ○ DENOTES BATTER PILES. BATTER = 2:12

DE LEUW, CATHER & CO. ENGINEERS  
 DESIGNED BY V.K. BURKEVICS  
 DRAWN BY V.K. BURKEVICS  
 CHECKED E.S. MARTINS  
 IN CHARGE E.S. MARTINS  
 APPROVED L.M. BIAN

PIER DETAILS  
 F.A.I. 80 SECTION 37-118-1  
 F.A.I. 80 UNDER S.B.I.-7 (ALT.)  
 HENRY COUNTY  
 STATION 461+72.02  
 SCALE: AS NOTED DATE: