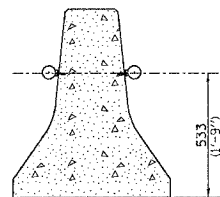
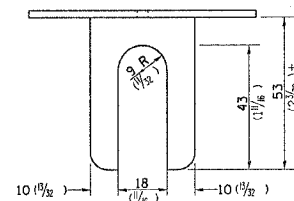


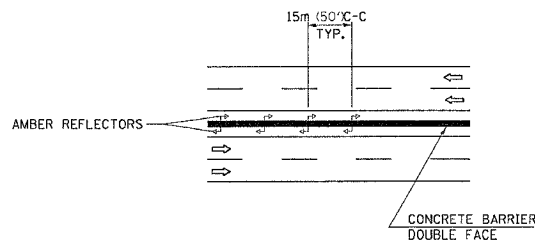
F.A.I. RTE.	SECTION	COUNTY	TOTAL SHEETS	SHEET NO.
80	37-1HBR-1	HENRY	133	100
STA.		TO STA.		
FED. ROAD DIST. NO.		ILLINOIS FED. AID PROJECT		

# BARRIER REFLECTORS

**BARRIER REFLECTOR BRACKET**

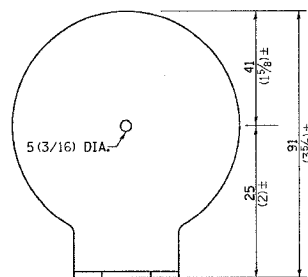


REFLECTOR MOUNTED ON CONCRETE BARRIER

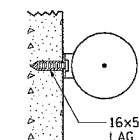
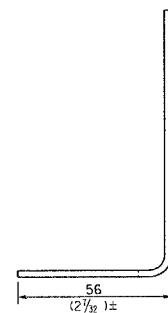


**NOTES:**

- BRACKET TO BE FABRICATED FROM 12 GAUGE (MIN) STEEL GALVANIZED IN ACCORDANCE WITH ASSHTO M III.
- INSTALL AMBER REFLECTORS WITH SPACING OF 15m (50') CENTERS.
- BRACKET SHALL BE PLACED BETWEEN THE BOLT HEAD AND THE PLATE WASHER.
- REFLECTORS SHALL CONFORM TO THE REQUIREMENTS OF SECTION 784.07 OF THE STANDARD SPECIFICATIONS.
- THIS WORK SHALL BE CONSIDERED INCIDENTAL TO UNIT COST OF CONCRETE BARRIER.
- ALL DIMENSIONS ARE IN MILLIMETERS (INCHES) UNLESS OTHERWISE NOTED.



CIRCULAR SHAPE 83 (3 1/4) DIA.

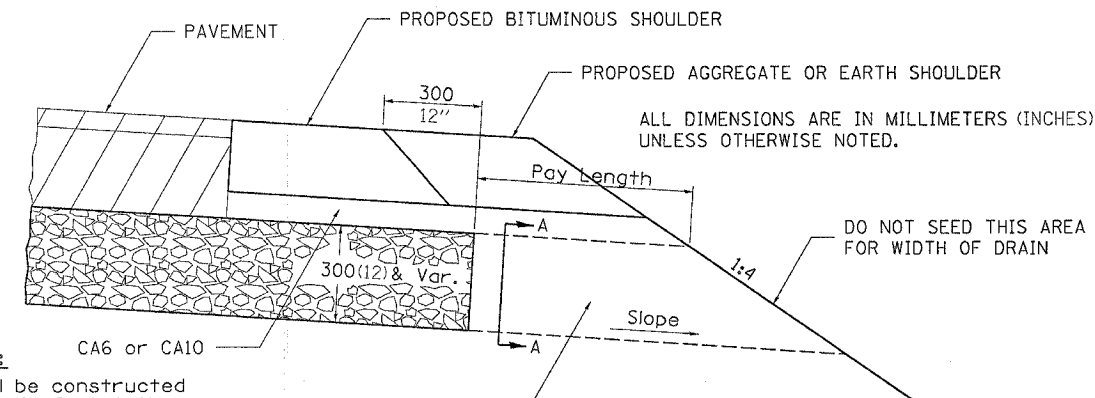


TYPICAL MOUNTING WITH REFLECTOR, BRACKET, & BOLT

## BARRIER REFLECTORS 92.4

REVISED 10-15-04

# DRAIN FOR AGGREGATE BASE COURSE

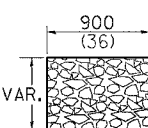


ALL DIMENSIONS ARE IN MILLIMETERS (INCHES) UNLESS OTHERWISE NOTED.

DO NOT SEED THIS AREA FOR WIDTH OF DRAIN

**NOTES:**

- The rock outlets shall be constructed using CA7 and will be paid for at the contract unit price per m<sup>2</sup> (SQ. YD.) for DRAIN FOR AGGREGATE BASE COURSE. The thickness shall be the same as the adjacent sub-base material as noted on the plans and shall include the cost of the filter fabric. The Rock outlets will be measured in m<sup>2</sup> (SQ. YD.), the width being 900 (36) by the length shown above. The cost of the CA6 or CA10 under the shoulder shall be included in the contract unit price per m<sup>2</sup> (SQ. YD.) for SUB-BASE GRANULAR MATERIAL, TYPE A of the thickness specified. The filter fabric to be used shall conform to the filter fabric used for Riprap.



SECTION A-A

NOTE: Slope same as shoulder with 2% min.

## DRAIN FOR AGGREGATE BASE COURSE 96.4

REVISED 6-5-06