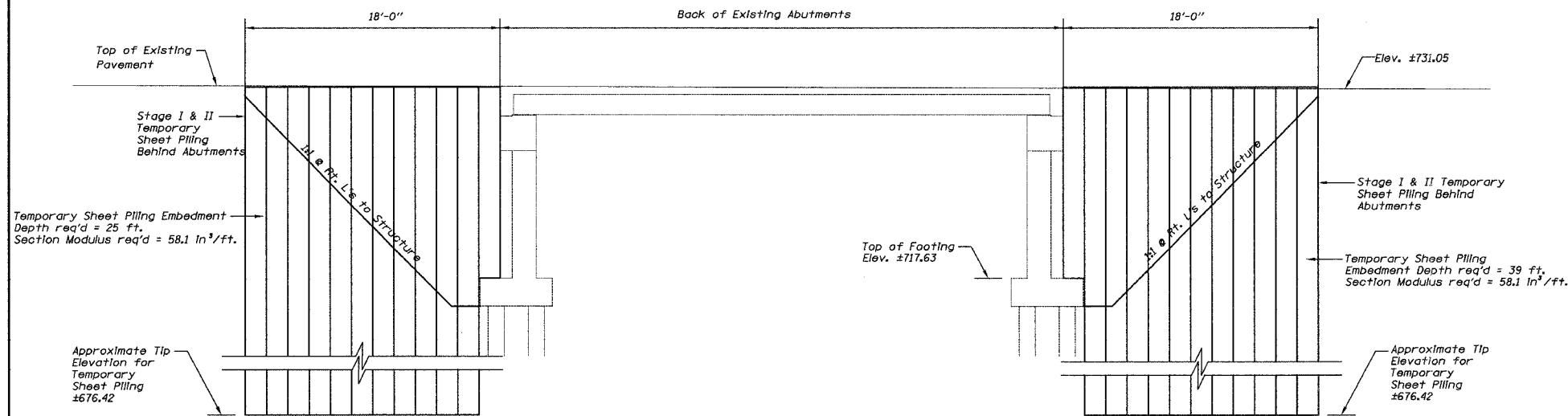


STATE OF ILLINOIS
DEPARTMENT OF TRANSPORTATION

ROUTE NO.	SECTION	COUNTY	SHEET NO.	SHEET NO.
FAP 505	115 BR-1	WINNEBAGO	35	12
FEL ROAD DIST. NO.	ALIGNED	FEL. AND PROJECT		

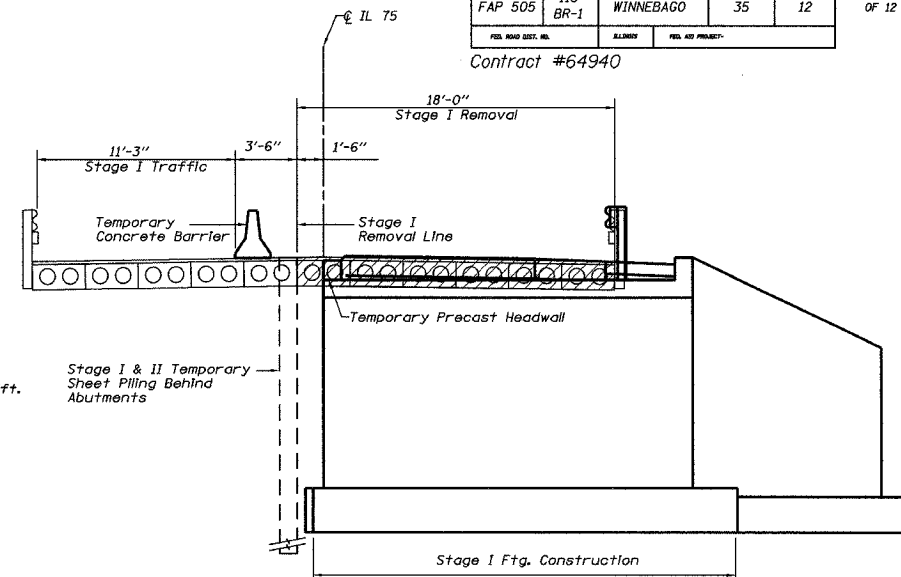
SHEET NO. 3
OF 12 SHEETS

Contract #64940



STAGE I TEMPORARY SHEET PILING

Looking North



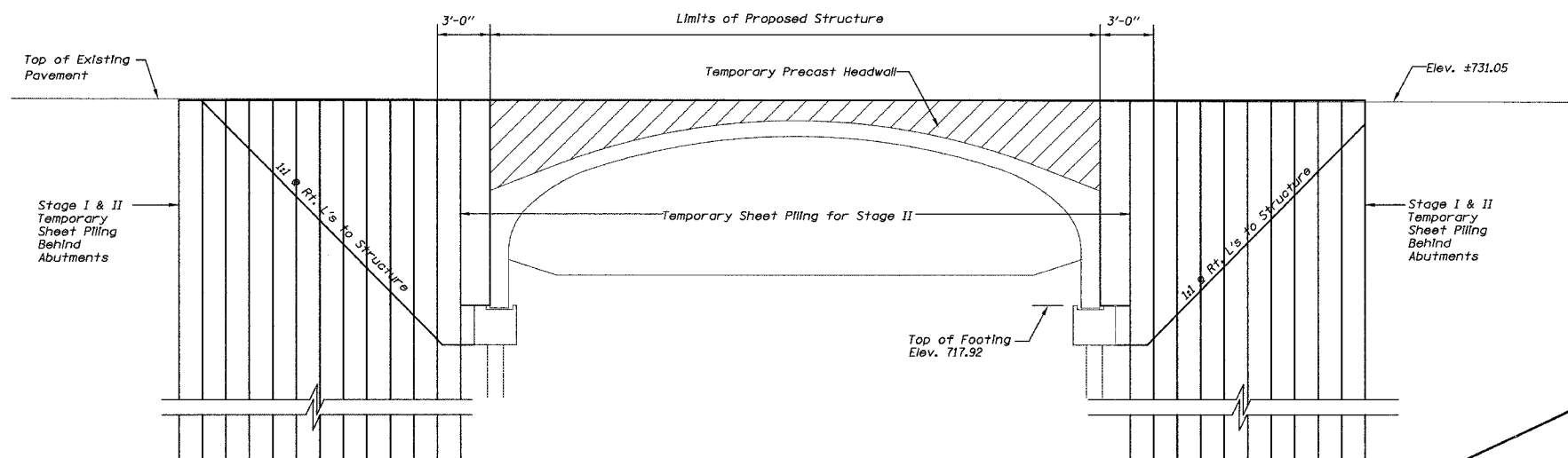
STAGE I

Looking up Station
(Dimensions are at Rt. L's to Roadway unless noted)

Notes:
Because the existing abutments are restrained top and bottom, excavating the soil behind, or bracing the existing abutments shall be required prior to removing the existing bridge superstructure.

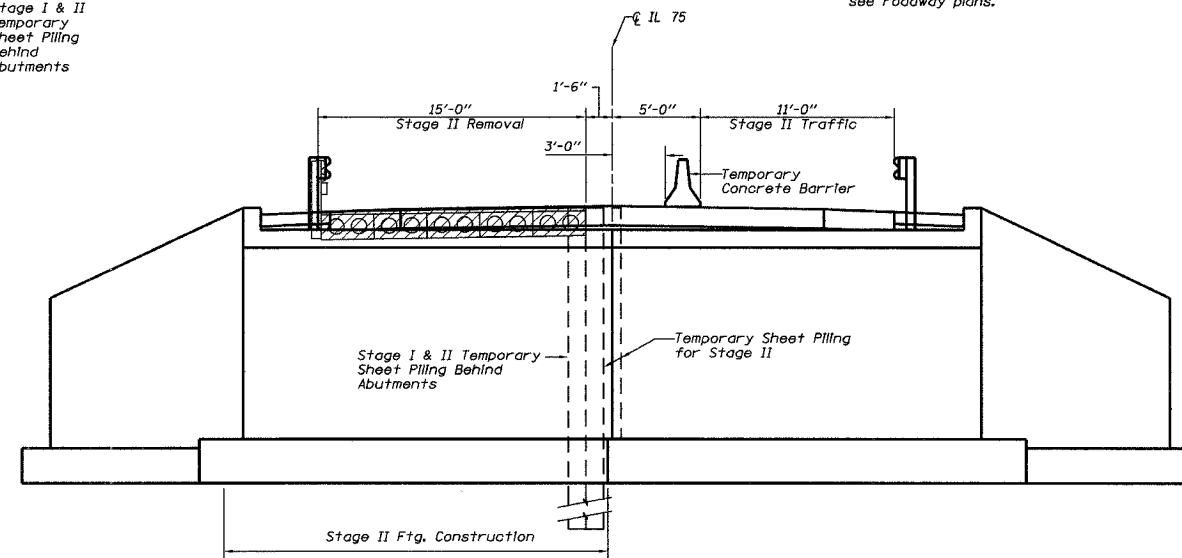
For details of temporary concrete barrier see sheet 9 of 12.

For quantity of temporary concrete barrier see roadway plans.



STAGE II TEMPORARY SHEET PILING

Looking North

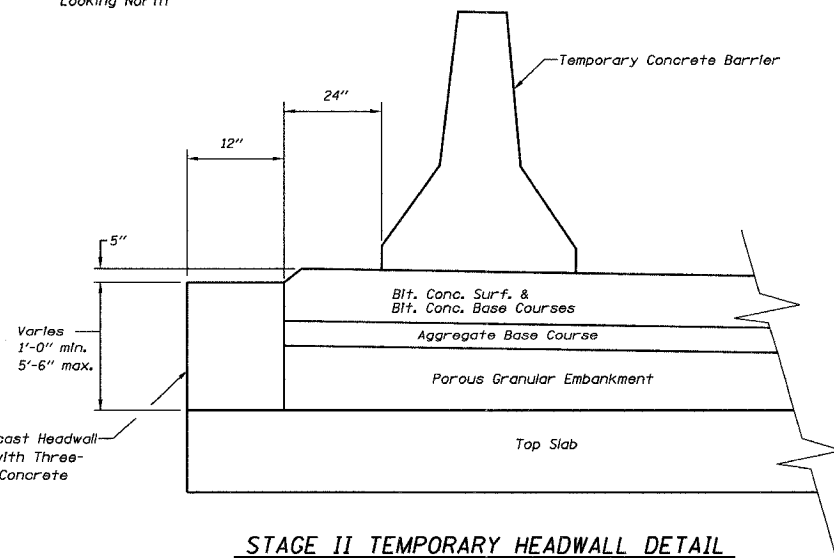


STAGE II

Looking up Station
(Dimensions are at Rt. L's to Roadway unless noted)

Notes:
If the Contractor chooses to alter the temporary cantilevered sheet piling design requirements shown on the plans, a design submittal including plan details and calculations will be required for review and acceptance by the Engineer. The contractor shall connect the first sheet to the existing abutment wall to ensure stability of sheets driven to the top of the existing footing. This connection shall be reviewed and accepted by the Engineer and included in the cost for Temporary Sheet Piling.

The Temporary Precast Headwall design and attachment details shall be the responsibility of the Precast Producer. Drilling and grouting bars into the precast unit will not be allowed. Cost included with Three-Sided Precast Concrete Structures.



STAGE II TEMPORARY HEADWALL DETAIL

DESIGNED	JLS
CHECKED	JDA
DRAWN	NOE
CHECKED	JLS

STAGE CONSTRUCTION DETAILS
IL RTE 75 OVER
TIMOTHY CREEK
FAP ROUTE 505
SECTION 115BR-1
WINNEBAGO COUNTY
STA. 63+23.20
SN 101-0183