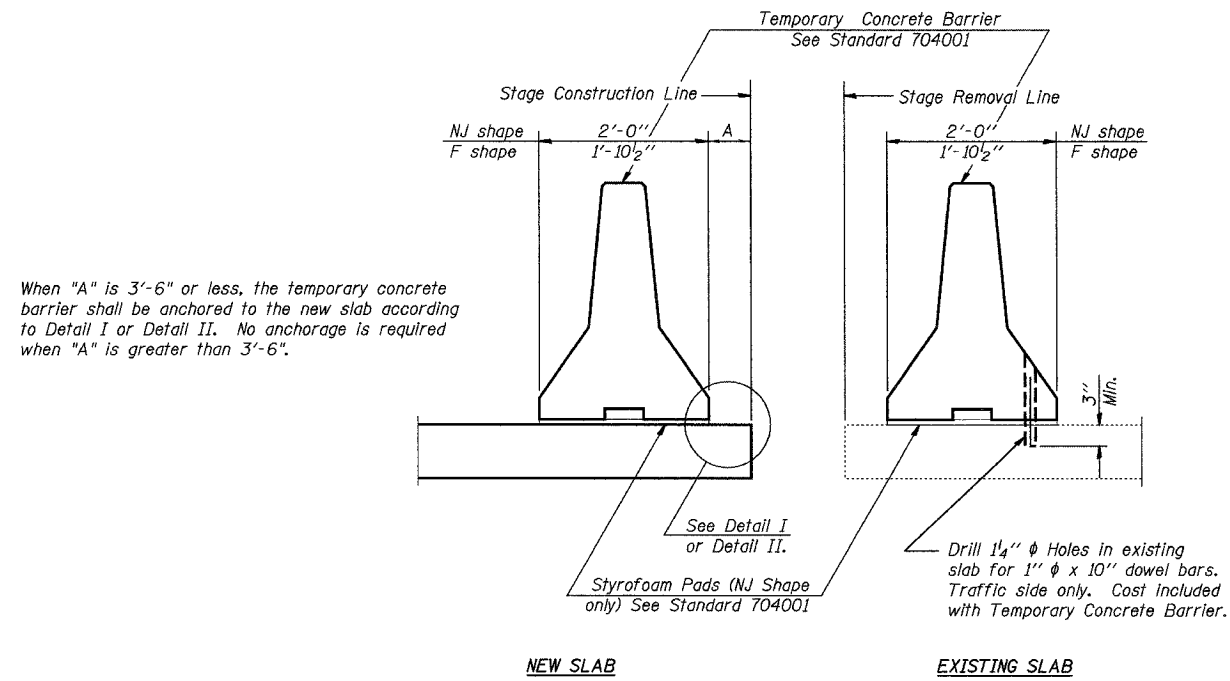


STATE OF ILLINOIS  
DEPARTMENT OF TRANSPORTATION

ROUTE NO.	SECTION	COUNTY	SHEET NO.	SHEET
FAP 505	115 BR-1	WINNEBAGO	35	18
FED. ROAD DIST. NO.	ALIGNED	FED. AID PROJECT		

Contract #64940

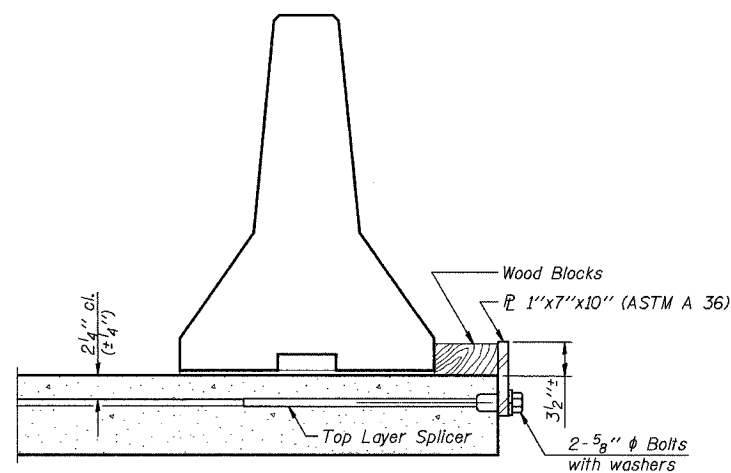
SHEET NO. 9  
OF 12 SHEETS



SECTIONS THRU SLAB

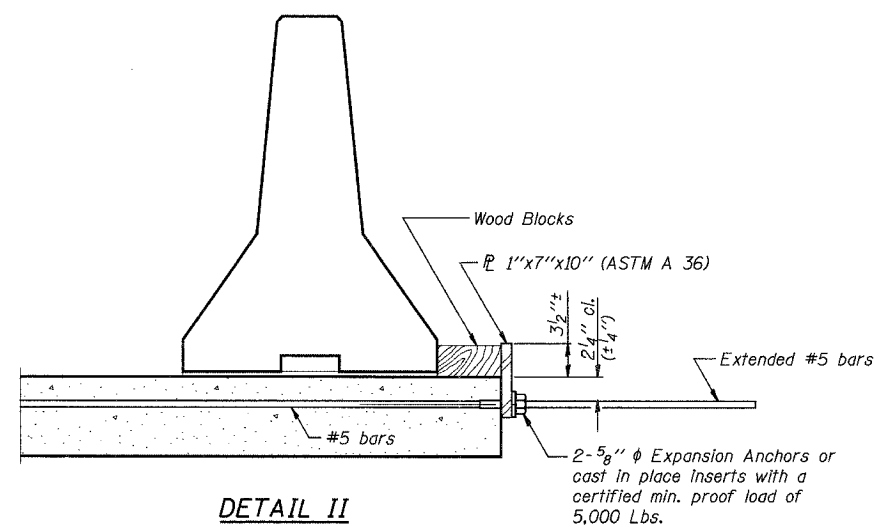
NOTES

- Detail I - With Bar Splicer or Couplers:  
Connect one (1) 1"x7"x10" steel  $\bar{P}$  to the top layer of couplers with 2-5/8"  $\phi$  bolts screwed to coupler at approximate  $\bar{C}$  of each barrier panel.
- Detail II - With Extended Reinforcement Bars:  
Connect one (1) 1"x7"x10" steel  $\bar{P}$  to the concrete slab with 2-5/8"  $\phi$  Expansion Anchors or cast in place Inserts spaced between the top layer of reinforcement at approximate  $\bar{C}$  of each barrier panel.  
Cost of anchorage is included with Temporary Concrete Barrier.



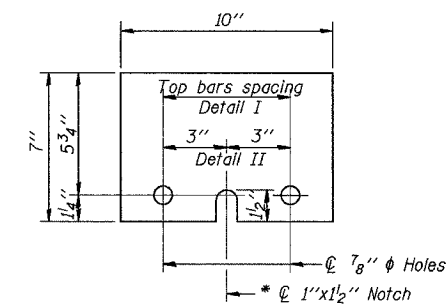
DETAIL I

The 1"x7"x10" Plate shall not be removed until Stage II Construction forms and reinforcement bars are in place.



DETAIL II

The 1"x7"x10" Plate shall not be removed until Stage II Construction forms and all reinforcement bars are in place and the concrete is ready to be placed.



1"x7"x10"

\* Required only with Detail II

DESIGNED	JLS
CHECKED	JDA
DRAWN	NOE
CHECKED	JLS

R-27

10-22-04

TEMPORARY CONCRETE BARRIER DETAILS  
IL RTE 75 OVER  
TIMOTHY CREEK  
FAP ROUTE 505  
SECTION 115BR-1  
WINNEBAGO COUNTY  
STA. 63+23.20  
SN 101-0183