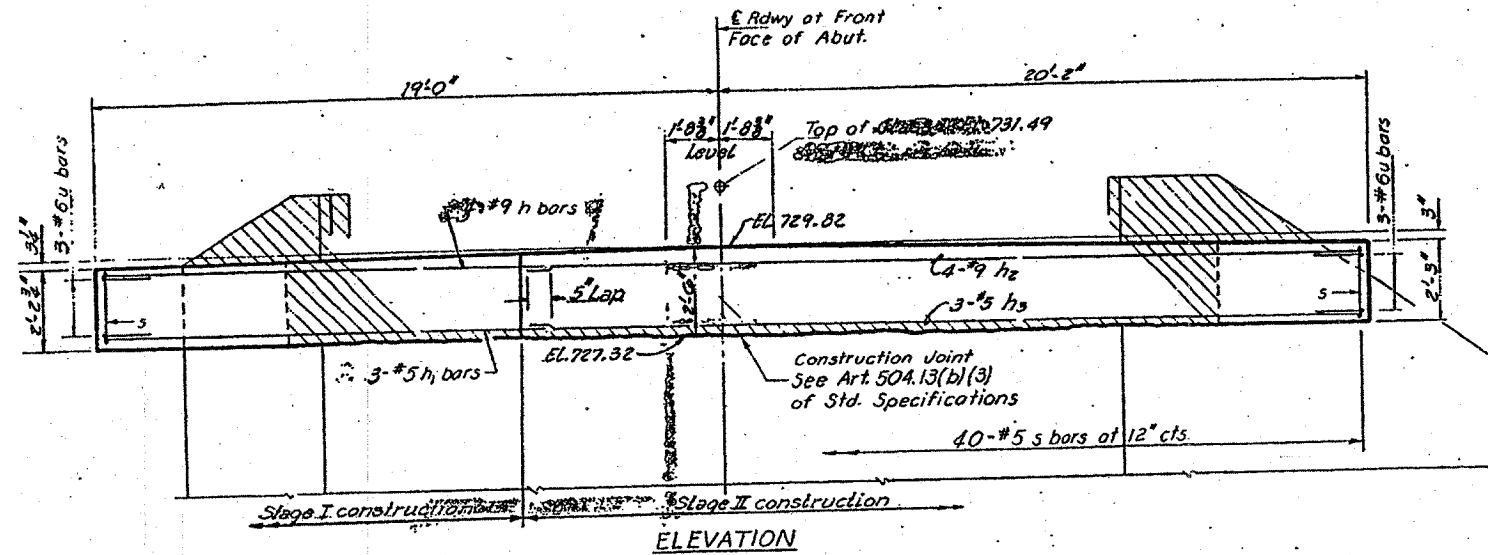
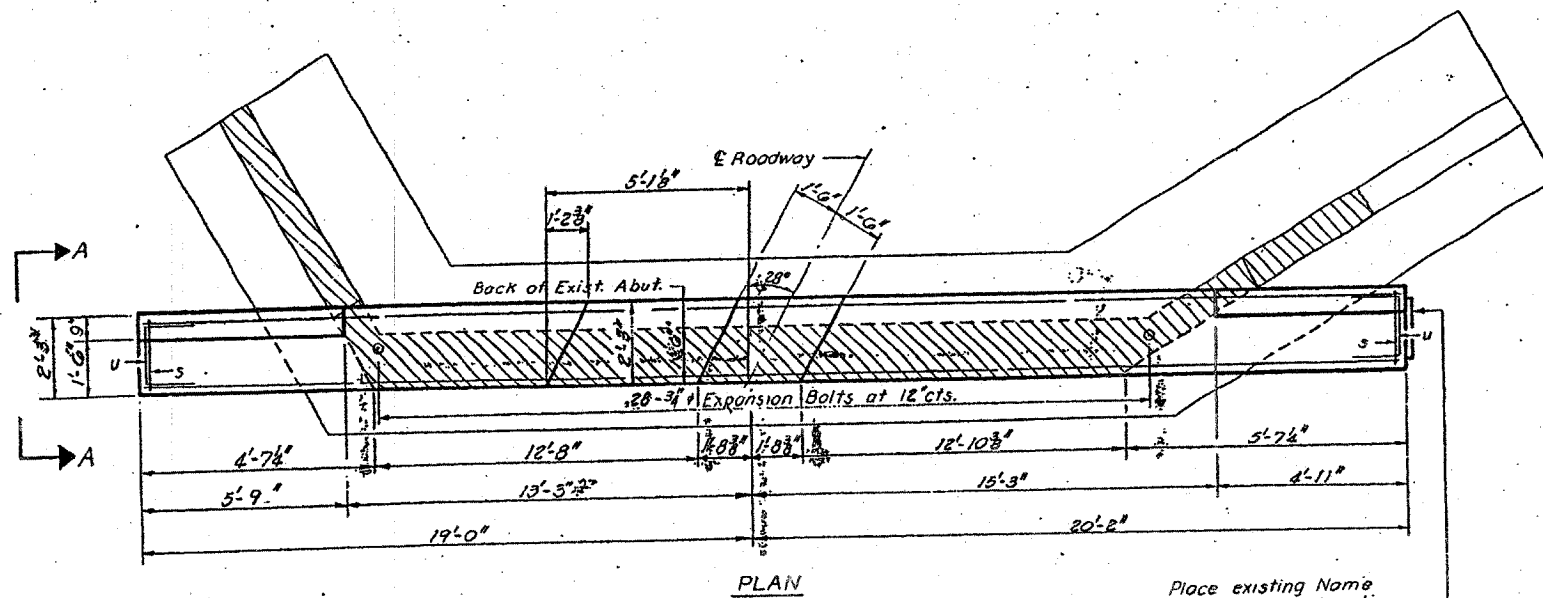


STATE OF ILLINOIS

PROJECT NO.	DISTRICT	CONTRACT	SHEET NO.	TOTAL SHEETS
75	1152A	WINNEBAGO	8	7
SHEET NO. 5 6 SHEETS				

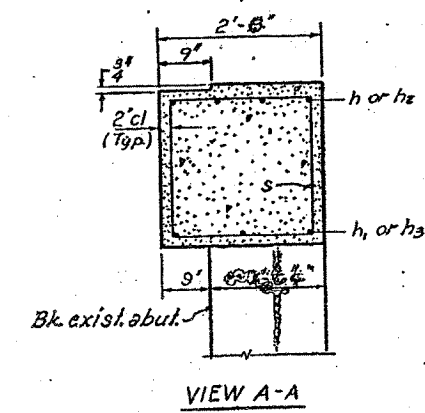


FOR INFORMATION ONLY



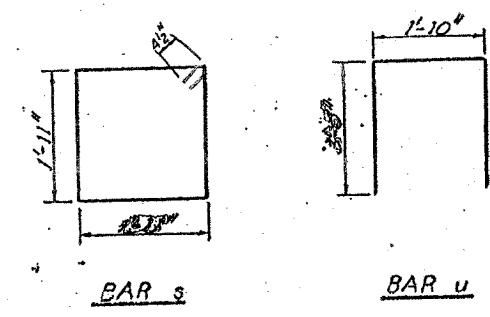
Place existing Name Plate at this location
Cost Incidental

Notes:
Hatched area indicates Concrete Removal. Reinforcement extending into removed area shall be cleaned and incorporated into the new construction.
Expansion Bolts shall be anchored in sound concrete.
All edges shall have standard 3/4 chamfers



BILL OF MATERIAL

Bar	No.	Size	Length	Shape
h	4	#9	14'-3"	—
h ₁	3	#5	14'-3"	—
h ₂	4	#9	23'-9"	—
h ₃	3	#5	23'-9"	—
s	40	#5	8'-5"	□
u	6	#6	7'-10"	□
Class X Concrete			Cu. Yds.	7.4
Reinforcement Bars			Lbs.	1060
Expansion Bolts			Each.	28
Concrete Removal			Cu. Yds.	4.9



WEST ABUTMENT
S.B.T. RT. 75 SEC. 115 BK
WINNEBAGO COUNTY
STATION 70+58

DESIGNED *Don McCombs*
CHECKED *Murphy*
APPROVED *R. P. ...*

EXAMINED *[Signature]*
PASSED *[Signature]*
APPROVED BY DESIGN *[Signature]*

APR 27 1971