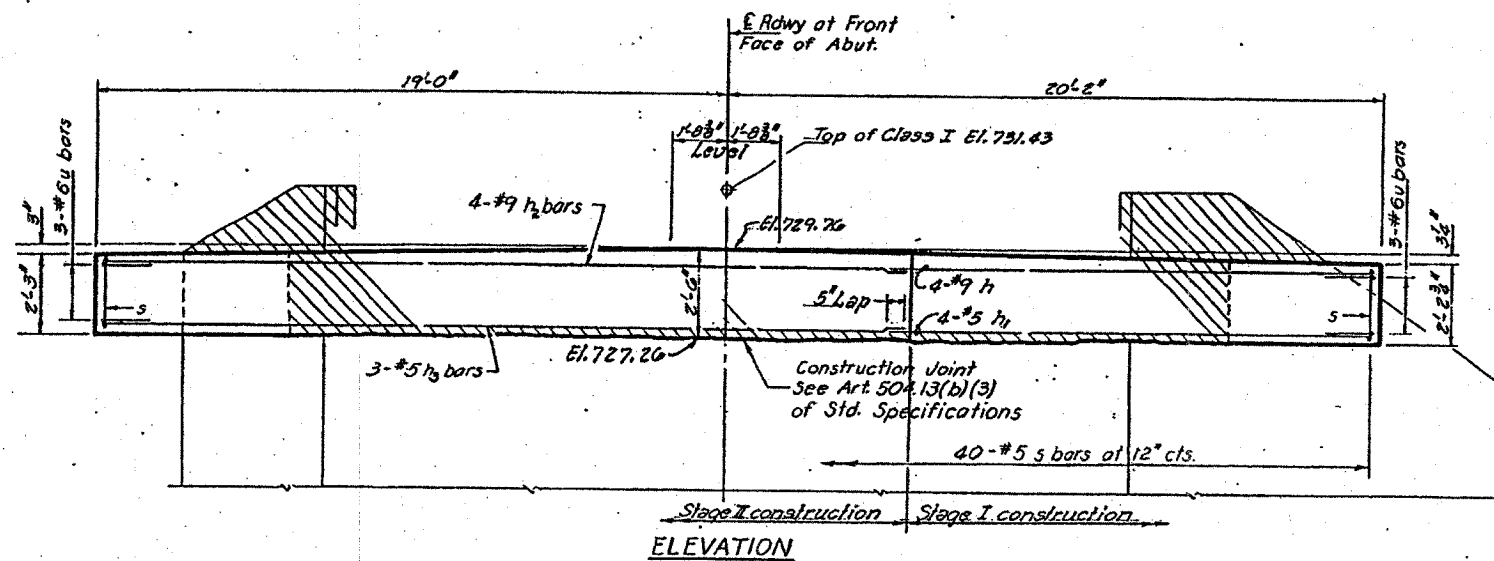
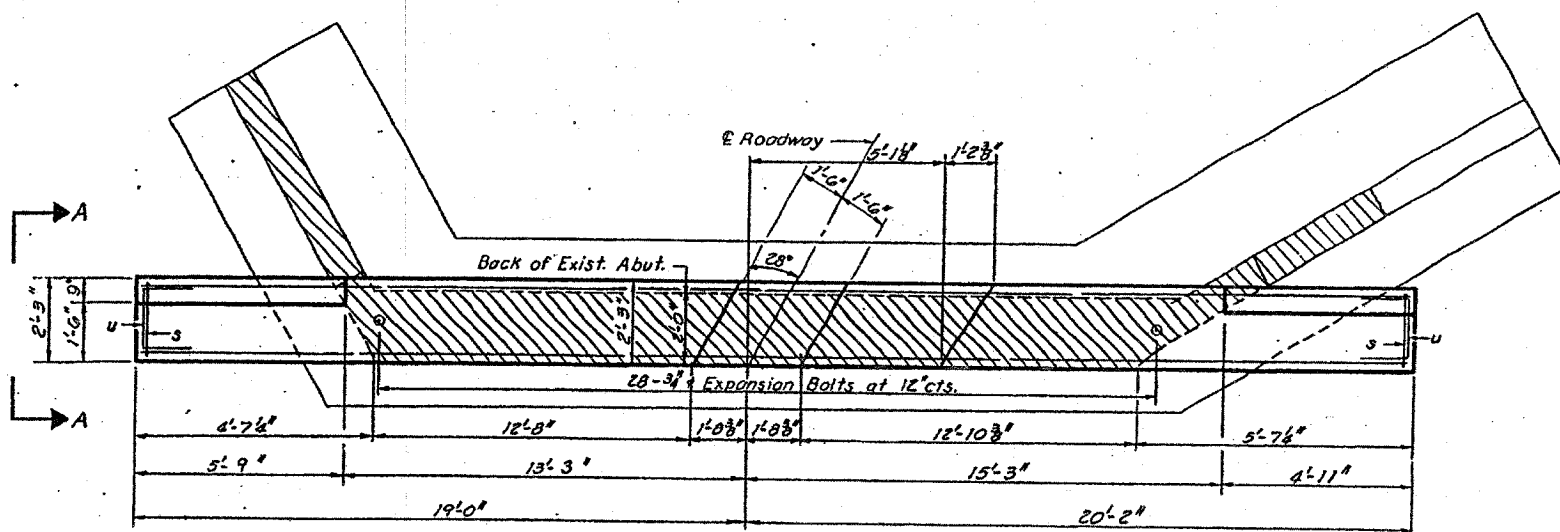


STATE OF ILLINOIS

DATE	NO.	BY	CHKD.	BY	DATE
1971	11288	WINNEBAGO	8	8	
SHEET NO. 6					
0 SHEETS					



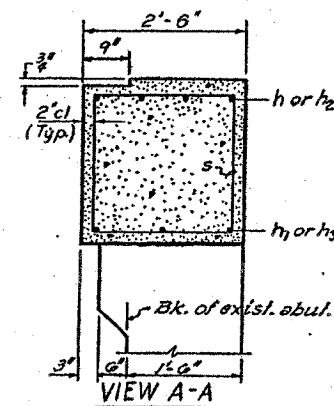
ELEVATION



PLAN

Notes:  
 Hatched area indicates Concrete Removal. Reinforcement extending into removed area shall be cleaned and incorporated into the new construction.  
 Expansion Bolts shall be anchored in sound concrete.  
 All edges shall have standard 3/4 chamfers.

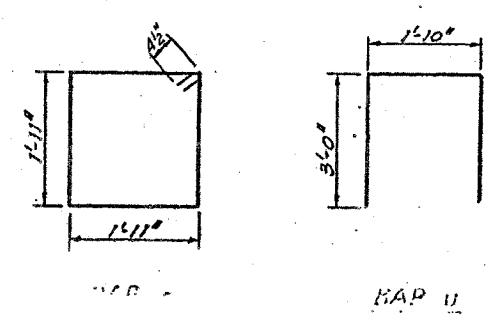
FOR INFORMATION ONLY



VIEW A-A

**BILL OF MATERIAL**

Bar	No.	Size	Length	Shape
h1	4	#9	14'3"	—
h2	3	#5	14'3"	—
h3	4	#9	23'9"	—
h4	3	#5	23'9"	—
s	40	#5	8'5"	□
u	6	#6	7'10"	□
Class X Concrete		Cu. Yds.	7.4	
Reinforcement Bars		Lbs.	1060	
Expansion Bolts		Each	28	
Concrete Removal		Cu. Yds.	5.5	



CHAMFER

DESIGNED: *James McLaughlin*  
 CHECKED: *Arthur J. ...*  
 EXAMINED: *[Signature]* April 27 1971  
 PASSED: *[Signature]*

**EAST ABUTMENT**  
 COUNTY