

F.A.P. RTE.	SECTION	COUNTY	TOTAL SHEETS	SHEET NO.
301	(2,3,4)RS	WINNEBAGO	48	1

D-92-071-04

STATE OF ILLINOIS
DEPARTMENT OF TRANSPORTATION
DIVISION OF HIGHWAYS

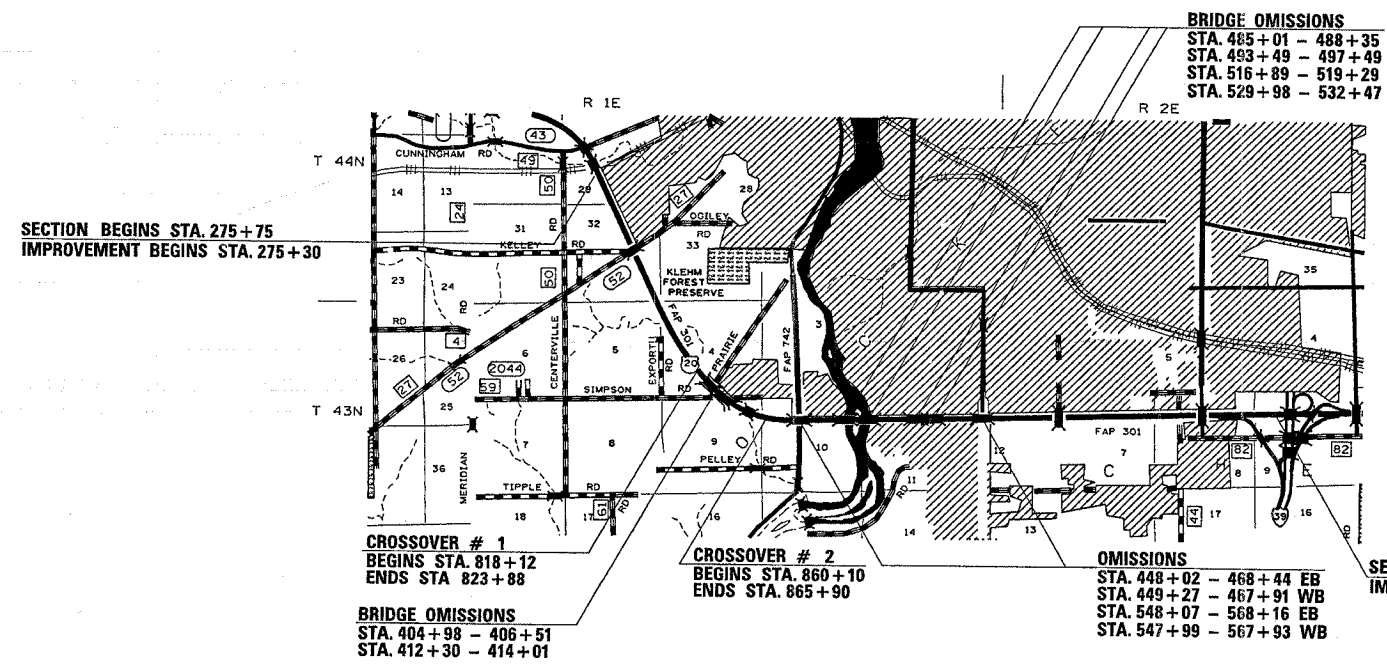
PROPOSED HIGHWAY PLANS

F.A.P. ROUTE 301 (US 20)
SECTION (2,3,4)RS
PROJECT NHF-0301(039)
WINNEBAGO COUNTY
C-92-111-04

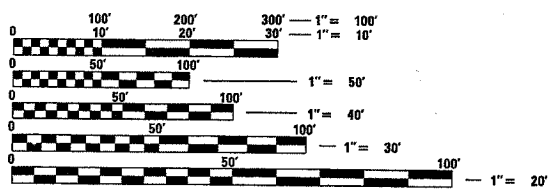


FOR INDEX OF SHEETS, SEE SHEET NO. 2
FOR STATE STANDARDS, SEE SHEET NO. 2

ADT = 33100
PV = 28400
MU = 3400
SU = 1300



TOWNSHIP (SECTION): NW ROCKFORD (29,32,33)
SW ROCKFORD (4,5,9,10,11,12)
CHERRY VALLEY (7,8,9)



FULL SIZE PLANS HAVE BEEN PREPARED USING STANDARD ENGINEERING SCALES. REDUCED SIZED PLANS WILL NOT CONFORM TO STANDARD SCALES. IN MAKING MEASUREMENTS ON REDUCED PLANS, THE ABOVE SCALES MAY BE USED.

J.U.I.E.
JOINT UTILITY LOCATION INFORMATION FOR EXCAVATION
1-800-892-0123

GROSS LENGTH OF PROJECT - 43181' = 8.18 MILES
NET LENGTH OF PROJECT EB - 37583 = 7.12 MILES
NET LENGTH OF PROJECT WB - 37776 = 7.15 MILES

Steven P. Fessenbecker
STEVEN P. FESSENBECKER, P.E.
LIC. NO. 062-051254
EXPIRES 11/30/2007
(SEAL FOR CROSSEVERS ONLY)

KUDRNA & ASSOCIATES, LTD.
400 South Green Street - Suite 304
Chicago, Illinois 60607
Phone (312) 738-1522
Fax (312) 738-9792
203 North Cass Avenue
Westmont, Illinois 60559
Phone (630) 969-3060
Fax (630) 969-3122

STATE OF ILLINOIS
DEPARTMENT OF TRANSPORTATION
DIVISION OF HIGHWAYS

SUBMITTED *October 17, 2006*

Joseph E. Brennan
DEPUTY DIRECTOR OF HIGHWAYS, REGION ENGINEER

December 8, 2006

Eric E. Hamrick
INTERIM ENGINEER OF DESIGN AND ENVIRONMENT

December 8, 2006

Milton R. Serr, P.E.
DIRECTOR OF HIGHWAYS, CHIEF ENGINEER

Kudrna & Associates, LTD.
Illinois Professional Design Firm
License No. 184-000920
Expires 4/30/2007

PRINTED BY THE AUTHORITY
OF THE STATE OF ILLINOIS

PROJECT ENGINEER: BOB WAGNER
SQUAD TECHNICIAN: LANCE NICKLAUS (815) 284-5920
KUDRNA CONTACT FOR CROSSEVERS ONLY
STEVEN FESSENBECKER (603) 969-3060