



Illinois Department of Transportation

2300 South Dirksen Parkway / Springfield, Illinois / 62764

January 5, 2007

SUBJECT: Various Routes
Section D2 MCHD (North) 2007
Various Counties
Contract No. 64C41
Item No. 46, January 19, 2007 Letting
Addendum A

NOTICE TO PROSPECTIVE BIDDERS:

Attached is an addendum to the plans or proposal. This addendum involves revised and/or added material.

1. Added sheets 14A – 14E to the Fold Up Plans.

Prime contractors must utilize the enclosed material when preparing their bid and must include any Schedule of Prices changes in their bidding proposal.

Bidders using computer-generated bids are cautioned to reflect any and all Schedule of Prices changes, if involved, into their computer programs.

Very truly yours,

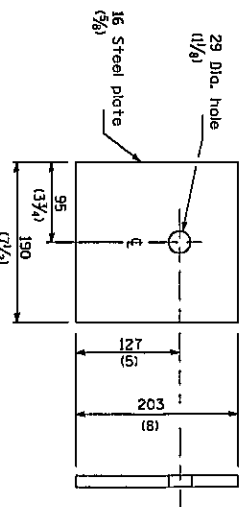
Eric E. Harm
Interim Bureau Chief
Bureau of Design and Environment

A handwritten signature in cursive script, reading "Ted B. Walschleger P.E.", with a small "P.E." to the right.

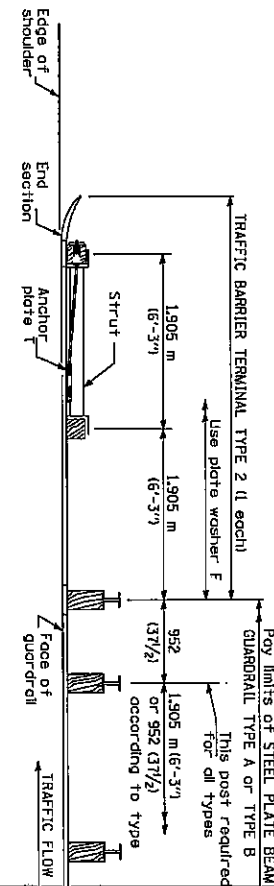
By: Ted B. Walschleger, P. E.
Engineer of Project Management

cc: J. E. Crowe, Dep. Dir. Highways, Dist 2 Engineer; Roger Driskell;
Estimates; Design & Environment File

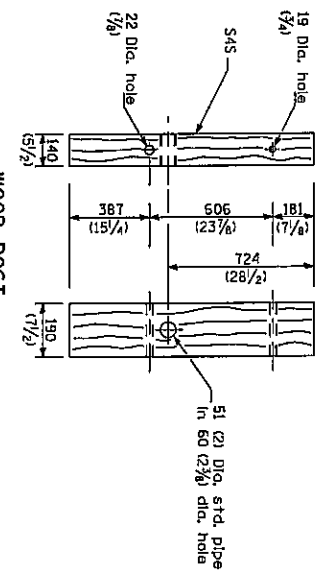
TBW:RS:jc



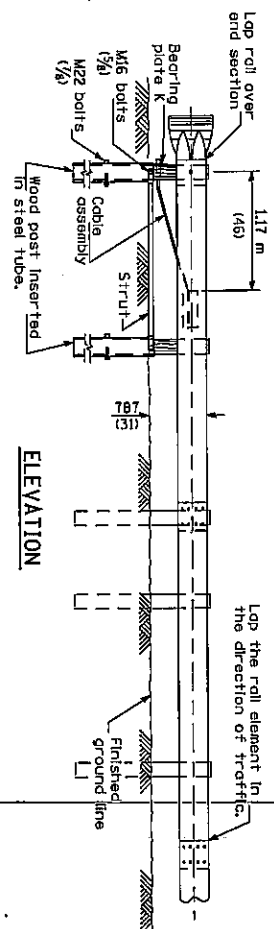
BEARING PLATE K



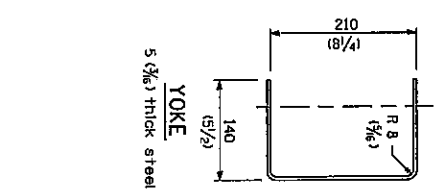
PLAN



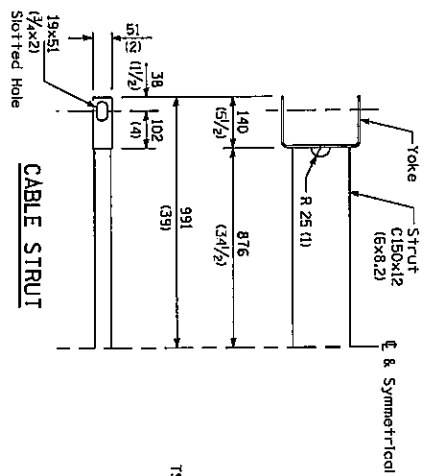
WOOD POST



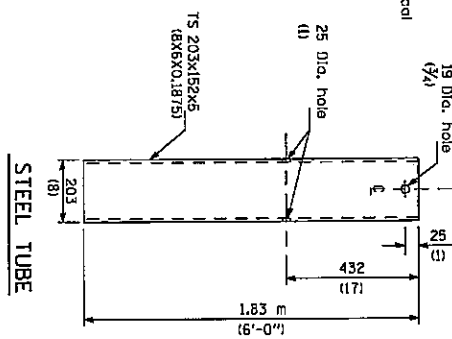
ELEVATION



YOKE
5 (3/16) thick steel



CABLE STRUT



STEEL TUBE

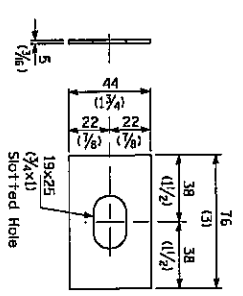


PLATE WASHER F

GENERAL NOTES

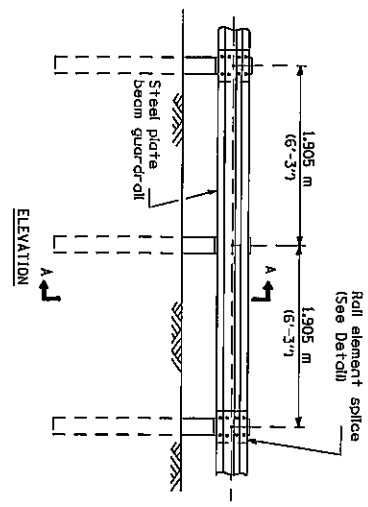
See Standard S3001 for details of guardrail not shown.
The bearing plate K shall be held in position by (2) two eight penny nails driven into the post and bent over the top of the plate.
All dimensions are in millimeters (inches) unless otherwise shown.

TRAFFIC BARRIER TERMINAL, TYPE 2

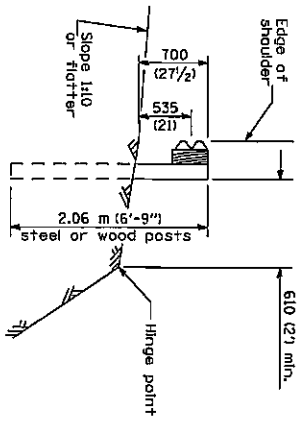
DETAIL

DATE	6/24/11
SHEET	14A
NO. OF SHEETS	14A
DESIGNER	
CHECKER	
DATE	
PROJECT	

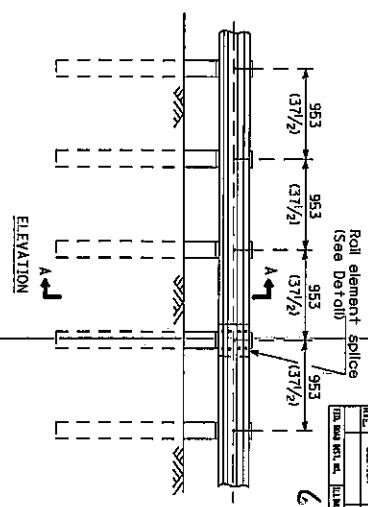
△ - Added 01-04-2007



Roll element splice (See Detail)
1,905 m (6'-3") Typical post spacing



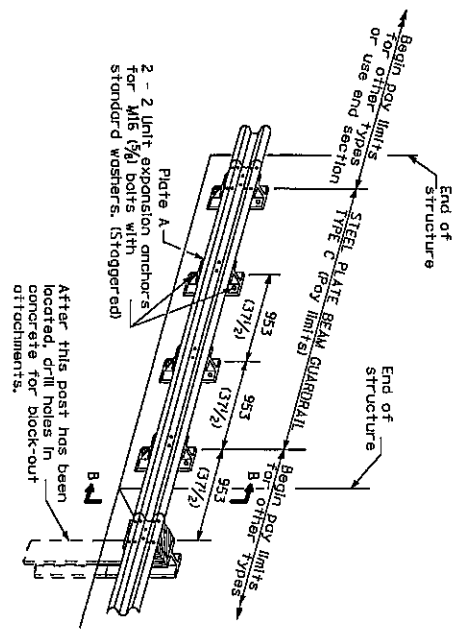
SECTION A-A



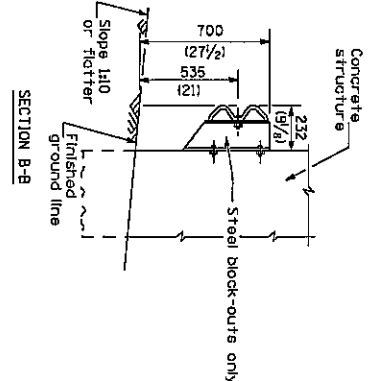
Roll element splice (See Detail)
953 (31 1/2) closed post spacing

REV.	SECTION	DATE	BY	CHECKED
1	SECTION	11/20/07	143	

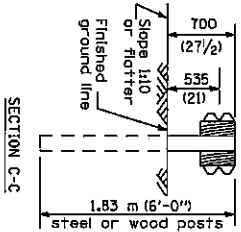
64C41



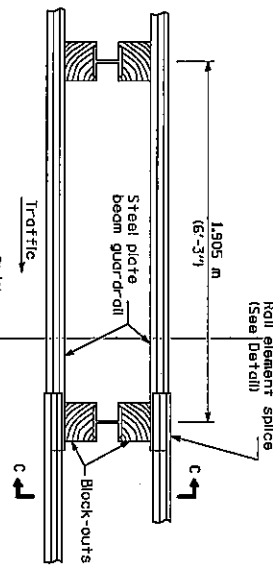
TYPE C
953 (31 1/2) Block-out spacing



SECTION B-B



SECTION C-C



TYPE D
Double steel plate beam guard-rail
1,905 m (6'-3") Typical post spacing

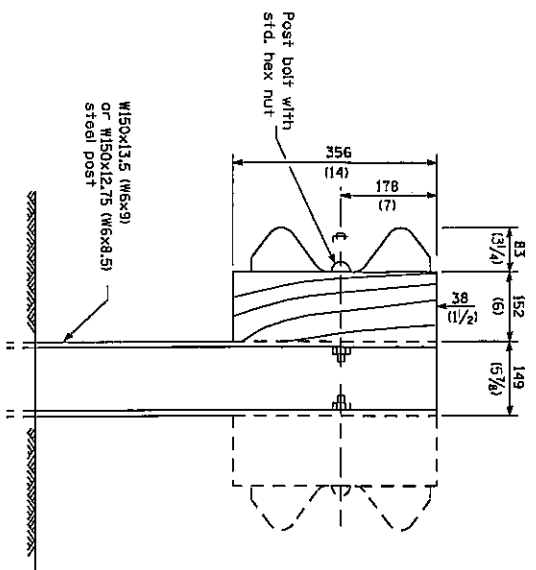
GENERAL NOTES

All slope ratios are expressed as units of vertical displacement to units of horizontal displacement (V:H).
All dimensions are in millimeters (inches) unless otherwise shown.
The existing steel posts may be drilled to match the bolt pattern shown herein for the wood block-out, or a new steel post shall be provided.

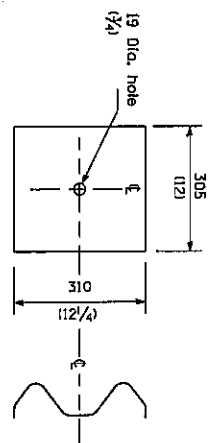
REMOVE AND REERECT
STEEL PLATE BEAM GUARDRAIL
(Sheet 1 of 4)

DETAIL

Added 01-04-2007

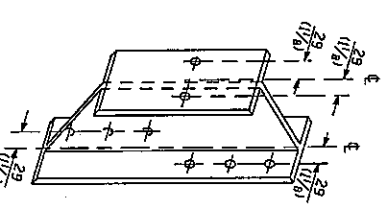


STEEL POST CONSTRUCTION

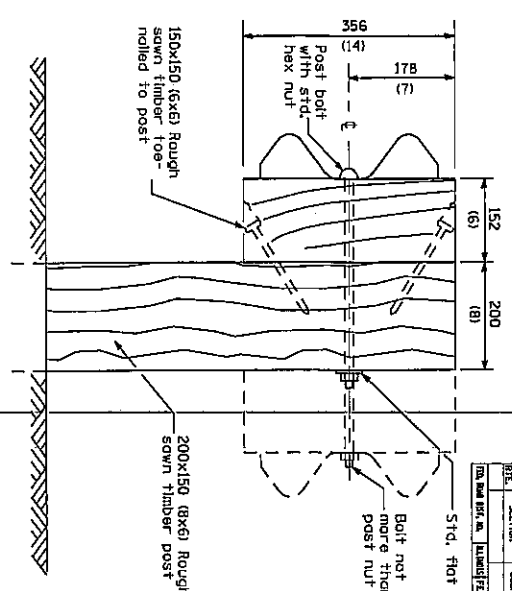


NOTE
Plate A shall be placed between roll element and block-out at non-splice mounting points only when steel block-outs are used.

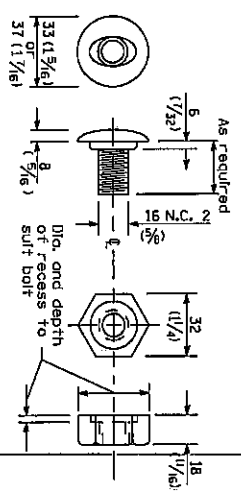
PLATE A



STEEL BLOCK-OUT DETAIL



WOOD POST CONSTRUCTION



POST OR SPLICE BOLT & NUT

REV.	SECTION	QUANTITY	TOTAL HEIGHT
1	1	1	1

6424

REMOVE AND REERECT
STEEL PLATE BEAM GUARDRAIL
DETAIL
(Sheet 2 of 4)

A-Added 01-04-2007

