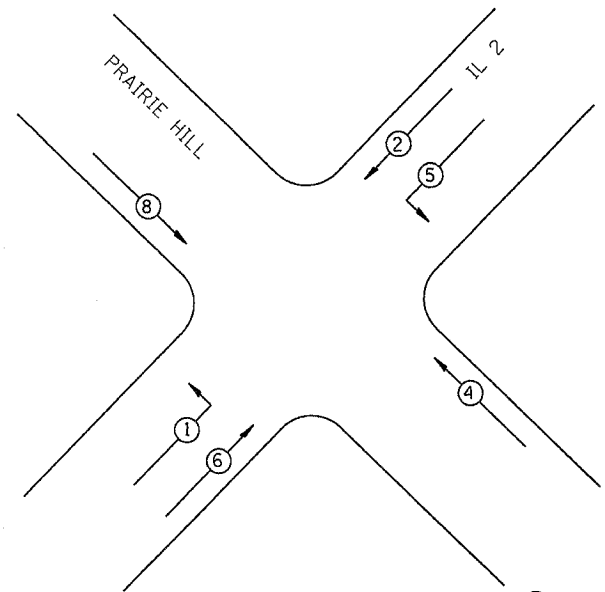


F.A.P. RTE.	SECTION	COUNTY	TOTAL SHEETS	SHEET NO.
734	(77-1)TS-3	WINNEBAGO	10	8
STA.		TO STA.		
FED. ROAD DIST. NO.	ILLINOIS	FED. AID PROJECT		

# IL 2 UNION ST CABLE DETAIL



## PHASE DESIGNATION DIAGRAM



← ② → VEHICULAR MOVEMENT

NUMBER REFERS TO ASSOCIATED PHASE

REFER TO STANDARD 857001

LEGEND  
INDICATES NUMBER OF NEW CONDUCTORS.  
ALL CABLE IS NO. 14 EXCEPT AS INDICATED.  
"P" INDICATES PAIR CABLE



NEW SIGNAL HEAD WITH OR WITHOUT BACKPLATE



RETROFIT EXISTING SIGNAL HEAD WITH LED WITH OR WITHOUT BACKPLATE



NEW COUNTDOWN PEDESTRIAN HEAD - LED



PEDESTRIAN PUSHBUTTON



LUMINAIRE, 250 WATT



EXISTING DETECTION CABLES

DETECTOR ASSIGNMENT		
DETECTOR	PHASE NO.	DIRECTION
A	8	WB PRESENT
B	4	EB PRESENT
C	6	IL 2 NB FAR ADVANCE
D	6	IL 2 NB PRESENT
E	1	IL 2 NB LEFT
F	2	IL 2 SB FAR ADVANCE
G	2	IL 2 SB PRESENT
H	5	IL 2 SB LEFT

REVISIONS	
NAME	DATE

ILLINOIS DEPARTMENT OF TRANSPORTATION

SCALE: VERT. / HORIZ. / DATE

DRAWN BY / CHECKED BY

## IL 2 UNION ST - SIGNAL CABLE DETAIL

PLT DATE = Mon Oct 23 10:18:55 2006  
 PLT SCALE = 20.0000 7 IN.  
 USER NAME = h11141

