

FAP RTE	SECTION	COUNTY	TOTAL SHEET
635	105 BR-2	KANKAKEE	25
F.A.M.A. REG. 5 ILLINOIS PROJECT			1

D-93-052-04
P-93-040-03

INDEX OF SHEETS

- 1 COVER SHEET & HIGHWAY STANDARDS
- 2 GENERAL NOTES
- 3-4 SUMMARY OF QUANTITIES
- 5-6 TYPICAL SECTIONS
- 7-8 SCHEDULES
- 9-10 PLAN & PROFILE
- 11-13 STAGE CONSTRUCTION & TRAFFIC CONTROL
- 14 BORING LOGS
- 15-17 EXISTING STRUCTURE
- 18-22 DETAILS
- 23-25 CROSS SECTIONS

HIGHWAY STANDARDS

- 000001-04 STANDARD SYMBOLS, ABBREVIATIONS AND PATTERNS
- 280001-03 TEMPORARY EROSION CONTROL SYSTEMS
- 701001-01 OFF-ROAD OPERATIONS 2L, 2W, MORE THAN 4.5 m (15') AWAY
- 701006-02 OFF-ROAD OPERATIONS 2L, 2W, 4.5 m (15') TO 600 mm (24") FROM PAVEMENT EDGE
- 701011-01 OFF-ROAD MOVING OPERATIONS 2L, 2W, DAY ONLY
- 701201-02 LANE CLOSURE, 2L, 2W, DAY ONLY, FOR SPEEDS P 45 MPH
- 701301-02 LANE CLOSURE, 2L, 2W, SHORT TIME OPERATIONS
- 701306-01 LANE CLOSURE, 2L, 2W, SLOW MOVING OPERATIONS DAY ONLY, FOR SPEEDS P 45 MPH
- 701311-02 LANE CLOSURE, 2L, 2W, MOVING OPERATIONS - DAY ONLY
- 701321-08 LANE CLOSURE, 2L, 2W, BRIDGE REPAIR WITH BARRIER
- 702001-06 TRAFFIC CONTROL DEVICES
- 704001-03 TEMPORARY CONCRETE BARRIER
- 720001 SIGN PANEL MOUNTING DETAILS
- 780001-01 TYPICAL PAVEMENT MARKINGS
- 781001-02 TYPICAL APPLICATIONS RAISED REFLECTIVE PAVEMENT MARKERS

STATE OF ILLINOIS
DEPARTMENT OF TRANSPORTATION
DIVISION OF HIGHWAYS

**PROPOSED
HIGHWAY PLANS**

FAP Route 635 (IL 114)
SECTION 105 BR-2
PROJECT ACBRF-0635(007)
KANKAKEE COUNTY

C - 93 - 097 - 04

PROJECT DESCRIPTION

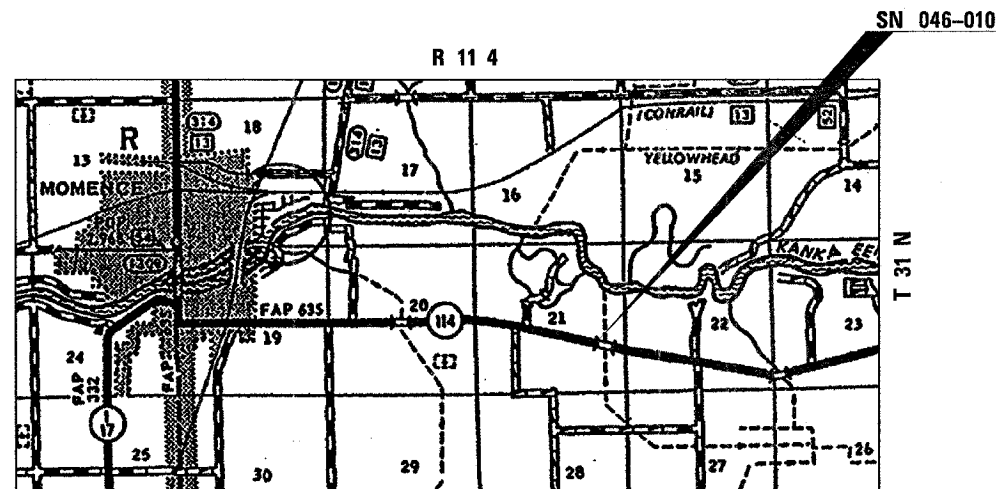
BRIDGE REMOVAL & REPLACEMENT (046-0104) WITH A BOX CULVERT
OVER YELLOWHEAD CREEK, 3.1 MI EAST OF IL 1



RURAL MINOR ARTERIAL

2005 ADT = 5800

P.V. = 56.47% S.U. = 5.6% M.U. = 56.47%



LOCATION MAP
NOT TO SCALE

GROSS LENGTH = 350 FT = 0.06 MI
NET LENGTH = 350 FT = 0.06 MI

FULL SIZE PLANS HAVE BEEN PREPARED USING STANDARD
ENGINEERING SCALES, REDUCED SIZED PLANS WILL NOT
CONFORM TO STANDARD SCALES, IN MAKING MEASUREMENTS
ON REDUCED PLANS, THE ABOVE SCALES MAY BE USED.

MICROFILMED _____
REEL NUMBER _____
AWARDED _____
RESIDENT ENGINEER _____
AS BUILT CHANGES WERE MADE
ON THE FOLLOWING SHEETS _____

JULIE 1-800-892-0123

DISTRICT 3 NO. (815) 434-6131

PROJECT ENGINEER: DAN DRAPER
UNIT CHIEF: PAT BRABOY
TOWNSHIP: MOMENCE

CONTRACT NO. 66456

STATE OF ILLINOIS
DEPARTMENT OF TRANSPORTATION
DIVISION OF HIGHWAYS

SUBMITTED _____ 20 _____
Amey P. Hunter
DEPUTY DIRECTOR OF HIGHWAYS, REGION ENGINEER
October 13, 20 06
Mike Lane
ENGINEER OF DESIGN AND ENVIRONMENT
October 13, 20 06
Milton R. Sisco, P.E.
DIRECTOR OF HIGHWAYS, CHIEF ENGINEER

PRINTED BY THE AUTHORITY
OF THE STATE OF ILLINOIS

P. A. P. RTE.	SECTION	COUNTY	TOTAL SHEETS	SHEET NO.
635	105 BR-2	KANKAKEE	25	2
STA.		TO STA.		
FED. ROAD DIST. NO.		ILLINOIS	FED. AID PROJECT	

GENERAL NOTES

THE THICKNESS OF BITUMINOUS MIXTURES SHOWN ON THE PLANS IS THE NOMINAL THICKNESS. DEVIATIONS FROM THE NOMINAL THICKNESS WILL BE PERMITTED WHEN SUCH DEVIATIONS OCCUR DUE TO IRREGULARITIES IN THE EXISTING SURFACE OR BASE ON WHICH THE BITUMINOUS MIXTURE IS PLACED.

THE BITUMINOUS SURFACE OF ALL MAILBOX TURNOUTS, PRIVATE ENTRANCES, COMMERCIAL ENTRANCES, AND SIDE ROADS SHALL BE MADE NEATLY, IN A WORKMANLIKE MANNER, AND SHALL ACCURATELY CONFORM TO THE SHAPES AND DIMENSIONS SHOWN ON THE PLAN DETAILS. IF REQUIRED BY THE ENGINEER, THE CONTRACTOR SHALL BE REQUIRED TO SAW CUT THE BITUMINOUS SURFACE TO CONFORM TO THE SHAPES AND DIMENSIONS SHOWN ON THE PLAN DETAILS. THIS WORK SHALL BE INCLUDED IN THE COST OF THE BITUMINOUS SURFACE

THE BASE COURSE WIDENING SHALL BE CARRIED THROUGH ALL ENTRANCES, SIDE ROADS, AND MAILBOX TURNOUTS. EXCEPTIONS WILL BE SHOWN ON THE PLANS.

EXCEPT AS NOTED ON THE PLANS, PAVEMENT GRADES SHOWN ARE AT THE TOP OF PAVEMENT SURFACES.

BEFORE ORDERING PIPE CULVERTS OR PIPE DRAINS, THE CONTRACTOR SHALL CONSULT THE ENGINEER FOR EXACT LENGTHS.

AGGREGATE (PRIME COAT): FA 20 MAY BE USED IN ADDITION TO THE GRADATIONS LISTED IN THE 3RD PARAGRAPH OF ARTICLE 1003.03(C) OF THE STANDARD SPECIFICATIONS.

THE ENGINEER WILL BE THE SOLE JUDGE CONCERNING CURING TIME FOR THE VARIOUS BITUMINOUS LIFTS.

FOR STABILIZATION, ALL TYPE III BARRICADES SHALL REQUIRE A MINIMUM OF FOUR SAND BAGS PER BARRICADE.

SEEDING SHALL NOT BE PERMITTED AT ANY TIME WHEN THE GROUND IS FROZEN, WET, OR IN AN UNTILLABLE CONDITION. LOCATIONS TO BE SEEDED WILL BE DETERMINED BY THE ENGINEER.

ONLY THOSE TREES DESIGNATED BY THE ENGINEER OR LISTED IN THE TREE REMOVAL SCHEDULE SHALL BE REMOVED. THE CONTRACTOR SHALL PROTECT ALL REMAINING TREES FROM DAMAGE DUE TO HIS OPERATIONS.

THE FINISHED EARTHWORK SHALL HAVE A VEGETATION SUSTAINING SOIL COVERING THE TOP FOUR INCHES IN AREAS TO BE SEEDED OR SODDED. THE VEGETATION SUSTAINING SOIL REQUIRED WILL NOT BE PAID FOR SEPARATELY BUT SHALL BE INCLUDED IN THE COST OF FURNISHED EXCAVATION.

ALL ELEVATIONS REFERRING TO U.S.G.S. MEAN SEA LEVEL DATUM.

ABANDONED UNDERGROUND UTILITIES THAT CONFLICT WITH CONSTRUCTION SHALL BE DISPOSED OF OUTSIDE THE LIMITS OF THE RIGHT OF WAY ACCORDING TO ARTICLE 202.03 OF THE STANDARD SPECIFICATIONS AND AS DIRECTED BY THE ENGINEER. THIS WORK WILL NOT BE PAID FOR SEPARATELY BUT SHALL BE INCLUDED IN THE COST OF EARTH EXCAVATION.

COMMITMENTS

- ENVIRONMENTAL COORDINATION

ANY REFERENCE TO A STANDARD IN THESE PLANS SHALL BE INTERPRETED TO MEAN THE EDITION AS INDICATED BY THE SUBNUMBER SHOWN IN THE LIST OF STANDARDS INCLUDED IN THESE PLANS.

THE FOLLOWING RATES OF APPLICATION HAVE BEEN USED IN CALCULATING PLAN QUANTITIES:

GRANULAR MATERIALS	2.05	TONS / CU YD
BITUMINOUS MAT PRIME COAT	0.08	GAL / SQ YD OR
	0.375	GAL / SQ YD
AGGREGATE PRIME COAT	0.002	TONS / SQ YD
BITUMINOUS RESURFACING	112	LBS / SQ YD / IN
SHORT TERM PAVEMENT MARKING	10	FT /100 FT OF APPLICATION
MIX FOR CRACKS, JTS & FLGWYS	0.0003	TONS / SQ YD
LEVEL BINDER (HAND METHOD)	0.0005	TONS / SQ YD
TEMPORARY DITCH CHECKS	7	BALES OR
	5	TONS AGGREGATE

THE COST OF MAKING ANY PIPE CULVER CONNECTIONS TO EXISTING PIPE CULVERTS SHALL BE INCLUDED IN THE COST OF THE NEW PIPE CULVERT.

MEMBERS OF JULIE KNOWN TO BE WITHIN THE LIMITS OF THE IMPROVEMENT ARE:

NON-MEMBERS OF JULIE KNOWN TO BE WITHIN THE LIMITS OF THE IMPROVEMENT ARE:

THE EXISTING SHOULDERS ARE LOW. IN THE EVENT THAT CONSTRUCTION OPERATIONS RESULT IN A DROP OFF GREATER THAN 3" BETWEEN THE EDGE OF PAVEMENT OR EDGE OF SHOULDER WITHIN 3' OF THE EDGE OF PAVEMENT AND THE EARTH OR AGGREGATE SHOULDERS, THEN THE DROP OFF SHALL BE PROTECTED ACCORDING TO ARTICLE 701.04(B)(1) OF THE STANDARD SPECIFICATIONS. THIS WORK WILL BE CONSIDERED AS INCLUDED IN THE CONTRACT UNIT PRICES FOR TRAFFIC CONTROL.

STATE OF ILLINOIS
DEPARTMENT OF TRANSPORTATION
DISTRICT THREE

PREPARED BY: Ed Powell
DISTRICT STUDIES & PLANS ENGINEER

DATE: 8-31-06

EXAMINED BY: Herb Jung
DISTRICT CONSTRUCTION ENGINEER

Harold
DISTRICT MATERIALS ENGINEER

Bruce A. Hester
DISTRICT OPERATIONS ENGINEER

ILLINOIS DEPARTMENT OF TRANSPORTATION

GENERAL NOTES

F.A.P. RTE.	SECTION	COUNTY	TOTAL SHEETS	SHEET NO.
635	(105)BR-2	KANKAKEE	25	3
STA. _____		TO STA. _____		
FED. ROAD DIST. NO. _____		ILLINOIS	FED. AID PROJECT	

SUMMARY OF QUANTITIES				← 80% FED 20% STATE →	
CODE NO	ITEM	UNIT	TOTAL QUANTITY	CONSTR. TYPE CODE	
				ROADWAY I000	Y007
20200100	EARTH EXCAVATION	CU YD	41.0	41.0	
20400800	FURNISHED EXCAVATION	CU YD	185.0	185.0	
20700220	POROUS GRANULAR EMBANKMENT	CU YD	205.0		205.0
• 25000300	SEEDING, CLASS 3	ACRE	0.3	0.3	
• 25000400	NITROGEN FERTILIZER NUTRIENT	POUND	26.0	26.0	
• 25000500	PHOSPHORUS FERTILIZER NUTRIENT	POUND	26.0	26.0	
• 25000600	POTASSIUM FERTILIZER NUTRIENT	POUND	26.0	26.0	
• 25100115	MULCH, METHOD 2	ACRE	0.3	0.3	
28000250	TEMPORARY EROSION CONTROL SEEDING	POUND	84.0	84.0	
28000300	TEMPORARY DITCH CHECKS	EACH	4.0	4.0	
35100300	AGGREGATE BASE COURSE, TYPE A 4"	SQ YD	185.0	185.0	
40600100	BITUMINOUS MATERIALS (PRIME COAT)	GALLON	191.0	191.0	
40600300	AGGREGATE (PRIME COAT)	TON	3.0	3.0	
40600982	HOT-MIX ASPHALT SURFACE REMOVAL - BUTT JOINT	SQ YD	347.0	347.0	
40600990	TEMPORARY RAMP	SQ YD	40.0	40.0	
40800050	INCIDENTAL HOT-MIX ASPHALT SURFACING	TON	14.0	14.0	
44000100	PAVEMENT REMOVAL	SQ YD	98.0	98.0	
48101200	AGGREGATE SHOULDERS, TYPE B	TON	35.0	35.0	
50100100	REMOVAL OF EXISTING STRUCTURES	EACH	1.0	1.0	
50105210	REMOVE EXISTING CULVERTS	FOOT	58.0	58.0	
X0323988	TEMPORARY SOIL RETENTION SYSTEM	SQ FT	125.0	125.0	
54011104	PRECAST CONCRETE BOX CULVERT 11' X 4'	FOOT	48.0		48.0
54215550	METAL END SECTIONS 15"	EACH	4.0	4.0	
542D0220	PIPE CULVERTS, CLASS D, TYPE 1 15"	FOOT	416.0	416.0	
63200310	GUARDRAIL REMOVAL	FOOT	348.0	348.0	
67100100	MOBILIZATION	L SUM	1.0	1.0	
70100405	TRAFFIC CONTROL AND PROTECTION, STANDARD 701321	EACH	1.0	1.0	
70100460	TRAFFIC CONTROL AND PROTECTION, STANDARD 701306	L SUM	1.0	1.0	
70106500	TEMPORARY BRIDGE TRAFFIC SIGNALS	EACH	1.0	1.0	

• SPECIALTY ITEMS

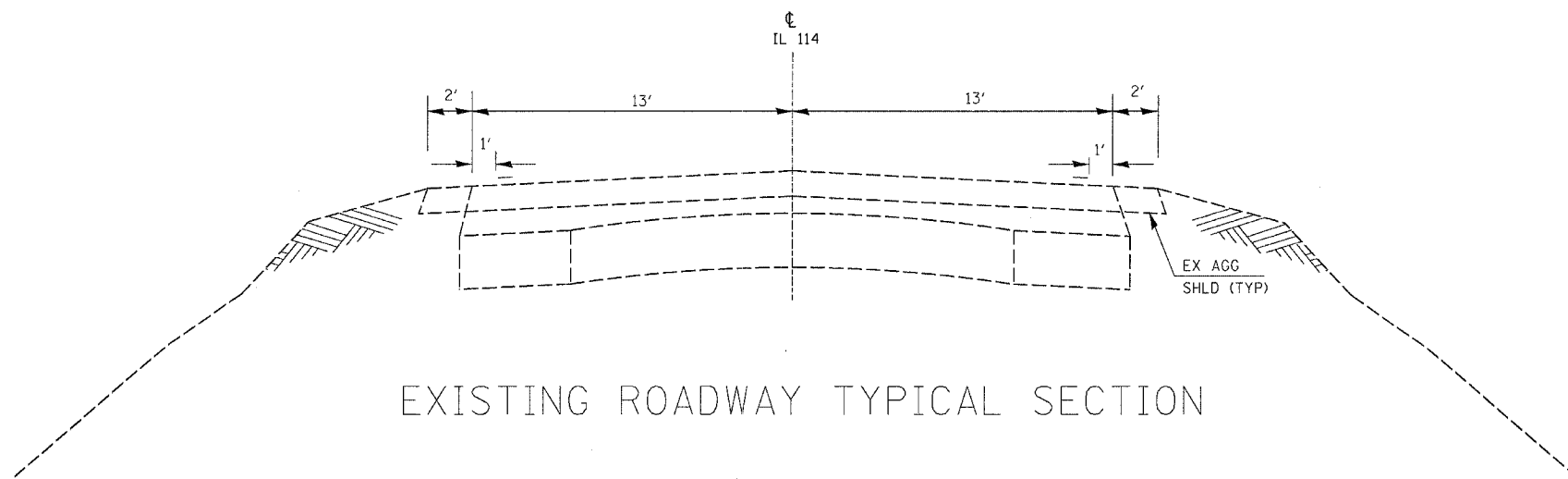
SUMMARY OF QUANTITIES

F.A.P. RTE.	SECTION	COUNTY	TOTAL SHEETS	SHEET NO.
635	(105)BR-2	KANKAKEE	25	4
STA.		TO STA.		
FED. ROAD DIST. NO. - ILLINOIS FED. AID PROJECT				

SUMMARY OF QUANTITIES				← 80% FED 20% STATE →	
CODE NO.	ITEM	UNIT	TOTAL QUANTITY	CONSTR TYPE CODE	
				ROADWAY I000	Y007
70300100	SHORT-TERM PAVEMENT MARKING	FOOT	200.0	200.0	
70300220	TEMPORARY PAVEMENT MARKING- LINE 4"	FOOT	1290.0	1290.0	
70300240	TEMPORARY PAVEMENT MARKING - LINE 6"	FOOT	162.0	162.0	
• 70300520	PAVEMENT MARKING TAPE, TYPE III 4"	FOOT	1252.0	1252.0	
70301000	WORK ZONE PAVEMENT MARKING REMOVAL	SQ FT	458.0	458.0	
70400100	TEMPORARY CONCRETE BARRIER	FOOT	286.0	286.0	
70400200	RELOCATE TEMPORARY CONCRETE BARRIER	FOOT	170.0	170.0	
• 78001110	PAINT PAVEMENT MARKING - LINE 4"	FOOT	1290.0	1290.0	
• 78001130	PAINT PAVEMENT MARKING - LINE 6"	FOOT	162.0	162.0	
• 78100100	RAISED REFLECTIVE PAVEMENT MARKER	EACH	8.0	8.0	
78300100	PAVEMENT MARKING REMOVAL	SQ FT	215.0	215.0	
78300200	RAISED REFLECTIVE PAVEMENT MARKER REMOVAL	EACH	8.0	8.0	
X0324043	GRATING FOR CONCRETE HEADWALL	EACH	2.0		2.0
35501320	HOT-MIX ASPHALT BASE COURSE 9"	SQ YD	543.0	543.0	
35501332	HOT-MIX ASPHALT BASE COURSE 12"	SQ YD	185.0	185.0	
40603345	HOT-MIX ASPHALT SURFACE COURSE, MIX'D, N90	TON	210.0	210.0	
40600645	LEVELING BINDER (MACHINE METHOD), N90	TON	105.0	105.0	
X7200201	WIDTH RESTRICTION SIGNING	L SUM	1.0	1.0	
■ Z0030250	IMPACT ATTENUATORS, TEMPORARY (NON- REDIRECTIVE), TEST LEVEL 3	EACH	2.0	2.0	
■ Z0030350	IMPACT ATTENUATORS, RELOCATE (NON- REDIRECTIVE), TEST LEVEL 3	EACH	2.0	2.0	
Z0000990	AGGREGATE FOR TEMPORARY ACCESS	TON	10.0	10.0	
X0325582	PRECAST BOX CULVERT END SECTION 11' X 4'	FOOT	2.0		2.0

- SPECIALTY ITEMS
- SFTY-3N

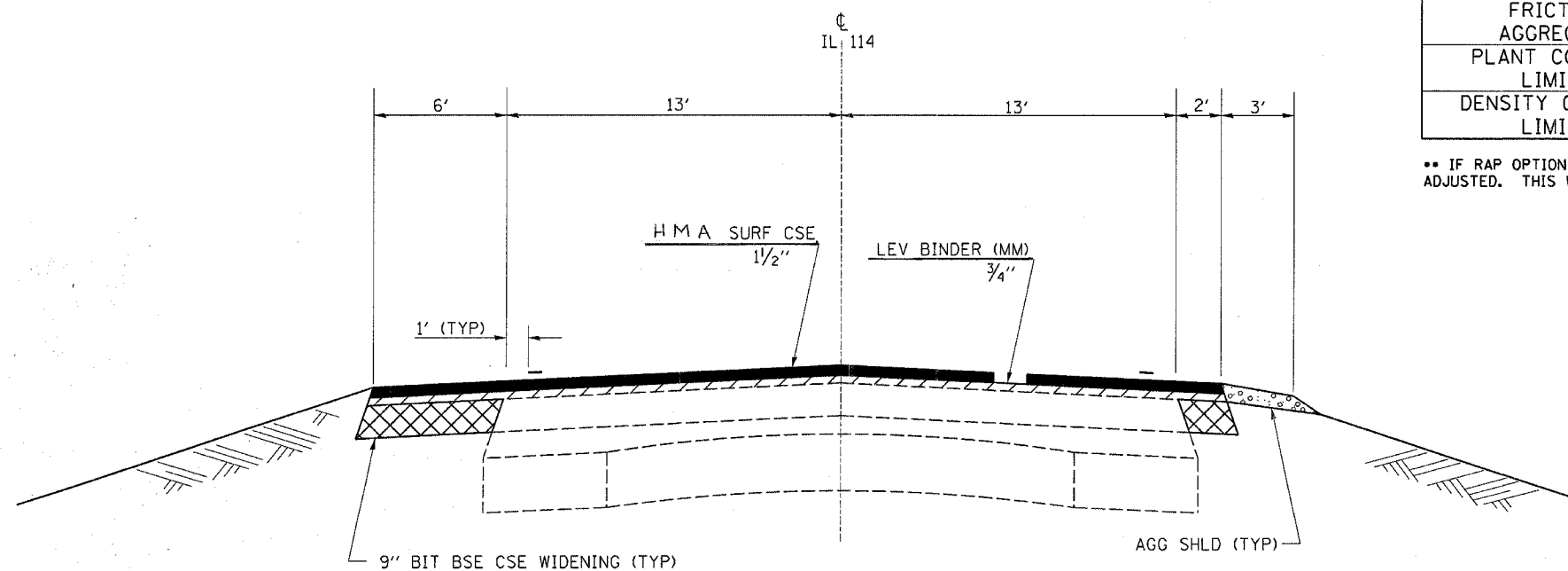
F.A.P. RTE.	SECTION	COUNTY	TOTAL SHEETS	SHEET NO.
635	(105)BR-2	KANKAKEE	25	5
STA. 165+00 TO STA. 169+75			PLAN AND PROFILE	



EXISTING ROADWAY TYPICAL SECTION

	SURFACE	LEVELING BINDER	BASE CSE 9"	BASE CSE 12"
PG GRADE	PG 64-22	PG 64-22	PG 64-22	PG 64-22
MAX % RAP ALLOWABLE**	10%	10%	15%	10%
DESIGN AIR VOIDS	4% @ N90	4% @ N90	4% @ N70	4% @ N90
MIXTURE COMPOSITION	IL 12.5 OR IL 9.5	IL 9.5	IL 19.0	IL 19.0
FRICTION AGGREGATE	MIXTURE D	-	-	-
PLANT CONTROL LIMITS	CLASS I	CLASS I	CLASS I	CLASS I
DENSITY CONTROL LIMITS	CORES OR NUCLEUR	SATISFACTION OF ENGINEER	CORES OR NUCLEUR	CORES OR NUCLEUR

** IF RAP OPTION IS SELECTED, THE ASPHALT CEMENT GRADE MAY NEED TO BE ADJUSTED. THIS WILL BE DETERMINED BY THE ENGINEER.

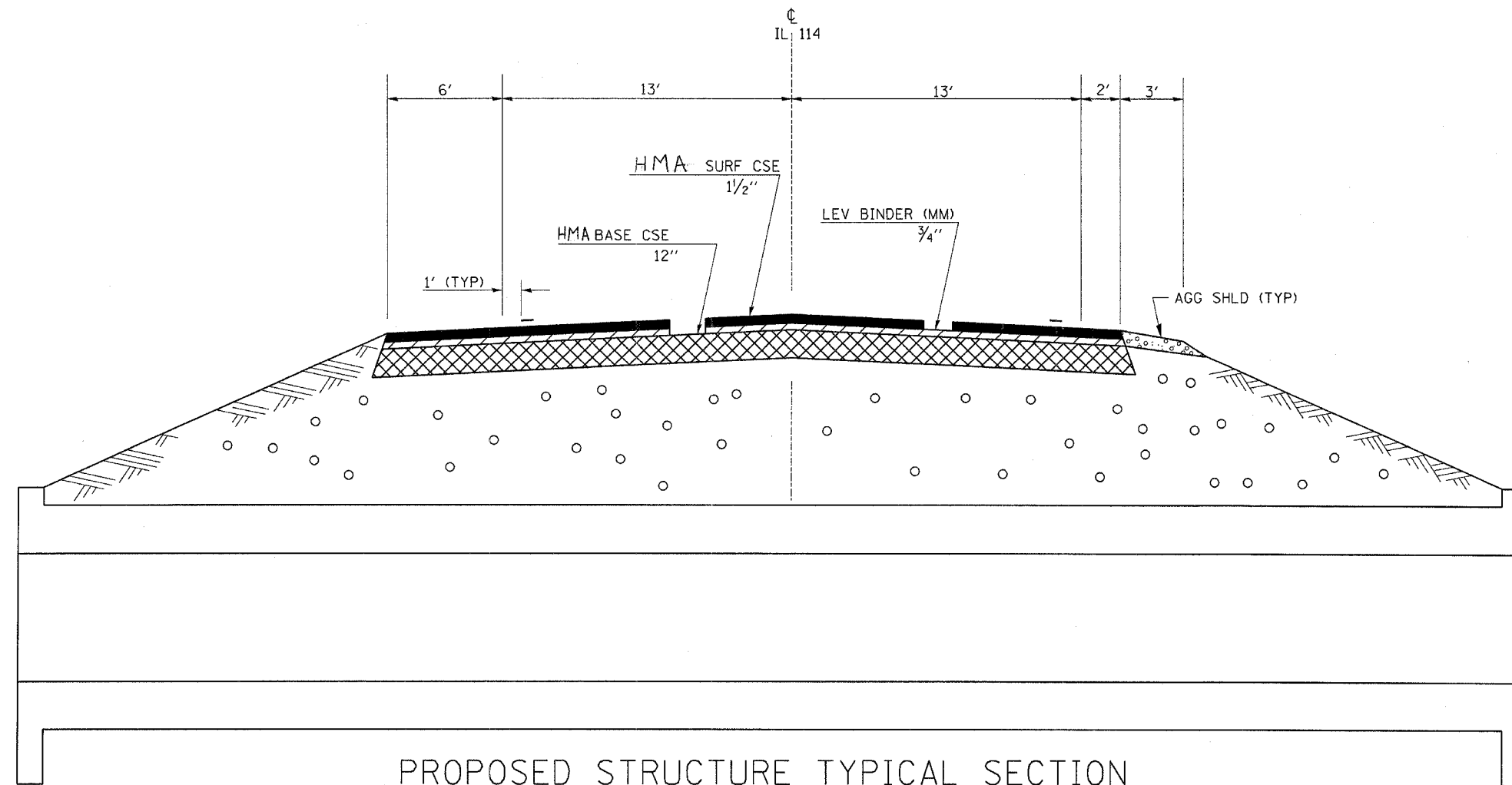
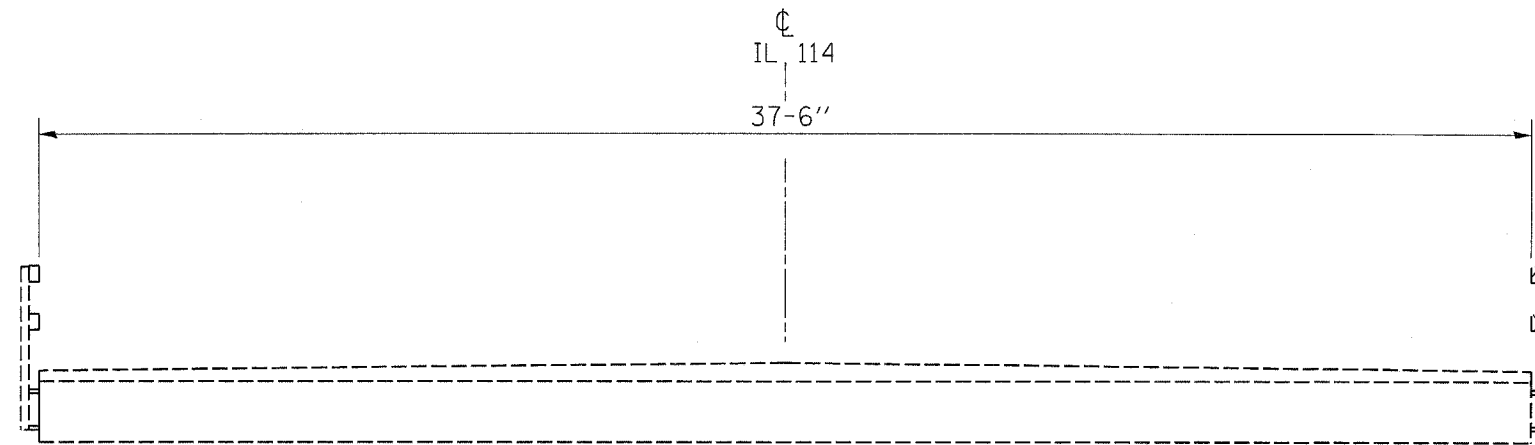


PROPOSED ROADWAY TYPICAL SECTION

STA 160+71 TO STA 163+72 &
STA 164+08 TO STA 167+16

**ROADWAY
TYPICAL SECTION**

F.A.P. RTE.	SECTION	COUNTY	TOTAL SHEETS	SHEET NO.
635	(105)BR-2	KANKAKEE	25	6
STA 163+77 TO		STA 164+04		



**BOX CULVERT
TYPICAL SECTION**

PROPOSED STRUCTURE TYPICAL SECTION

© CENTERLINE
STA 163+72 TO 164+08

F.A.P. RTE.	SECTION	COUNTY	TOTAL SHEETS	SHEET NO.
635	11051BR-2	KANKAKEE	25	8
STA. _____ TO STA. _____		FED. ROAD DIST. NO. - ILLINOIS FED. AID PROJECT		

MAINLINE										
LOCATION	LENGTH	HMA BASE CSE	HMA BINDER CSE	AGG BSE CSE	LEVELING BINDER (MM)	HMA SURF CSE	AGG (PR CT)	TEMP RAMP	BIT MATLS (PR CT)	AGG SHLD TY B
STATION	FT	9"	12"	TYPE A 4"						
		SQ YD	SQ YD	SQ YD	TON	TON	TON	SQ YD	GAL	TON
STA 260+71 TO 267+16	645				105.0	210.0	2.0	16.0	190.0	35.0
STA 260+71 TO 263+72(RT)	301	67								
STA 263+72 TO 264+08 (BC)	36		185	185						
STA 264+08 TO 267+16 (RT)	308	68								
STA 260+71 TO 263+72 (LT)	301	201								
STA 264+08 TO 267+16 (LT)	308	206								
TOTAL		542.3	185	185	105.0	210.0	2.0	16.0	190.0	35.0

GUARDRAIL	
LOCATION	GUARDRAIL REMOVAL FOOT
STA 262+84 TO 263+86 (RT)	102.0
STA 263+86 TO 264+08 (RT)	
STA 264+08 TO 265+11 (RT)	103.0
STA 263+46 TO 263+86 (LT)	40.0
STA 263+86 TO 264+08 (LT)	
STA 264+08 TO 265+11 (LT)	103.0
TOTAL	348.0

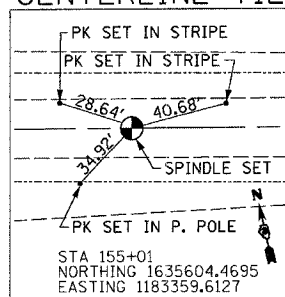
STAGE CONSTRUCTION ITEMS									
LOCATION	TEMP BR TRAFFIC SIGNALS	TEMP CONC BARRIER	RELOCATE TEMP CONC BARRIER	TEMP IMPACT ATTENUATORS	RELOCATE IMPACT ATTENUATORS	AGGREGATE FOR TEMP ACCESS	PAVEMENT MARKING REMOVAL	PVMT MARKING TAPE TYPE III, 4" WHITE	WORK ZONE PVMT REM
STATION	EACH	FOOT	FOOT	EACH	EACH	TON	SQ FT	FOOT	SQ FT
STAGE I									
STA 162+50 TO 165+36	0.5	286							
STA 160+71 STOP BAR				1				36	
STA 160+71 TO 163+41								277	92.0
160+71 TO 167+16							215		
STA 164+40 TO 167+16				1				277	92.0
STA 167+16 STOP BAR								36	
STAGE II									
STA 163+20 TO 164+90	0.5		170						
STA 160+71 STOP BAR					1			36	12.0
STA 160+71 TO 163+41								277	92.0
STA 164+40 TO 167+16								277	92.0
STA 167+16 STOP BAR					1			36	12.0
163+30						10			
TOTAL	1	286	170	2	2	10	215	1252	392.0

REMOVAL ITEMS				
LOCATION	LENGTH	HMA SURF REMOVAL BUTT JOINT	PAVEMENT REMOVAL	STRUCTURE REMOVAL
	FT	SQ YD	SQ YD	EACH
STA 260+71 TO 261+31	60	173.3		
STA 266+56 TO 267+16	60	173.3		
STA 263+70 TO 263+87	17		49.1	
164+12 TO 164+29	17		49.1	
STA 163+96				1
TOTAL		347	98	1

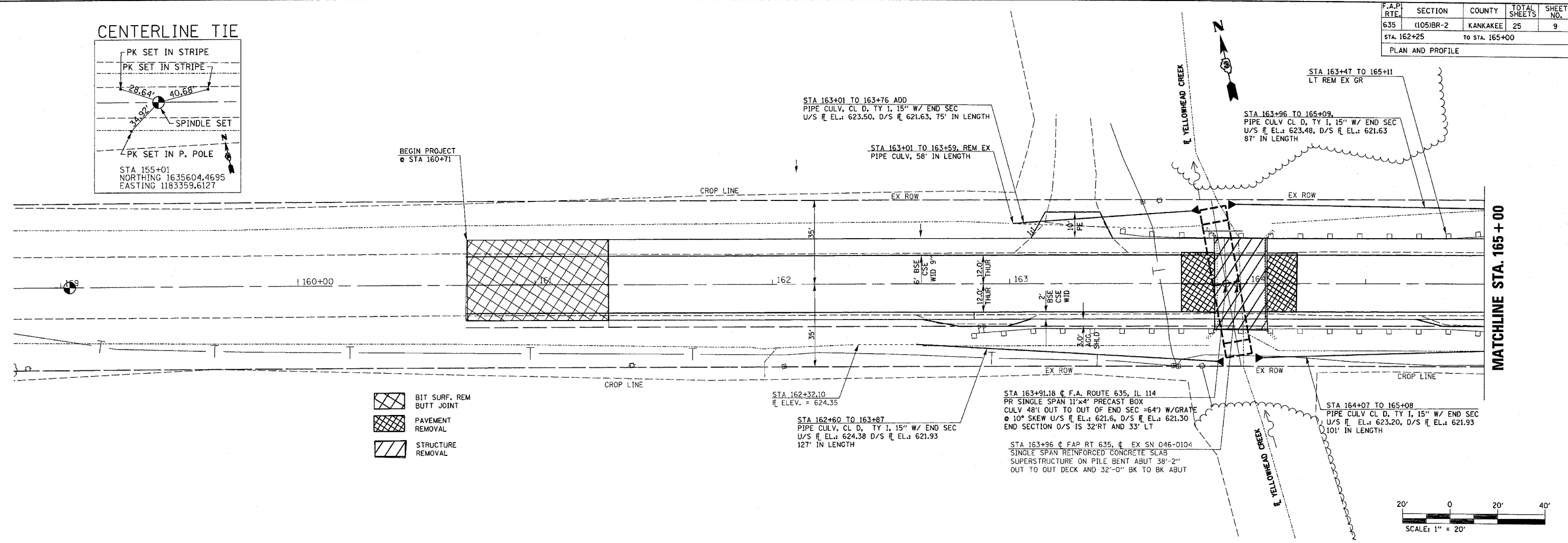
ENTRANCES & MAILBOX TURNOUTS					
LOCATION	AREA	INCIDENTAL HMA SURF CSE	BIT MATLS (PR CT)	AGG (PR CT)	TEMP RAMP
STATION	SQ FT	TON	GAL	TON	SQ YD
STA 263+25 (LT) Private Entrance	349.0	4.9	3.10	0.08	4.0
STA 265+33 (LT) Private Entrance	349.0	4.9	3.10	0.08	4.0
STA 262+89 (RT) Mail box Turnout	118.0	1.7	1.05	0.03	8.0
STA 265+00 (RT) Mail box Turnout	118.0	1.7	1.05	0.03	8.0
TOTAL		13.1	1.05	0.21	24.0

F.A.P. RTE.	SECTION	COUNTY	TOTAL SHEETS	SHEET NO.
635	(105)BR-2	KANKAKEE	25	9
STA. 162+25		TO STA. 165+00		

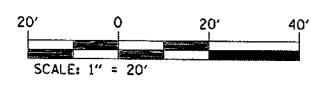
CENTERLINE TIE



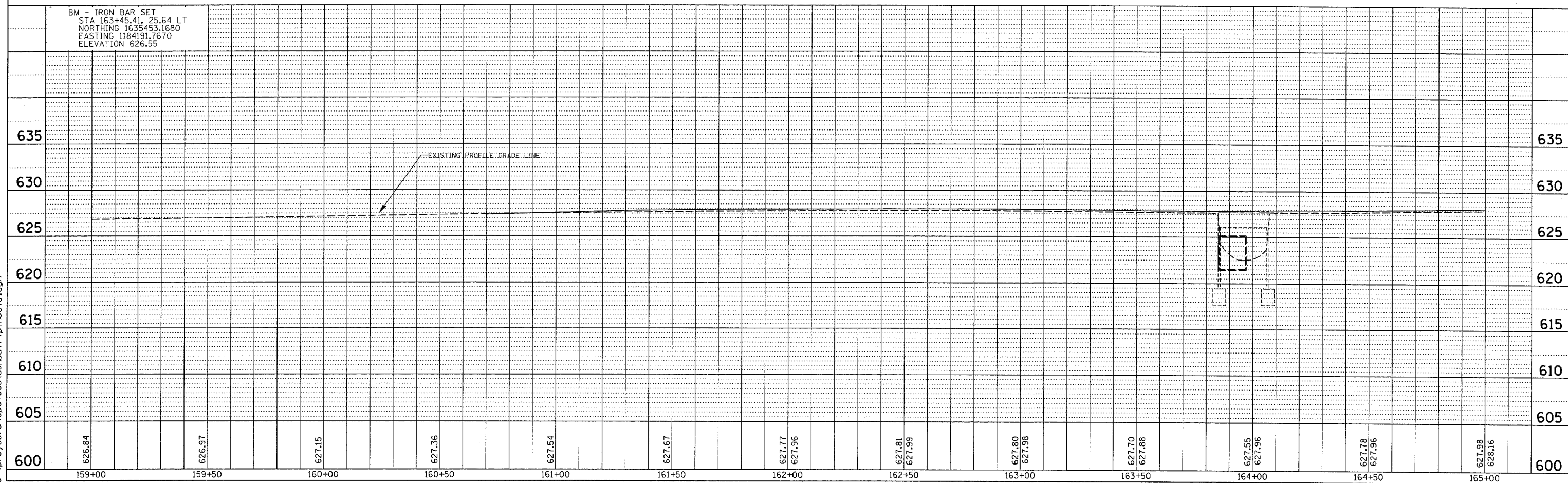
PLAN	SURVEYED	DATE
	ALIGNED	
	PLANNED	
	CONSTRUCTED	
	REVISIONS	
	BY	
	DATE	
	NO.	



- BIT SURF. REM BUTT JOINT
- PAVEMENT REMOVAL
- STRUCTURE REMOVAL



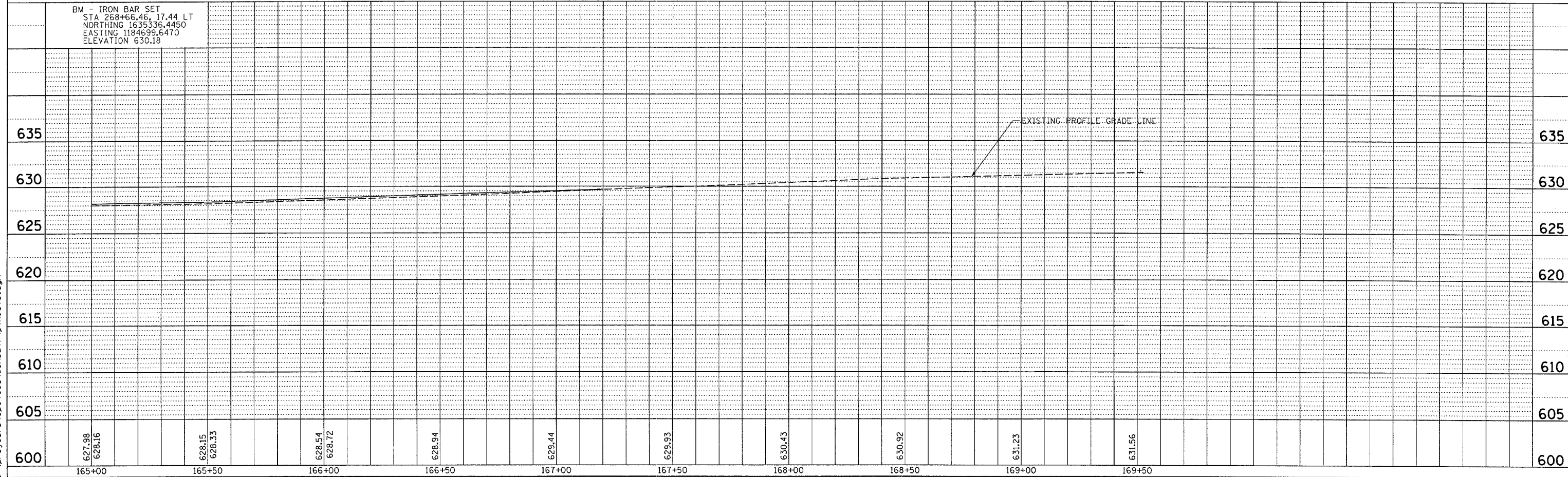
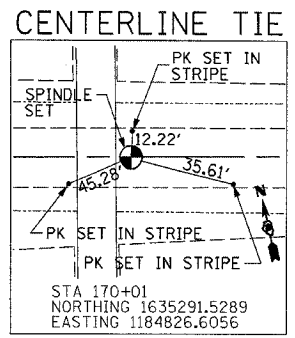
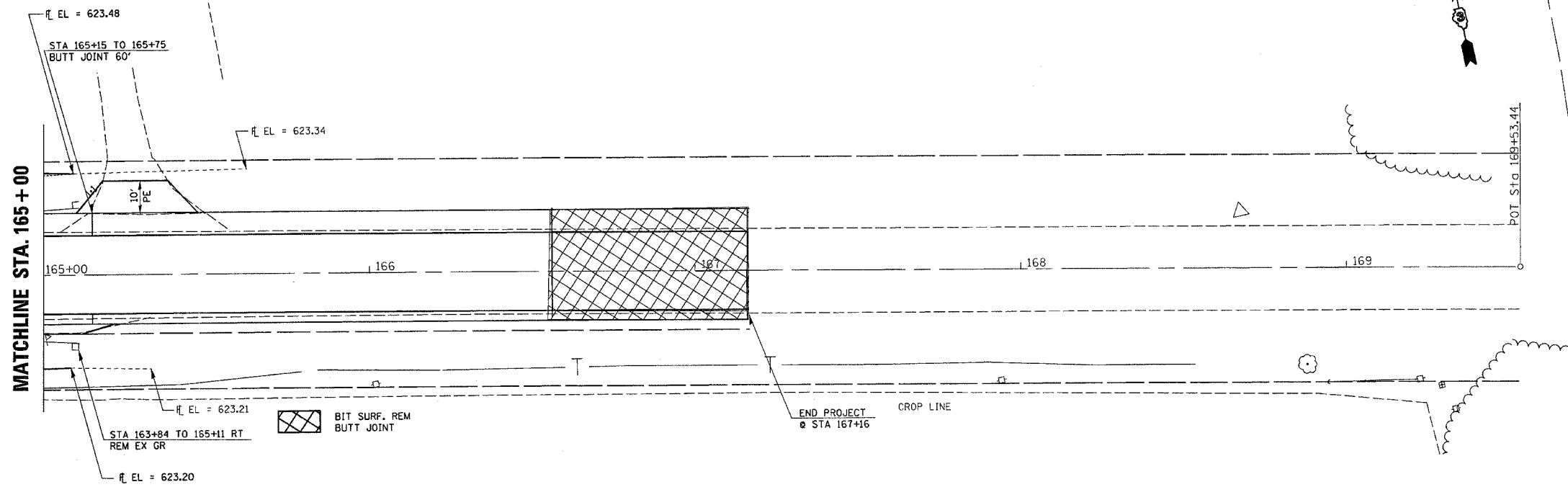
BM - IRON BAR SET
 STA 163+45.41, 25.64 LT
 NORTHING 1635453.1680
 EASTING 1184191.7670
 ELEVATION 626.55



8/31/2006 12:56:16 PM
 c:\projects\ep04003\consul\p\inoc4a.dgn

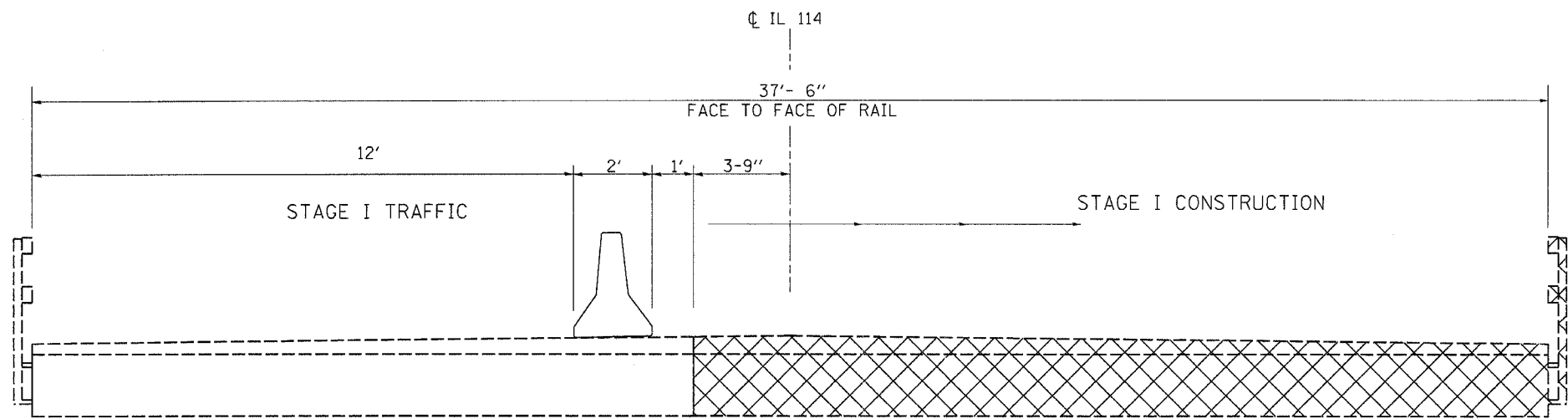
F.A.P. RTE.	SECTION	COUNTY	TOTAL SHEETS	SHEET NO.
635	(105)BR-2	KANKAKEE	25	10
STA. 165+00		TO STA. 169+75		
PLAN AND PROFILE				

PLAN	DATE
SURVEYED	
ALIGNED	
CHECKED	
BY	
NO.	

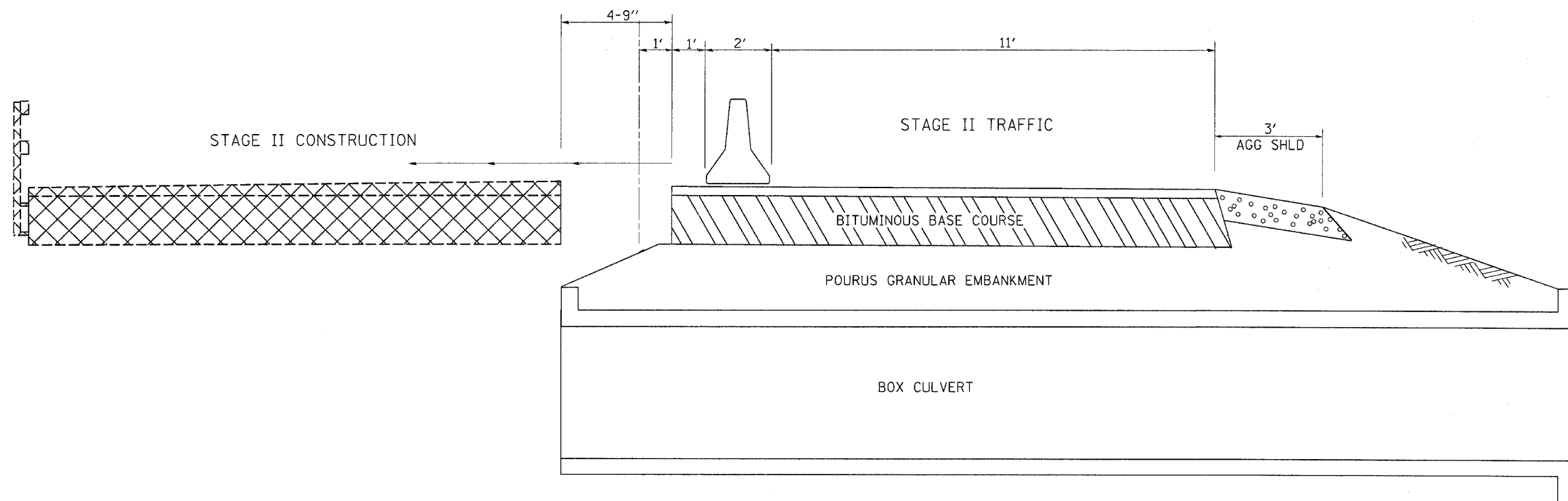


8/31/2006 12:56:26 PM c:\projects\ep04003\consult\p\ino04a.dgn

F.A.P. RTE.	SECTION	COUNTY	TOTAL SHEETS	SHEET NO.
635	(105)BR-2	KANKAKEE	25	11
STA. _____		TO STA. _____		
FED. ROAD DIST. NO. _____		ILLINOIS FED. AID PROJECT		



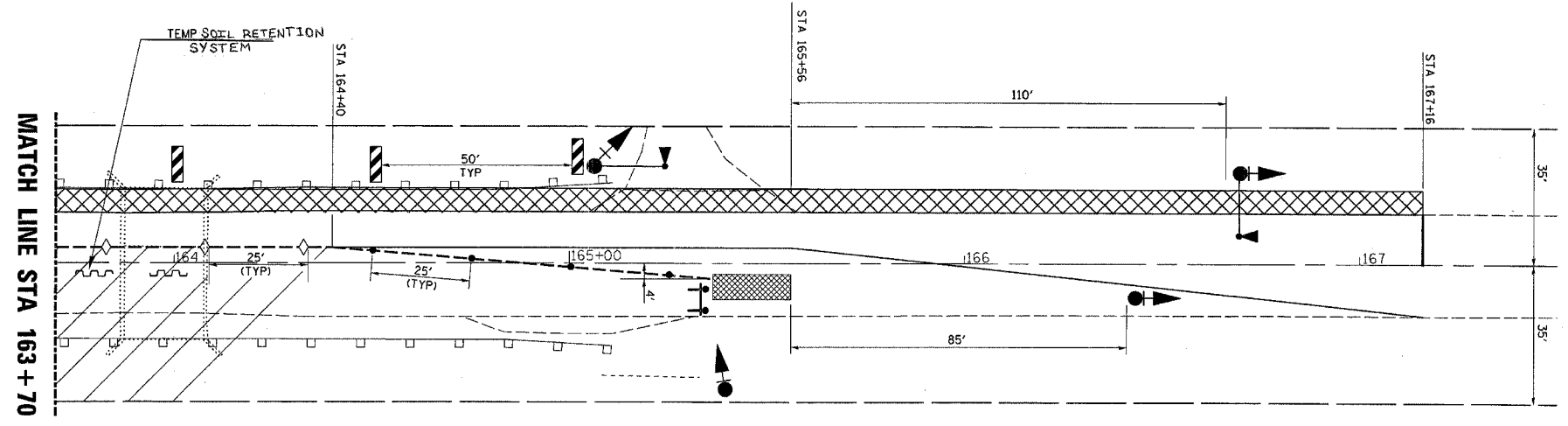
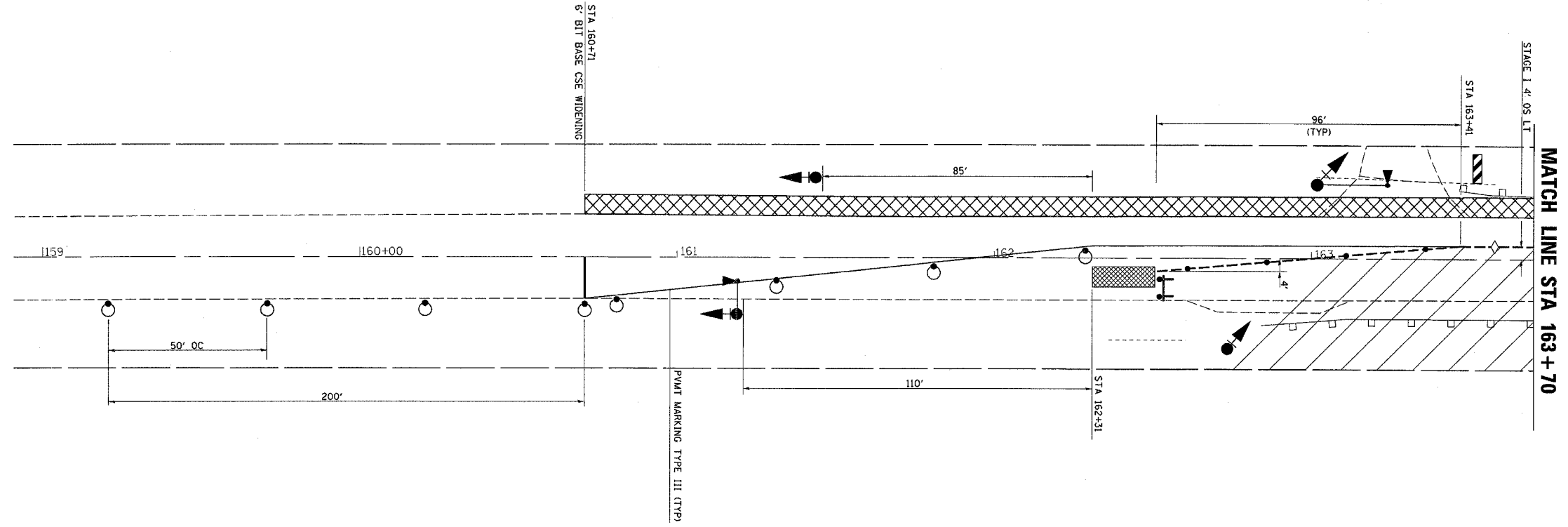
STAGE I CONSTRUCTION



STAGE II CONSTRUCTION

ILLINOIS DEPARTMENT OF TRANSPORTATION
**STAGE CONSTRUCTION
 TYPICAL SECTIONS**

F.A.P. RTE.	SECTION	COUNTY	TOTAL SHEETS	SHEET NO.
635	(105)BR-2	KANKAKEE	25	12
STA. _____		TO STA. _____		
FED. ROAD DIST. NO. _____		ILLINOIS FED. AID PROJECT		



PRE STAGE I
SEQUENCE OF OPERATIONS

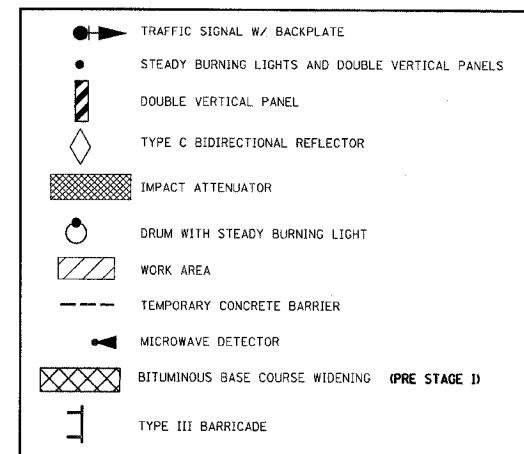
1. PRIOR TO STAGE I, BITUMINOUS BASE COURSE WIDENING SHALL BE IN PLACE

STAGE I
SEQUENCE OF OPERATIONS

1. INSTALL TEMPORARY TRAFFIC SIGNALS, ATTENUATORS, TEMPORARY CONCRETE BARRIERS, DRUMS, ALL OTHER ITEMS AS PER THESE DETAILS AND AS PER LANE CLOSURE 2L, 2W, BRIDGE REPAIR WITH BARRIER STANDARD 701321, BEGIN OPERATING UNDER STAGE I TRAFFIC CONDITIONS.
2. CONTRACTOR MUST EXCAVATE BEHIND EXISTING ABUTMENTS PRIOR TO BRIDGE DECK REMOVAL. SEE SPECIAL PROVISIONS. REMOVE EXISTING PAVEMENT, AGGREGATE SHOULDERS, GUARDRAIL & TRAFFIC BARRIER TERMINALS. EXCAVATE, AND REMOVE PORTION OF EXISTING STRUCTURE. PLACE TEMPORARY SOIL RETENTION SYSTEM.
3. CONSTRUCT NEW PORTION OF PROPOSED BOX CULVERT, BACKFILL, COMPACT, PAVEMENT, BITUMINOUS BASE COURSE, AND ROUGH GRADING OF DITCHES.

NOTES:

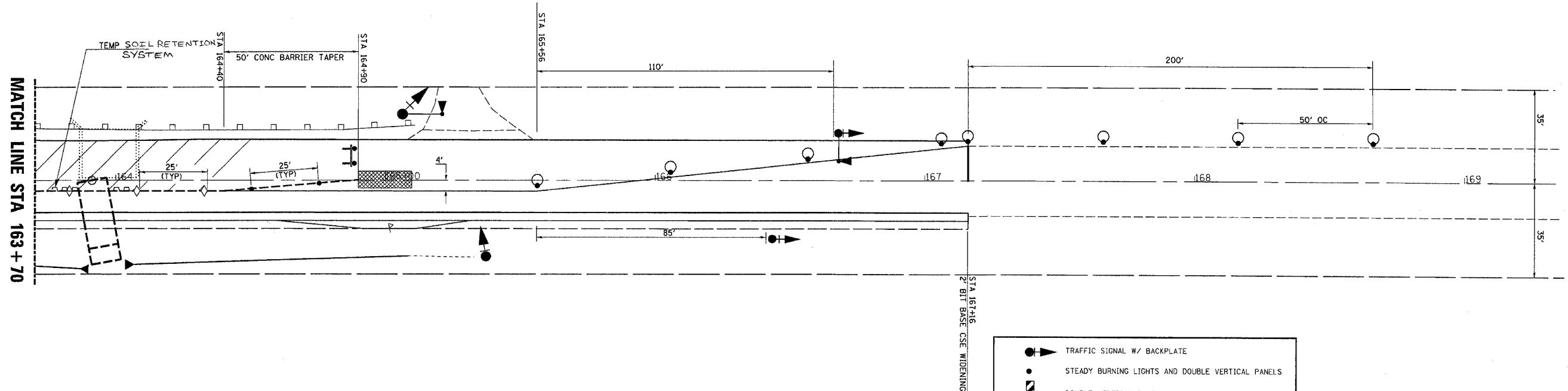
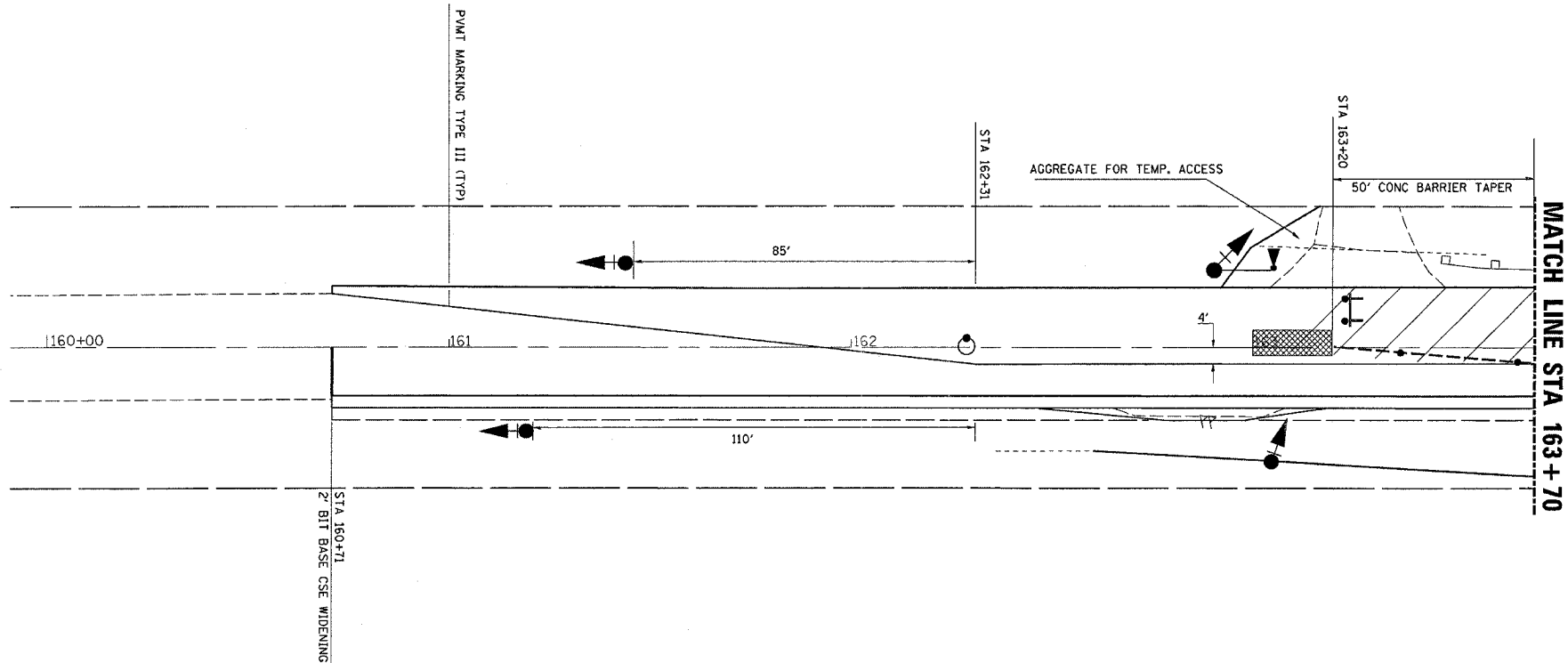
1. SEE STANDARD 701321 FOR SIGNAGE AND FOR OTHER DETAILS NOT SHOWN
2. STAGE I TRAFFIC SHALL OPERATE WITH THE EXISTING GUARDRAIL (LT) REMAINING IN PLACE.



ILLINOIS DEPARTMENT OF TRANSPORTATION
TRAFFIC CONTROL PROTECTION, STAGE I

8/31/2006 12:50:50 PM C:\p0\ecrs\6604003.dwg/115.dwg

F.A.P. RTE.	SECTION	COUNTY	TOTAL SHEETS	SHEET NO.
635	(105)BR-2	KANKAKEE	25	13
STA. _____ TO STA. _____		FED. ROAD DIST. NO. ILLINOIS FED. AID PROJECT		



**STAGE I
SEQUENCE OF OPERATIONS**

1. INSTALL TEMPORARY TRAFFIC SIGNALS, ATTENUATORS, TEMPORARY CONCRETE BARRIERS, DRUMS, ALL OTHER ITEMS AS PER THESE DETAILS AND AS PER LANE CLOSURE 2L, 2W, BRIDGE REPAIR WITH BARRIER STANDARD 701321, BEGIN OPERATING UNDER STAGE I TRAFFIC CONDITIONS.
2. REMOVE EXISTING PAVEMENT, AGGREGATE SHOULDERS, GUARDRAIL & TRAFFIC BARRIER TERMINALS, EXCAVATE, AND REMOVE PORTION OF EXISTING STRUCTURE.
3. CONSTRUCT NEW PORTION OF PROPOSED BOX CULVERT, BACKFILL, COMPACT, PAVEMENT, BITUMINOUS BASE COURSE, AND ROUGH GRADING OF DITCHES.

- NOTES:**
1. SEE STANDARD 701321 FOR SIGNAGE AND FOR OTHER DETAILS NOT SHOWN
 2. STAGE I TRAFFIC SHALL OPERATE WITH THE EXISTING GUARDRAIL (LT) REMAINING IN PLACE.

	TRAFFIC SIGNAL W/ BACKPLATE
	STEADY BURNING LIGHTS AND DOUBLE VERTICAL PANELS
	DOUBLE VERTICAL PANEL
	TYPE C BIDIRECTIONAL REFLECTOR
	IMPACT ATTENUATOR
	DRUM WITH STEADY BURNING LIGHT
	WORK AREA
	TEMPORARY CONCRETE BARRIER
	MICROWAVE DETECTOR
	BITUMINOUS BASE COURSE WIDENING (PRE STAGE I)
	TYPE III BARRICADE

ILLINOIS DEPARTMENT OF TRANSPORTATION
**TRAFFIC CONTROL
PROTECTION, STAGE II**

8/31/2006 12:50:58 PM c:\prj\ecr\66456\0003\000111.s.dgn

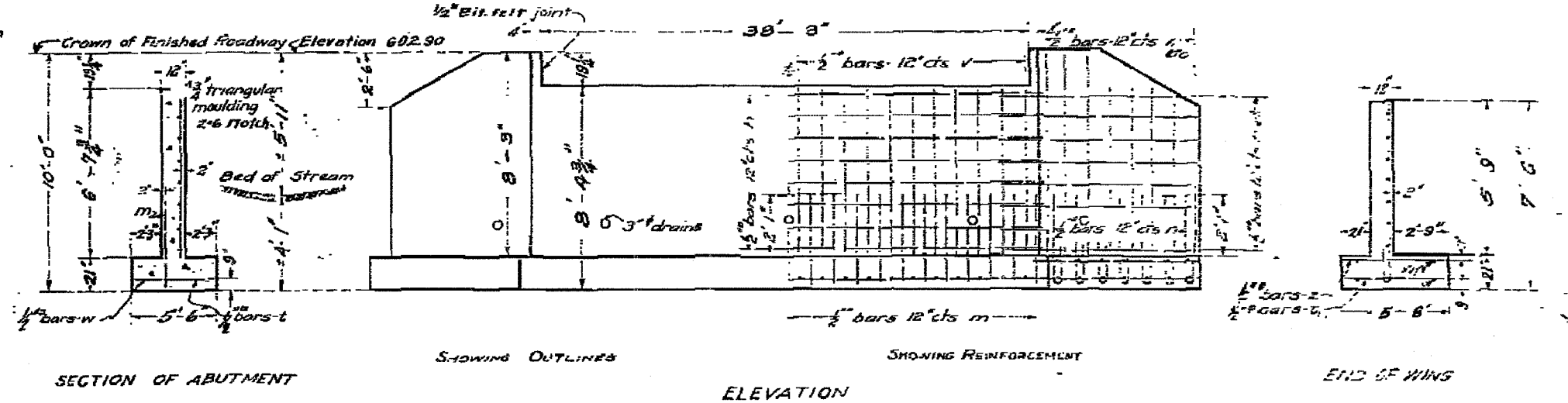
F.A.P. RTE.	SECTION	COUNTY	TOTAL SHEETS	SHEET NO.
635	0051BR-2	KANKAKEE	25	15
STA. _____		TO STA. _____		
FED. ROAD DIST. NO. _____		ILLINOIS FED. AID PROJECT _____		

B.M. M.E.W. in Root 40" Ash Lt. Sta. 164+33
 Elevation 601.74
 Existing Structures Slab-I beam Span 13'
 Rdy 16' To Be Removed By Contractor.

STATE OF ILLINOIS
 DEPARTMENT OF PUBLIC WORKS & BUILDINGS
 DIVISION OF HIGHWAYS
R.C. ABUTMENTS FOR SLAB BRIDGE
 HEIGHT OVER ALL 10 FEET

BOND ISSUE ROUTE NO.	COUNTY	SEC.	TOTAL SHEETS	SHEET NO.
114	Kankakee	105B	40	3

Sheet 12.2
 2 Sheets

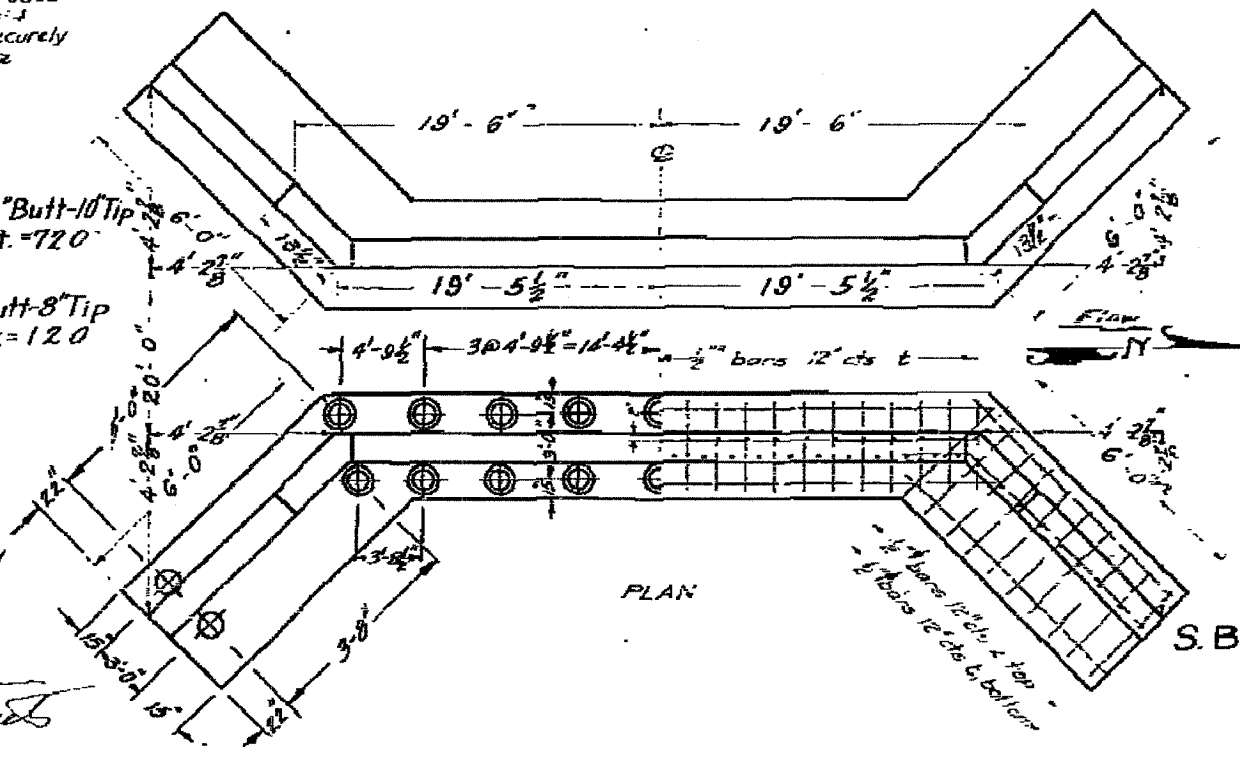


Notes
 Class A concrete shall be used throughout. Proportions 1:2 1/2:3
 All reinforcing steel to be securely wired in place before concrete is poured.

- 12 Ton Untreated Piles-12" Butt-10" Tip
 3/8 Required. Est. Lin. Ft. = 720
- 10 Ton Untreated Piles-10" Butt-8" Tip
 8 Required. Est. Lin. Ft. = 120

STANDARD	CHECKED - H.P. Duffell
	DRAWN - J.R. Kell
	CHECKED - H.P.D.
SPECIAL	ASSEMBLED - J.H. King
	CHECKED - J.H. King

DRAWN: *J.H. King*
 PASSED: *J.H. King*
 APPROVED: *Frank A. ...*
 CHIEF HIGHWAY ENGINEER



BILL OF MATERIAL

Bars	No.	Size	Length
1	78	1/2"	6'-6"
1/4	8	1/2"	7'-5"
1/2	16	1/2"	6'-3"
n	28	1/2"	20'-6"
1/2	28	1/2"	7'-6"
e	48	1/2"	5'-3"
t	28	1/2"	5'-3"
z	24	1/2"	5'-3"
w	8	1/2"	21'-0"
1/4	16	1/2"	7'-6"
n	24	1/2"	21'-3"
m	78	1/2"	3'-0"

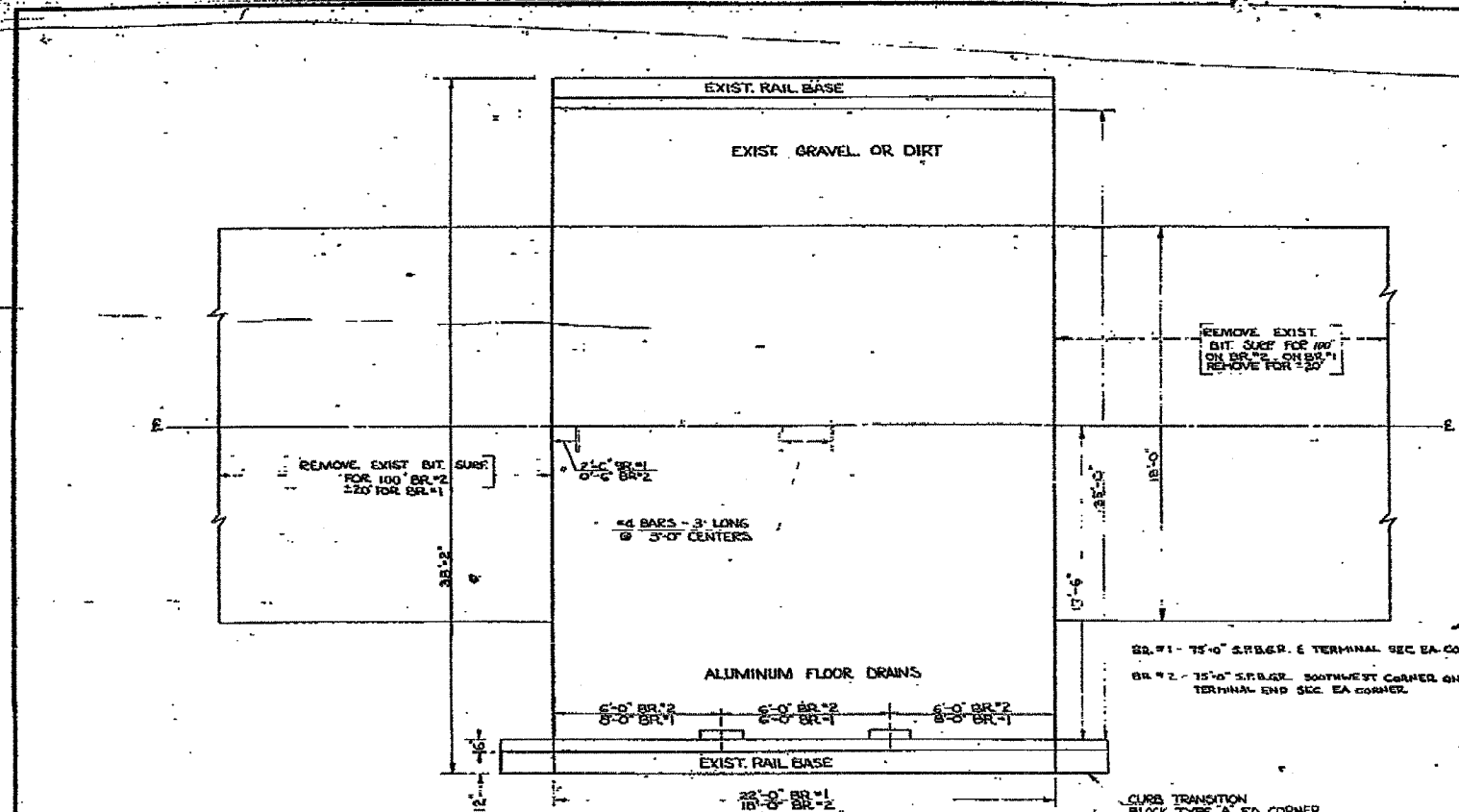
Reinforcing Steel Lbs 2750
 Concrete Cu Yds 60.7

S.B.I. ROUTE 114 SEC 105B
 KANKAKEE COUNTY
 STATION 163+96

ILLINOIS DEPARTMENT OF TRANSPORTATION
EXISTING PLANS
1 OF 3
INFORMATION ONLY

F.A.P. RTE.	SECTION	COUNTY	TOTAL SHEETS	SHEET NO.
635	1051BR-2	KANKAKEE	25	16
STA.		TO STA.		
FED. ROAD DIST. NO.		ILLINOIS FED. AID PROJECT		

ROUTE NO.	SECTION	COUNTY	PROJECT	SHEET
105	105	KANKAKEE	90	39



SUMMARY OF QUANTITIES - BR-1 & BR-2

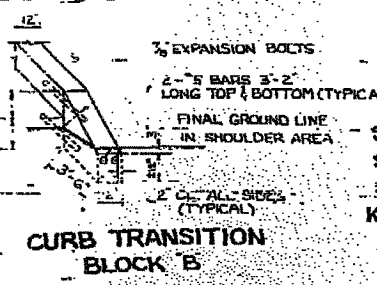
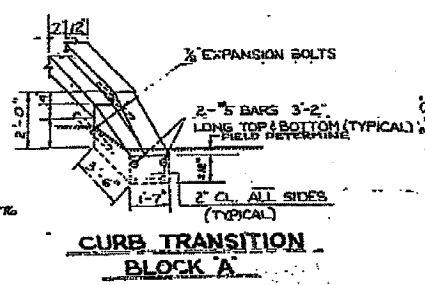
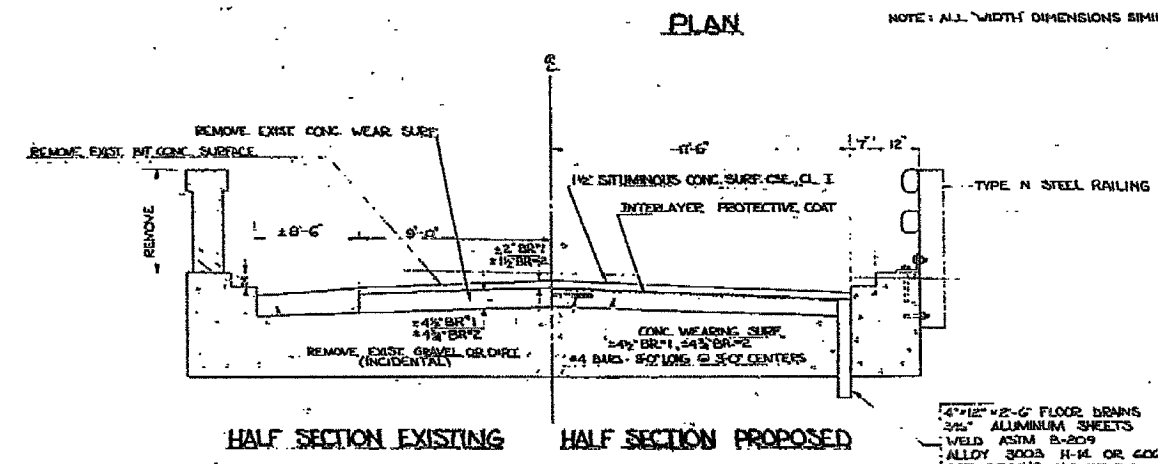
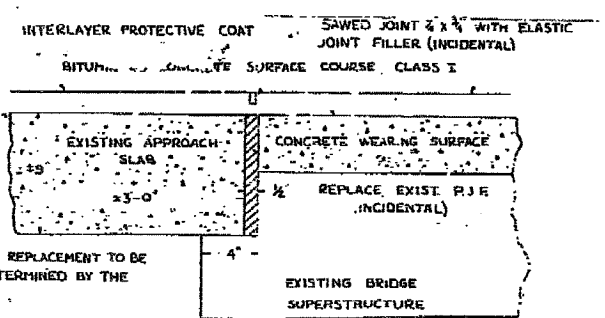
ITEM	UNIT	QUANTITY
503001 FLOOR DRAINS	EA.	8.0
210178 INTERLAYER PROTECTIVE COAT	SQ.YD.	156.0
512001 REINFORCEMENT BARS	LEBS.	28.0
617011 BRIDGE WEARING SURFACE REMOVAL	SQ.YD.	80.0
617008 BIT. CONC. SURF. REMOVAL	SQ.YD.	480.0
X50403 BRIDGE CONC. WEARING SURFACE	SQ.YD.	156.0
Z10221 ELASTIC JOINT SEALER	LN.FT.	72.0
A06008 BITUMINOUS CONC. SURFACE, CSE., CL. I	TON	13.0
XZ1014 TRAFFIC CONTROL (PROT. STD. Z309	EA.	2.0
G18001 PAVEMENT REPLACEMENT	SQ.YD.	24.0
SC1035 BRIDGE HANDRAIL REMOVAL	LN.FT.	80.0
503008 TYPE 'N' STEEL PILING	LN.FT.	60.0

GENERAL NOTES

All materials, labor and earth excavation required for all construction of the curb transition blocks shall be incidental.

It shall be the responsibility of the Contractor to verify all dimensions and conditions existing in the field prior to construction and ordering of materials.

TREATMENT AT ABUTMENTS

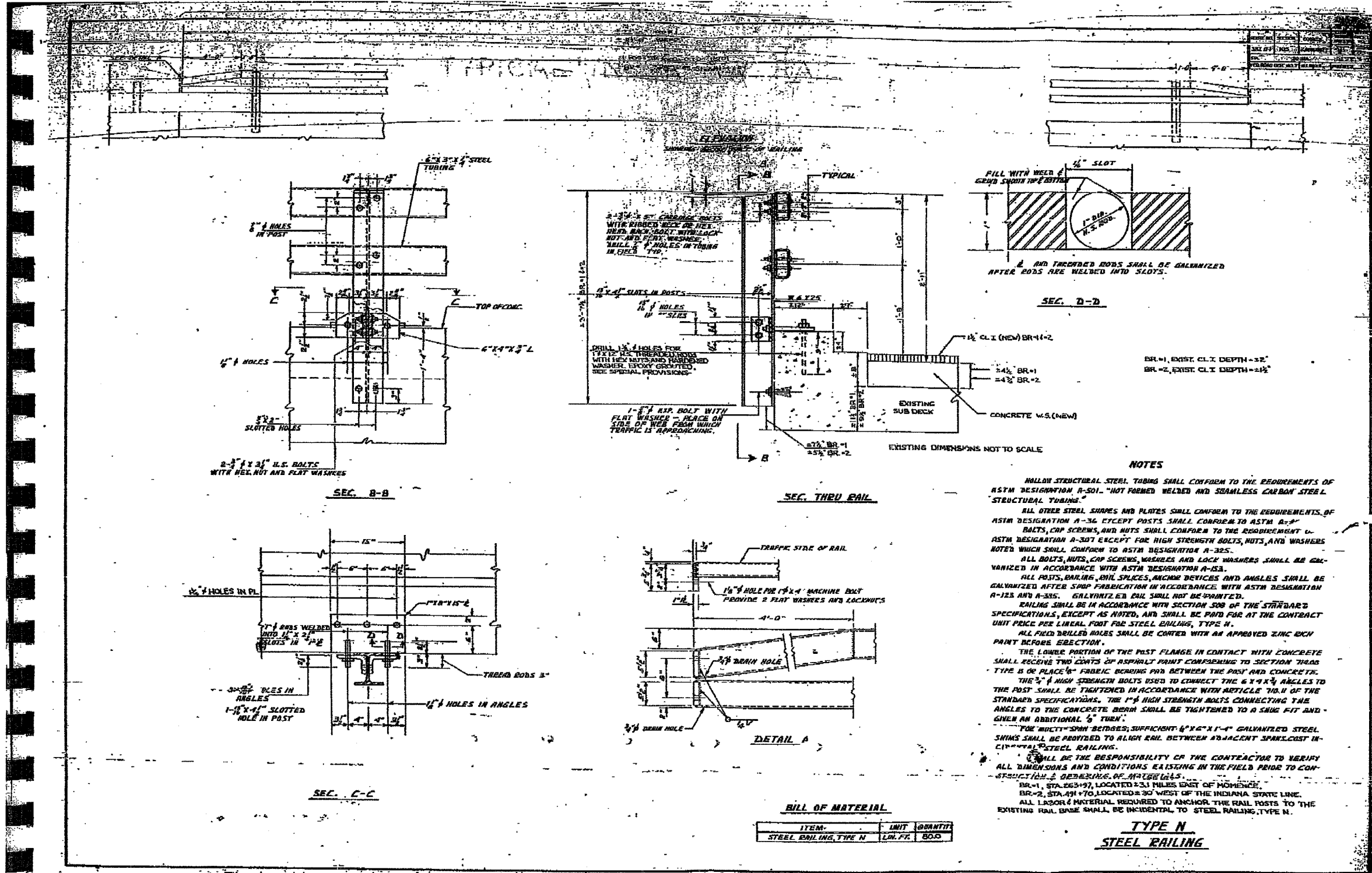


SBI ROUTE 114
SECTION 105 R/W BR
STATIONS 267+71.49 TO
KANKAKEE COUNTY
BRIDGES NO. 112

ILLINOIS DEPARTMENT OF TRANSPORTATION

EXISTING PLANS
2 OF 3
INFORMATION ONLY

F.A.P. RTE.	SECTION	COUNTY	TOTAL SHEETS	SHEET NO.
635	005/BR-2	KANKAKEE	25	17
STA. _____		TO STA. _____		
FED. ROAD DIST. NO. _____ ILLINOIS FED. AID PROJECT				



ILLINOIS DEPARTMENT OF TRANSPORTATION
EXISTING PLANS
3 OF 3
INFORMATION ONLY

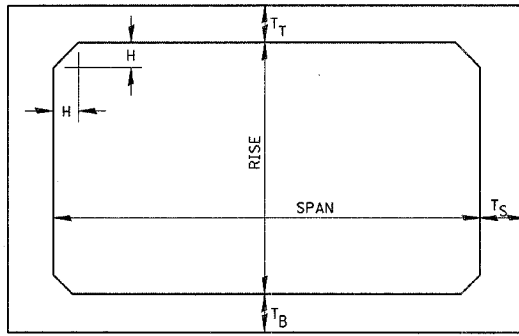
8/31/2006 11:17:32 AM
 C:\p00\sect5\0204005\06r0115.dgn

F.A.P. RTE.	SECTION	COUNTY	TOTAL SHEETS	SHEET NO.
635	(105)BR-2	KANKAKEE	25	18
STA.		TO STA.		
FED. ROAD DIST. NO. ILLINOIS FED. AID PROJECT				

GENERAL NOTES:

MINIMUM COVER FOR BOX CULVERTS SHALL BE 6".

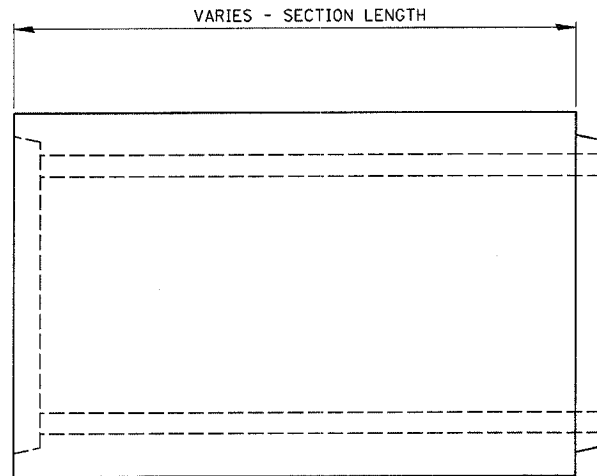
NOTE: THE HAUNCH DIMENSION H, IS EQUAL TO THE WALL THICKNESS TS.



TYPICAL BOX SECTION

SPAN, FEET	T _T , INCHES		T _B , INCHES		T _S , INCHES	
	M 259	M 273	M 259	M 273	M 259	M 273
3	4	7	4	6	4	4
4	5	7 1/2	5	6	5	5
5	6	8	6	7	6	6
6	7	8	7	7	7	7
7	8	8	8	8	8	8
8	8	8	8	8	8	8
9	9	9	9	9	9	9
10	10	10	10	10	10	10
11	11	11	11	11	11	11
12	12	12	12	12	12	12

TYPICAL THICKNESSES



ELEVATION

WATERWAY INFORMATION TABLE

(Revised/Approved:09/01/2004)

Route: FAP 635 (IL 114) S.N. (Exist.): 046-0104
 Section: (105) BR-2 S.N. (Prop.):
 County: Kankakee Waterway: Yellowhead Creek

Drainage Area = 0.72 sq. mi. Exist. Low Grade El. = 626.72 @ Sta. 257+73 Prop. Low Grade El. = 626.73 @ Sta. 257+73

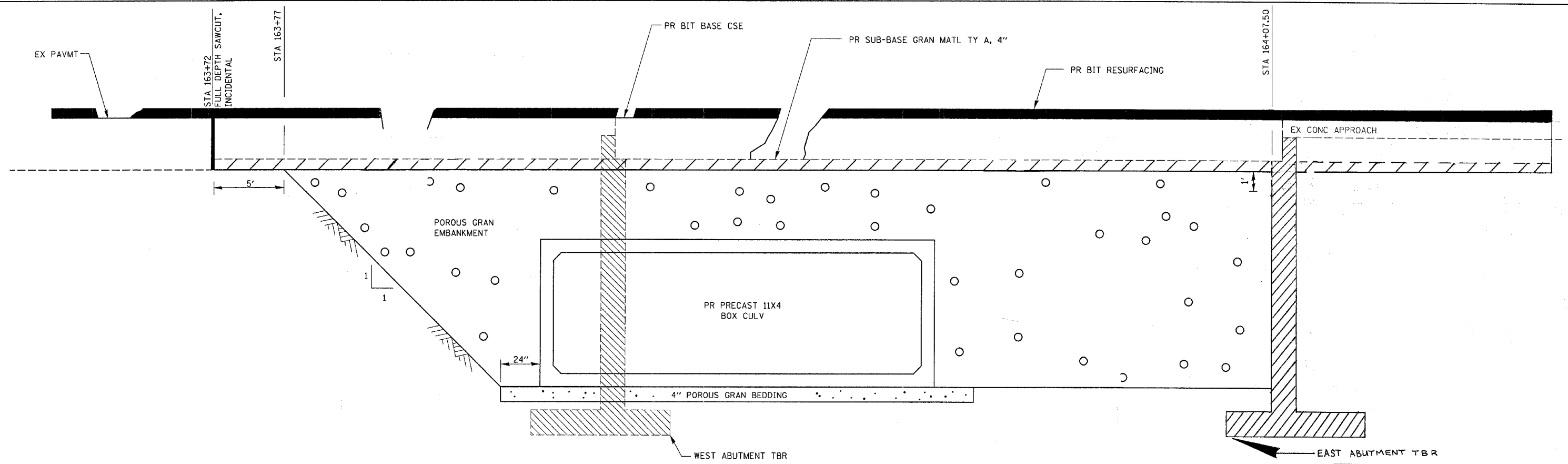
FLOOD	FREQUENCY (yr.)	Q (cfs)	OPENING - sq. ft.		NAT. H.W.E.	HEAD - ft.		HEADWATER EL.**	
			Exist.*	Prop.*		Exist.	Prop.	Exist.	Prop.
	10	67	66	44	625.48	1.20	1.14	626.70	626.62
Design	50	96	66	44	625.87	1.03	0.91	626.90	626.78
Base	100	107	66	44	626.00	1.00	0.85	627.00	626.85
Overtopping (exist.)	30	85	66		625.74	1.07		626.80	
Overtopping (prop.)	40	91		44	625.81		0.94		626.75

10-year velocity through existing struct. = 1.08 fps 10-year velocity through prop. culvert = 1.69 fps

*Gross Area Opening

**Taken at the upstream face of structure. Reflects the presence of a 36" pipe culvert downstream.

PRECAST CONCRETE BOX SECTION



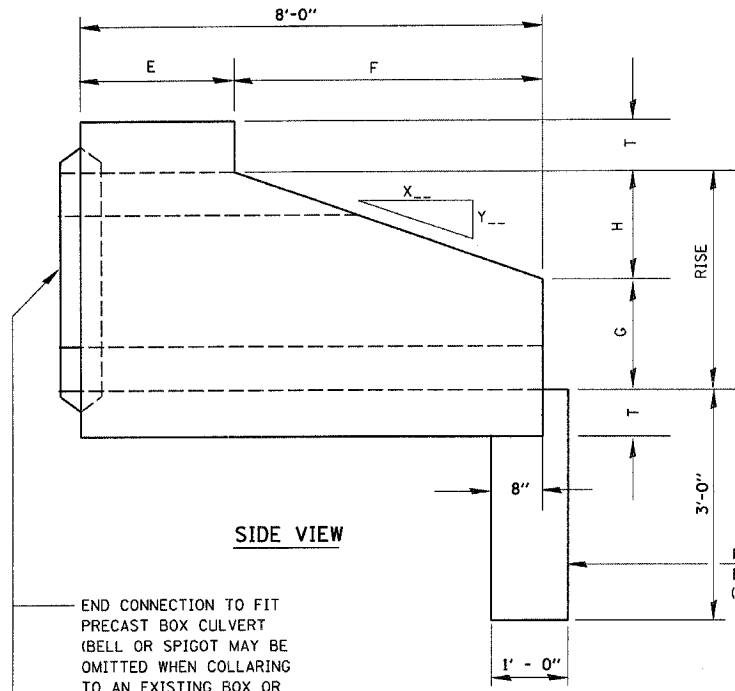
SECTION THROUGH PRECAST BOX CULVERT

ILLINOIS DEPARTMENT OF TRANSPORTATION
DETAILS

8/31/2006 12:50:10 PM c:\pr\proj\635\664002\detail1.s.dgn

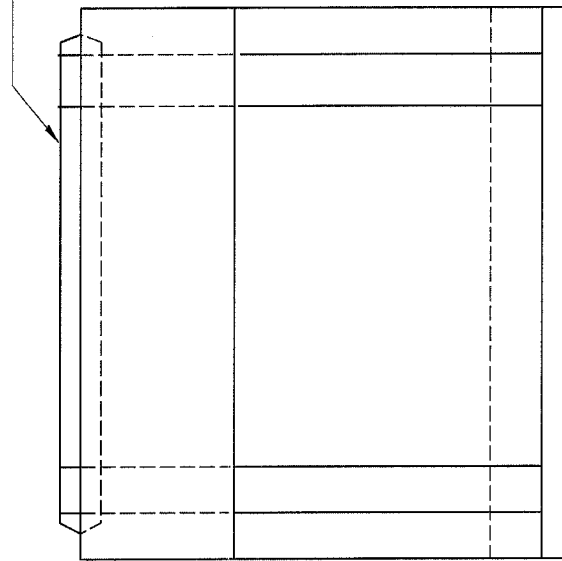
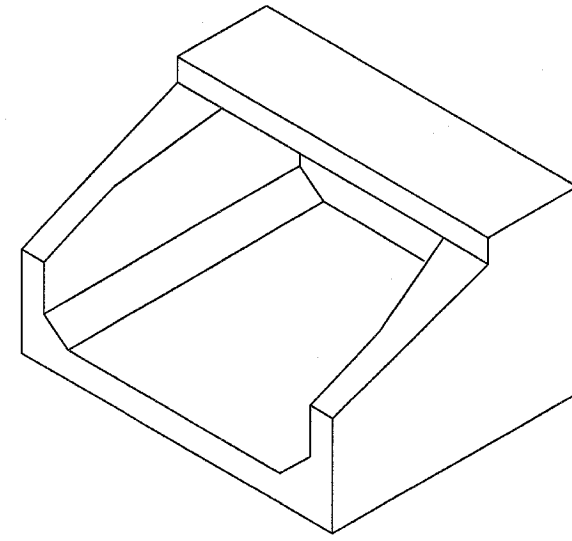
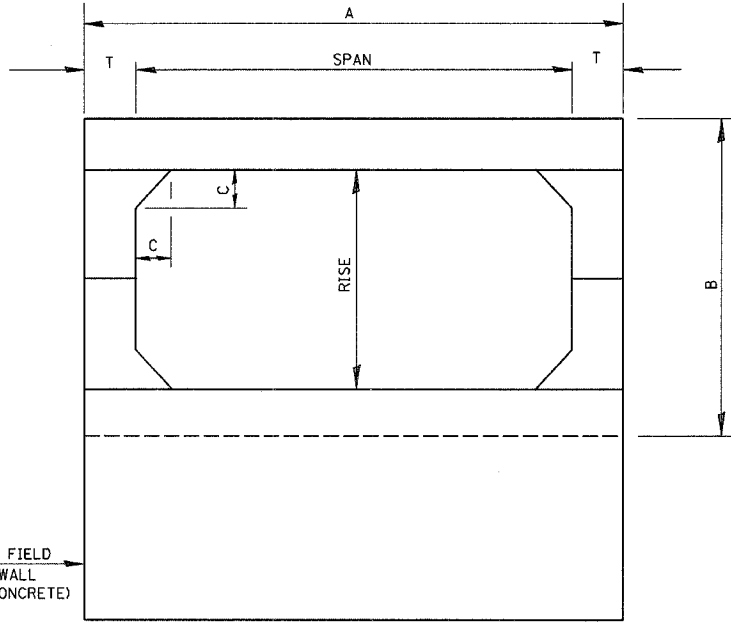
TIP EL 606.54 TY

F.A.P. RTE.	SECTION	COUNTY	TOTAL SHEETS	SHEET NO.
635	(105)BR-2	KANKAKEE	25	19
STA.		TO STA.		
FED. ROAD DIST. NO.		ILLINOIS	FED. AID PROJECT	



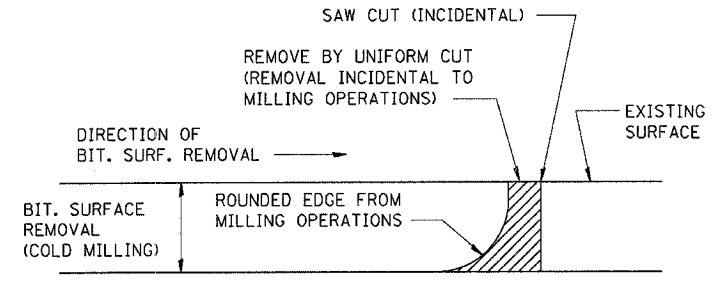
END CONNECTION TO FIT PRECAST BOX CULVERT (BELL OR SPIGOT MAY BE OMITTED WHEN COLLARING TO AN EXISTING BOX OR HEADWALL)

PRECAST OR FIELD POURED TOEWALL (CLASS S1 CONCRETE)



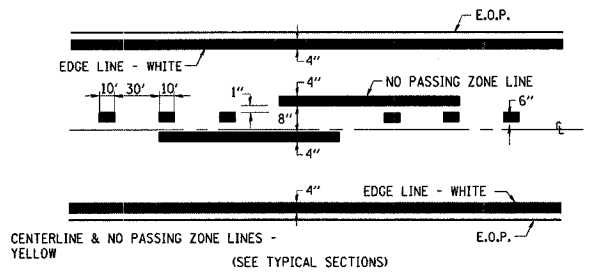
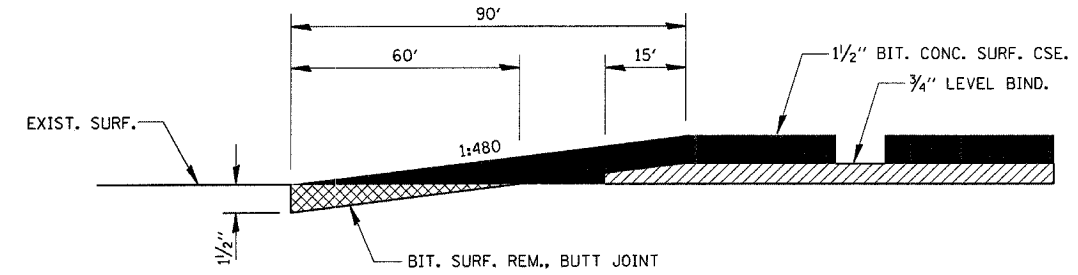
SPAN X RISE	T (INCHES)	A (FT.-IN.)	B (FT.-IN.)	C (INCHES)	E (FT.-IN.)	F (FT.-IN.)	G (FT.-IN.)	H (FT.-IN.)	SLOPE
2' X 2'	4	2 - 8	2 - 8	4	3 - 0	3 - 0	1 - 0	1 - 0	3 : 1
3' X 2'	4	3 - 8	2 - 8	4	3 - 0	3 - 0	1 - 0	1 - 0	3 : 1
3' X 3'	4	3 - 8	3 - 8	4	2 - 0	4 - 0	1 - 8	1 - 4	3 : 1
4' X 2'	5	4 - 10	2 - 10	5	3 - 0	3 - 0	1 - 0	1 - 0	3 : 1
4' X 3'	5	4 - 10	3 - 10	5	2 - 0	4 - 0	1 - 8	1 - 4	3 : 1
4' X 4'	5	4 - 10	4 - 10	5	2 - 0	4 - 0	2 - 0	2 - 0	2 : 1
5' X 2'	6	6 - 0	3 - 0	6	3 - 0	3 - 0	1 - 0	1 - 0	3 : 1
5' X 3'	6	6 - 0	4 - 0	6	2 - 0	4 - 0	1 - 8	1 - 4	3 : 1
5' X 4'	6	6 - 0	5 - 0	6	2 - 0	4 - 0	2 - 0	2 - 0	2 : 1
5' X 5'	6	6 - 0	6 - 0	6		4 - 0	3 - 0	2 - 0	2 : 1
6' X 2'	7	7 - 2	3 - 2	7	3 - 0	3 - 0	1 - 0	1 - 0	3 : 1
6' X 3'	7	7 - 2	4 - 2	7	2 - 0	4 - 0	1 - 8	1 - 4	3 : 1
6' X 4'	7	7 - 2	5 - 2	7	2 - 0	4 - 0	2 - 0	2 - 0	2 : 1
6' X 5'	7	7 - 2	6 - 2	7		4 - 0	3 - 0	2 - 0	2 : 1
7' X 3'	8	8 - 4	4 - 4	8		4 - 0	1 - 8	1 - 4	3 : 1
7' X 4'	8	8 - 4	5 - 4	8		4 - 0	2 - 0	2 - 0	2 : 1
7' X 5'	8	8 - 4	6 - 4	8		4 - 0	3 - 0	2 - 0	2 : 1
8' X 3'	8	9 - 4	4 - 4	8		4 - 0	1 - 8	1 - 4	3 : 1
8' X 4'	8	9 - 4	5 - 4	8		4 - 0	2 - 0	2 - 0	2 : 1
8' X 5'	8	9 - 4	6 - 4	8		4 - 0	3 - 0	2 - 0	2 : 1
9' X 3'	9	10 - 6	4 - 6	9		4 - 0	1 - 8	1 - 4	3 : 1
9' X 4'	9	10 - 6	5 - 6	9		4 - 0	2 - 0	2 - 0	2 : 1
9' X 5'	9	10 - 6	6 - 6	9		4 - 0	3 - 0	2 - 0	2 : 1
10' X 4'	10	11 - 8	5 - 9	10		4 - 0	2 - 0	2 - 0	2 : 1
11' X 4'	11	12 - 10	5 - 10	11		6 - 0	2 - 6	1 - 6	4 : 1

F.A.P. RTE.	SECTION	COUNTY	TOTAL SHEETS	SHEET NO.
635	(105)BR-2	KANKAKEE	25	20
STA. _____		TO STA. _____		
FED. ROAD DIST. NO. _____ ILLINOIS FED. AID PROJECT				

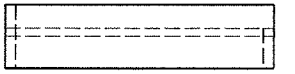


NOTE: WHEN MILLING OPERATIONS PRODUCE A ROUNDED EDGE, THEN A SAW CUT SHALL BE USED TO MANUFACTURE A PERPENDICULAR EDGE AS SHOWN IN THE DETAIL. THE ENGINEER SHALL BE THE SOLE JUDGE CONCERNING THE USE OF THIS DETAIL.

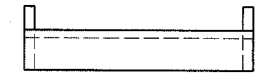
BITUMINOUS DETAIL AT BUTT JOINTS



PAVEMENT MARKING

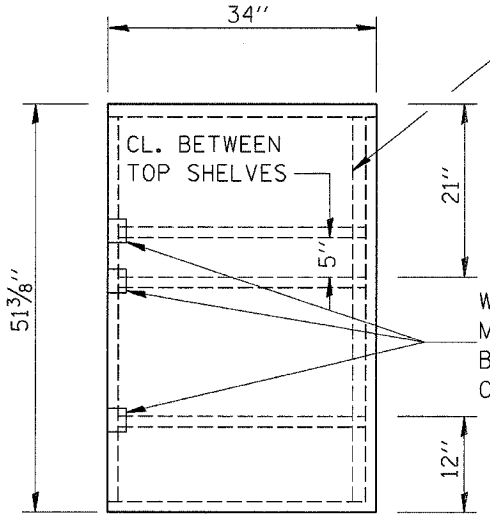


SHELF SIDE VIEW

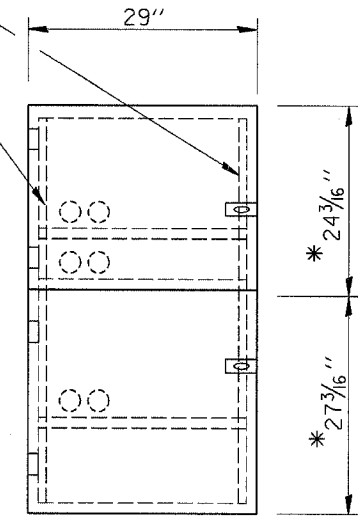


SHELF FRONT VIEW

1/2" X 1/2" FLAT STOCK WELD TO FORM DOOR FRAME AND ALSO AROUND PERIMETER OF EACH DOOR.



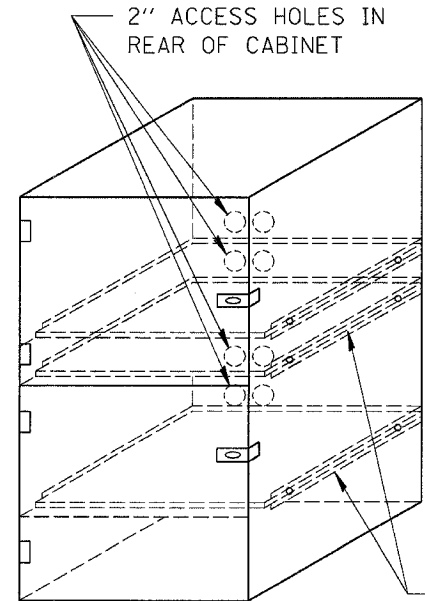
SIDE VIEW



FRONT VIEW

WELD BACKSTOP TO MAINTAIN 2" CLEARANCE BETWEEN SHELF AND CABINET

*ALLOWS FOR 1/8" CLEARANCE AT TOP AND BOTTOM OF CABINET AND BETWEEN DOORS.



FLAT STOCK DIMENSIONS VARY DEPENDING ON TYPE OF ROLLER ASSEMBLY.

LOCKABLE COMPUTER CABINET

- NOTES: 1. USE 16 GAUGE STEEL FOR CABINET.
- 2. THE TOP SHELF SHALL SLIDE IN OR OUT WITH THE TOP DOOR OPEN.
- 3. ALL HINGES AND HASPS WILL BE WELDED TO THE CABINET.
- 4. ALL EDGES SHALL BE GROUND SMOOTH.
- 5. TWO (2" DIA.) ACCESS HOLES WILL BE REQUIRED FOR EACH SHELF.
- 6. CABINET SHALL BE PAINTED WITH TWO COATS OF FLAT PAINT.
- 7. 2 EACH MATCHING KEY PADLOCKS, WITH 3 KEYS PROVIDED, MASTER MODEL 3 T OR EQUIVALENT.
- 8. 4 EACH PLAIN STEEL, NON-REMOVABLE PIN, NO HOLE 4"X4" SQUARE CORNER HINGES TO BE WELDED ON.
- 9. 2 EACH EXTRA HEAVY, PLAIN STEEL, FIXED STAPLE, NO HOLE, 7 1/4 " HASPS TO BE WELDED ON.

REVISIONS	
NAME	DATE

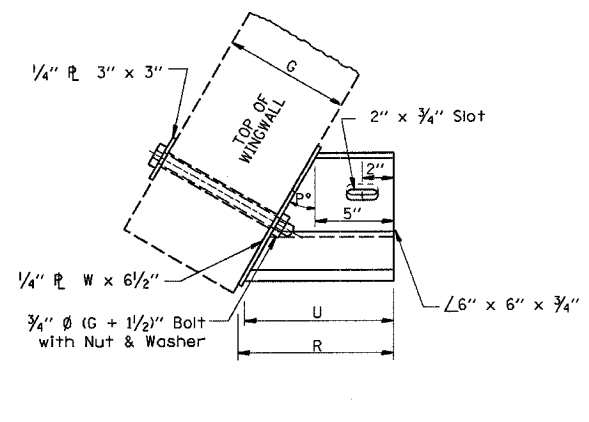
ILLINOIS DEPARTMENT OF TRANSPORTATION

DETAILS

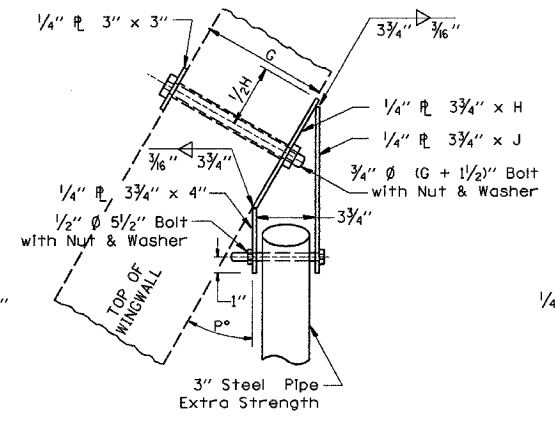
SCALE: VERT. _____ HORIZ. _____ DATE _____ DRAWN BY _____ CHECKED BY _____

8/31/2006 12:50:20 PM c:\proj\sect\6604003\detail15.dgn

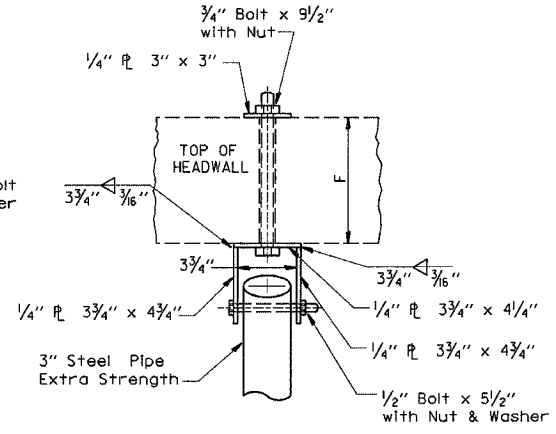
F.A.P. RTE.	SECTION	COUNTY	TOTAL SHEETS	SHEET NO.
635	(105)BR-2	KANKAKEE	25	21
STA. _____		TO STA. _____		
FED. ROAD DIST. NO. _____ ILLINOIS FED. AID PROJECT				



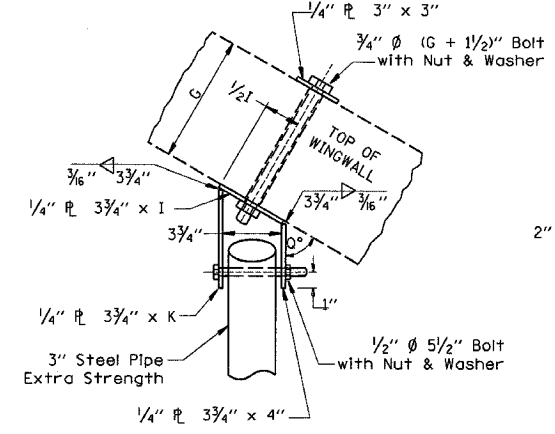
PLAN
END BRACKET ASSEMBLY - LEFT



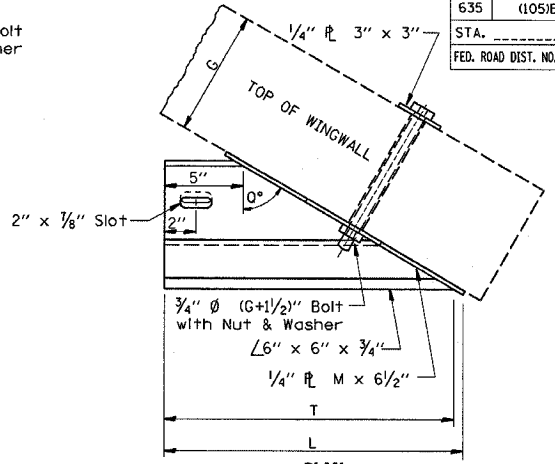
PLAN
WINGWALL BRACKET ASSEMBLY - LEFT



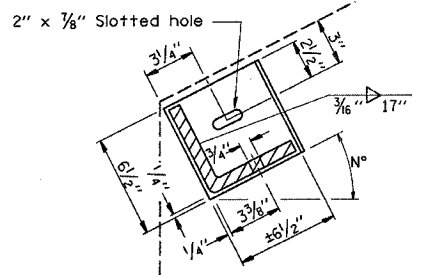
PLAN
HEADWALL BRACKET ASSEMBLY



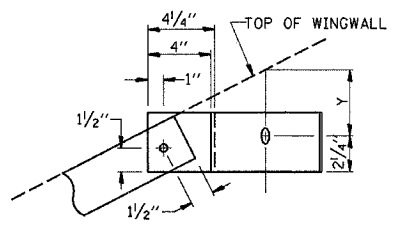
PLAN
WINGWALL BRACKET ASSEMBLY - RIGHT



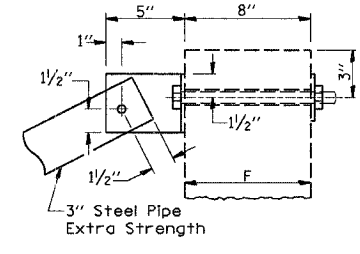
PLAN
END BRACKET ASSEMBLY - RIGHT



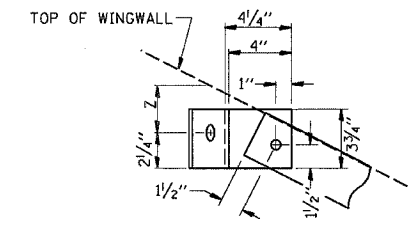
SECTION THRU
DETAIL A



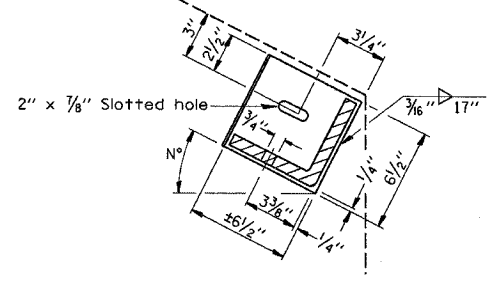
SECTION THRU
DETAIL B



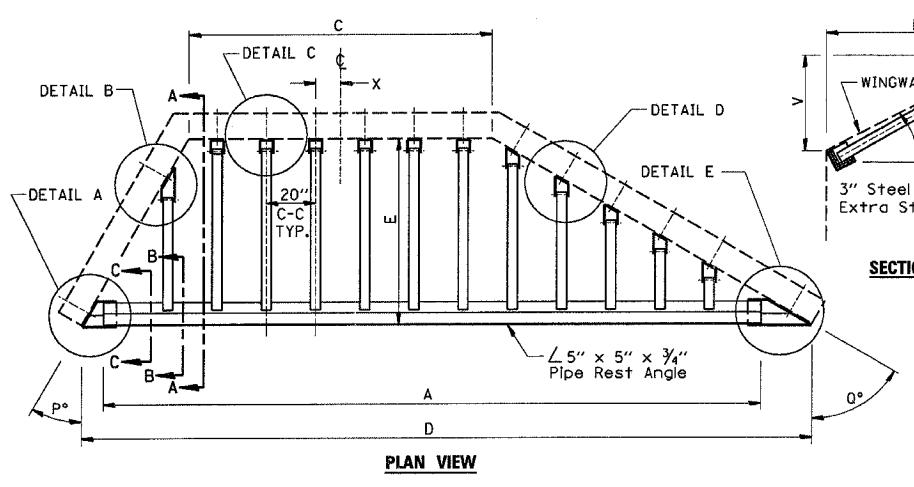
SECTION THRU
DETAIL C



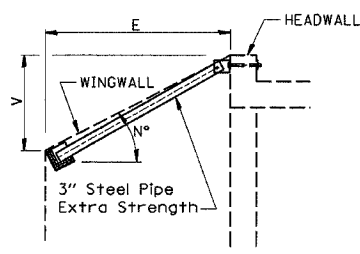
SECTION THRU
DETAIL D



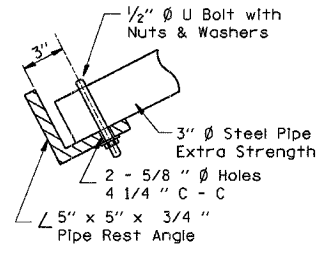
SECTION THRU
DETAIL E



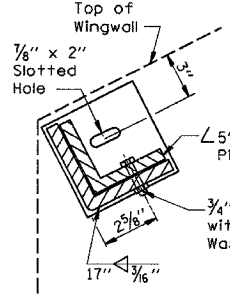
PLAN VIEW



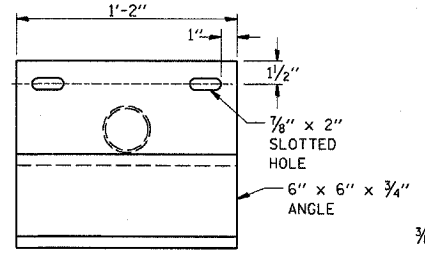
SECTION A-A



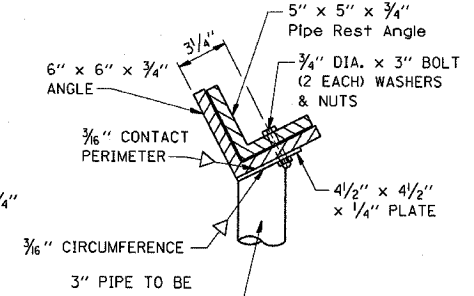
SECTION B-B



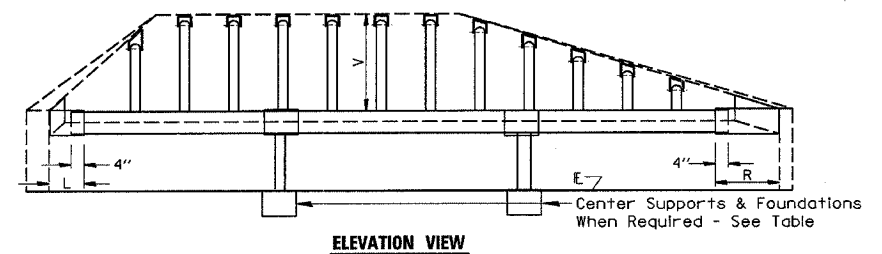
SECTION C-C



PLAN VIEW OF SUPPORT



END VIEW OF SUPPORT

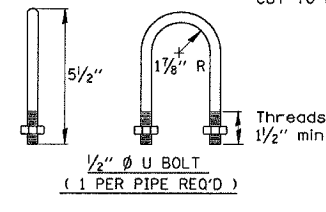


ELEVATION VIEW

Center Supports & Foundations
When Required - See Table

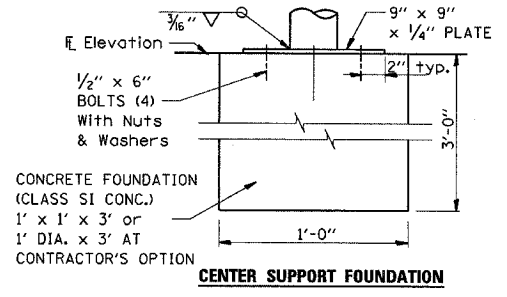
GENERAL NOTES

BOLTS AND NUTS SHALL CONFORM TO ASTM A 307. ALL BOLTS SHALL HAVE WASHERS AT EACH END. HOLES SHALL BE 1/16" OVERSIZE UNLESS OTHERWISE NOTED EXCEPT IN CONCRETE WHICH SHALL BE 1/8" OVERSIZE. ANGLES AND STEEL PLATES SHALL CONFORM TO AASHTO M183. STEEL PIPES SHALL CONFORM TO ASTM A53 GRADE B OR ASTM A 501. STEEL PIPES, ANGLES AND PLATES SHALL BE HOT DIPPED GALVANIZED CONFORMING TO THE REQUIREMENTS OF AASHTO M111. BOLTS, NUTS AND WASHERS SHALL BE HOT DIPPED GALVANIZED CONFORMING TO THE REQUIREMENTS OF AASHTO M232. THE APPROXIMATE WEIGHT OF STEEL GIVEN IN TABLES INCLUDES PLATES, ANGLES, AND PIPES. BOLTS, NUTS AND WASHERS ARE NOT INCLUDED. ALL DIMENSIONS ARE TO BE VERIFIED IN THE FIELD. CUTTING OF THE EXTRA STRENGTH PIPE AND ANGLES TO THE EXACT LENGTHS AND DRILLING HOLES IS TO BE DONE IN THE FIELD. THIS WORK SHALL BE PAID FOR AT THE CONTRACT UNIT PRICE "EACH" FOR GRATING FOR CONCRETE HEADWALLS IN PLACE, AND SHALL INCLUDE FABRICATION PAINTING, CENTER SUPPORTS WHEN REQUIRED, AND INSTALLATION OF THE GRATING AS DETAILED.



1/2" Ø U BOLT
(1 PER PIPE REQ'D)

TIP TO TIP OF WINGWALLS (DIMENSION "D")	NUMBER OF SUPPORTS REQUIRED	LOCATION
0'-0" TO 12'-6"	0	--
12'-6" TO 18'-0"	1	CENTER OF SPAN
18'-0" TO 24'-0"	2	1/3 OF SPAN
24'-0" TO 30'-0"	3	1/4 OF SPAN



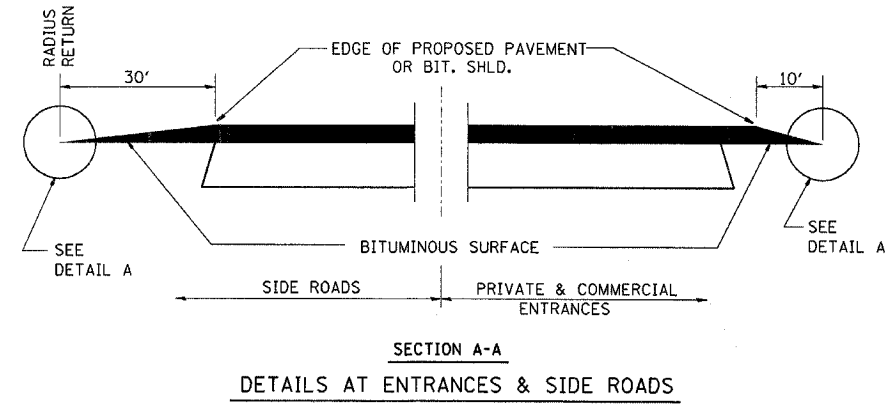
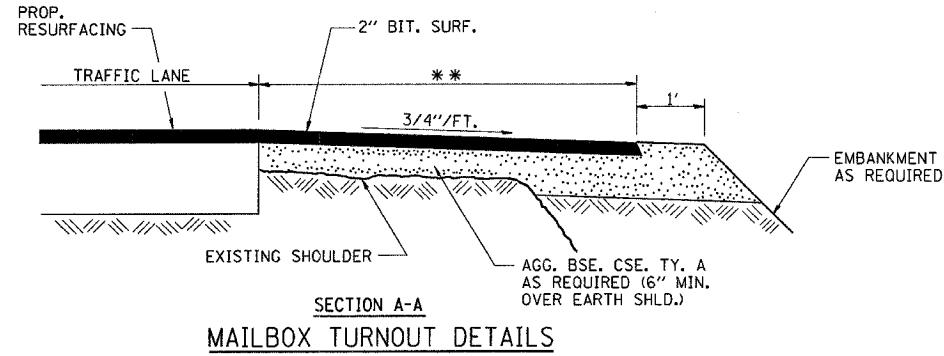
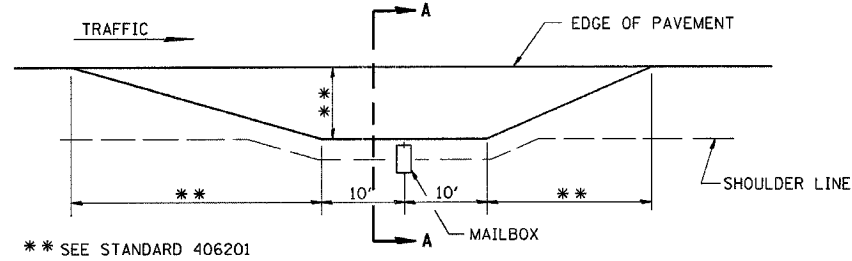
CENTER SUPPORT FOUNDATION

ILLINOIS DEPARTMENT OF TRANSPORTATION

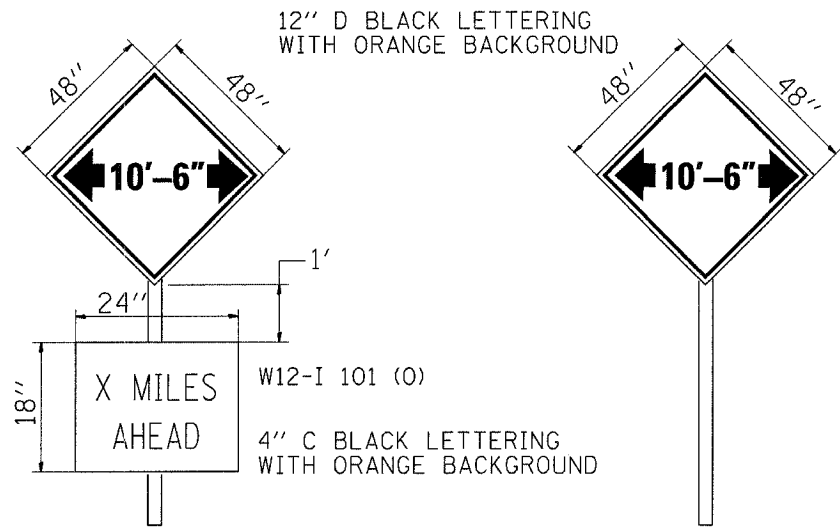
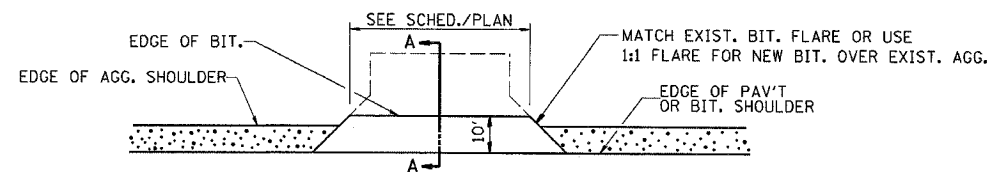
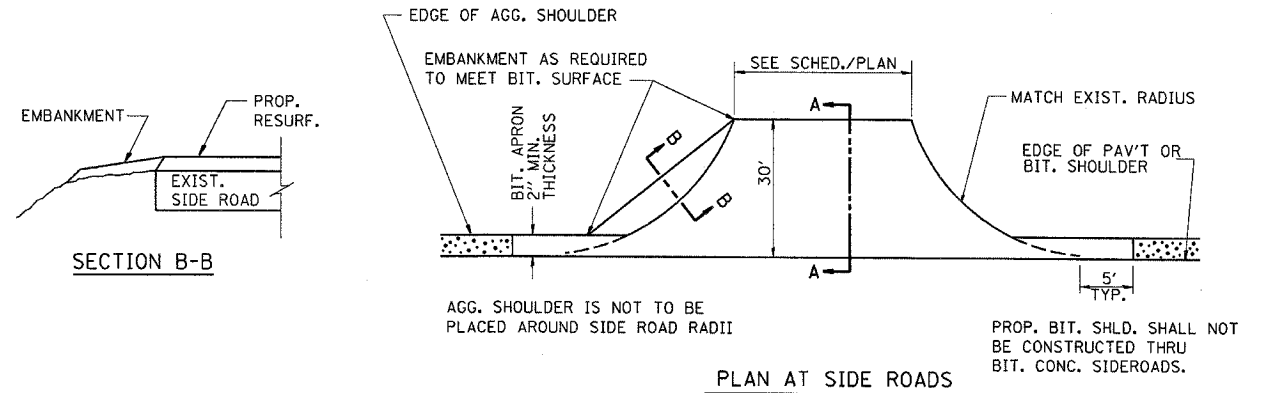
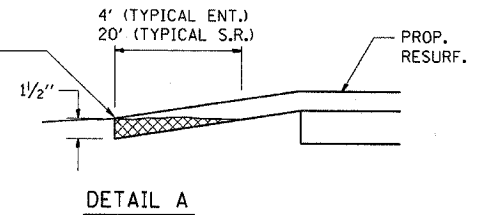
DETAILS

SCALE: VERT. _____
HORIZ. _____
DATE _____ DRAWN BY _____
CHECKED BY _____

F.A.P. RTE.	SECTION	COUNTY	TOTAL SHEETS	SHEET NO.
635	(105)BR-2	KANKAKEE	25	22
STA. _____		TO STA. _____		
FED. ROAD DIST. NO. _____ ILLINOIS FED. AID PROJECT				



THE COST OF REMOVAL AT EXISTING BIT. OR P.C.C. LOCATIONS SHALL BE PAID FOR PER SQ. YD. BY THE APPROPRIATE PAY ITEM. REMOVAL AT EXISTING AGG. LOCATIONS SHALL BE INCIDENTAL TO THE BITUMINOUS. A-3 LOCATIONS SHALL BE FEATHER TAPERED.



THE CONTRACTOR SHALL BE RESPONSIBLE FOR FINISHING, ERECTING AND MAINTAINING THESE SIGNS. TO BE POST MOUNTED. A TOTAL OF THREE SIGNS NEEDED- 2 ON US 41 IN INDIANA (ONE NB AND ONE SB LANE JUST NORTH OF INDIANA 10). PLACE THE OTHER SIGN ON INDIANA 10.

THE RESIDENT ENGINEER WILL NOTIFY DISTRICT 3 BUREAU OF OPERATIONS 14 CALENDAR DAYS PRIOR TO INSTALLING THESE SIGNS.

THE CONTRACTOR SHALL BE RESPONSIBLE FOR COORDINATING WITH THE ENGINEER TO MEET THIS REQUIREMENT.

WIDTH RESTRICTION SIGNING DETAILS

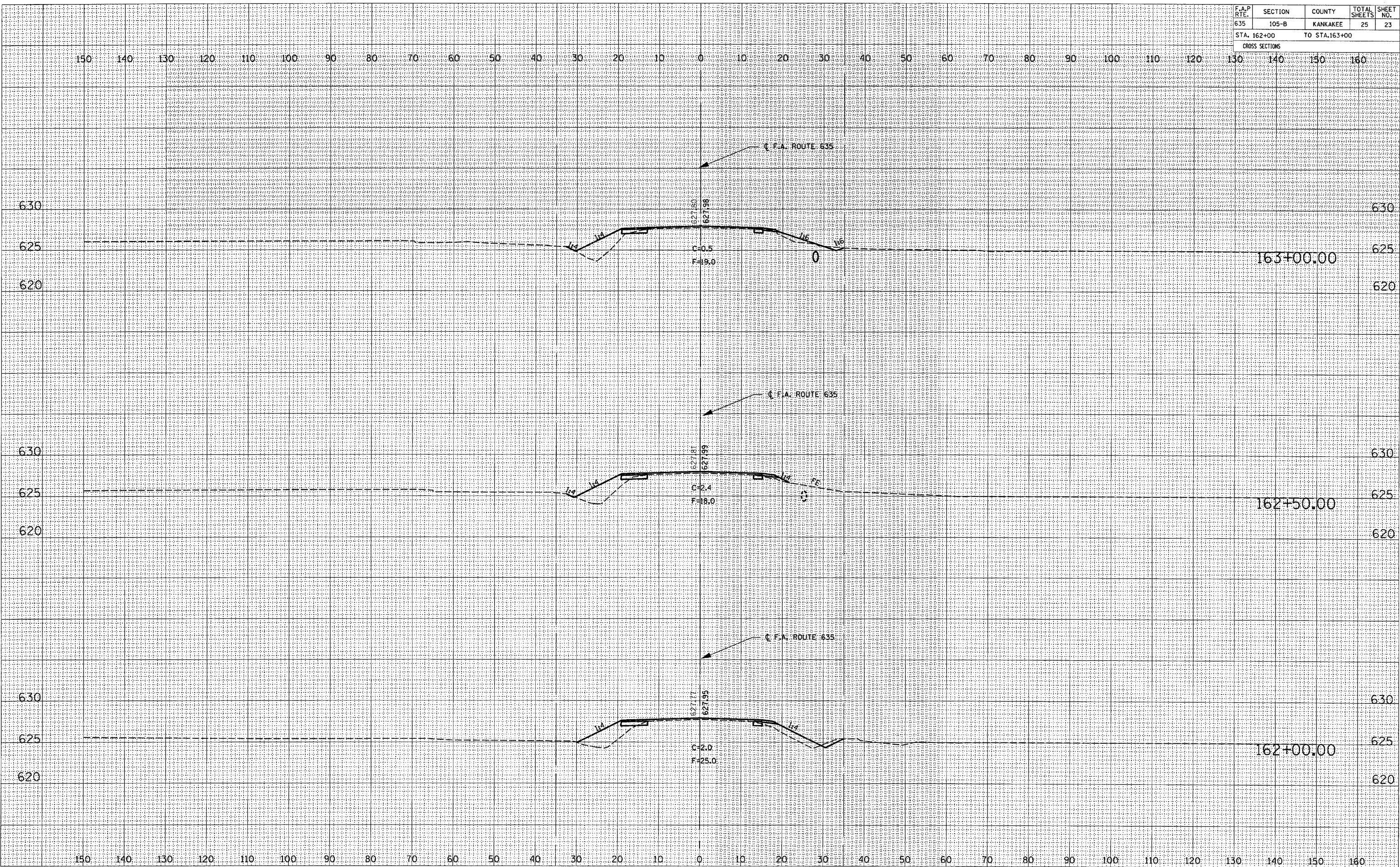
ILLINOIS DEPARTMENT OF TRANSPORTATION

DETAILS

SCALE: VERT. _____
HORIZ. _____
DATE _____ DRAWN BY _____
CHECKED BY _____

F.A.P. RTE.	SECTION	COUNTY	TOTAL SHEETS	SHEET NO.
635	105-B	KANKAKEE	25	23
STA. 162+00 TO STA. 163+00			CROSS SECTIONS	

FINAL SURVEY	DATE
BY	
SUPERVED	
APPROVED	
NOTE BOOK	
NO.	



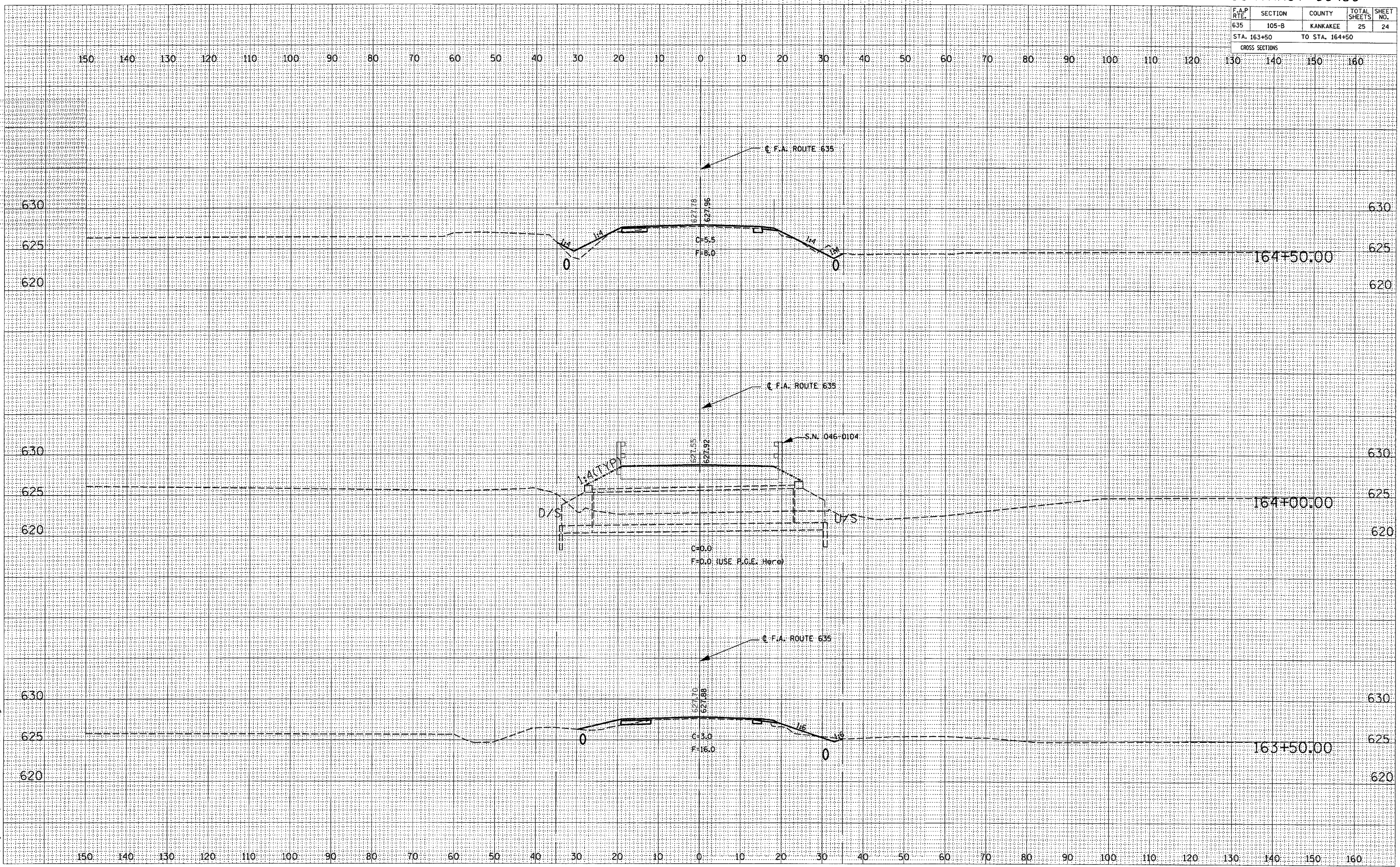
CROSS SECTIONS
STA 162+00 TO STA 163+00

8/31/2006 12:57:38 PM
c:\proj\ects\904003\consul\1\162r04.dgn

F.A.P. RTE.	SECTION	COUNTY	TOTAL SHEETS	SHEET NO.
635	105-B	KANKAKEE	25	24

STA. 163+50 TO STA. 164+50
CROSS SECTIONS

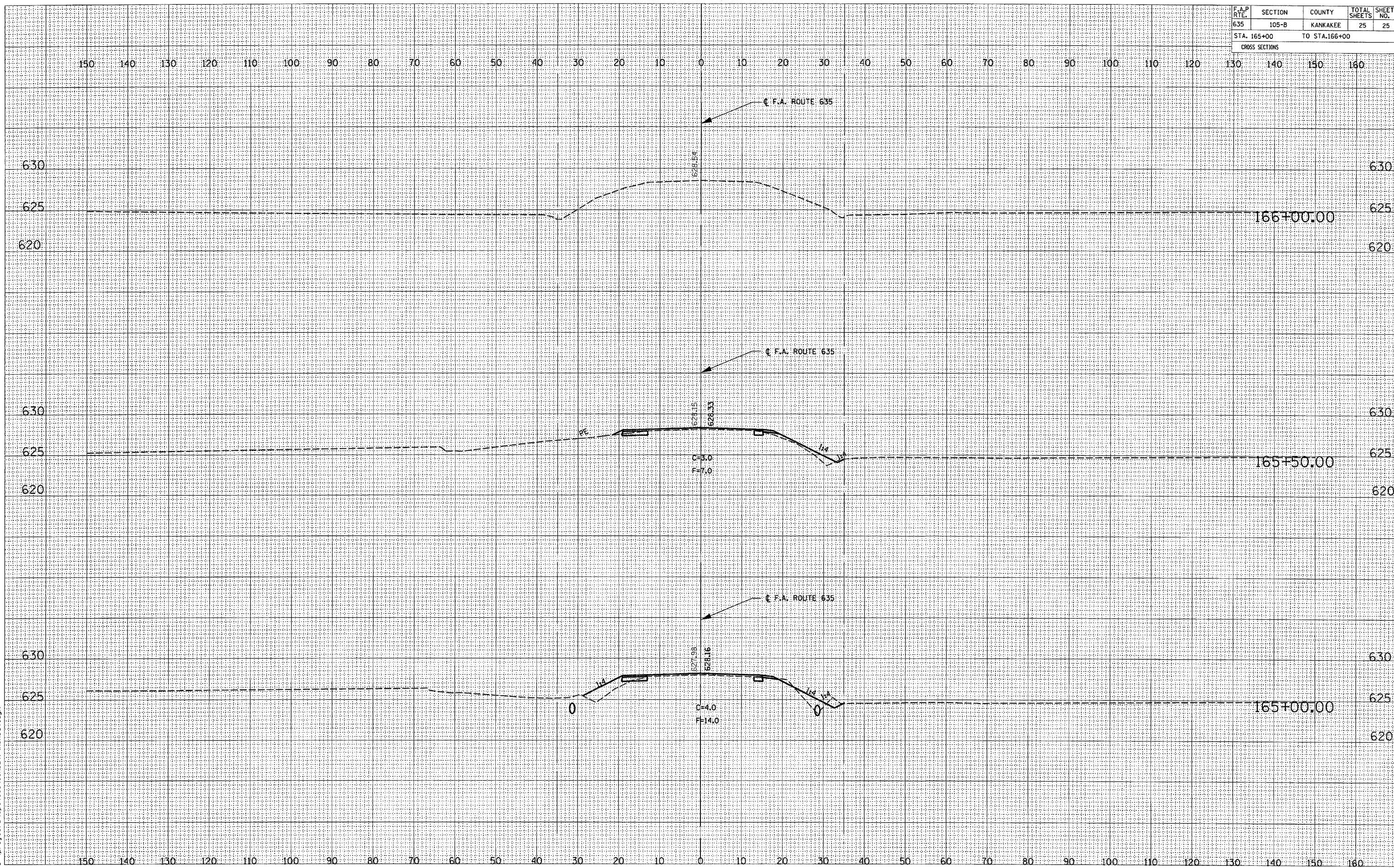
DATE	
BY	
FINAL SURVEY	
PLOTTED	
TEMPLATE	
NOTE BOOK	
NO.	



8/31/2006 12:57:54 PM c:\pro\ecfs\ep04003\consul\1\shhod.dgn

F.A.P. RTE.	SECTION	COUNTY	TOTAL SHEETS	SHEET NO.
635	105-B	KANKAKEE	25	25
STA. 165+00		TO STA. 166+00		
CROSS SECTIONS				

FINAL SURVEY	SURVEYED	DATE
NOTE BOOK	PLOTTED	
NO.	TEMPLATE	
	AREAS CHECKED	



8/31/2006 12:57:20 PM
 c:\projects\66456\105-B\165+00.dgn