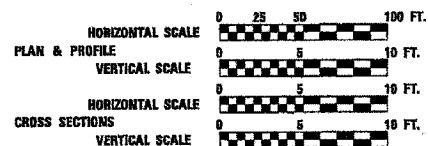


INDEX OF SHEETS

SHEET NO.	DESCRIPTION
4.	COVER SHEET AND INDEX OF SHEETS
5.	GENERAL NOTES
6.	SUMMARY OF QUANTITIES
7. - 9.	TYPICAL SECTIONS
10. - 11.	SCHEDULE OF QUANTITIES
12. - 14.	PLAN AND PROFILE SHEETS
15.	STAGING 1 PLANS
16.	STAGING 2 PLANS
17. - 30.	BRIDGE PLANS
31. - 44.	EXISTING BRIDGE PLANS (FOR INFORMATION ONLY)
45.	DETAIL
46. - 49.	CROSS SECTIONS

HIGHWAY STANDARDS

SEE SHEET 5



FULL SIZE PLANS HAVE BEEN PREPARED USING STANDARD ENGINEERING SCALES, REDUCED SIZED PLANS WILL NOT CONFORM TO STANDARD SCALES, IN MAKING MEASUREMENTS ON REDUCED PLANS, THE ABOVE SCALES MAY BE USED.

MICROFILMED _____
 REEL NUMBER _____
 AWARDED _____
 RESIDENT ENGINEER _____
 AS BUILT CHANGES WERE MADE
 ON THE FOLLOWING SHEETS _____

JULIE 1-800-892-0123

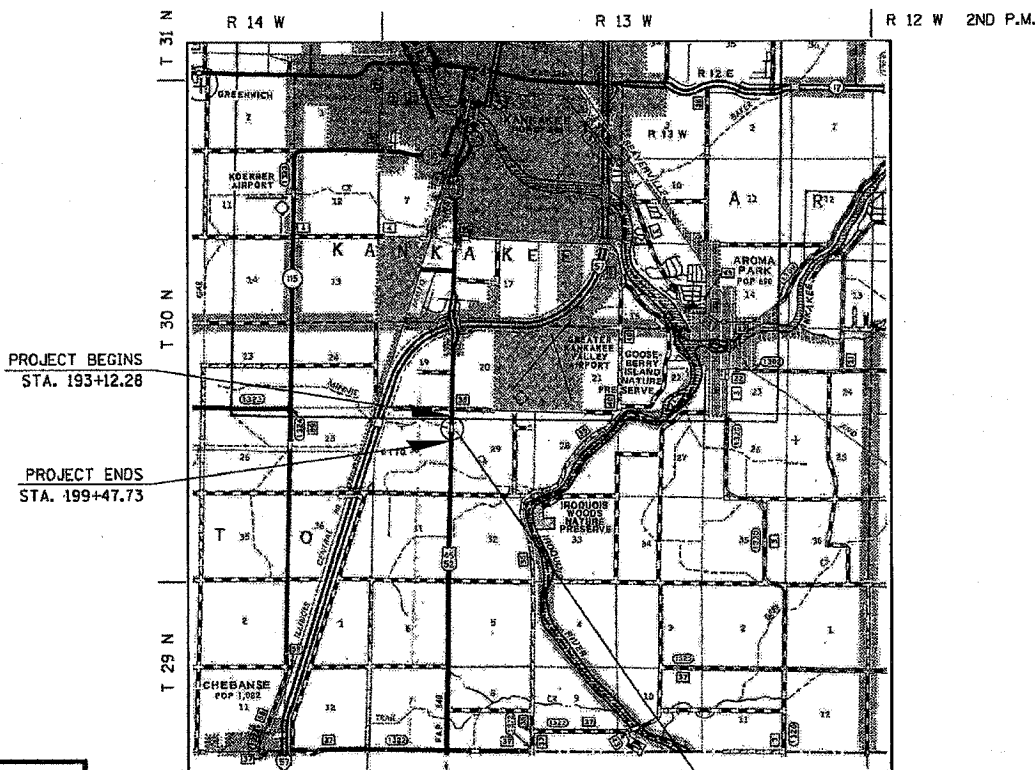
DISTRICT 3 NO. (815) 434-8131

PROJECT ENGINEER: DAN DRAPER
 UNIT CHIEF: PAT BRABOY
 TOWNSHIP: OTTO

CONTRACT NO. 66543



STATE OF ILLINOIS
DEPARTMENT OF TRANSPORTATION
DIVISION OF HIGHWAYS
PLANS FOR PROPOSED
FEDERAL AID HIGHWAY
FAP ROUTE 840 (US 45 / 52)
SECTION 139 BR-1
PROJECT
KANKAKEE COUNTY
C - 93 - 020 - 05
BRIDGE SUPERSTRUCTURE REPLACEMENT



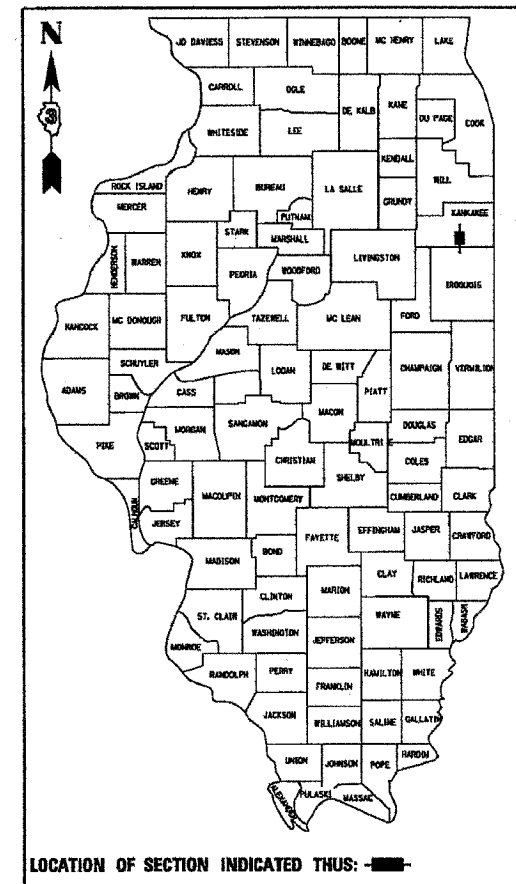
LOCATION MAP
NOT TO SCALE

GROSS LENGTH = 1590.36 FT. = 0.300 MI.
 NET LENGTH = 1590.36 FT. = 0.300 MI.

CONSISTS OF REMOVING THE EXISTING STRUCTURE'S SUPERSTRUCTURE AND BACKWALL (SN 046-0070) AT STA. 196+30 AND REPLACE WITH PRECAST PRESTRESSED CONCRETE DECK BEAM (17" DEPTH) AND PORTLAND CEMENT CONCRETE WEARING SURFACE 5" AND RELATED ROADWAY WORK.

F.A.P. RTE.	SECTION	COUNTY	TOTAL SHEET NO.
840	139 BR-1	KANKAKEE	69 4
ILLINOIS PROJECT			

P-93-032-02
D-93-052-05



FUNCTION CLASSIFICATION - RURAL MINOR ARTERIAL
 POSTED SPEED = 55 MPH
 2008 ADT = 6400
 P.V. = 90.4% S.U. = 5.2% M.U. = 4.4%

STATE OF ILLINOIS
 DEPARTMENT OF TRANSPORTATION
 DIVISION OF HIGHWAYS

SUBMITTED _____ 20____
 _____ 20____ DISTRICT ENGINEER
 _____ 20____ ENGINEER OF DESIGN AND ENVIRONMENT
 _____ 20____ DIRECTOR, DIVISION OF HIGHWAYS



PRINTED BY THE AUTHORITY
 OF THE STATE OF ILLINOIS

DATE-TIME
DGN-SPEC