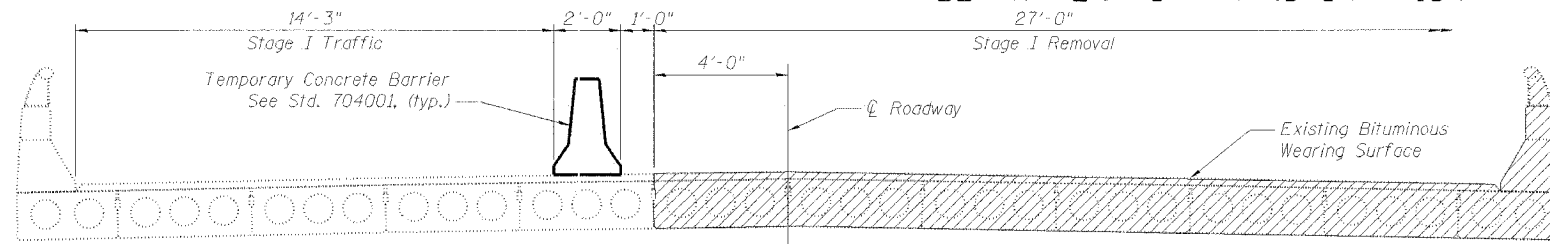


STATE OF ILLINOIS  
DEPARTMENT OF TRANSPORTATION

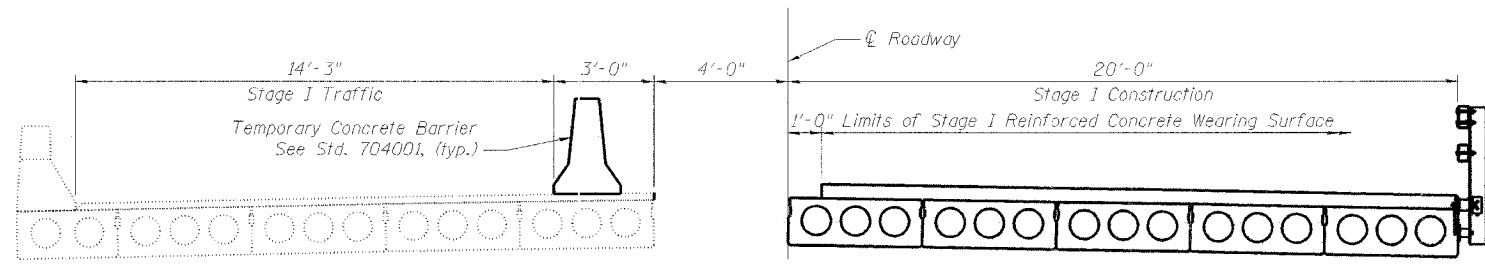
|                       |          |          |                  |       |
|-----------------------|----------|----------|------------------|-------|
| ROUTE NO.             | SECTION  | COUNTY   | SHEET NO.        | SHEET |
| F.A.P. 840            | 139 BR-1 | KANKAKEE | 69               | 19    |
| FED. ROAD DIST. NO. 7 |          | ILLINOIS | FED. AID PROJECT |       |

Contract #66543

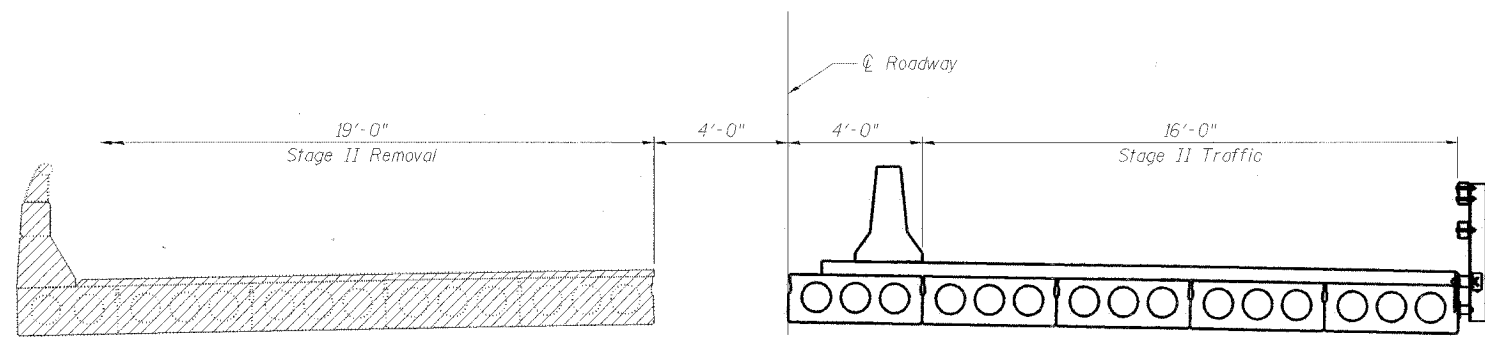
SHEET NO. 3  
13 SHEETS



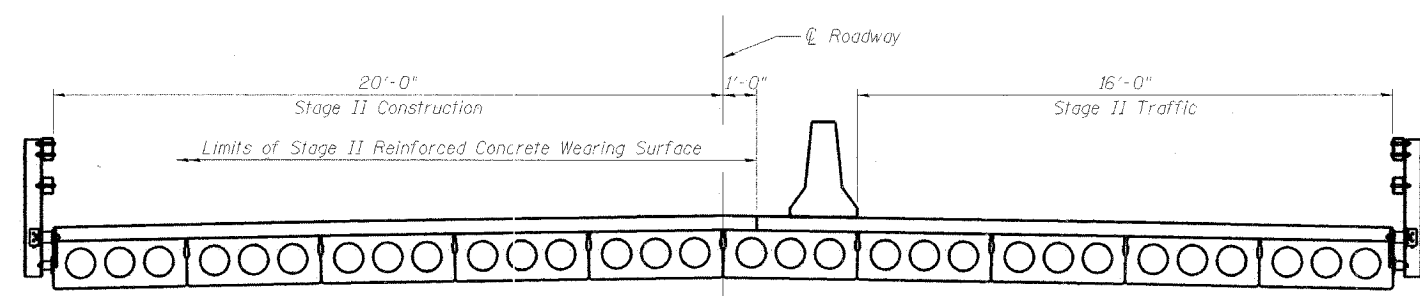
**STAGE I REMOVAL**



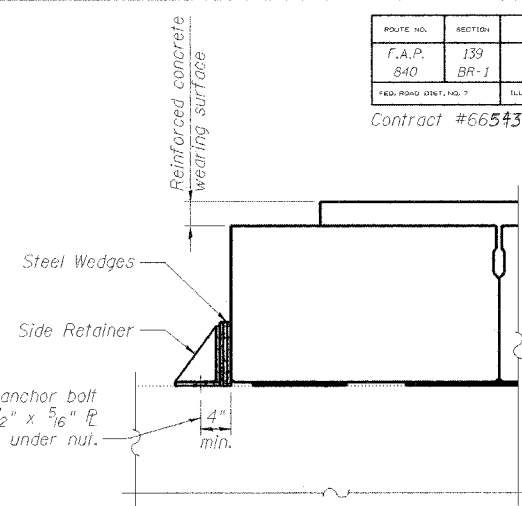
**STAGE I CONSTRUCTION**



**STAGE II REMOVAL**



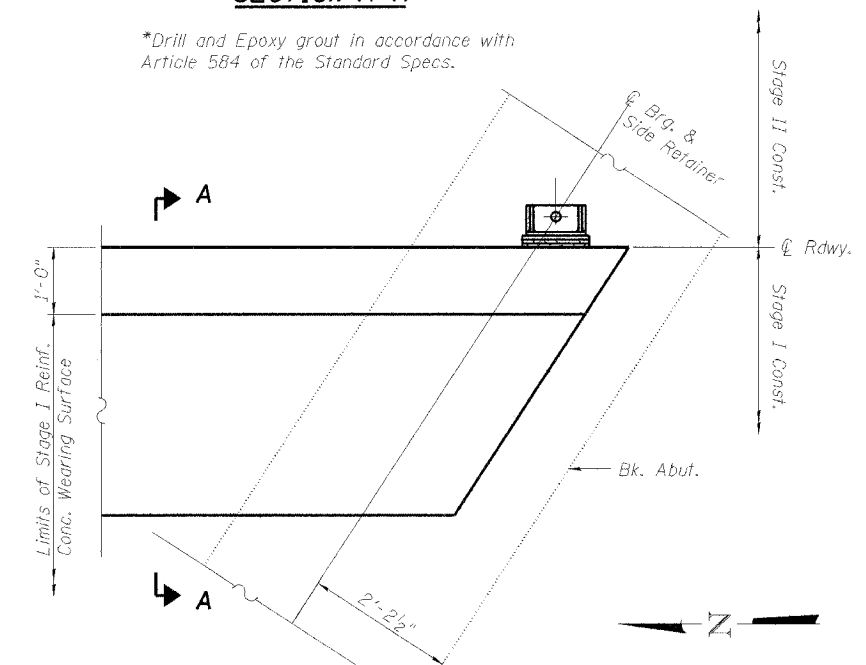
**STAGE II CONSTRUCTION**



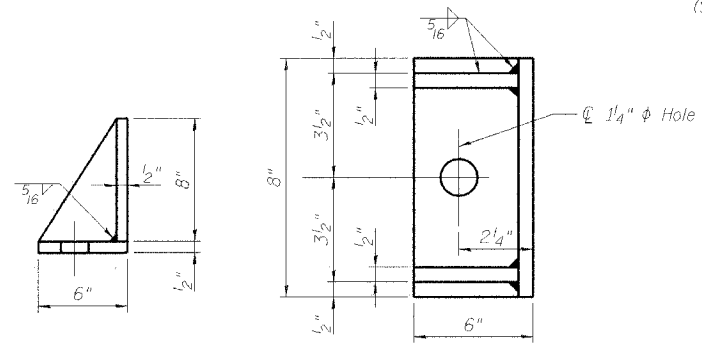
**SECTION A-A**

Notes:  
After Reinf. concrete surface is poured and cured the retainer angles shall be removed. Anchor Bolts shall be cut-off flush and covered with a layer of epoxy grout.  
Cost of side retainer and accessories is included with "Furnishing and Erecting Structural Steel".

\*Drill and Epoxy grout in accordance with Article 584 of the Standard Specs.



**PLAN**  
(Showing South Abutment)  
(North Abutment similar)



**SIDE RETAINER**

Equivalent rolled angle with stiffeners will be allowed in lieu of welded plates.

**STAGE CONSTRUCTION DETAILS**  
**US ROUTE 45/52 OVER MINNIE CREEK**  
**F.A.P. 840 SEC. 139 BR-1**  
**KANKAKEE COUNTY**  
**STATION 196+30.00**  
**STRUCTURE NO. 046-0070**

|          |               |
|----------|---------------|
| DESIGNED | S.D.S.        |
| CHECKED  | C.W.C.        |
| DRAWN    | L.M.G./D.L.H. |
| CHECKED  | S.D.S.        |

**WHKS & CO.**  
ENGINEERS PLANNERS LAND SURVEYORS  
MASON CITY, IA EAST DUBUQUE, IA AMES, IA SPRINGFIELD, IL ROCHESTER, MN

Note:  
Hatched areas indicate Removal of Existing Superstructures.  
All cross-sections are looking South.  
All dimensions are at right angles to  $\perp$  Roadway.  
For quantity of Temporary Concrete Barrier, see Roadway Plans.  
Removal of existing bridge rail is included with Removal of Existing Superstructures.