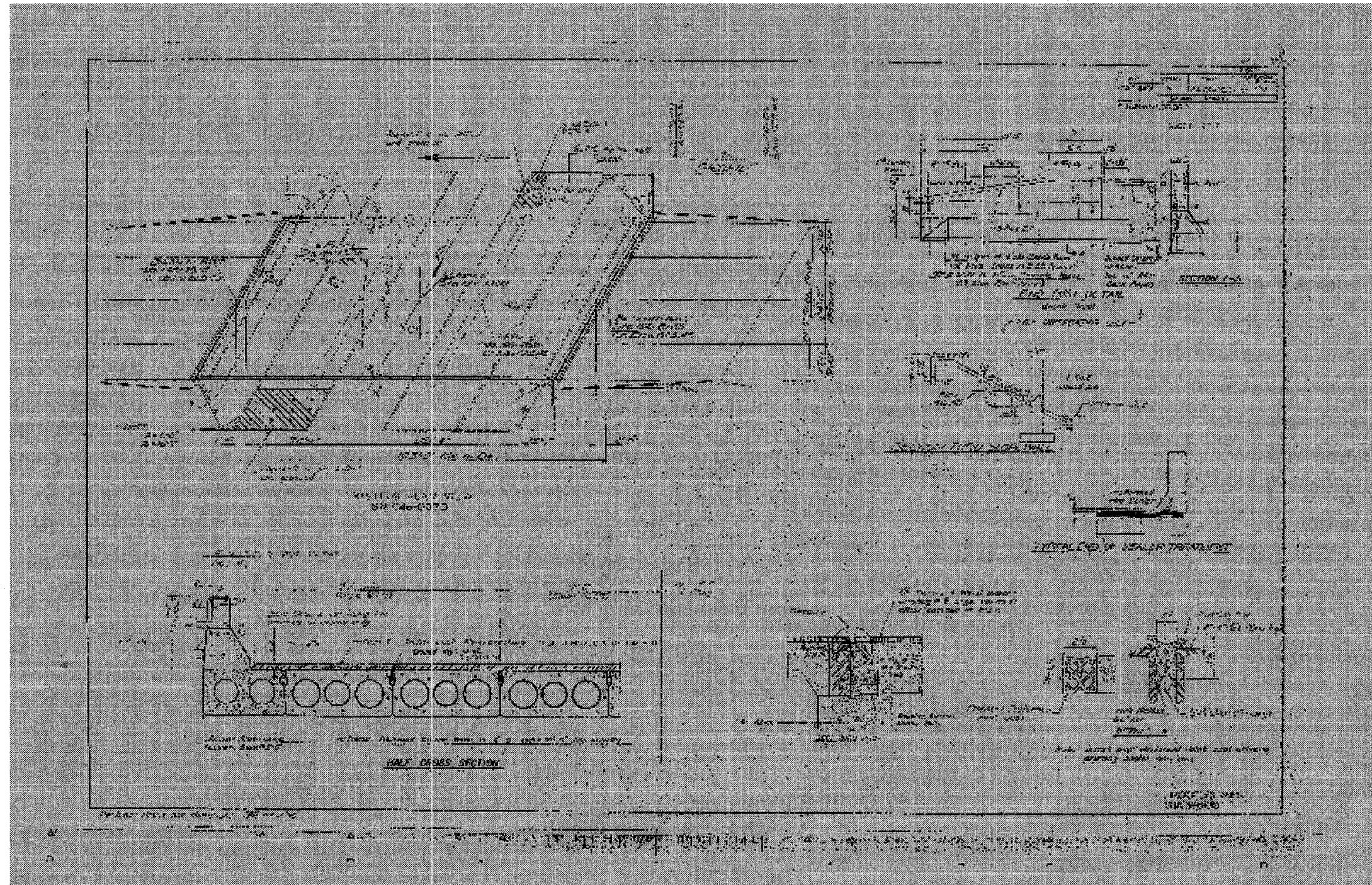


STATE OF ILLINOIS
DEPARTMENT OF TRANSPORTATION

ROUTE NO.	SECTION	COUNTY	SHEET	TOTAL
F.A.P. 840	139 BR-1	KANKAKEE	69	30
FED. ROAD DIST. NO. 7		ILLINOIS	FED. ROAD PROJECT	

Contract #66543



DESIGNED	S.D.S.
CHECKED	-
DRAWN	L.M.G.
CHECKED	-

EXAMINED	200
PASSED	

ENGINEER OF BRIDGE DESIGN
ENGINEER OF BRIDGES AND STRUCTURES



FOR INFORMATION ONLY

1990 EXISTING PLANS
US ROUTE 45/52 OVER MINNIE CREEK
F.A.P. 840 SEC. 139 BR-1
KANKAKEE COUNTY
STATION 297+20.45
STRUCTURE NO. 046-0070