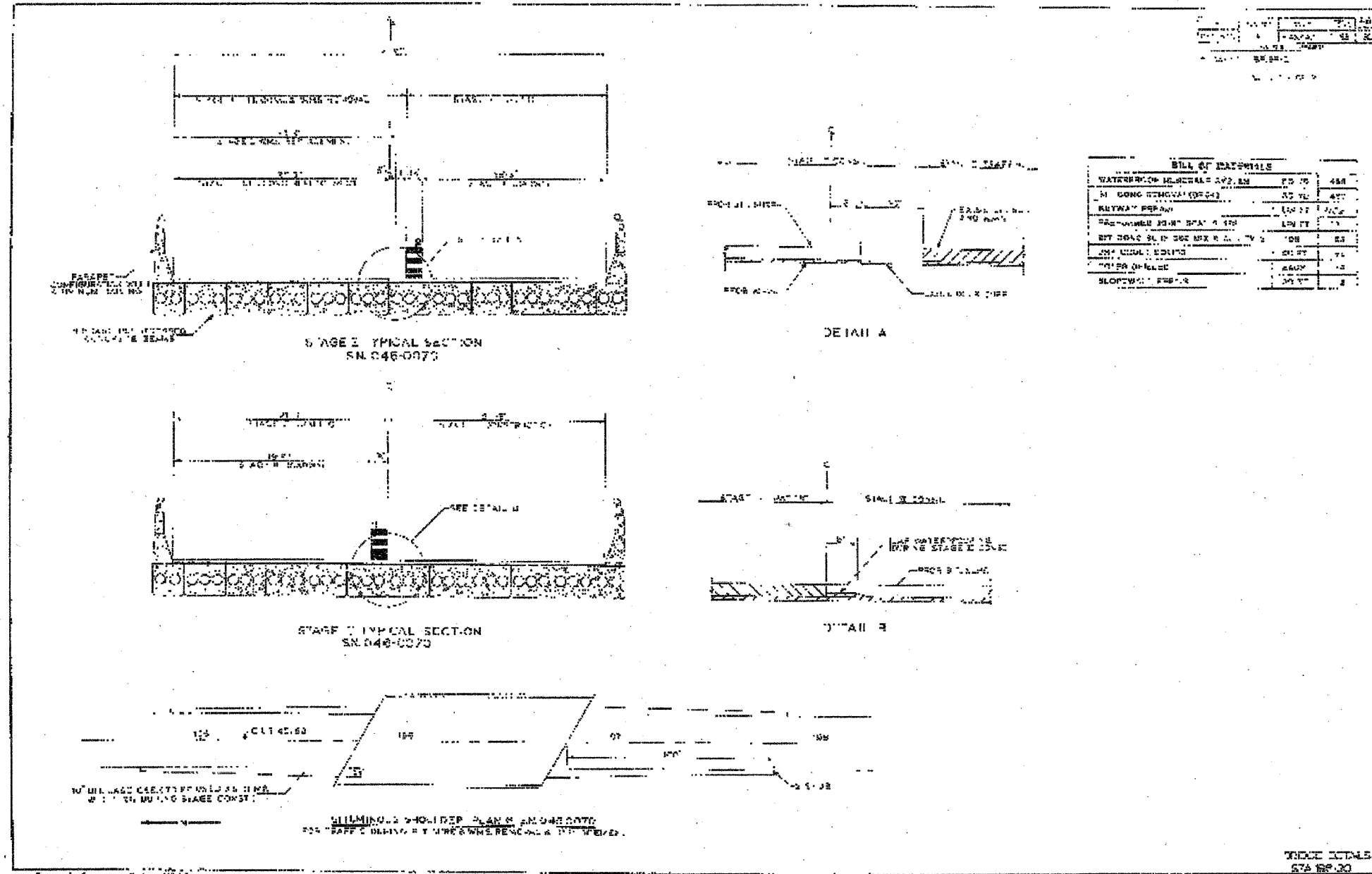


STATE OF ILLINOIS  
DEPARTMENT OF TRANSPORTATION

ROUTE NO.	SHEET	COUNTY	JOB NO.	SHEET NO.
F.A.P. 840	139 BR-1	KANKAKEE	69	31
FED. ROAD DIST. NO. 7		ILLINOIS FED. AID PROJECT		

Contract #66543



DESIGNED	S.D.S.
CHECKED	-
DRAWN	L.M.G.
CHECKED	-

EXAMINED	200
PASSED	ENGINEER OF BRIDGE DESIGN
	ENGINEER OF BRIDGES AND STRUCTURES

**WHKS & CO.**

ENGINEERS PLANNERS LAND SURVEYORS

MASON CITY, IA DEBUILE, IA AMES, IA SPRINGFIELD, IL ROCKFORD, IL

**FOR INFORMATION ONLY**

1990 EXISTING PLANS  
US ROUTE 45/52 OVER MINNIE CREEK  
F.A.P. 840 SEC. 139 BR-1  
KANKAKEE COUNTY  
STATION 297+20.45  
STRUCTURE NO. 046-0070