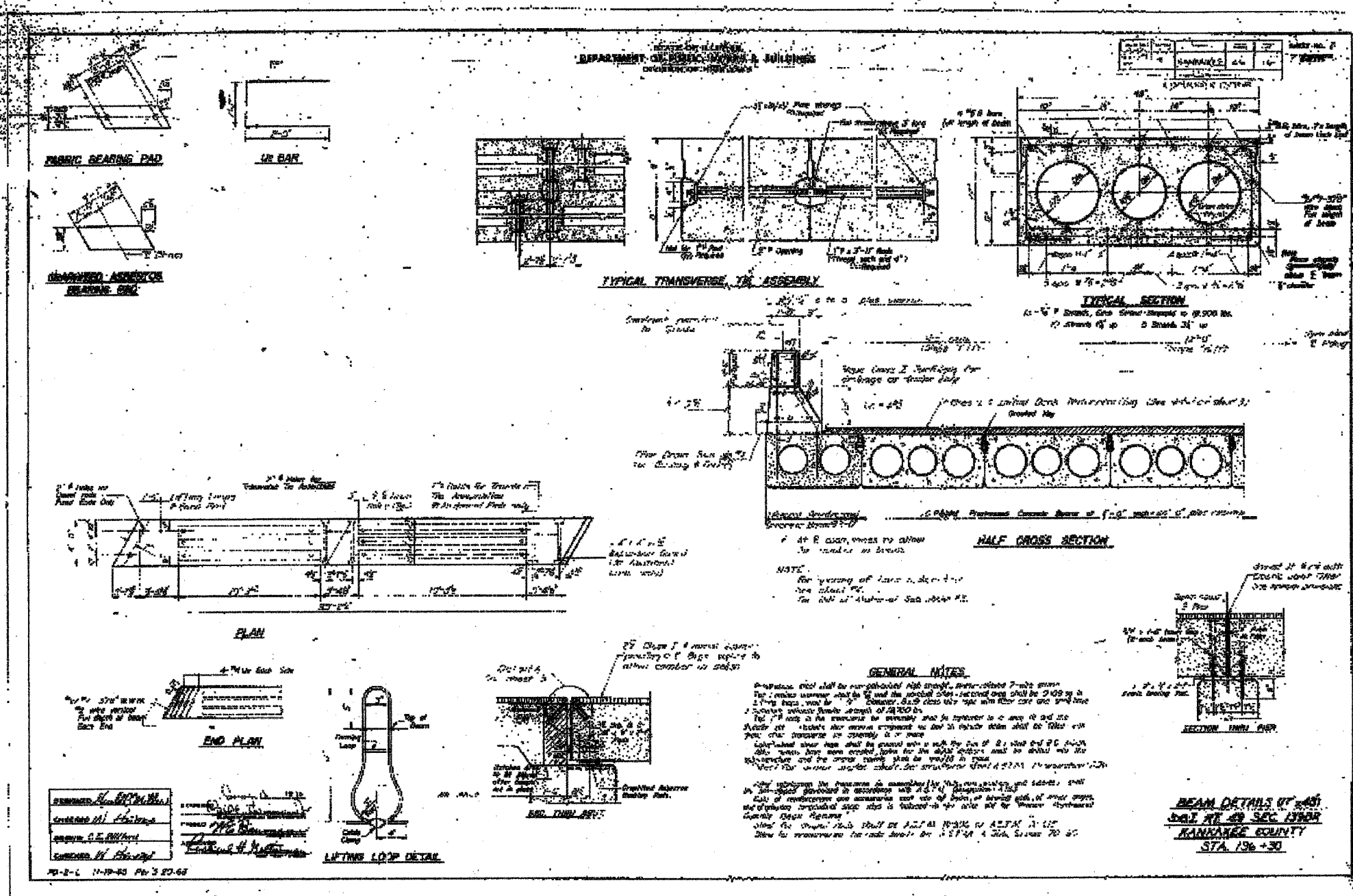


STATE OF ILLINOIS  
DEPARTMENT OF TRANSPORTATION

ROUTE NO.	SECTION	COUNTY	SHEETS	TOTAL SHEETS
F.A.P. 840	139 BR-1	KANKAKEE	69	36
FED. ROAD DIST. NO. 7	ILLINOIS	FED. AID PROJECT		

Contract #66543



DESIGNED	S.D.S.
CHECKED	-
DRAWN	L.M.G.
CHECKED	-

EXAMINED	200
PASSED	-

**WHKS & CO.**

ENGINEERS PLANNERS LAND SURVEYORS

MASON CITY, I.A. BIRMGHAM, A. AND S. SPRINGFIELD, ROCKFORD, ILL.

**FOR INFORMATION ONLY**

1970 EXISTING PLANS  
US ROUTE 45/52 OVER MINNIE CREEK  
F.A.P. 840 SEC. 139 BR-1  
KANKAKEE COUNTY  
STATION 297+20.45  
STRUCTURE NO. 046-0070