

STATE OF ILLINOIS
DEPARTMENT OF TRANSPORTATION

ROUTE NO.	SECTION	COUNTY	JOB SHEETS	SHEET NO.	SHEET NO. 3 14 SHEETS
FAP 840	#	IROQUOIS	39	15	
FED. ROAD DIST. NO.	ALIGNMENT	FED. AID PROJECT	123-BR-1		
			66647		



PLAN

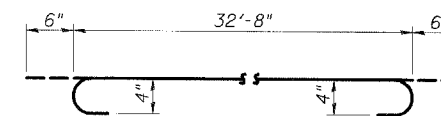
* Order a(E) bars full length. Cut to fit skew and use remainder of bars in opposite end

MIN. BAR LAP
#4 bar = 1'-8"

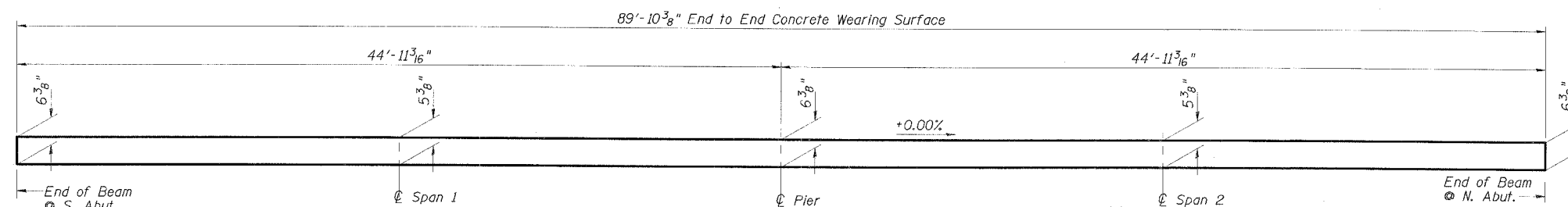
Note:
Reinforcement bars designated (E) shall be epoxy coated.
Bars indicated thus 33x3-#4 etc. indicates 33 lines of bars with 3 lengths per line. For remainder of superstructure details, see drawings 4 and 5 of 14.

**CONCRETE WEARING SURFACE
BILL OF MATERIAL**

Bar	No.	Size	Length	Shape
a(E)	89	#4	33'-8"	
b(E)	99	#4	31'-0"	
Reinforcement Bars, Epoxy Coated			Pound	4060
Concrete Wearing Surface, 5"			Sq. Yd.	330
Bridge Deck Grooving			Sq. Yd.	310
Protective Coat			Sq. Yd.	330



BAR a(E)



REINFORCED CONCRETE WEARING SURFACE PROFILE
(At centerline of roadway)

Note:
Greater thickness is required at centerline of superstructure to conform to cross section slopes shown on Dwg. 4 of 14.

SUPERSTRUCTURE
IL 49 OVER PIGEON CREEK
FAP ROUTE 840 - SECTION 123-BR-1
IROQUOIS COUNTY
STATION 135+74.00
STRUCTURE NO. 038-0174

ESCA
CONSULTANTS, INC.

DESIGNED BY:	FMA	04/06
DRAWN BY:	HAG/cj	04/06
CHECKED BY:	ELH/MTD	09/06
APPROVED BY:	RDP	09/06