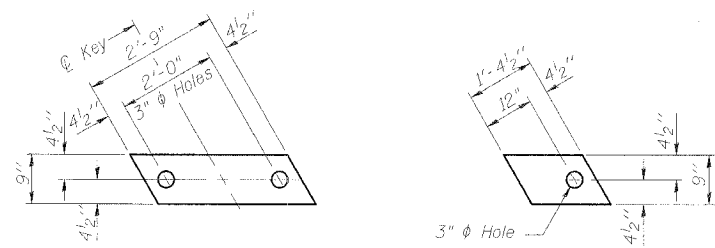


STATE OF ILLINOIS
DEPARTMENT OF TRANSPORTATION

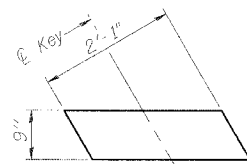
ROUTE NO.	SECTION	COUNTY	SHEETS	DATE	SHEET NO. 4
FAP 840	#	IROQUOIS	39	16	14 SHEETS
FED. ROAD DIST. NO.	ALIGNMENT	FED. AID PROJECT			
		66647			123-BR-1



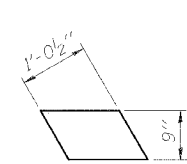
FABRIC BEARING PAD
(Interior)

FABRIC BEARING PAD
(Exterior)

FIXED
(At Pier)

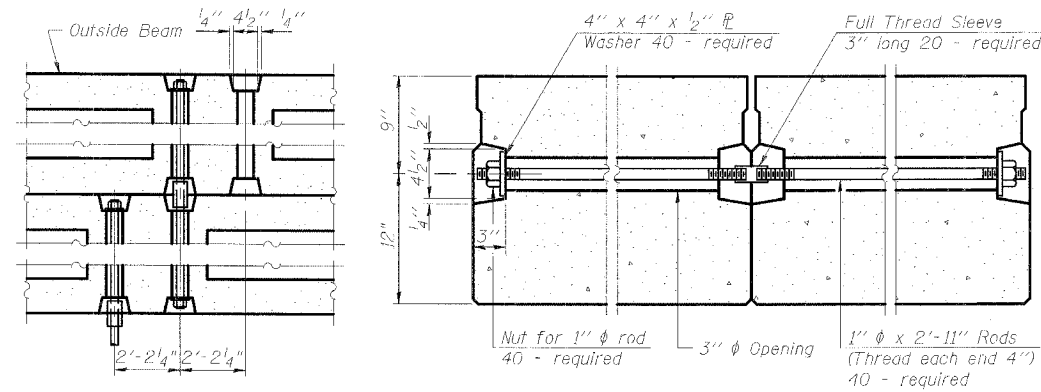


FABRIC BEARING PAD
(Interior)

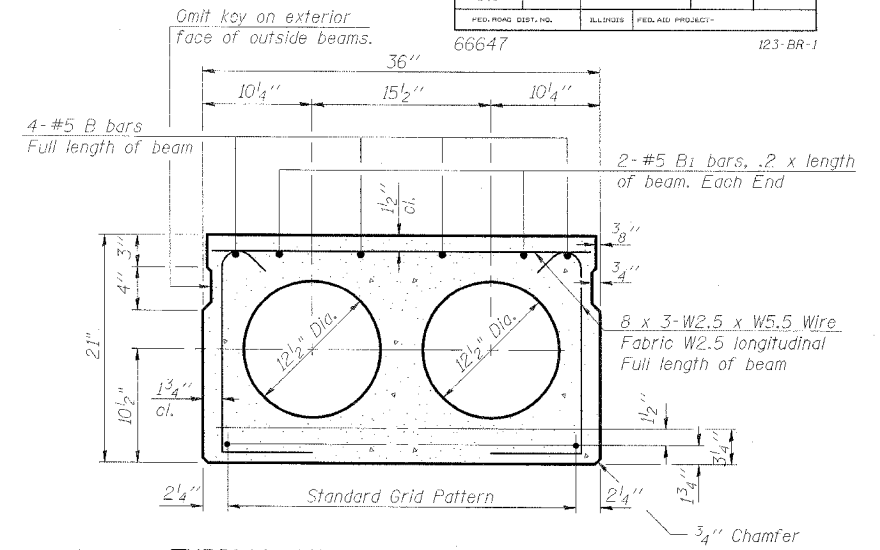


FABRIC BEARING PAD
(Exterior)

EXPANSION
(At Abutments)



TYPICAL TRANSVERSE TIE ASSEMBLY



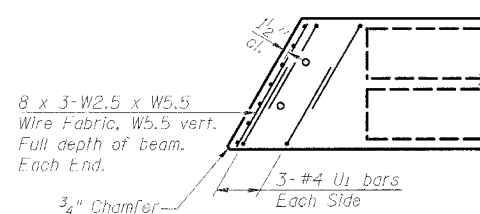
TYPICAL SECTION-INTERIOR BEAMS

12-1/2" ϕ Strands, Each Strand Stressed to 30,900 Lbs.
4-Strands 1 3/4" up, 8-Strands 3 1/4" up

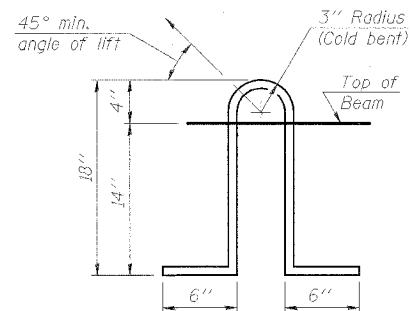
Note:
Place strands symmetrically
about ϕ of beam.

NOTES

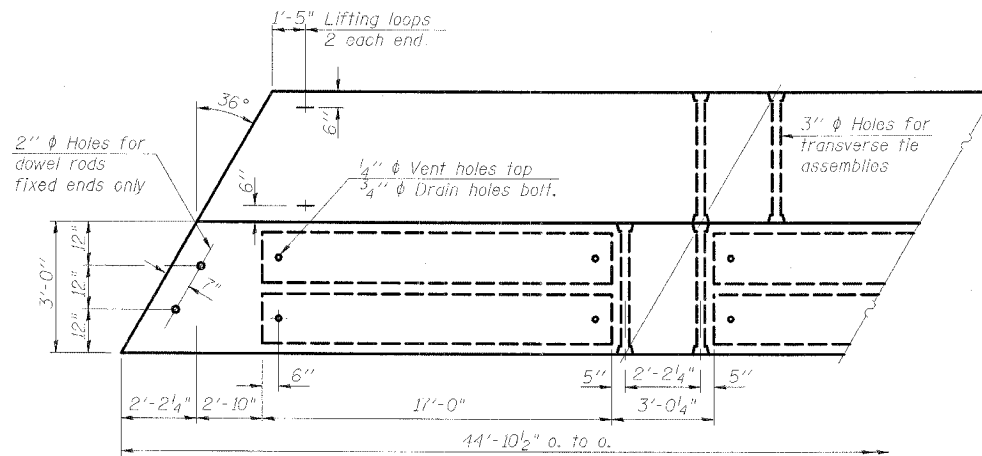
- Prestressing steel shall be uncoated high strength, low relaxation 7-wire strand, Grade 270. The nominal diameter shall be 1/2" and the nominal cross-sectional area shall be 0.153 sq. in. Lifting loops shall be 2-1/2" ϕ 270 ksi strands, as shown.
- The 1" ϕ rods in the transverse tie assembly shall be tightened to a snug fit and the threads set. Pockets that receive transverse tie bar on outside shall be filled with grout after transverse tie assembly is in place.
- Non prestressing steel shall conform to AASHTO M-31 or M-322 Grade 60.
- The bearing seat surfaces shall be adjusted by shimming to assure firm and even bearing. Two 1/8" fabric adjusting shims of the dimensions of the Exterior Bearing Pad shall be provided for each bearing.
- Keyway surfaces shall be cleaned to remove form oil or other bond breaking material prior to shipment of the beams. Cleaning shall be done by sandblasting the keyway areas between top of the beam and the bottom edge of the key.
- Corrosion inhibitor, as covered in the Special Provisions, shall be used in the concrete for precast prestressed concrete deck beams.
- Required Release Strength, f'ci, shall be 4,000 p.s.i.
- See drawing 2 of 14 for location of rail anchors and additional notes.



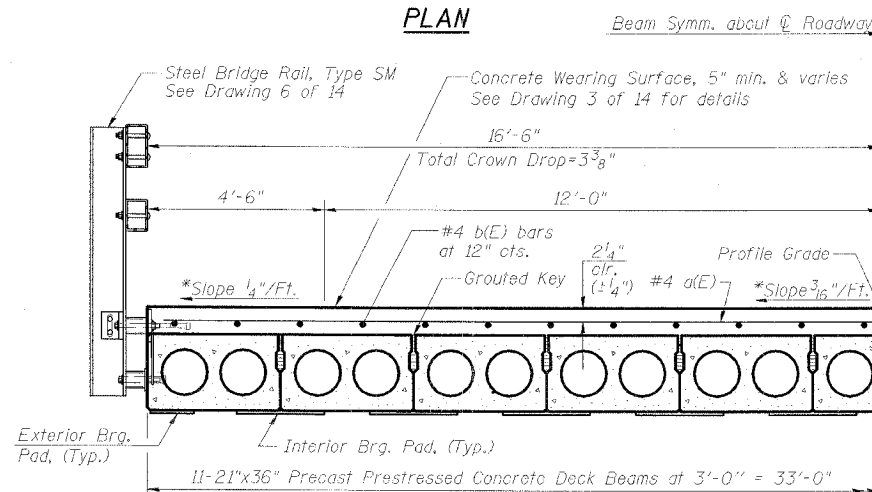
END PLAN AT FIXED END
(EXPANSION END SIMILAR)



LIFTING LOOP DETAIL



PLAN



HALF CROSS SECTION

*Cross slopes shown are applicable
to Concrete Wearing Surface.

ESCA
CONSULTANTS, INC.

DESIGNED BY:	FMA	04/06
DRAWN BY:	cj	04/06
CHECKED BY:	ELH/MTD	09/06
APPROVED BY:	RDP	09/06

SUPERSTRUCTURE DETAILS
IL 49 OVER PIGEON CREEK
FAP ROUTE 840 - SECTION 123-BR-1
IROQUOIS COUNTY
STATION 135+74.00
STRUCTURE NO. 038-0174