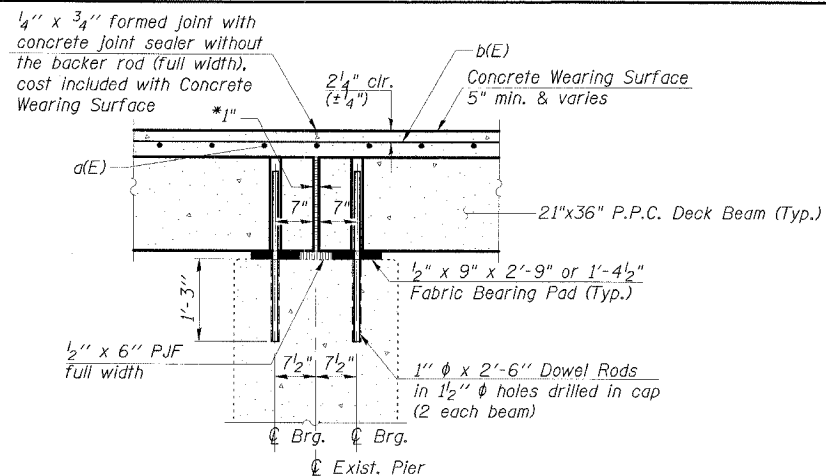


STATE OF ILLINOIS
DEPARTMENT OF TRANSPORTATION

| | | | | |
|---------------------|------------|-----------|-----------|-----------|
| ROUTE NO. | SECTION | COUNTY | SHEET NO. | SHEET NO. |
| FAP 840 | * | IROQUOIS | 39 | 17 |
| FED. ROAD DIST. NO. | ILL. INDEX | PROJ. NO. | | |
| 66647 | | 123-BR-1 | | |

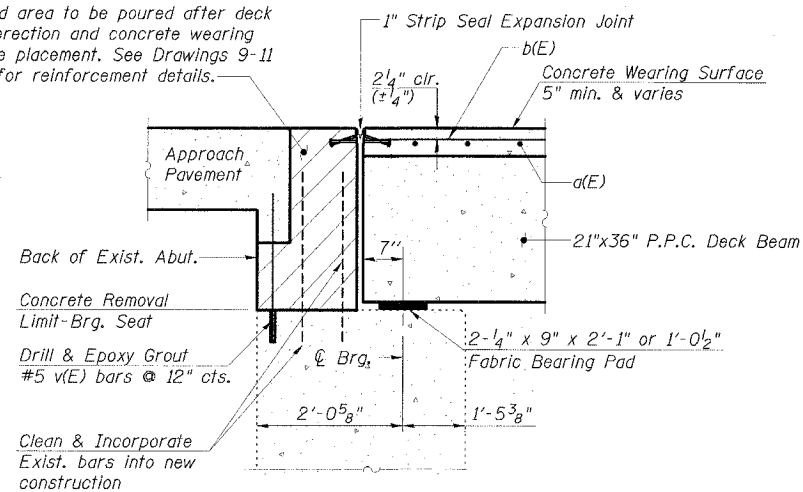


SECTION THRU PIER

(Horizontal dimensions are at right angles to beam ends)

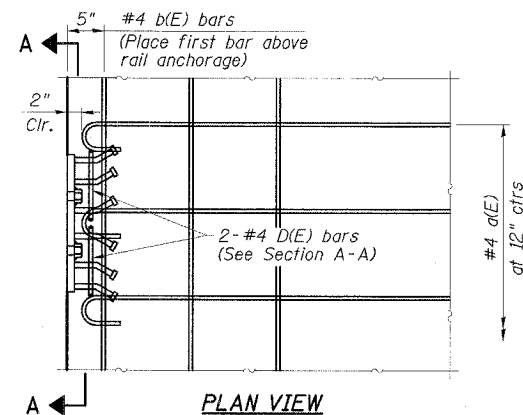
*1" Jt. shall be filled with non-shrink grout. 1" dimension may vary to accommodate tolerance in beam lengths.

Hatched area to be poured after deck beam erection and concrete wearing surface placement. See Drawings 9-11 of 14 for reinforcement details.

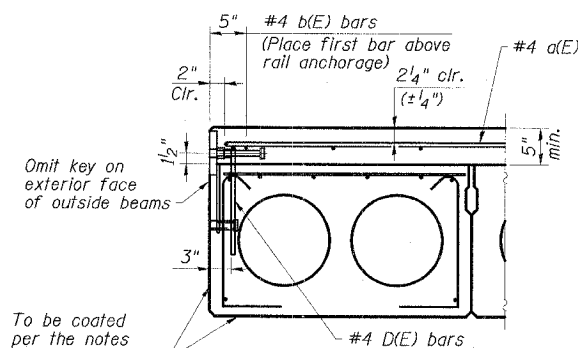


SECTION THRU ABUTMENT

(Dimensions at right angles)

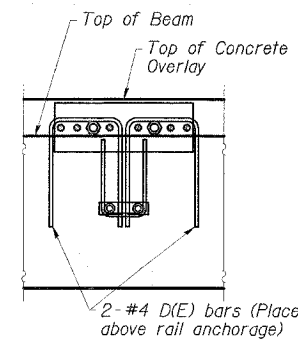


PLAN VIEW



FASCIA BEAM CROSS SECTION

See Section Thru Interior Beams on Dwg. 4 of 14 for strand pattern, dimensions and bar call outs.



SECTION A-A

CONCRETE OVERLAY MODIFICATIONS FOR RAIL ANCHORAGE

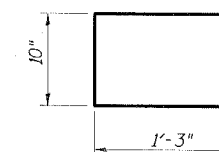
NOTES

After beams have been erected, holes shall be drilled into substructure and dowels rods placed. Dowel holes shall be filled with non-shrink grout to top of beam and allowed to cure min. 24 hrs. prior to grouting the shear keys.

Concrete wearing surface to be poured after grouting the shear keys.

Dowel rods drilled in cap are included in the cost of Precast Prestressed Concrete Deck Beams (21" depth).

The rail anchorage shall be cast with the beam and the wearing surface shall be cast in the field. Formwork necessary for the wearing surface may be secured utilizing the bottom rail anchorage inserts and/or additional inserts cast into the beam. Drilling into the beam will not be permitted.



BAR D(E)

ESCA
CONSULTANTS, INC.

| | | |
|--------------|---------|-------|
| DESIGNED BY: | FMA | 04/06 |
| DRAWN BY: | HAG/cj | 04/06 |
| CHECKED BY: | ELH/MTD | 09/06 |
| APPROVED BY: | RDP | 09/06 |

SUPERSTRUCTURE DETAILS
IL 49 OVER PIGEON CREEK
FAP ROUTE 840 - SECTION 123-BR-1
IROQUOIS COUNTY
STATION 135+74.00
STRUCTURE NO. 038-0174