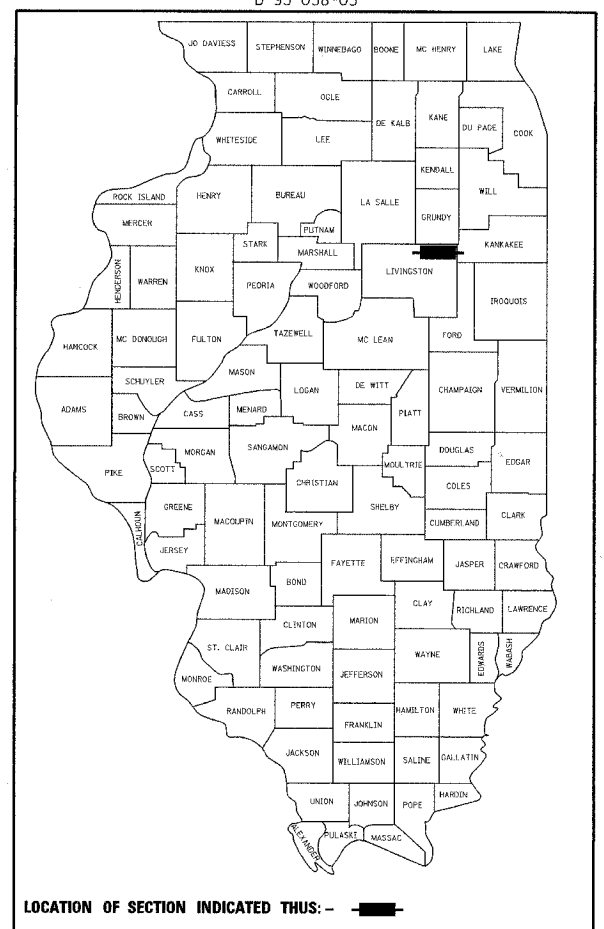


F.A.P. RTE.	SECTION	COUNTY	TOTAL SHEETS	SHEET NO.
41	15-BR	LIVINGSTON	38	1

CONTRACT NO. 66665

P-93-034-04
D-93-038-05



FUNCTIONAL CLASSIFICATION - RURAL MINOR ARTERIAL
DESIGN SPEED = 55 MPH
POSTED SPEED = 55 MPH
2005 ADT = 3,000
2007 ADT = 3,150
P.V. = 75.0% S.U. = 5.0% M.U. = 20.0%

STATE OF ILLINOIS
DEPARTMENT OF TRANSPORTATION
DIVISION OF HIGHWAYS

SUBMITTED October 27, 2006
Debra A. Harkness
 DEPUTY DIRECTOR OF HIGHWAYS, REGION ENGINEER

December 8, 2006
Eric E. Hamrick
 INTERIM ENGINEER OF DESIGN AND ENVIRONMENT

December 8, 2006
Milton R. Sear, P.E./D
 DIRECTOR OF HIGHWAYS, CHIEF ENGINEER

PRINTED BY THE AUTHORITY OF THE STATE OF ILLINOIS

STATE OF ILLINOIS
DEPARTMENT OF TRANSPORTATION
DIVISION OF HIGHWAYS
PLANS FOR PROPOSED
HIGHWAY IMPROVEMENT
FAP ROUTE 41 (ILLINOIS ROUTE 17)
SECTION 15 BR
PROJECT BRF-0041 (127)
LIVINGSTON COUNTY

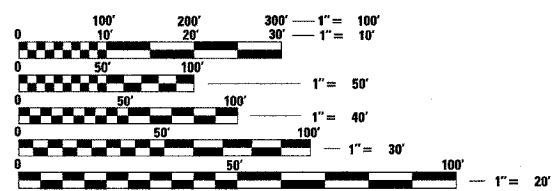
INDEX OF SHEETS

1. COVER SHEET
2. GENERAL NOTES
3. SUMMARY OF QUANTITIES
4. TYPICAL SECTIONS
5. SCHEDULE OF QUANTITIES
6. ALIGNMENT, TIES & BENCHMARKS
7. TRAFFIC CONTROL CONSTRUCTION STAGING NOTES AND DETAILS
8. TRAFFIC CONTROL CONSTRUCTION STAGING
- 9-10. PLAN AND PROFILE
11. EROSION CONTROL, LANDSCAPING & PAVEMENT MARKING PLAN
- 12-26. BRIDGE PLANS
- 27-28. DISTRICT DETAILS
- 29-38. CROSS SECTIONS

HIGHWAY STANDARDS

- | | |
|-----------|---|
| 000001-04 | STANDARD SYMBOLS, ABBREVIATIONS AND PATTERNS |
| 280001-03 | TEMPORARY EROSION CONTROL SYSTEMS |
| 420401-05 | BRIDGE APPROACH PAVEMENT |
| 482001-01 | HMA SHOULDER ADJACENT TO FLEXIBLE PAVEMENT |
| 482011-02 | HMA SHLD. STRIPS/SHLDS. WITH RESURFACING OR WIDENING AND RESURFACING PROJECTS |
| 515001-02 | NAME PLATE FOR BRIDGES |
| 601101 | CONCRETE HEADWALL FOR PIPE DRAIN |
| 630001-07 | STEEL PLATE BEAM GUARDRAIL |
| 630201-04 | PCC/HMA STABILIZATION AT STEEL PLATE BEAM GUARDRAIL |
| 630301-04 | SHOULDER WIDENING FOR TYPE 1 (SPECIAL) GUARDRAIL TERMINALS |
| 631031-06 | TRAFFIC BARRIER TERMINAL, TYPE 6 |
| 635006-02 | REFLECTOR AND TERMINAL MARKER PLACEMENT |
| 635011-01 | REFLECTOR MARKER AND MOUNTING DETAILS |
| 701201-02 | LANE CLOSURE, 2L, 2W, DAY ONLY, FOR SPEEDS > 45 MPH |
| 701301-02 | LANE CLOSURE, 2L, 2W, SHORT TIME OPERATIONS |
| 701321-08 | LANE CLOSURE, 2L, 2W, BRIDGE REPAIR WITH BARRIER |
| 701326-02 | LANE CLOSURE, 2L, 2W, PAVEMENT WIDENING, FOR SPEEDS > 45 MPH |
| 702001-06 | TRAFFIC CONTROL DEVICES |
| 720001 | SIGN PANEL MOUNTING DETAILS |
| 720006-01 | SIGN PANEL ERECTION DETAILS |
| 780001-01 | TYPICAL PAVEMENT MARKINGS |
| 781001-02 | TYPICAL APPLICATIONS RAISED REFLECTIVE PAVEMENT MARKERS |

MICROFILMED _____
 REEL NUMBER _____
 AWARDED _____
 RESIDENT ENGINEER _____
 AS BUILT CHANGES WERE MADE ON THE FOLLOWING SHEETS _____

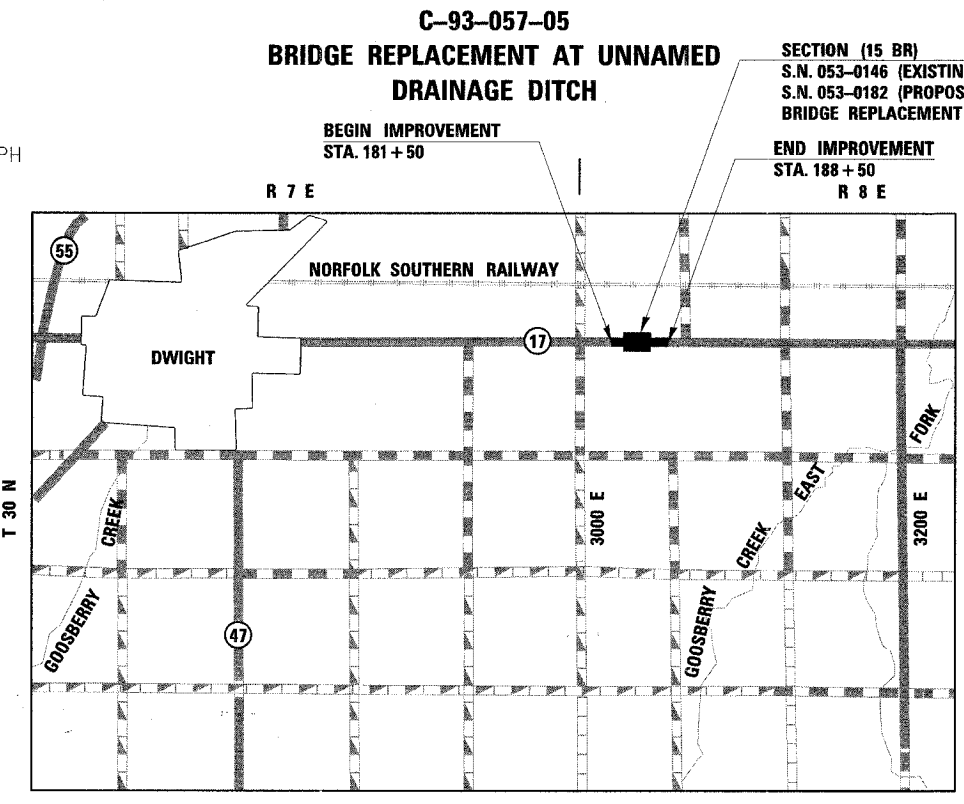


FULL SIZE PLANS HAVE BEEN PREPARED USING STANDARD ENGINEERING SCALES. REDUCED SIZED PLANS WILL NOT CONFORM TO STANDARD SCALES. IN MAKING MEASUREMENTS ON REDUCED PLANS, THE ABOVE SCALES MAY BE USED.

J.U.L.I.E.
JOINT UTILITY LOCATION INFORMATION FOR EXCAVATION
1-800-892-0123

DISTRICT 3 NO. (815) 434-6131
 PROJECT ENGINEER: DAVID BROVIAK
 UNIT CHIEF: BRAD DUNCAN
 TOWNSHIP: ROUND GROVE

CONTRACT NO. 66665



GROSS & NET LENGTH = 700 FT. = 0.133 MI.

rjngroup License # 184-000813
 Excellence through Ownership
 200 West Front Street
 Wheaton, IL 60187

REGISTERED P.E., STATE OF ILLINOIS
 REGISTERED S.E., STATE OF ILLINOIS

0/19/2006 2:25:38 PM K:\1206665\Drawn\Design\20666501_Cover.dgn