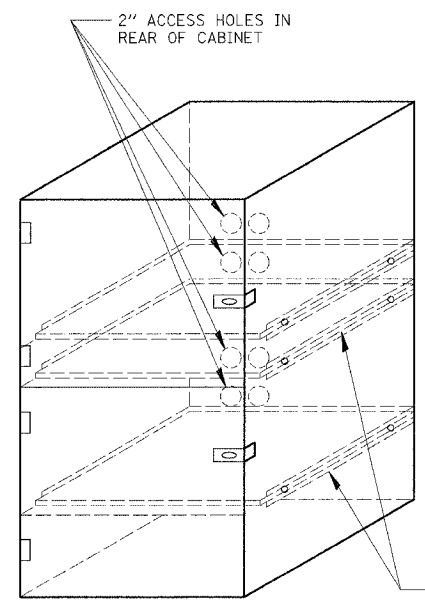
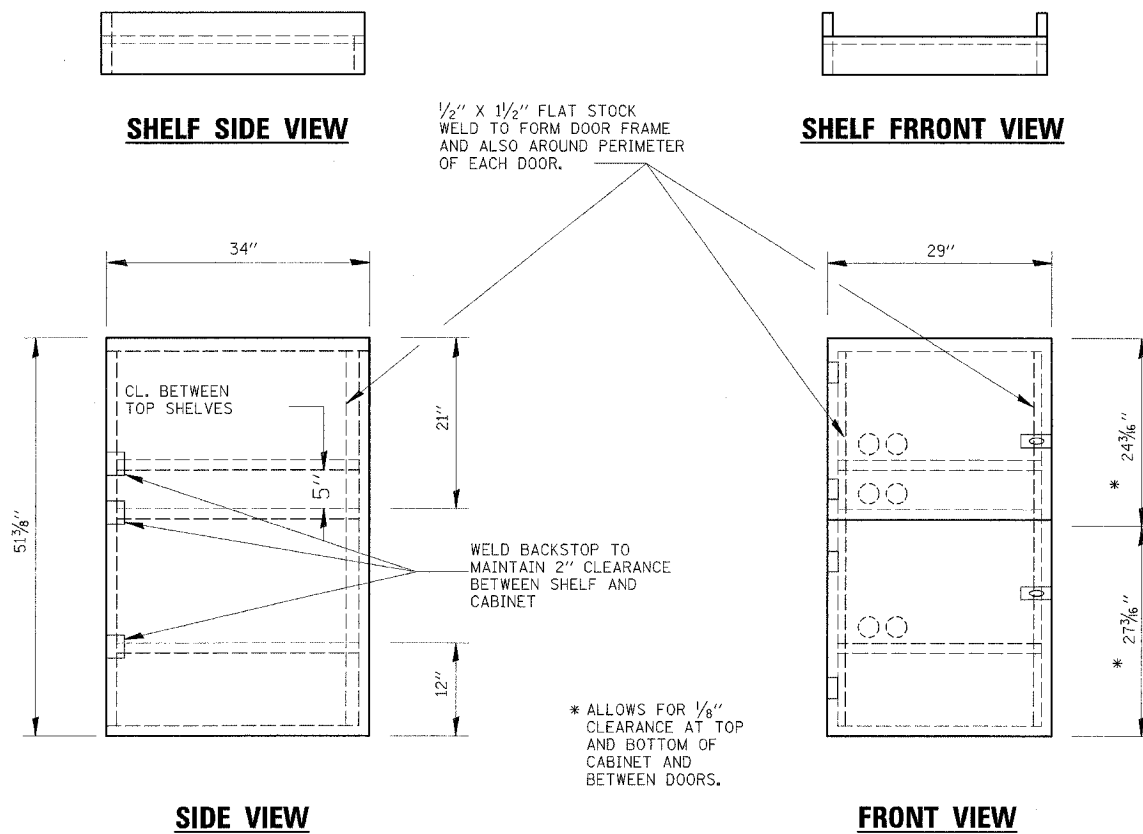


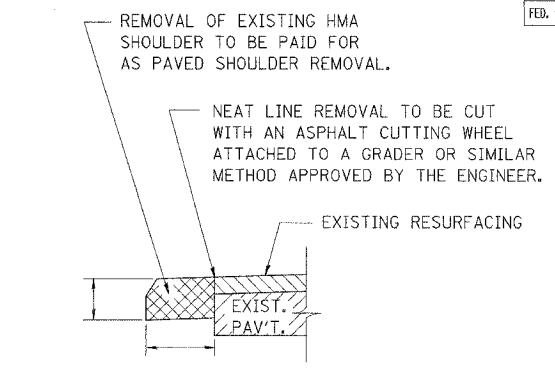
F.A.P. RTE.	SECTION	COUNTY	TOTAL SHEET SHEETS	NO.
41	15 BR	LIVINGSTON	38	28
FED. ROAD DIST. NO. 7 ILLINOIS FED. AID PROJECT				

CONTRACT NO. 66665

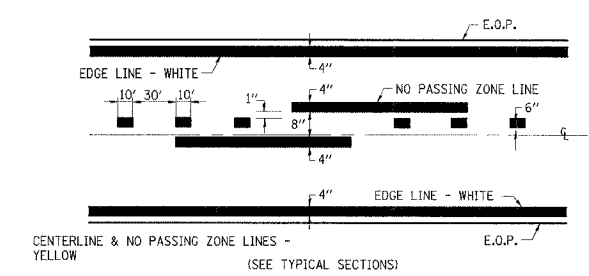


**LOCKABLE COMPUTER CABINET**

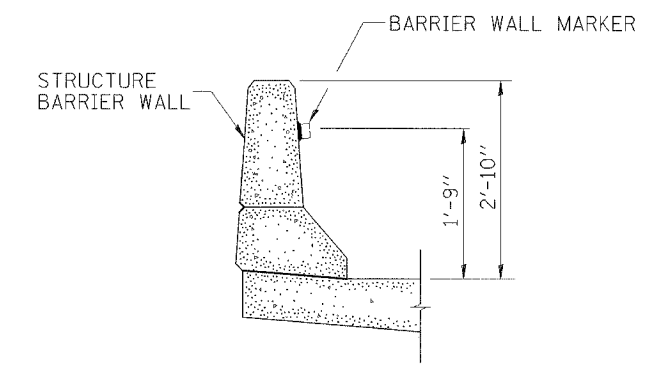
- NOTES:
1. USE 16 GAUGE STEEL FOR CABINET.
  2. THE TOP SHELF SHALL SLIDE IN OR OUT WITH THE TOP DOOR OPEN.
  3. ALL HINGES AND HASPS WILL BE WELDED TO THE CABINET.
  4. ALL EDGES SHALL BE GROUND SMOOTH.
  5. TWO (2" DIA.) ACCESS HOLES WILL BE REQUIRED FOR EACH SHELF.
  6. CABINET SHALL BE PAINTED WITH TWO COATS OF FLAT PAINT.
  7. 2 EACH MATCHING KEY PADLOCKS, WITH 3 KEYS PROVIDED, MASTER MODEL 3 T OR EQUIVALENT.
  8. 4 EACH PLAIN STEEL, NON-REMOVABLE PIN, NO HOLE 4"x4" SQUARE CORNER HINGES TO BE WELDED ON.
  9. 2 EACH EXTRA HEAVY, PLAIN STEEL, FIXED STAPLE, NO HOLE, 7 1/4" HASPS TO BE WELDED ON.



**REMOVAL OF EXISTING HMA SHOULDER**



**PAVEMENT MARKING**



**BARRIER WALL MARKER**

<p>Excellence through Ownership</p> <p>200 West Front Street Wheaton, IL 60187</p>	REVISIONS		ILLINOIS DEPARTMENT OF TRANSPORTATION F.A.P. ROUTE 41 (IL 17)  <b>DISTRICT DETAILS</b>  SCALE: VERT. HORIZ. DATE: OCTOBER 20, 2006 DRAWN BY: NEC CHECKED BY: SPF
	NAME	DATE	

10/19/2006 4:41:46 PM k:\206601\cadd\design\206600\_01s-Det\_02.dgn