

F.A.P. RTE.	SECTION	COUNTY	TOTAL SHEETS	SHEET NO.
41	15-BR	LIVINGSTON	38	32
STA. 184+00.00 TO STA. 184+17.11				
FED. ROAD DIST. NO. 7 ILLINOIS FED. AID PROJECT				

DATE	BY

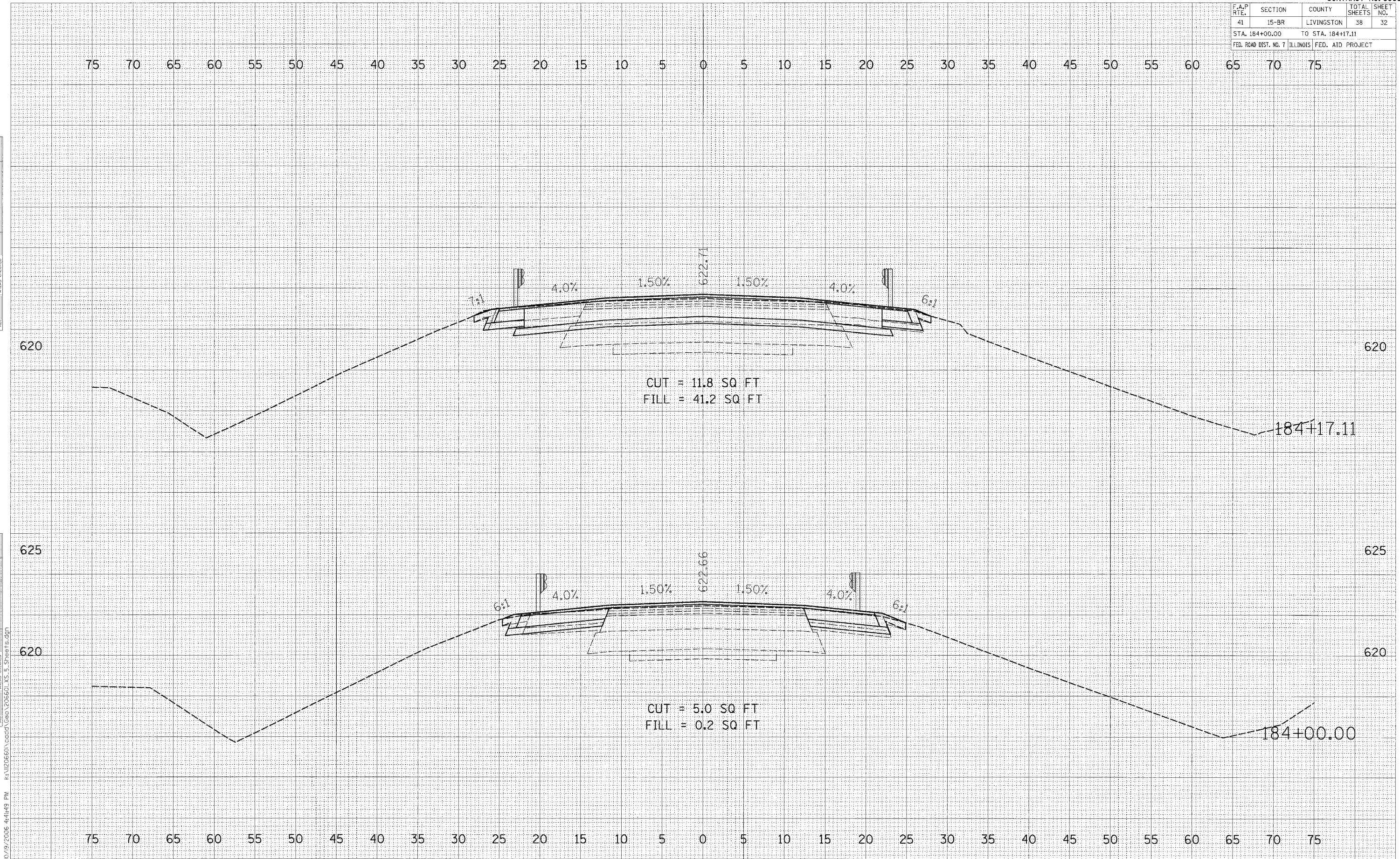
NO.	AREA CHECKED

NO.	AREAS CHECKED

DATE	BY

NO.	AREAS CHECKED

NO.	AREAS CHECKED



10/19/2006 4:41:19 PM K:\1120660\cadd\Geo\206601.XS_5_Sheets.dgn