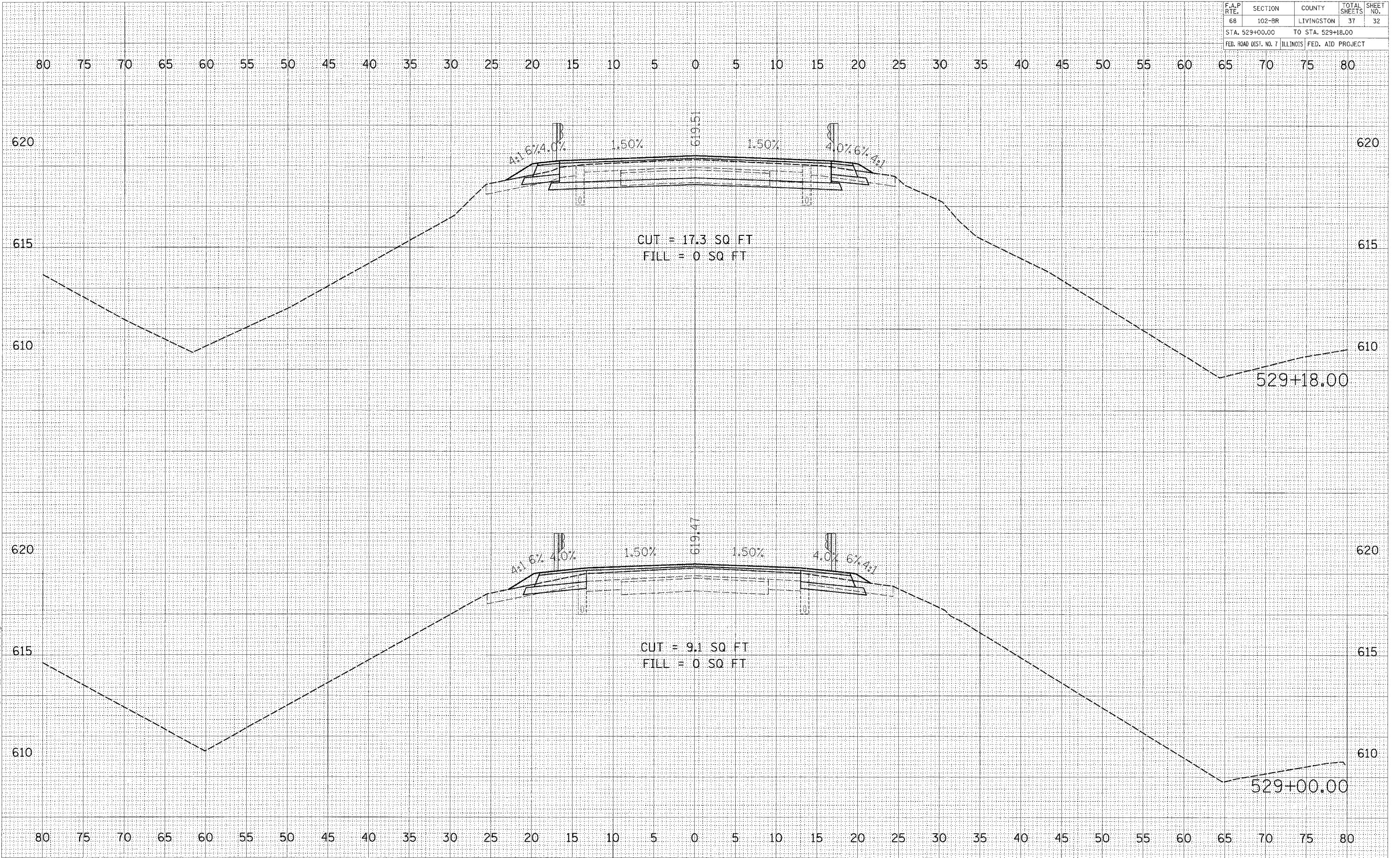


F.A.P. RTE.	SECTION	COUNTY	TOTAL SHEETS	SHEET NO.
68	102-BR	LIVINGSTON	37	32
STA. 529+00.00		TO STA. 529+18.00		
FEB. ROAD DIST. NO. 7		ILLINOIS FED. AID PROJECT		



DATE	BY
SURVEYED	PLOTTED
NOTE BOOK	AREAS CHECKED
NO.	

DATE	BY
SURVEYED	PLOTTED
NOTE B	AREAS CHECKED
NO.	

01/20/2006 12:26:04 AM K:\200602\Cadd\Geo\200602\_XS\_5\_Sheets.dgn