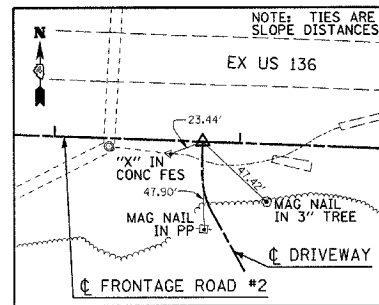
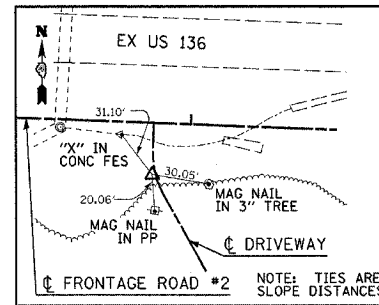


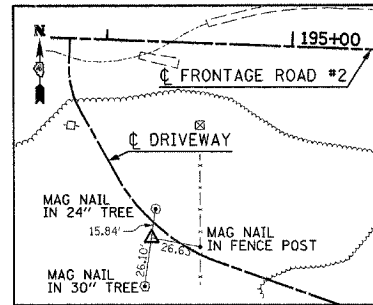
F.A.P. RTE.	SECTION	COUNTY	TOTAL SHEETS	SHEET NO.
315	(34-6,55-1)	HANCOCK/McDONOUGH	433	38
STA		TO STA		
FED. ROAD DIST. NO.		ILLINOIS	FED. AID PROJECT	



STA 10+00.00 (FR 02 DRIVEWAY)  
5/8" IP



PI STA 10+28.00 (FR 02 DRIVEWAY)  
5/8" IP



PI STA 11+19.58 (FR 02 DRIVEWAY)  
5/8" IP

Plot Date: 7/28/2006  
 Plot Time: 10:00 AM  
 Plotter: BLS  
 Pen Tables: Idr1.tbl  
 File Name: I:\03033\ood\1\construction\plan\_plans\009\_alignment.ties.dgn

NOTE: ALL TIES ARE TO FAP ROUTE 315 (IL 336) UNLESS OTHERWISE NOTED

REVISIONS	
NAME	DATE

ILLINOIS DEPARTMENT OF TRANSPORTATION

**ALIGNMENT TIES**  
SHEET 4 OF 4

SCALE: VERT.  
HORIZ.  
DATE 8/29/05

DRAWN BY BDS  
CHECKED BY SRD