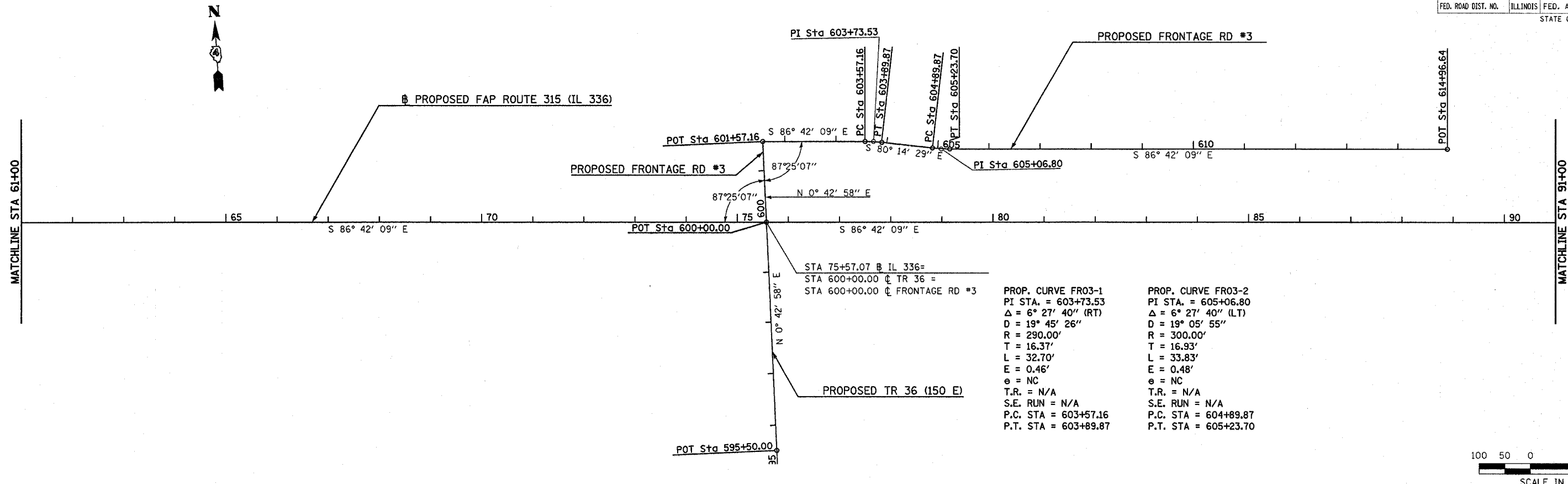
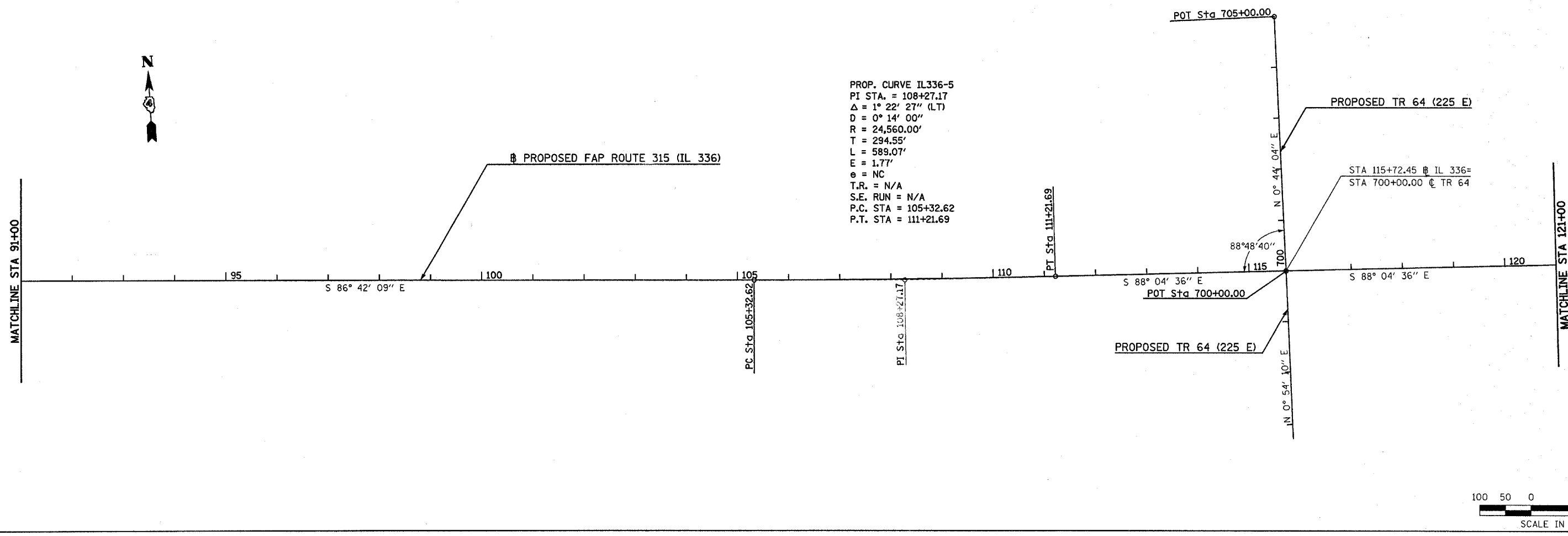


F.A.P. RTE.	SECTION	COUNTY	TOTAL SHEETS	SHEET NO.
315	(34-6,55-1)	HANCOCK/McDONOUGH	433	43
STA. 61+00		TO STA. 121+00		
FED. ROAD DIST. NO.		ILLINOIS FED. AID PROJECT		
STATE CONTRACT NO. 68206				



PROP. CURVE FR03-1  
 PI STA. = 603+73.53  
 $\Delta = 6^\circ 27' 40''$  (RT)  
 D = 19° 45' 26"  
 R = 290.00'  
 T = 16.37'  
 L = 32.70'  
 E = 0.46'  
 e = NC  
 T.R. = N/A  
 S.E. RUN = N/A  
 P.C. STA = 603+57.16  
 P.T. STA = 603+89.87

PROP. CURVE FR03-2  
 PI STA. = 605+06.80  
 $\Delta = 6^\circ 27' 40''$  (LT)  
 D = 19° 05' 55"  
 R = 300.00'  
 T = 16.93'  
 L = 33.83'  
 E = 0.48'  
 e = NC  
 T.R. = N/A  
 S.E. RUN = N/A  
 P.C. STA = 604+89.87  
 P.T. STA = 605+23.70



PROP. CURVE IL336-5  
 PI STA. = 108+27.17  
 $\Delta = 1^\circ 22' 27''$  (LT)  
 D = 0° 14' 00"  
 R = 24,560.00'  
 T = 294.55'  
 L = 589.07'  
 E = 1.77'  
 e = NC  
 T.R. = N/A  
 S.E. RUN = N/A  
 P.C. STA = 105+32.62  
 P.T. STA = 111+21.69

Plot Date: 7/28/2006  
 Plot Time: 3:29:55 PM  
 Plotted By: bschmitt  
 Pen Table: Idot.tbl  
 File Name: I:\AD3033\cod\1\Construction\_Diagram\04.nc04m6.dgn