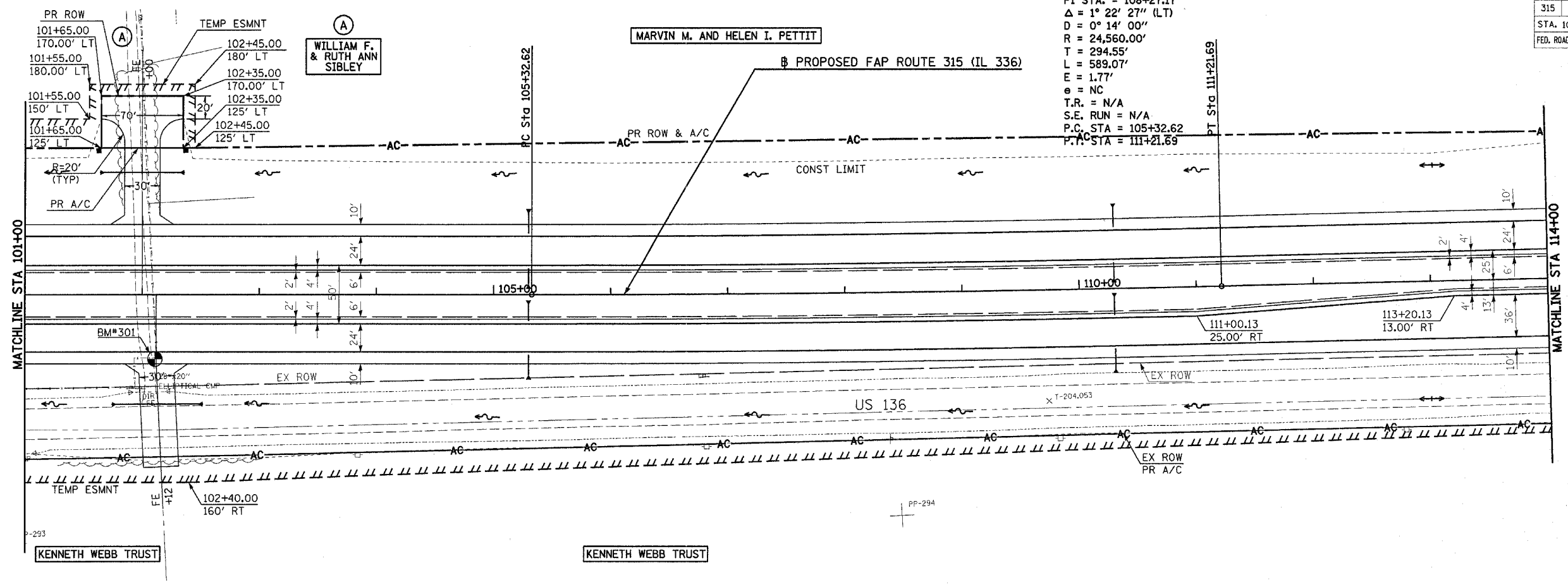


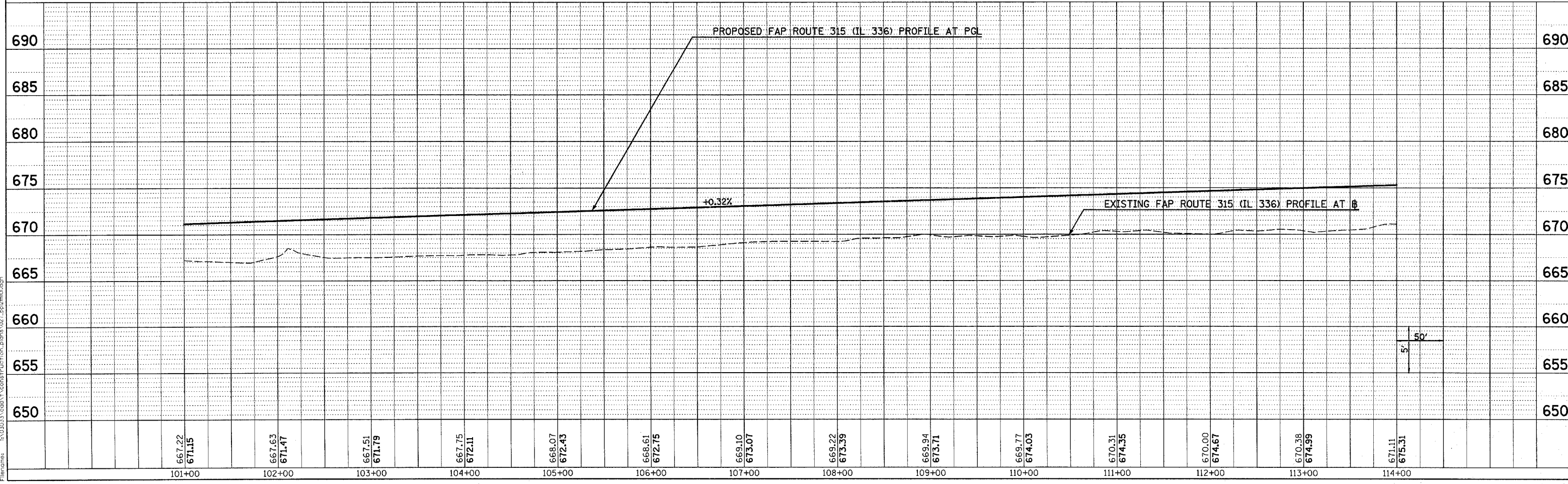
F.A.P. RTE.	SECTION	COUNTY	TOTAL SHEETS	SHEET NO.
315	(34-6,55-1)	HANCOCK/McDONOUGH	433	56
STA. 101+00		TO STA. 114+00		
FED. ROAD DIST. NO.		ILLINOIS	FED. AID PROJECT	
STATE CONTRACT NO. 66206				

PROP. CURVE IL336-5  
 PI STA. = 108+27.17  
 $\Delta = 1^\circ 22' 27''$  (LT)  
 $D = 0^\circ 14' 00''$   
 $R = 24,560.00'$   
 $T = 294.55'$   
 $L = 589.07'$   
 $E = 1.77'$   
 $e = NC$   
 $T.R. = N/A$   
 $S.E. RUN = N/A$   
 $P.C. STA = 105+32.62$   
 $P.T. STA = 111+21.69$



PLAN	DATE
BY	
DATE	
BY	
DATE	
BY	
DATE	

PROFILE	DATE
BY	
DATE	
BY	
DATE	
BY	
DATE	



ROADWAY PLAN & PROFILE - FAP ROUTE 315 (IL 336) STA 101+00 TO STA 114+00

Plot Date: 7/18/2006  
 Plot Time: 3:53:04 PM  
 Plotted By: bschmidt  
 File Name: I:\03033\cadd\construction\plans\027\_pp\02m01.dgn