

MAINTENANCE OF TRAFFIC STAGE 1

SEQUENCE OF CONSTRUCTION

1. CONSTRUCT BOX CULVERT EXTENSION AT STA 1409+52.15 (LT SIDE ONLY) SN 034-2007
2. BUILD PROPOSED SN 034-0512
3. BUILD FUTURE WESTBOUND IL 336 FROM STA 1405+25 TO STA 1445+00
4. BUILD FUTURE EASTBOUND IL 336 FROM STA 1442+00 TO STA 1445+00

TRAFFIC PLACEMENT

1. MAINTAIN WESTBOUND & EASTBOUND TRAFFIC ON EXISTING US 136.

TRAFFIC CONTROL STANDARDS

701006 701011

NOTE:

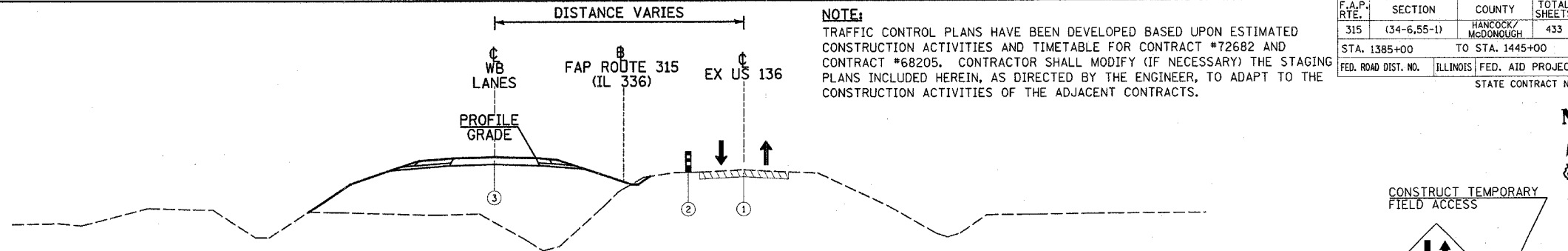
COORDINATION BETWEEN CONTRACTORS IS REQUIRED FOR TRAFFIC CONTROL WHERE CONTRACTS MEET. (SEE SPECIAL PROVISIONS)

NOTE:

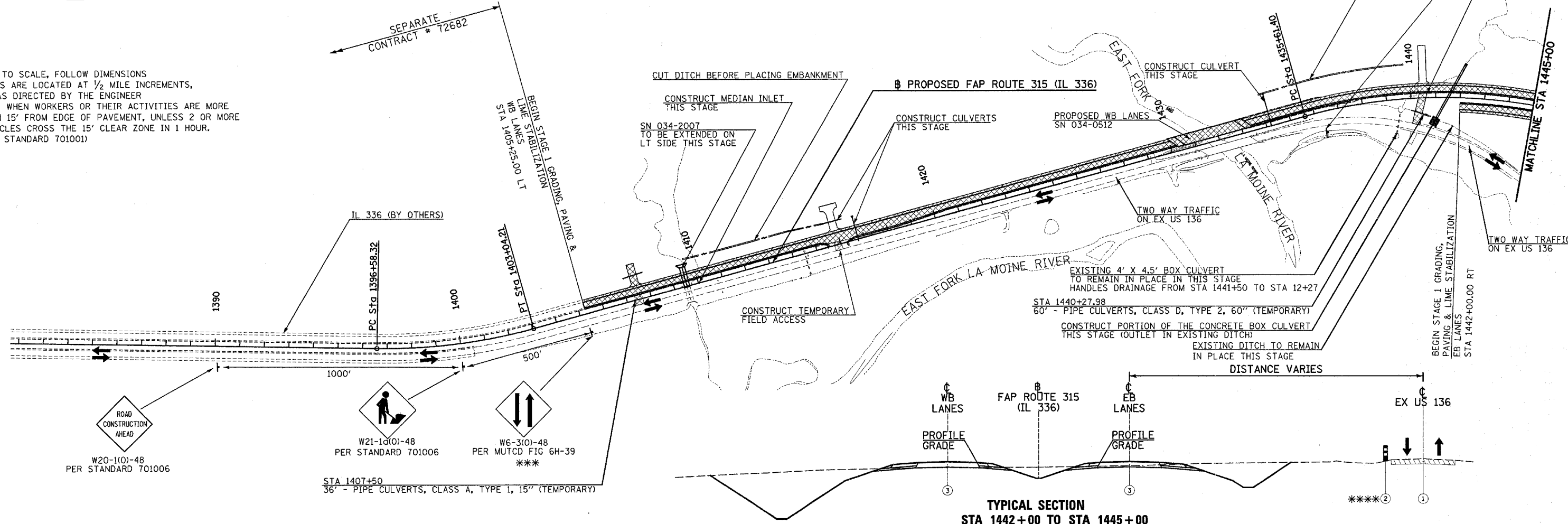
CONSTRUCTION STAGING (SEQUENCING) INSTRUCTIONS INDICATED ON THESE DRAWINGS OR SPECIFICATIONS ARE NOT INTENDED TO DIRECT CONTRACTOR MEANS OR METHODS.

- *** NOT TO SCALE, FOLLOW DIMENSIONS
- *** SIGNS ARE LOCATED AT 1/2 MILE INCREMENTS, OR AS DIRECTED BY THE ENGINEER
- **** OMIT WHEN WORKERS OR THEIR ACTIVITIES ARE MORE THAN 15' FROM EDGE OF PAVEMENT, UNLESS 2 OR MORE VEHICLES CROSS THE 15' CLEAR ZONE IN 1 HOUR. (PER STANDARD 701001)

F.A.P. RTE.	SECTION	COUNTY	TOTAL SHEETS	SHEET NO.
315	(34-6.55-1)	HANCOCK/MCDONOUGH	433	69
STA. 1385+00		TO STA. 1445+00		
FED. ROAD DIST. NO.	ILLINOIS	FED. AID PROJECT	STATE CONTRACT NO. 68206	



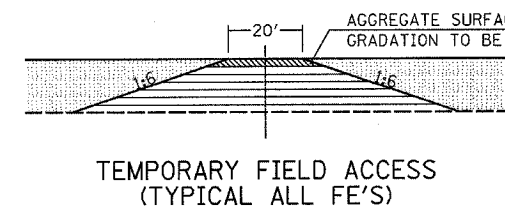
**TYPICAL SECTION
STA 1405+25 TO BRIDGE
BRIDGE TO STA 1442+00**



**TYPICAL SECTION
STA 1442+00 TO STA 1445+00**

NOTE: DURING STAGE 1, ALL FUTURE WESTBOUND PAVEMENT TO BE CONSTRUCTED UP TO THE TOP OF THE BITUMINOUS CONCRETE BINDER COURSE. FINAL SURFACE WILL BE APPLIED IN STAGE 3

- ① WESTBOUND & EASTBOUND TRAFFIC ON EXISTING US 136
- ② DRUMS WITH STEADY BURN LIGHTS (PER STANDARD 701006)
- ③ PROPOSED CONSTRUCTION THIS STAGE



- FIELD ENTRANCE CONSTRUCTION PRIOR TO MAINLINE GRADING
- MAINLINE EARTHWORK AFTER FIELD ENTRANCE IS CONSTRUCTED (MAINTENANCE OF F.E. PER ARTICLE 109.04, CONTRACTOR TO COORDINATE WITH PROPERTY OWNER FOR ACCESS DURING F.E. AND MAINLINE GRADING/PAVING)

LEGEND	
	DIRECTION OF TRAFFIC FLOW
	ROAD CLOSED (TYPE III BARRICADE)
	TEMPORARY CROSSOVER (BY OTHERS)
	GRADING ONLY
	ARROW PANEL SUPPORT
	GRADING & PAVING
	TEMPORARY PAVEMENT (THIS CONTRACT)
	COMPLETED PAVEMENT
	ARROW BOARD
	PORTABLE CHANGEABLE MESSAGE SIGN

REVISIONS	
NAME	DATE

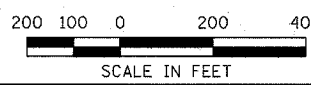
ILLINOIS DEPARTMENT OF TRANSPORTATION

CONSTRUCTION STAGING PLAN

STAGE 1
FAP ROUTE 315 (IL 336)

SCALE: VERT. N/A
HORIZ. 1"=200'
DATE 12/17/03

DRAWN BY HH
CHECKED BY SRD



Plot Date: 7/18/2006
 Plot Time: 3:25:34 PM
 Plotted By: bschmidt
 Pen Table: ldr.tbl
 Filename: I:\030333\road\1\constr\staging\plans\046_csa01m1385.dgn