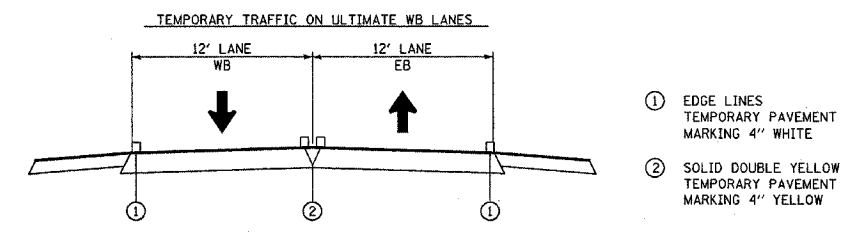
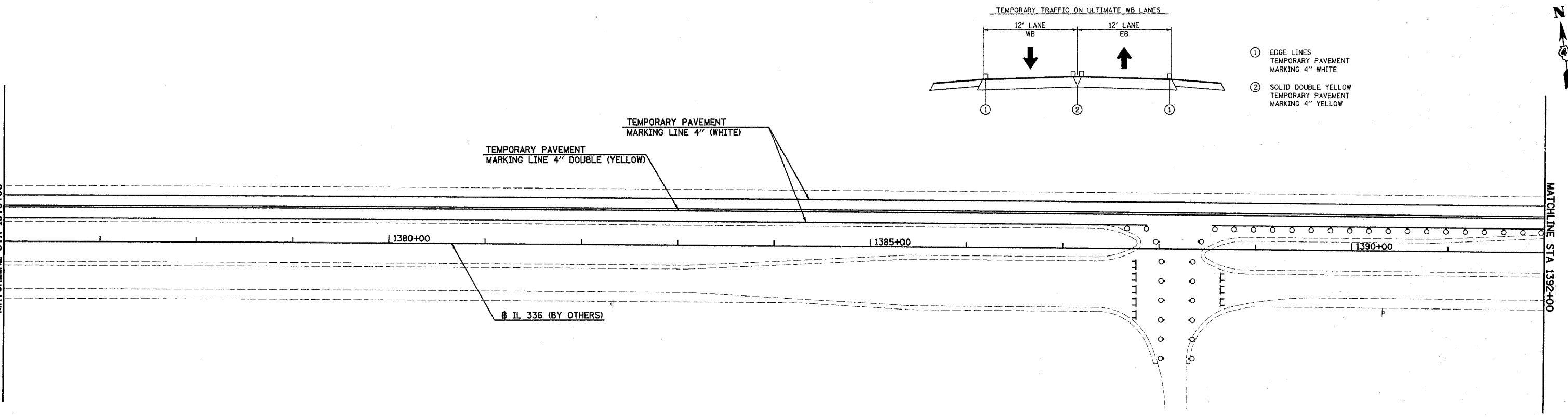
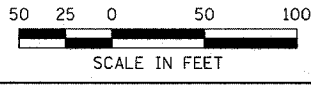
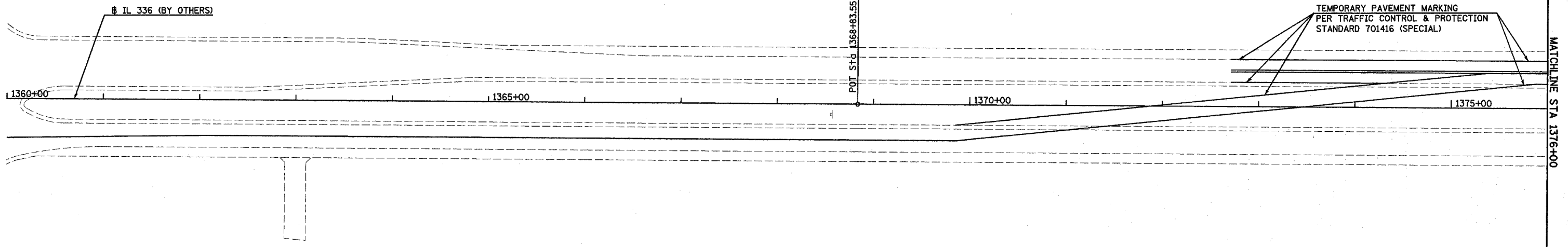
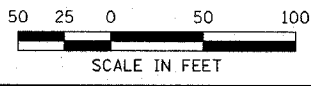


F.A.P. RTE.	SECTION	COUNTY	TOTAL SHEETS	SHEET NO.
315	(34-6,55-1)	HANCOCK/McDONOUGH	433	105
STA. 1360+00		TO STA. 1392+00		
FED. ROAD DIST. NO.	ILLINOIS	FED. AID PROJECT		
STATE CONTRACT NO. 68206				



- ① EDGE LINES  
TEMPORARY PAVEMENT MARKING 4" WHITE
- ② SOLID DOUBLE YELLOW  
TEMPORARY PAVEMENT MARKING 4" YELLOW

- ▮ TYPE III BARRICADE INCLUDED IN TRAFFIC CONTROL & PROTECTION STANDARD 401416 (SPECIAL)
- DRUM WITH MONODIRECTIONAL STEADY LIGHT AT 20' CENTERS INCLUDED IN TRAFFIC CONTROL & PROTECTION STANDARD 701416 (SPECIAL)



CONSTRUCTION STAGING (STAGE 2) TEMPORARY PAVEMENT MARKING - FAP ROUTE 315 (IL 336) STA 1360+00 TO STA 1392+00

Plot Date: 7/19/2006  
 Plot Time: 3:26:53 PM  
 Plotted By: bscmich  
 File Name: h:\030331\eccl\construction\plans\076.ccs\pms021360.dgn